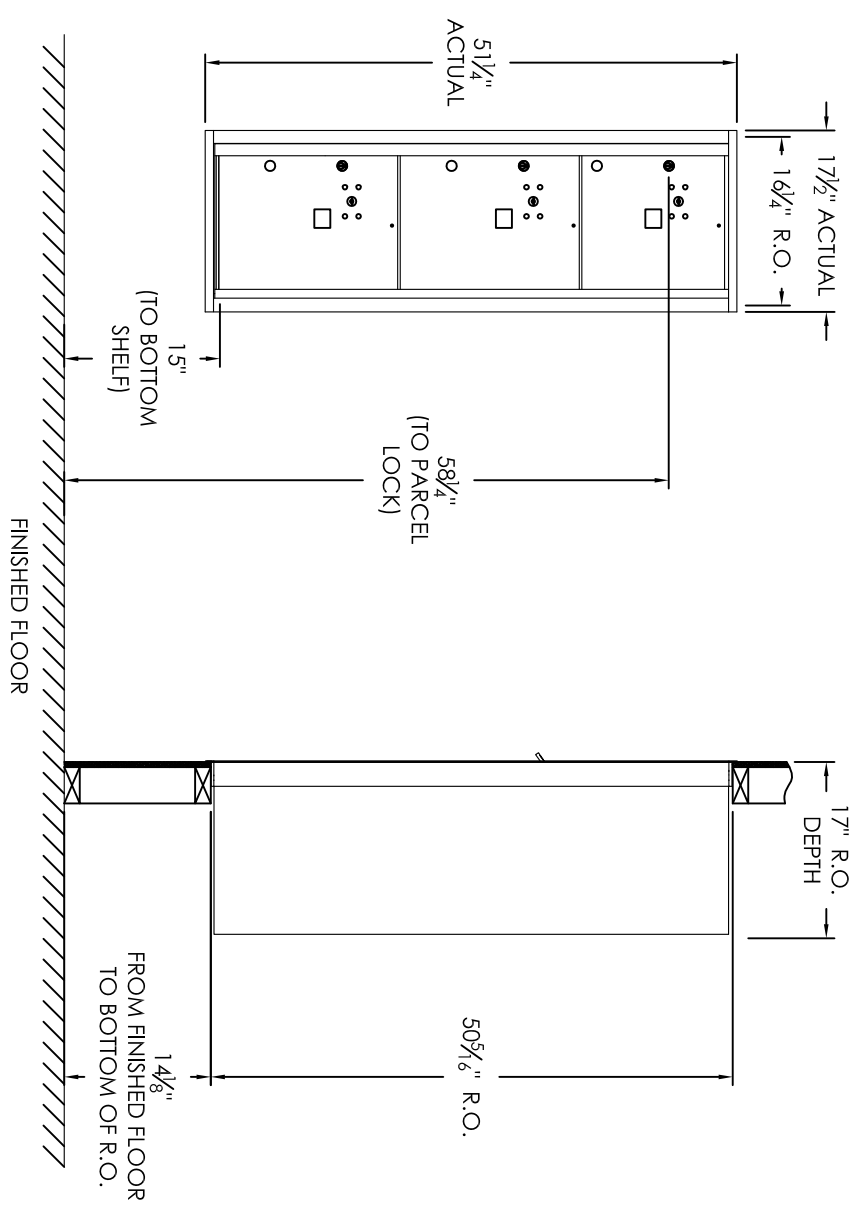


# Versatile™ 4C Mailbox, 4C14S-3P



### COMPARTMENT CHART

DESCRIPTION	COMPARTMENT	COMPARTMENT SIZE	QTY.
PARCEL	PL4	13-1/2" H x 12" W x 15" D	1
PARCEL	PL5	17" H x 12" W x 15" D	2

PRODUCT SERIES: VERSATILE™ 4C FRONT LOAD MAILBOX



MODEL: 4C14S-3P  
SCALE: NONE  
REV: A

DRAWING NUMBER: 4C14S-3PCS  
LAST REV DATE:  
DRAWN BY:

- Notes:
- This module meets the USPS STD-4C requirements for installation defined below when the mailbox is installed per the dimensions provided on this drawing.
    - At least one customer compartment shall be positioned less than 48" above finished floor (AFF).
    - No parcel locker (interior bottom shelf) shall be positioned less than 15" AFF.
    - No patron (tenant) lock shall be positioned more than 67" AFF.
    - No customer compartment (interior bottom shelf) shall be positioned less than 28" AFF.
    - The USPS Arrow lock shall be positioned 36"-48" AFF.
  - This 4C mailbox can also be used for private applications.
  - The rough opening width for multi-unit 4C installations = (the sum of all actual unit widths) - 1 7/8".