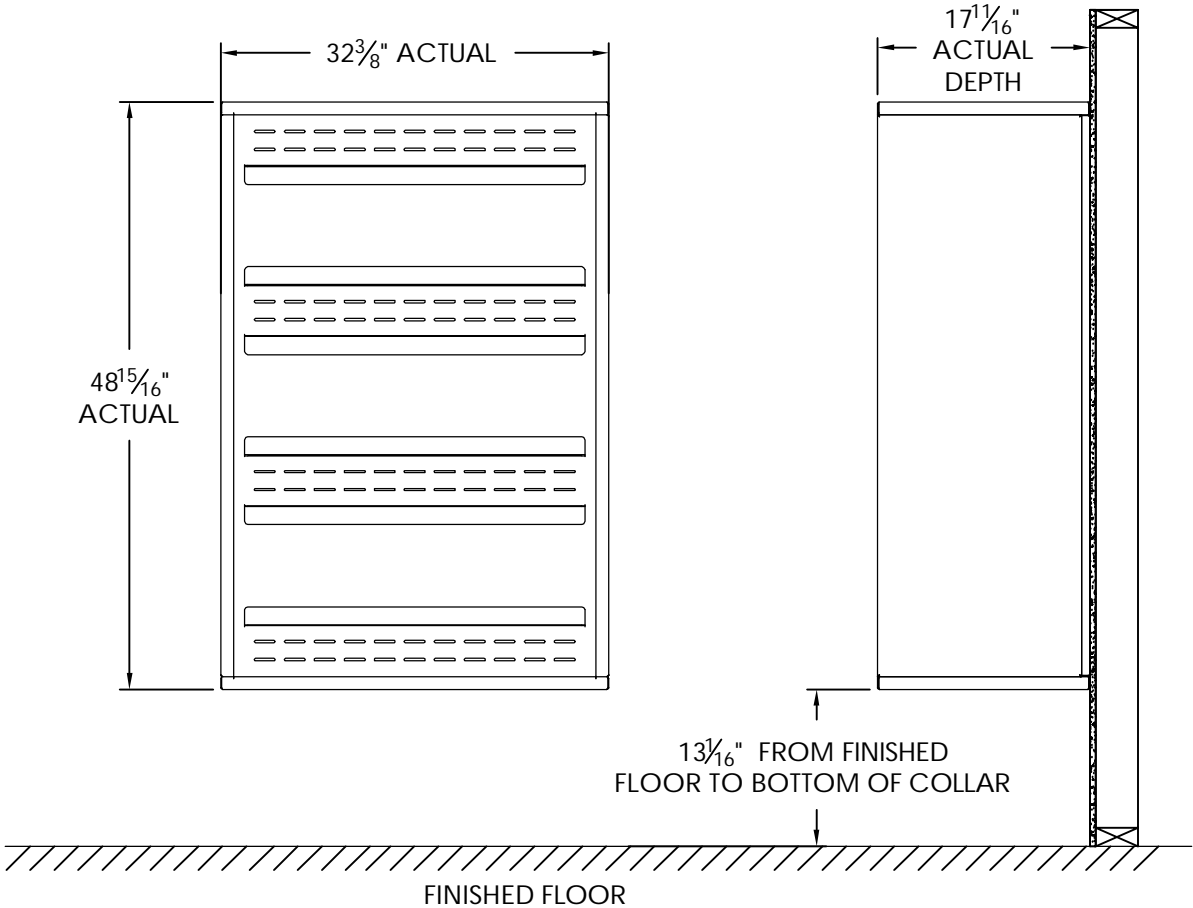


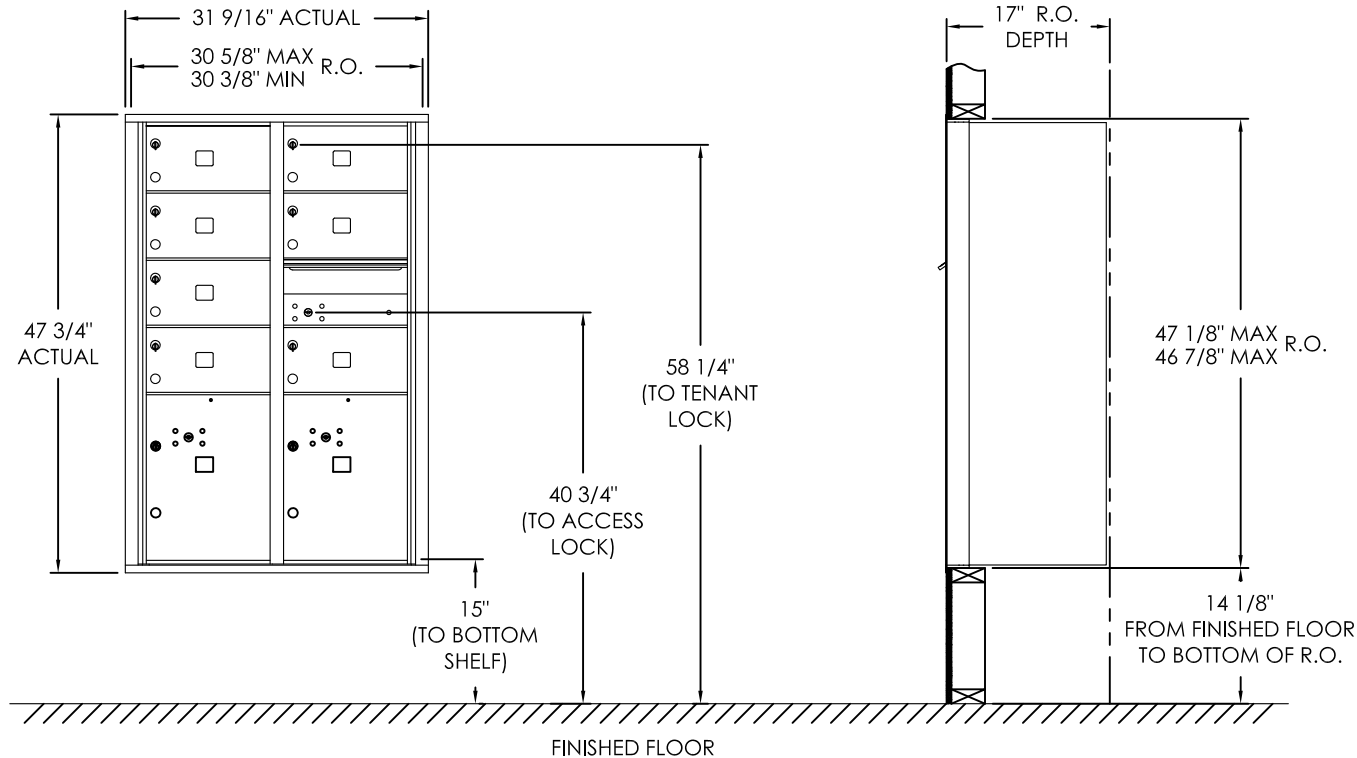
versatile™ 4C Surface Mount Collar, SM13D



- Notes:
- 1. Designed to mount Florence Versatile™ 4C mailbox double column 13-High Suite modules (sold separately).
 - 2. For use with front loading modules only.

PRODUCT SERIES: VERSATILE™ 4C SURFACE MOUNT COLLAR			
	MODEL	SM13D	REV B
	SCALE	NONE	LAST REV DATE 7/02/2014
	DRAWING NUMBER SM13DCS		DRAWN BY TNS

versatile™ 4C Mailbox, 4C13D-07



COMPARTMENT CHART

DESCRIPTION	COMPARTMENT	COMPARTMENT SIZE	QTY.
MAILBOX	MB2	6-1/2" H x 12" W x 15" D	7
OUTGOING MAIL	OM2	6-1/2" H x 12" W x 15" D	1
PARCEL	PL5	17" H x 12" W x 15" D	2

Notes:

- This module meets the USPS STD-4C requirements for installation defined below when the mailbox is installed per the dimensions provided on this drawing.
 - At least one customer compartment shall be positioned less than 48" above finished floor (AFF).
 - No parcel locker (interior bottom shelf) shall be positioned less than 15" AFF.
 - No patron (tenant) lock shall be positioned more than 67" AFF.
 - No customer compartment (interior bottom shelf) shall be positioned less than 28" AFF.
 - The USPS Arrow lock shall be positioned 36"- 48" AFF.
- This 4C mailbox can also be used for private applications.
- The rough opening width for multi-unit 4C installations is provided using the Florence configurator: www.florencemailboxes.com/configurator.

PRODUCT SERIES: VERSATILE™ 4C FRONT LOAD MAILBOX

	MODEL	4C13D-07	REV	C
	SCALE	NONE	LAST REV DATE	07/09/19
	DRAWING NUMBER	4C13D-07CS	DRAWN BY	RAK