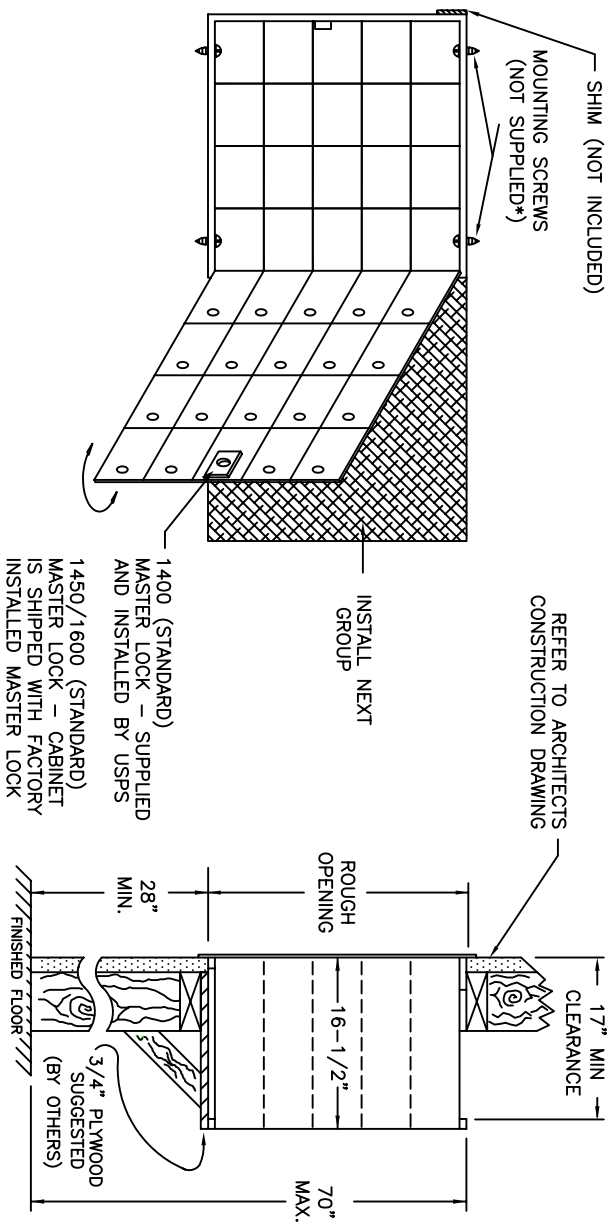
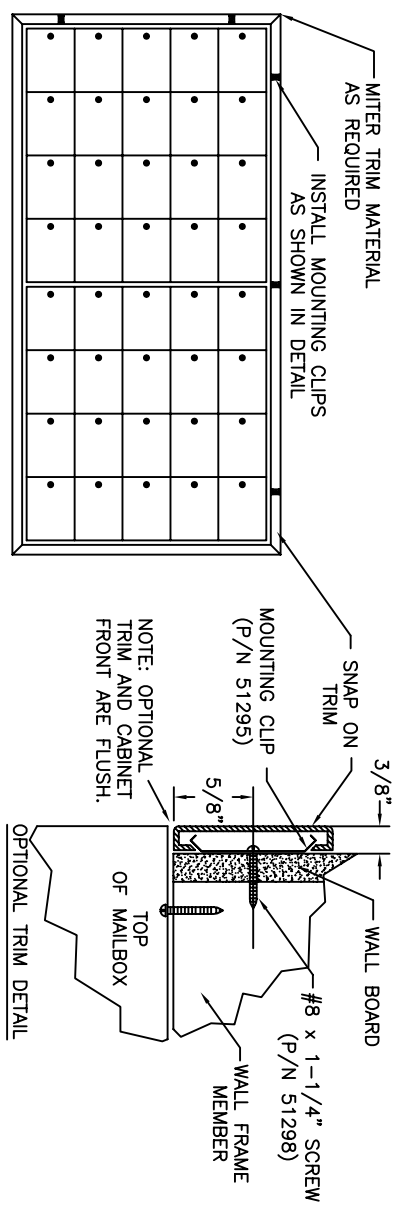


# 1400/1450/1600 CABINET INSTALLATION INSTRUCTIONS (FRONT LOAD)



- NOTE: WHEN SNAP ON TRIM IS USED, CABINET MUST PROJECT 3/8" BEYOND FINISHED WALL TO MAKE A FLUSH SURFACE BETWEEN THE CABINET AND THE TRIM. SEE OPTIONAL TRIM DETAIL.
1. SLIDE FIRST GROUP OF BOXES INTO THE ROUGH OPENING IN WALL.
  2. SHIM AS NECESSARY FOR GATE TO OPEN AND CLOSE FREELY. INSTALL AND TIGHTEN MOUNTING SCREWS\* (2 IN TOP AND 2 IN BOTTOM).
  3. INSTALL NEXT GROUP OF BOXES THE SAME AS ABOVE.
- NEXT STEPS ONLY FOR CABINETS WITH OPTIONAL SNAP ON TRIM
4. SCREW MOUNTING CLIP TO WALL USING #8 X 1-1/4" SCREWS, SEE OPTIONAL TRIM DETAIL.
  5. HOOK ONE EDGE OF TRIM OVER LEG OF CLIP AND SNAP OVER SECOND LEG OF CLIP.

## OPTIONAL SNAP ON TRIM MOUNTING DETAILS




- \* FOR CONVENTIONAL LUMBER WE RECOMMEND A #8 X 2" FLAT HEAD WOOD SCREW.

PRODUCT SERIES: **RECOMMENDED MOUNTING DETAILS**  
 FOR 1400/1450/1600 SERIES F/L MAILBOXES

USPS STD-4C COMPLIANT MAILBOX SYSTEMS ARE MANDATORY FOR ALL **NEW CONSTRUCTION AND MAJOR RENOVATIONS**. MAILBOXES THAT ARE 4B+ COMPLIANT WILL ONLY BE CONSIDERED USPS APPROVED IF THEY ARE **REPLACING** EXISTING MAILBOXES. CHECK WITH LOCAL POSTAL OFFICIAL PRIOR TO INSTALLING MAILBOX.

1400 SERIES ARE 4B+ COMPLIANT  
 1450/1600 SERIES ARE NOT 4B+ COMPLIANT



**BudgetMailboxes**  
 Best Brands. Best Prices. .com

WebLife Stores LLC  
 PO Box 20338, Panama City Beach, FL 32417  
 www.budgetmailboxes.com • (866) 707-0008

MODEL	AF HORIZ.	REV	A
SCALE	1:16	LAST REV DATE	7/2/2009
DRAWING NUMBER	CS2057	DRAWN BY	NBC