





Memory Lane

Designer: Christophe Pillet
Year: 2018

Christophe Pillet designs a chair that is timeless, universal and radically simplified in its design. Memory Lane's elegance lies in its outright rejection of any hint of complexity. The slender metal structure and sophisticated top-stitched upholstery, with elastic webbing visible on the back of the seat, make it a true declaration of simplicity. A chair designed for the contract market, where beauty and comfort stylishly coexist.

Developed by Tacchini in Italy

Dimensions (cm)

Cod. OMEM59



W 59 D 65,5 cm
H 84 cm
H seat 52 cm

CAD Files:
3D (.dwg, .3ds)
2D (.dwg)

Download CAD
files at [tacchini.it/
en/downloads](http://tacchini.it/en/downloads)

Materials description

Padding: differentiated-density polyurethane foam.

Base: tubular metal frame Ø 20 mm powder coated painted, with beige elastic belts which sustain seat and back.

Upholstery: removable cover.

Only for outdoor version: dryfeel padding.

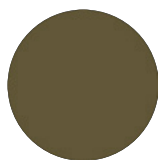
Base



T03 RAL 7016
Grey



T15 RAL 6034
Turquoise

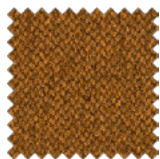


T107
Green/Bronze

Suggested upholsteries



Bakul



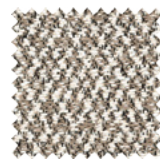
Bamboo



Bopha



Bryony



Cacao



Caladium



Calantha



Cambria



Descampsia



Dianella



Dionea



Dulcamara



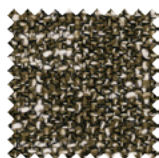
Euclidium



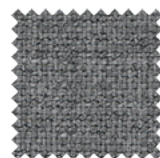
Eugenia



Evonimo



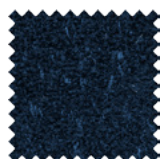
Eremurus



Escallonia



Escobaría



Laelia



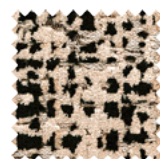
Lamium



Lars



Ligustrum



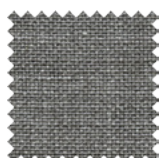
Salix



Sedum



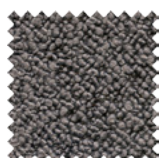
Schinus



Thesium



Tibouchina



Ricinus



Mirabilis



Guarana

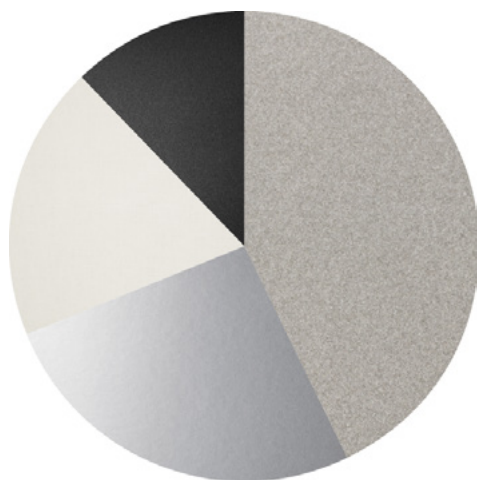


Leather



Aniline Leather

Materials informations



Padding	43%
Metal	26%
Upholstery	19%
Elastic belts	12%

Polyurethane

Flexible expanded polyurethane is a solid elastic polymeric material with open cell structure. It is a non-toxic material and above all free from ozone-damaging components. Production and processing of the polyurethane we use meet the objectives of the new policy of ensuring the protection of human health and of the environment. We focus in particular on the choice and use of the types of density of polyurethane suitable for preserving over the years the features of load capacity, elasticity and resilience. For products used in public spaces flame-retardant expanded polyurethane is chosen, tested and certified according to international regulations.

Metal

The need to combine complex yet lightweight shapes with resistant materials necessarily involves the use of metals such as steel and aluminium. Products in polyurethane foam are made with an inner steel frame for adding strength to the structure. The bases are in tubular metal which can be chromed with a gloss or satin finish or painted with epoxy powders.

Elastic belts

The elastic belt used on the seats of our upholstered products is a component to be chosen with care in order to ensure adequate elasticity and springing for the dimension and the structure of the product. We use plaited elastic webbing to add greater comfort and resistance to weight stresses.

Recyclability

All Babela elements are 100% recyclable when fully separated. Tacchini undertakes on-going research and development, with efforts made to introduce products which are a perfect combination of function and safety without jeopardizing the final design of the same articles. During production attempts are made to minimize noise and emission levels and to reduce rejects as far as possible. All the single materials which make up the production process, once disassembled, can be reused several times, maintaining a high quality standard.

Packaging

Babela element is dispatched already assembled. It is protected by tissue paper and cellophane to protect the covering from dust and direct contact with the cardboard. The product is packed in rigid cardboard boxes suitable for world export. Manufacture of the packaging observes the criteria for recovery both as recycling and energy recovery and composting.

Once a product reaches the end of its life cycle it has to be eliminated.

To discover more about Tacchini environmental policy please visit: www.tacchini.it



Christophe Pillet

This lodestar in French design gained a Master's degree in Design in Milan in 1985, before working with Philip Starck in Paris from 1988 to 1993, after which he set up his own independent, eclectic business, featuring his hallmark style – simple, strong, and to the point – be it in architecture or interior design, furniture, fashion or industrial design. Winner of the French “Créateur de l'année” award in 1994, Pillet works with some of the biggest names in contemporary furniture design.