



**Isola**

Designer: Zanini De Zanine
Year: 2019

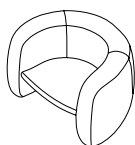
Zanini de Zanine, the famous Brazilian designer, son of architect and designer José Zanine Caldas, creates an absolutely original model, conceived exclusively for Tacchini: Lagoa. Its soft, rounded forms surround a suspended seat that gives a marked contrast in terms of thickness. The ends of the seat slot into the sides of the structure, disappearing into a seamless natural embrace. A piece that shows brilliant, original creativity, drawing inspiration from the softness of the Carioca tradition, with an all-new visionary spirit.

Awards: Good Design Award 2019

Developed by Tacchini in Italy

Dimensions (cm)

Cod. OLAG90



W 90 D 74 H 74 cm
H seat 33 cm

CAD Files:
3D (.dwg, .3ds)
2D (.dwg)

Download CAD
files at [tacchini.it/
en/downloads](http://tacchini.it/en/downloads)

Materials description

Internal structure: 18 mm poplar plywood.

Seat with elastic belts.

Padding: differentiated-density polyurethane foam.

Upholstery: not removable.

Suggested upholsteries



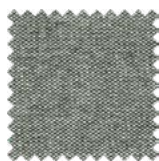
Bakul



Bamboo



Bopha



Bryony



Cacao



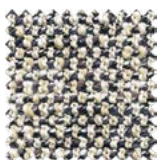
Caladium



Descampsia



Echinacea



Equisetum



Eugenia



Evonimo



Eremurus



Escallonia



Escobaría



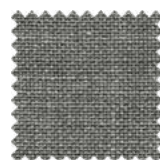
Laelia



Lars



Schinus



Thesium



Ricinus



Guarana



Aniline Leather

Materials informations



Poplar plywood 45%
 Padding 34%
 Upholstery 19%
 Elastic belts 2%

Polyurethane

Flexible expanded polyurethane is a solid elastic polymeric material with open cell structure. It is a non-toxic material and above all free from ozone-damaging components. Production and processing of the polyurethane we use meet the objectives of the new policy of ensuring the protection of human health and of the environment. We focus in particular on the choice and use of the types of density of polyurethane suitable for preserving over the years the features of load capacity, elasticity and resilience. For products used in public spaces flame-retardant expanded polyurethane is chosen, tested and certified according to international regulations.

Wood

Wood is a renewable raw material. All products derived from wood, such as for example plywood, have the advantage of being able to be machined more easily than wood and do not deform. The timber we use – solid or plywood – comes mainly from European and Russian forests and is seasoned to specific values of humidity with tests. Most of the structures of the products in the collection have a frame in solid pine or ash, or in beech or poplar plywood.

Elastic belts

The elastic belt used on the seats of our upholstered products is a component to be chosen with care in order to ensure adequate elasticity and springing for the dimension and the structure of the product. We use plaited elastic webbing to add greater comfort and resistance to weight stresses.

Recyclability

All Isola elements are 100% recyclable when fully separated. Tacchini undertakes on-going research and development, with efforts made to introduce products which are a perfect combination of function and safety without jeopardizing the final design of the same articles. During production attempts are made to minimize noise and emission levels and to reduce rejects as far as possible. All the single materials which make up the production process, once disassembled, can be reused several times, maintaining a high quality standard.

Packaging

Isola element is dispatched already assembled. It is protected by tissue paper and cellophane to protect the covering from dust and direct contact with the cardboard. The product is packed in rigid cardboard boxes suitable for world export. Manufacture of the packaging observes the criteria for recovery both as recycling and energy recovery and composting.

Once a product reaches the end of its life cycle it has to be eliminated.

To discover more about Tacchini environmental policy please visit: www.tacchini.it

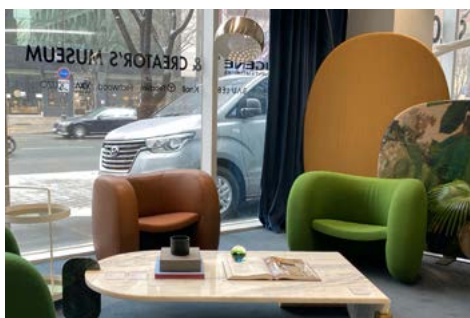


Zanini De Zanine

Born in Rio de Janeiro in 1978, Zanini de Zanine grew up watching his father, José Zanine Caldas work. He trained with Sergio Rodrigues, when he produced his first mobile. In 2002 he graduated in Industrial Design at PUC-Rio. From 2003, he began producing solid wood furniture, with pieces of demolition — columns, beams and posts of old houses — baptized as “Contemporary Carpentry.” From 2005, he began to create a new line of furniture pieces produced industrially using controlled origin wood and different materials such as plastic, acrylic, metals and other parts of manufactured products. To represent this new furniture line, Zanini creates in 2011 Studio Zanini.

Tacchini Projects:

Bridal Boutique
(Busan, South Korea)



Richwood Showroom
(Seoul, South Korea)