



Kelly T

Designer: Claesson Koivisto Rune
Year: 2014

Kelly tables are a complete collection of proposals characterised by the same enjoyable formal language made of rounded and comfortable geometries. They are available in different types and dimensions in order to satisfy every need at home, in the office or for the contract market: square, rectangular, with central base or with four legs. The structure can be painted with different colours or chromed for more sophisticated environments. In different colours the top as well, which can have a particular finish that makes it velvety and soft to the touch.

Developed by Tacchini in Italy

Dimensions (cm)

Cod. 1KELT99



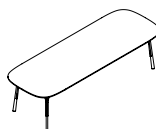
W 99 D 99 cm
H 72 cm

Cod. KELT220



W 220 D 99 cm
H 72 cm

Cod. KELT280



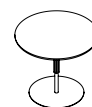
W 280 D 99 cm
H 72 cm

Cod. KELT120



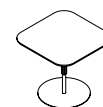
W 120 D 120 cm
H 72 cm

Cod. 1KELTC85



Ø 85 H 72 cm

Cod. 1KELTC80X80



W 80 D 80 H 72 cm

CAD Files:
3D (.dwg, .3ds)
2D (.dwg)

Download CAD
files at tacchini.it/en/downloads

Materials description

Base: tubular metal frame Ø 18 mm (high tables), Ø 14 mm (Tables) powder-coated painted.

Table top: MDF 23 mm aluminium plated powder-coated. Finishes available: T-A (Embossed) or T-B (Velvet).

Base



T02 RAL 9016
White



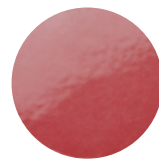
T03 RAL 7016
Grey



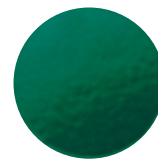
T05 RAL 7023
Grey



T07 RAL 9011
Black



T17 RAL 3014
Pink



T18 RAL 6029
Green



T19 RAL 5021
Blue



T61 RAL 6014
Green

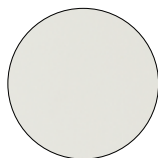


T25
Matt Champagne Gold
Only: 1KELT99/1KELT220
/1KELT2809/1KELT120

Top



T50
Wengè
Only: 1KELT99/1KELT220
/1KELT2809/1KELT120



T51
White



T52
Black



T53
Grey



T54
Grey



T55
Pink



T56
Turquoise

Materials informations



MDF 60%
Metal components 40%

Wood

Wood is a renewable raw material. All products derived from wood, such as for example plywood, have the advantage of being able to be machined more easily than wood and do not deform. The timber we use – solid or plywood – comes mainly from European and Russian forests and is seasoned to specific values of humidity with tests. Most of the structures of the products in the collection have a frame in solid pine or ash, or in beech or poplar plywood.

Metal

The need to combine complex yet lightweight shapes with resistant materials necessarily involves the use of metals such as steel and aluminium. Products in polyurethane foam are made with an inner steel frame for adding strength to the structure. The bases are in tubular metal which can be chromed with a gloss or satin finish or painted with epoxy powders.

Recyclability

All Kelly T elements are 100% recyclable when fully separated. Tacchini undertakes on-going research and development, with efforts made to introduce products which are a perfect combination of function and safety without jeopardizing the final design of the same articles. During production attempts are made to minimize noise and emission levels and to reduce rejects as far as possible. All the single materials which make up the production process, once disassembled, can be reused several times, maintaining a high quality standard.

Packaging

Kelly T element is dispatched already assembled. It is protected by tissue paper and cellophane to protect the covering from dust and direct contact with the cardboard. The product is packed in rigid cardboard boxes suitable for world export. Manufacture of the packaging observes the criteria for recovery both as recycling and energy recovery and composting.

Once a product reaches the end of its life cycle it has to be eliminated.

To discover more about Tacchini environmental policy please visit: www.tacchini.it



Claesson Koivisto Rune

The Claesson Koivisto Rune studio was established in 1995 as a multidisciplinary architecture and design workshop, in line with the classic Scandinavian tradition, but with the aim of exploring new concepts, and pursuing the values of simplicity and innovation. The three Swedes have created architectural designs throughout the world and in every sector, from homes to restaurants, retail to executive buildings, as well as furniture ranges for numerous major international firms.

Selected projects:

Alysi Showroom
(Milan, Italy)