





## Joaquim

Designer: Giorgio Bonaguro  
Year: 2019

The softness of Brazilian furniture design between the 40s and 60s in the modernist architecture of Niemeyer, Costa, Vilanova Artigas and Bo Bardi provides the inspiration for the new collection of Joaquim tables by Bonaguro for Tacchini. In aesthetic terms, the linear, geometric shapes are a homage to the simple, elegant lines of Joaquim Tenreiro, considered one of the fathers of modern tropical design. In technical terms, the Joaquim collection was designed to salvage off-cuts, fully embracing the principles of upcycling and environmental sustainability, which are major linchpins of Brazilian creativity. The tables feature a metal frame with tops and bases in Patagonia or Elegant Brown.

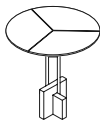
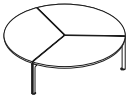
Awards: 2020 Wallpaper\* Design  
Awards: Best Flashback

Developed by Tacchini in Italy

## Dimensions (cm)

Cod. 1JOA100

Cod. 1JOA50



Ø 100 H 30 cm

Ø 50 H 48 cm

CAD Files:  
3D (.dwg, .3ds)  
2D (.dwg)

Download CAD  
files at [tacchini.it/en/downloads](https://tacchini.it/en/downloads)

---

Base



T27  
Matt Black Chrome



T117  
Bronze

---

Top



T118  
Shiny Patagonia Marble



T119  
Elegant Brown Marble

Materials informations



Marble	53%
Iron	46%
Aluminum	1%

Marble

Marble is a natural material obtained through a metamorphic process from sedimentary rock such as limestone or dolomite, causing crystallisation of the calcium carbonate. The specific features of the material can be seen in the marble we use which is worked by artisans with machinery and polished with natural waxes which go to respect the actual essence of the nature of the marble.

Metal

The need to combine complex yet lightweight shapes with resistant materials necessarily involves the use of metals such as steel and aluminium. products in polyurethane foam are made with an inner steel frame for adding strength to the structure. The bases are in tubular metal which can be chromed with a gloss or satin finish or painted with epoxy powders.

Recyclability

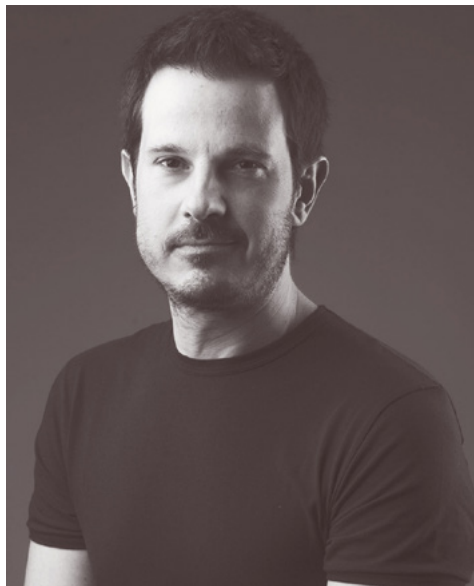
All Split elements are 100% recyclable when fully separated. Tacchini undertakes on-going research and development, with efforts made to introduce products which are a perfect combination of function and safety without jeopardizing the final design of the same articles. During production attempts are made to minimize noise and emission levels and to reduce rejects as far as possible. All the single materials which make up the production process, once disassembled, can be reused several times, maintaining a high quality standard.

Packaging

Split element is dispatched already assembled. It is protected by tissue paper and cellophane to protect the covering from dust and direct contact with the cardboard. The product is packed in rigid cardboard boxes suitable for world export. Manufacture of the packaging observes the criteria for recovery both as recycling and energy recovery and composting.

Once a product reaches the end of its life cycle it has to be eliminated.

To discover more about Tacchini environmental policy please visit: [www.tacchini.it](http://www.tacchini.it)



---

#### Giorgio Bonaguro

Giorgio Bonaguro studied mechanical engineering in Modena and then graduated at the Scuola Politecnica di Design in Milan, in the double Master of Industrial and Interior Design. He has worked in several design studios in Milan; actually he collaborates with different companies and develops limited editions presented at some international fairs such as Design Miami/Basel, London Design Festival, Opera. He works between Italy and Brazil in the field of product design, interior design, exhibition and lighting, trying to combine a linear style with research and contamination between materials.

---

#### Selected projects:



Private House  
(Casablanca, Morocco)