





## Cage

Designer: Gordon Guillaumier  
Year: 2010

Minimalism and elegance are the key features of Cage coffee tables, with their metal base that is both support and frame for the precious marble top. Cage tables can be round or square, high or low, and they accompany and complement all the sofas and armchairs in the Tacchini collections.

Developed by Tacchini in Italy

## Dimensions (cm)

Cod. 1CAGT50

Cod. 1CAGT100

Cod. 1CAGQ50

Cod. 1CAGQ100

CAD Files:  
3D (.dwg, .3ds)  
2D (.dwg)



Ø 50 H 47 cm

Ø 100 H 32 cm

W 50 D 50 cm  
H 47 cmW 100 D 100 cm  
H 32 cm

Download CAD  
files at [tacchini.it/en/downloads](http://tacchini.it/en/downloads)

## Materials description

Top: 20 mm thick. Anti-stain marble treatment available on request.

---

Chromed base



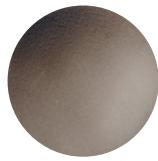
T25  
Matt Champagne Gold



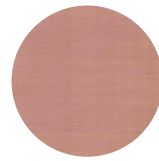
T26  
Polished Champagne Gold



T27  
Matt Black Chromed



T28  
Polished Black Chromed



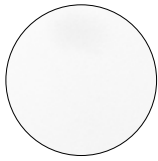
T64  
Brush Matt Copper



T136  
Matt Gold

---

Painted base



T02  
White RAL 9016



T07  
Black RAL 9011

---

Top



T29  
Shiny White Carrara



T31  
Shiny White Calacatta



T32  
Shiny Black Marquinia

---



T41  
Smoked Mirror



T42  
Bronze Mirror

---

## Materials informations



## Marble

Marble is a natural material obtained through a metamorphic process from sedimentary rock such as limestone or dolomite, causing crystallisation of the calcium carbonate. The specific features of the material can be seen in the marble we use which is worked by artisans with machinery and polished with natural waxes which go to respect the actual essence of the nature of the marble.

## Metal

The need to combine complex yet lightweight shapes with resistant materials necessarily involves the use of metals such as steel and aluminium. products in polyurethane foam are made with an inner steel frame for adding strength to the structure. The bases are in tubular metal which can be chromed with a gloss or satin finish or painted with epoxy powders.

Top finish 80%  
Metal base 20%

## Recyclability

All Cage elements are 100% recyclable when fully separated. Tacchini undertakes on-going research and development, with efforts made to introduce products which are a perfect combination of function and safety without jeopardizing the final design of the same articles. During production attempts are made to minimize noise and emission levels and to reduce rejects as far as possible. All the single materials which make up the production process, once disassembled, can be reused several times, maintaining a high quality standard.

## Packaging

Cage element is dispatched already assembled. It is protected by tissue paper and cellophane to protect the covering from dust and direct contact with the cardboard. The product is packed in rigid cardboard boxes suitable for world export. Manufacture of the packaging observes the criteria for recovery both as recycling and energy recovery and composting.

Once a product reaches the end of its life cycle it has to be eliminated.

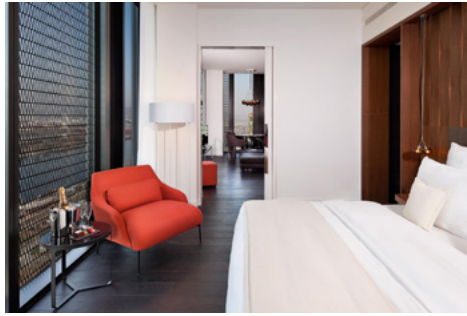
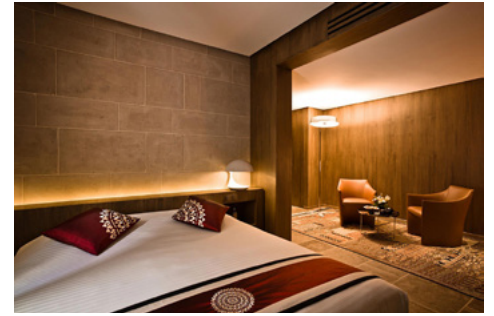
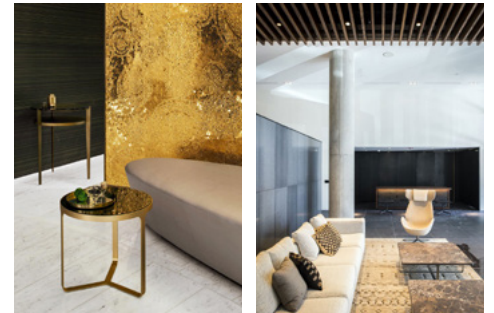
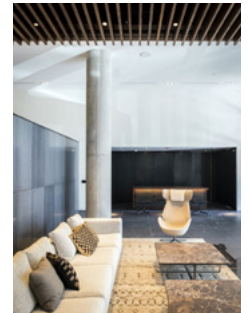
To discover more about Tacchini environmental policy please visit: [www.tacchini.it](http://www.tacchini.it)



Gordon Guillaumier

Gordon Guillaumier was born in 1966, and was educated firstly in Malta, then in Switzerland, England and Italy. He graduated from IED in Milan (1988-91), before specializing in design at the Domus Academy, Milan (1992). In 1993 he began working with Baleri Associati, as well as collaborating with architect Rodolfo Dordoni. In 2002 he set up his own design studio in Milan, principally working on product design, but also for design consultancy projects. In 2006 he lectured in industrial design at Milan's Politecnico university.

## Selected projects:

The Perry  
(Toronto, Canada)Hotel Meliá  
(Wien, Austria)Riad Hotel  
(Fez, Morocco)Property Finder Group  
(Dubai, United Arab Emirates)COB  
(Meda, Italy)Ten Trinity Square  
Spa (London,  
Great Britain)The Parker  
(Chicago,  
United States)