

HERITAGE

WOVEN SIDE TABLE

REF.: 78756



Materials

Lacquered aluminium structure covered with synthetic SHINTOTEX fibre.

Table top in teak, porcelain or compact HPL.

Dimensions

Length x width x height:

51 x 51 x 34,5 cm./ 20.1 x 20.1 x 13.6 in.

Weight teak table top: 10,4 Kg./ 22.93 lb.

Weight porcelain table top: 11,47 Kg./ 25.28 lb.

Weight compact HPL table top: 9,16 Kg./ 20.19 lb.

Volume: 0,13 m³.

Finish

Weaving: Round 6 mm ϕ .

Colour:

Moss Brown



Ash Grey



Teak top:

Natural teak



Porcelain top:

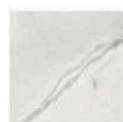
Natural white 81



Lava grey 82



Veined off white 85



Basalt grey 86



Ochre greu 87

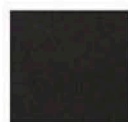


HPL top:

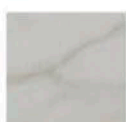
Beige



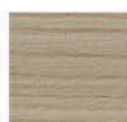
Black



Marbled white



Wood



Solid taupe



Solid white

