

HERITAGE

SQUARE WOVEN COFFEE TABLE

REF.: 78753



Materials

Lacquered aluminium structure covered with synthetic SHINTOTEX fibre.

Table top in teak, porcelain or compact HPL.

Dimensions

Length x width x height:

100 x 100 x 34,5 cm./ 39.4 x 39.4 x 13.6 in.

Weight teak table top: 29,6 Kg./ 65.26 lb.

Weight porcelain table top: 38,64 Kg./ 85.18 lb.

Weight compact HPL table top: 28,07 Kg./ 61.88 lb.

Volume: 0,46 m³.

Finish

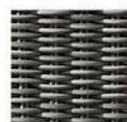
Weaving: Round 6 mm ϕ .

Colour:

Moss Brown



Ash Grey



Teak top:

Natural teak



Porcelain top:

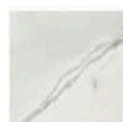
Natural white 81



Lava grey 82



Veined off white 85



Basalt grey 86



Ochre greu 87

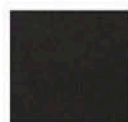


HPL top:

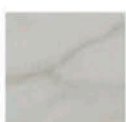
Beige



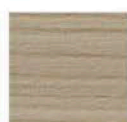
Black



Marbled white



Wood



Solid taupe



Solid white

