

SUMMER

RECTANGULAR DINING TABLE
REF.: 77908



Materials

Powder-coated aluminium frame. Porcelanic, compact top.

Dimensions

Length x width x height:
180 x 100 x 74 cm. / 70.9 x 39.4 x 29.1 in.
Porcelanic weight: 111,7 kg. / 246,4 lb.
Compact weight: 92 kg / 202,8 lb
Volume: 1,78 m.³

Finish

Frame color

Cream 34



Gunmetal
gray 56



Porcelanic:

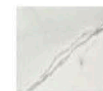
Natural
white 81



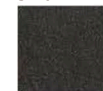
Lava
grey 82



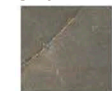
Veined Off
White 85



Basalt
grey 86



Ochre
grey 87

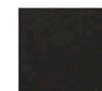


Compact:

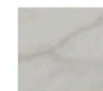
Beige



Black



Marbled
white



Wood



Solid
taupe



Solid
white

