

WEAVE

SWING WITH BASE
REF.: 77193



Materials

Powder coated aluminium structure. Rope.

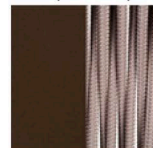
Dimensions

Length x width x height:
117 x 114 x 189 cm. / 46.9 x 44.9 x 74.4 in.
Seat height: 55 cm. / 21.65 in.
Weight: 32 Kg. / 70 lb.
Volume: 1,50 m³.

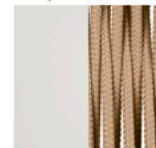
Finish

Weavings: Rope 8 mm Ø.

Taupe Grey
60 with
Taupe Rope



Cream 61
with Nougat
Rope



Black 59
with Black
Rope



Cushion content

Polyurethane Foam 35Kg HR Density.

Fabric

100% Solution Dyed Acrylic with stain and mildew resistant treatment.
Avoid condensation from hot and humidity. Good oil repellency.
Light fastness 7/8.
Warranty 5 years.

See available fabrics samples.