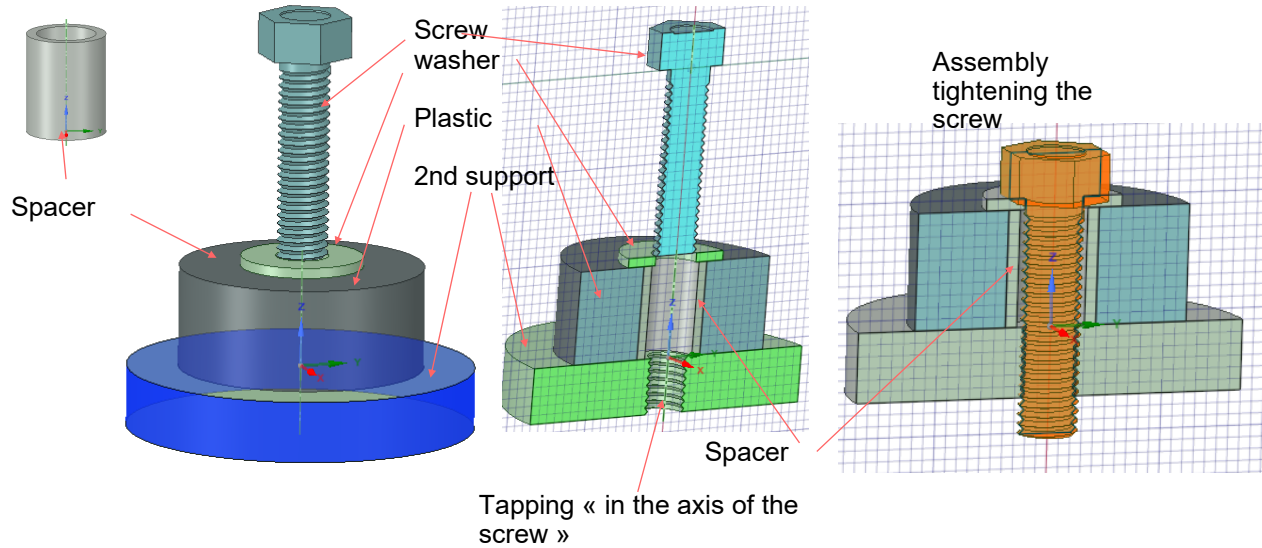


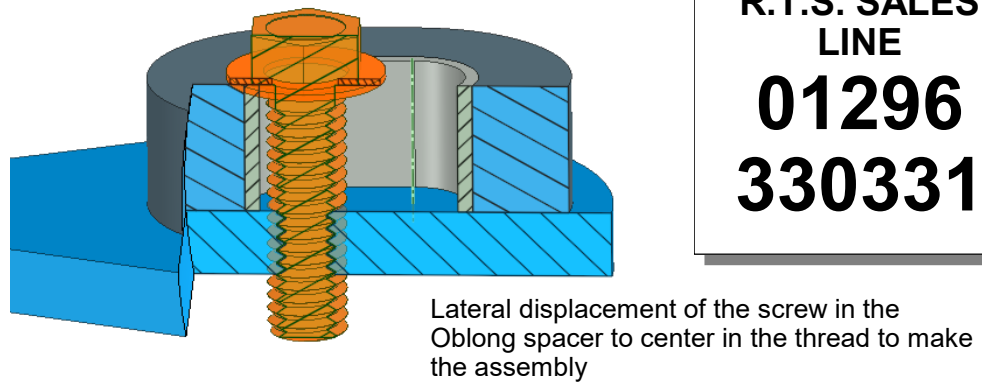
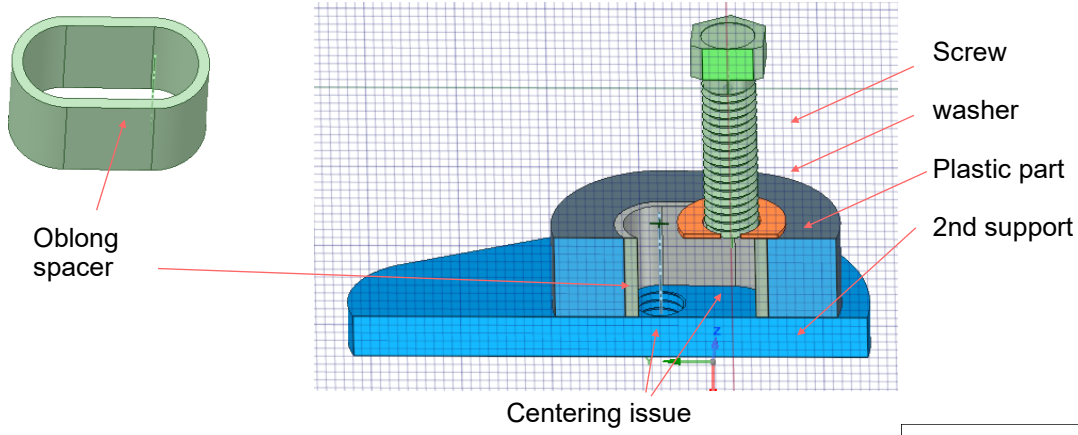
Ring-Oblong®

To date, when fixing a plastic part to another (plastic or metal), it is imperative to use a spacer to limit the compression of the plastic when tightening the screw.

The issue



In most cases the parts are fixed by more than one screw and we have a problem of tolerances between the axes. It is difficult to keep the tolerances between a plastic part and a second part. Customers ask for clearance on one or more positions. To date, they use Oblong spacers in order to position their plastic part as well as possible. Catching up on the interaxial clearance.



**R.T.S. SALES
LINE
01296
330331**

The issue is obtaining the oblong spacer and it's positioning in the plastic part (for both manufacturing and installation cost)

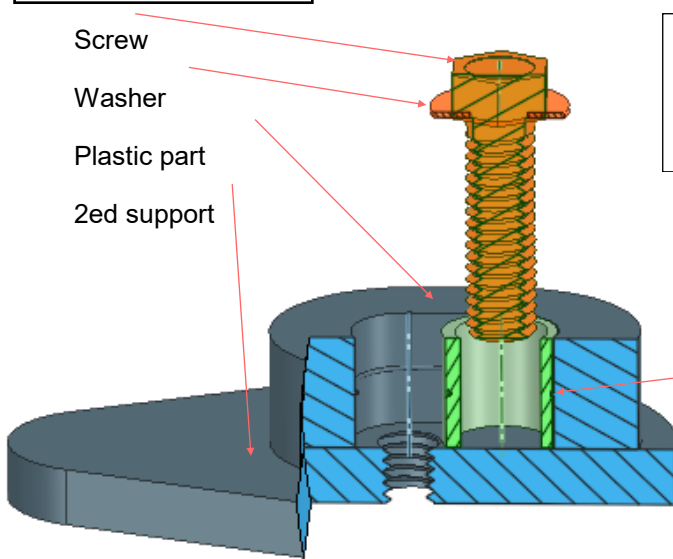
Ring-Oblong®

NEW SHAPE

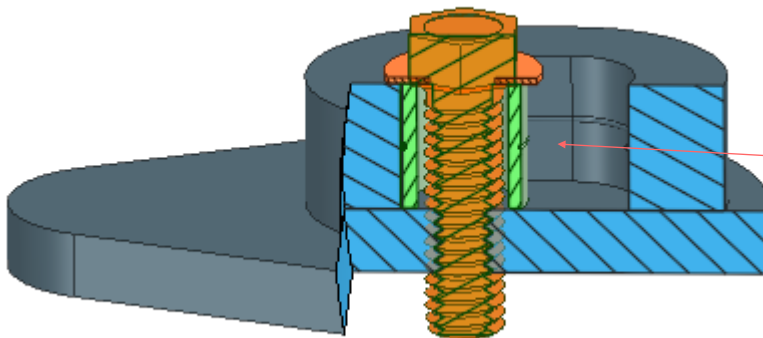
The solution

- Screw
- Washer
- Plastic part
- 2ed support

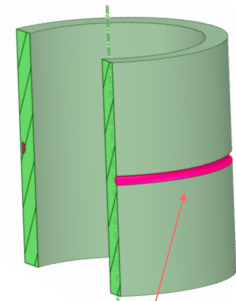
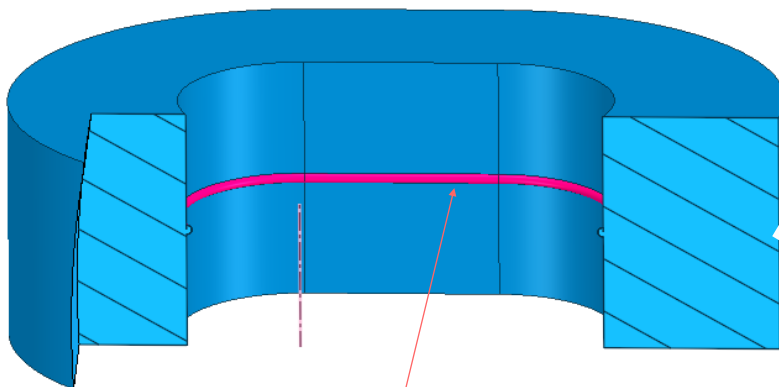
**R.T.S. SALES LINE
01296 330331**



Cylindrical spacer with groove to maintain in the plastic housing raw moulding. Assembly by clipping, by several lips of form defined by calculation SIMAF.



Centering of the screw in the threaded hole.



Shape to be obtained in the mould of the plastic part In order to maintain the spacer

Shape to put on the spacer to hold it in the plastic part

Ring-Oblong® Specification 1

48/XXX 01/2022

NOTA

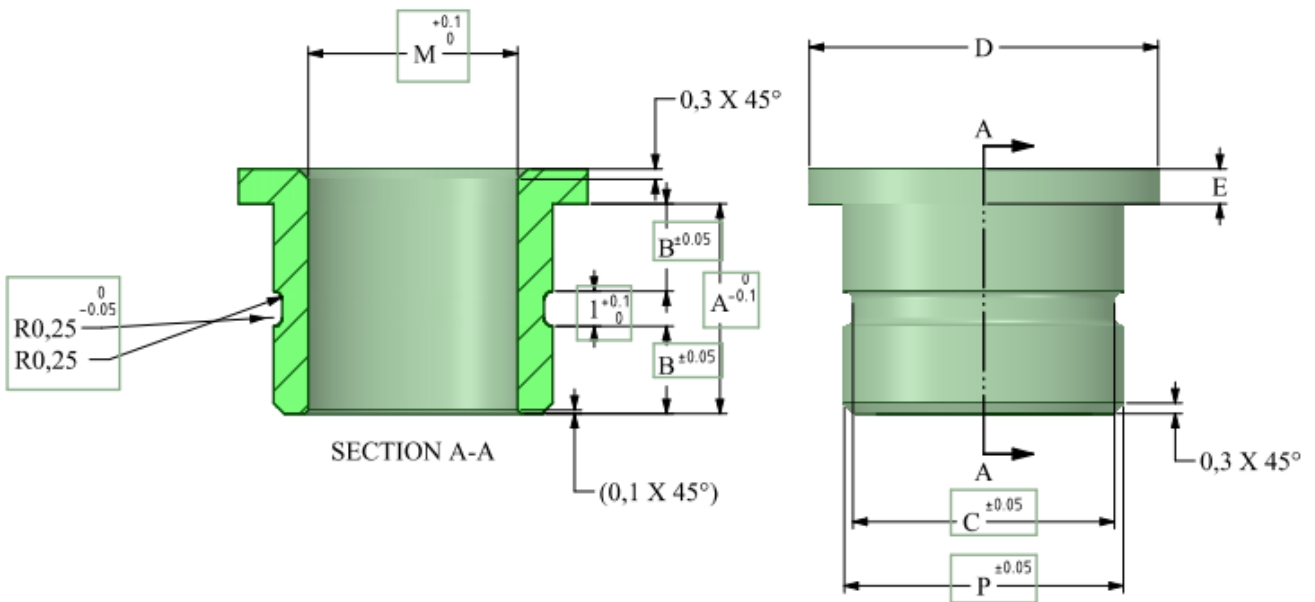
OBLONG4A = 4 for a screw M4
A lenght of insert 4 or 6

A Lenght will be every 2mm
 ex: A=4-8
 A can be 4-6 or 8mm

*Any other size available
 on request*

**R.T.S. SALES LINE
 01296 330331**

TECHNICAL DATA SHEET



Part n°	A	B	∅C	∅D	E	∅P	M
OBLONG4A	4-6	(A/2)-1	5,5	8	0,8	6	4
OBLONG5A	4-6	(A/2)-1	6,5	9	0,8	7	5
OBLONG6A	4-8	(A/2)-1	7,5	10	1	8	6
OBLONG8A	4-10	(A/2)-1	9.5	12	1	10	8

Notes

Other sizes on request

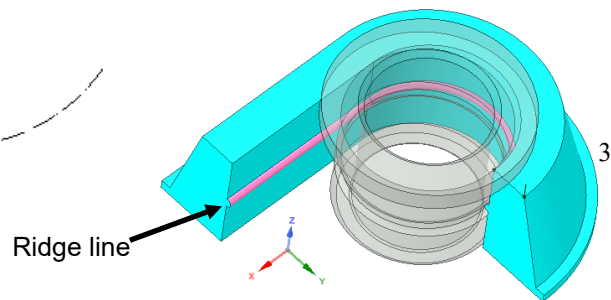
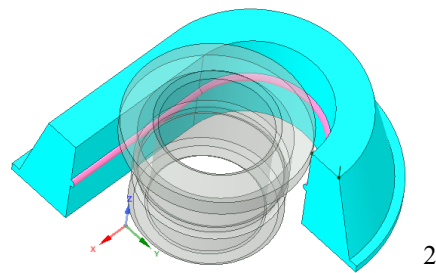
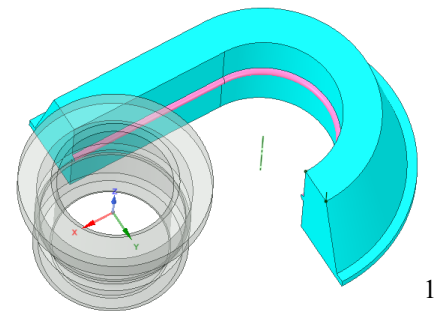
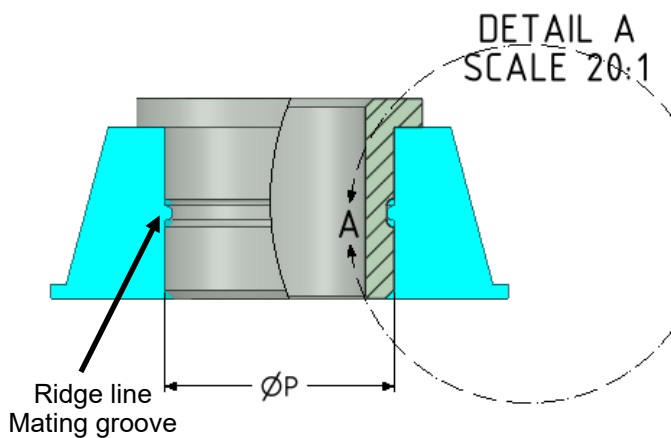
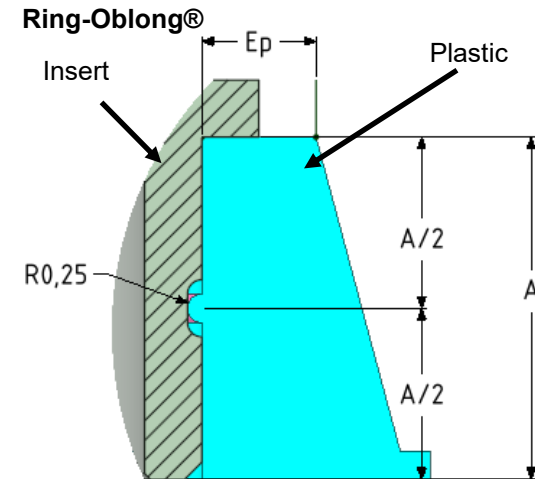
For more information, please contact RTS or your sales representative. SIMAF reserves the right to modify the specifications at any time.

Ring-Oblong® Specification 2

48/XXX 01/2022

R.T.S. SALES LINE
01296 330331

Plastic to be injected to receive the insert
Ep housing thickness $E_p = M/2$



The **Ring-Oblong®** spacer insert is pressed into the pre-made plastic part of your design. The ridge line (which is formed as part of the plastic molding) compresses and allows the insert to pass through the plastic part. Once the insert is pressed into the plastic part, the groove in the insert locks onto the ridge line preventing vertical movement but allowing for lateral movement within the plastic parts channel. This in turn allows easy insertion and placement of a fixing through the spacer insert. The channel in the plastic molding allows the spacer insert to be moved into place, in turn allowing for easy alignment of the plastic part with the fixing that it is being attached.

For more information, please contact RTS or your sales representative. SIMAF reserves the right to modify the specifications at any time.