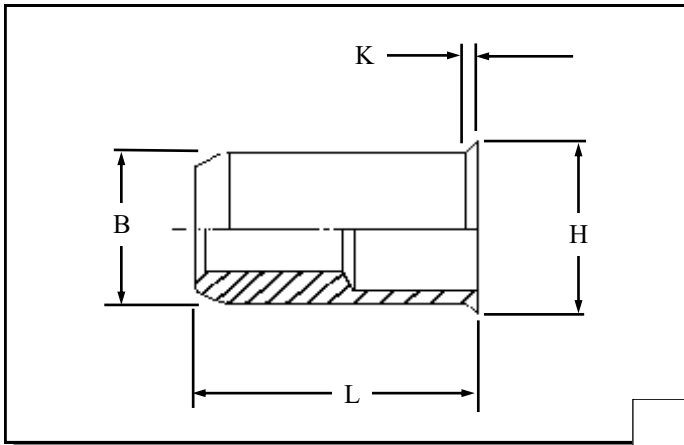


## RLOI IN STAINLESS STEEL



Round low profile head open ended Rivetnuts for material up to 8.20 mm thick

All dimensions in mm  
Material :- Stainless Steel (AISI 303)  
Finish :- Self colour

**R.T.S. SALES LINE**  
**01296 330331**

# TECHNICAL DATA SHEET

THREAD SIZE	GRIP RANGE	HOLE SIZE -0.0 +0.10	BODY DIA "B"	HEAD DIA "H" ± 0.10	LENGTH "L"	"K"	PART NUMBER
M3	0.50 to 1.10	5.10	5.00	5.80	6.70	0.30	RLOI-03011
	1.00 to 2.30				7.90		RLOI-03023
	2.00 to 3.20				9.10		RLOI-03032
M4	0.50 to 1.30	6.10	6.00	6.80	8.40	0.30	RLOI-04013
	1.00 to 3.00				10.00		RLOI-04030
	2.50 to 4.20				11.60		RLOI-04042
M5	0.50 to 1.50	7.10	7.00	8.00	9.60	0.40	RLOI-05015
	1.00 to 3.50				11.60		RLOI-05035
M6	0.50 to 1.50	9.10	9.00	10.00	11.90	0.40	RLOI-06015
	1.50 to 3.50				13.90		RLOI-06035
M8	0.50 to 1.80	11.10	11.00	12.00	14.10	0.40	RLOI-08018
	1.50 to 5.00				17.40		RLOI-08050
M10	0.50 to 3.20	13.10	13.00	14.40	19.00	0.50	RLOI-10032
	1.50 to 5.50				21.40		RLOI-10055
M12	1.00 to 4.20	16.10	16.00	17.40	22.50	0.50	RLOI-12042
	2.00 to 7.60				26.10		RLOI-12076
M16	0.5 to 8.20	21.10	21.00	22.40	27.60	0.50	RLOI-16082

For additional information and technical support please contact R.T.S. technical sales department . R.T.S. reserve the right to change specifications at any time . Information given is for guidance only and should not be used for specific design criteria without reference to our application engineers.