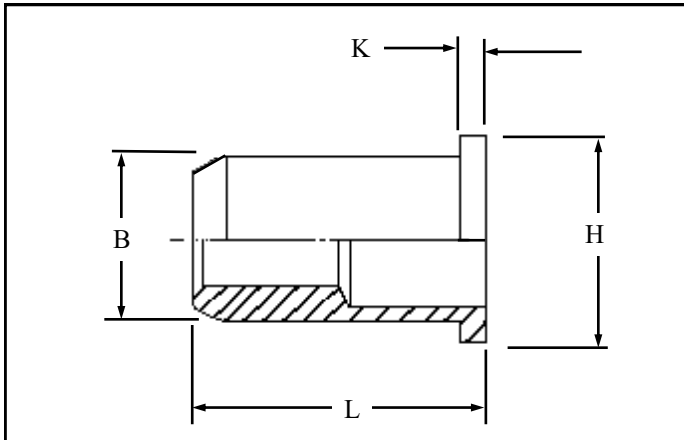


RFOS IN MILD STEEL



Round flat head open ended Rivetnuts for material up to 10.80 mm thick

All dimensions in mm
Material :- Mild Steel
Finish :- Zinc Plated Cr3
RoHS compliant

R.T.S. SALES LINE
01296 330331

TECHNICAL DATA SHEET

THREAD SIZE	GRIP RANGE	HOLE SIZE -0.0 +0.10	BODY DIA "B"	HEAD DIA "H" ± 0.10	LENGTH "L"	"K"	PART NUMBER
M2.5	0.10 to 1.10 1.00 to 1.70	4.10	4.00	6.00	6.90 7.50	0.60	RFOS-25011 RFOS-25017
M3	0.50 to 1.10 0.50 to 1.70 0.50 to 2.30 2.30 to 3.00	5.10	5.00	7.00	7.90 8.50 9.10 9.70	0.80	RFOS-03011 RFOS-03017 RFOS-03023 RFOS-03030
M4	0.50 to 1.30 0.50 to 2.10 0.50 to 3.00 2.90 to 3.70	6.10	6.00	8.00	10.10 10.90 11.70 12.50	0.80	RFOS-04013 RFOS-04021 RFOS-04030 RFOS-04037
M5	0.50 to 1.50 0.50 to 2.50 0.50 to 3.50 3.50 to 4.50	7.10	7.00	9.00	11.70 12.70 13.70 14.70	1.00	RFOS-05015 RFOS-05025 RFOS-05035 RFOS-05045
M6	0.50 to 1.50 0.50 to 2.50 0.50 to 3.50 3.50 to 4.50 4.50 to 5.50	9.10	9.00	11.00	14.40 15.40 16.40 17.40 18.40	1.20	RFOS-06015 RFOS-06025 RFOS-06035 RFOS-06045 RFOS-06055
M8	0.50 to 1.80 0.50 to 3.00 0.50 to 4.20 3.00 to 5.40 5.40 to 6.60	11.10	11.00	14.00	15.90 17.10 18.30 19.50 20.70	1.50	RFOS-08018 RFOS-08030 RFOS-08042 RFOS-08054 RFOS-08066
M10	0.50 to 2.20 0.50 to 3.70 0.50 to 5.50 5.20 to 6.80	13.10	13.00	16.00	21.30 22.80 24.50 25.80	1.50	RFOS-10022 RFOS-10037 RFOS-10055 RFOS-10068
M12	0.50 to 2.50 0.50 to 4.20 2.50 to 5.90 2.50 to 6.60 5.00 to 7.60	16.10	16.00	20.00	23.90 25.70 27.50 28.30 29.30	1.70	RFOS-12025 RFOS-12042 RFOS-12059 RFOS-12066 RFOS-12076

For additional information and technical support please contact R.T.S. technical sales department . R.T.S. reserve the right to change specifications at any time . Information given is for guidance only and should not be used for specific design criteria without reference to our application engineers.