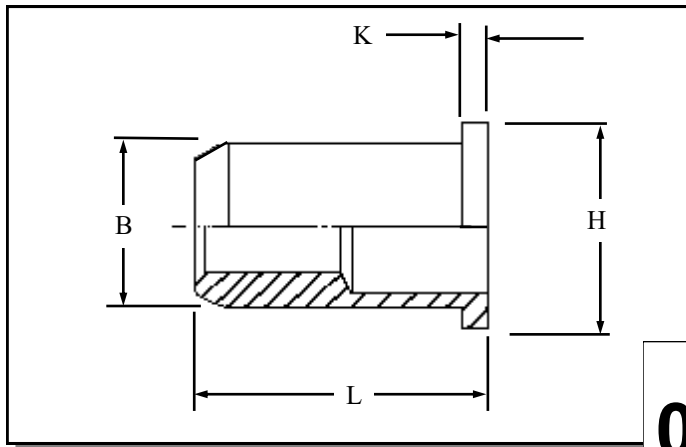


RFOI IN STAINLESS STEEL



Round flat head open ended Rivetnuts for material up to 7.60 mm thick

All dimensions in mm
Material :- Stainless Steel (AISI 303)
Finish :- self colour

R.T.S. SALES LINE
01296 330331

TECHNICAL DATA SHEET

THREAD SIZE	GRIP RANGE	HOLE SIZE -0.0 +0.10	BODY DIA "B"	HEAD DIA "H" ± 0.10	LENGTH "L"	"K"	PART NUMBER
M3	0.50 to 1.10 0.50 to 1.70 1.10 to 2.30 1.80 to 3.00	5.10	5.00	7.00	7.40 8.00 8.60 9.20	0.80	RFOI-03011 RFOI-03017 RFOI-03023 RFOI-03030
M4	0.50 to 1.30 0.50 to 2.10 1.30 to 3.00 2.00 to 3.70	6.10	6.00	8.00	9.10 9.90 10.70 11.50	0.80	RFOI-04013 RFOI-04021 RFOI-04030 RFOI-04037
M5	0.50 to 1.50 0.50 to 2.50 1.50 to 3.50 2.50 to 4.50	7.10	7.00	9.00	10.50 11.50 12.50 13.50	1.00	RFOI-05015 RFOI-05025 RFOI-05035 RFOI-05045
M6	0e.50 to 1.50 0.50 to 2.50 1.50 to 3.50 2.50 to 4.50 3.50 to 5.50	9.10	9.00	11.00	13.00 14.00 15.00 16.20 17.20	1.20	RFOI-06015 RFOI-06025 RFOI-06035 RFOI-06045 RFOI-06055
M8	0.50 to 1.80 0.50 to 3.00 1.80 to 4.20 1.80 to 5.00 3.50 to 6.60	11.10	11.00	14.00	15.40 16.60 17.80 18.80 20.30	1.50	RFOI-08018 RFOI-08030 RFOI-08042 RFOI-08050 RFOI-08066
M10	0.50 to 2.20 0.50 to 3.70 2.20 to 5.50 3.50 to 6.80	13.10	13.00	16.00	19.80 21.30 22.80 24.30	1.50	RFOI-10022 RFOI-10037 RFOI-10055 RFOI-10068
M12	0.50 to 4.20 2.50 to 5.90 5.90 to 7.60	16.10	16.00	20.00	22.30 25.00 27.70	1.70	RFOI-12042 RFOI-12059 RFOI-12076

For additional information and technical support please contact R.T.S. technical sales department . R.T.S. reserve the right to change specifications at any time . Information given is for guidance only and should not be used for specific design criteria without reference to our application engineers.