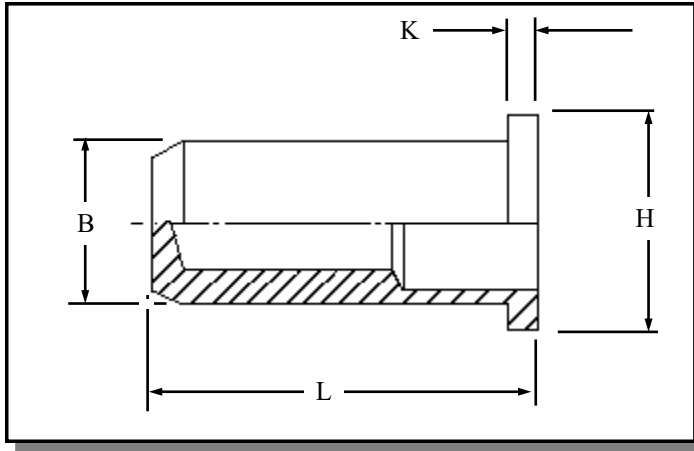


RFCS-CD IN MILD STEEL



Round flat head closed ended Rivetnuts for material up to 5.50 mm thick

All dimensions in mm
Material :- Mild Steel
Finish :- Zinc Plated Cr3
RoHS compliant

**R.T.S. SALES LINE
01296 330331**

TECHNICAL DATA SHEET

THREAD SIZE	GRIP RANGE	HOLE SIZE -0.0 +0.10	BODY DIA "B"	HEAD DIA "H" ± 0.10	LENGTH "L"	"K"	PART NUMBER
M4	0.50 to 3.00	6.10	6.00	10.00	14.75	0.75	RFCS-04030-CD
	3.00 to 4.50				16.25		RFCS-04045-CD
M5	0.50 to 3.00	7.10	7.00	11.00	18.00	1.00	RFCS-05030-CD
	3.00 to 5.50				20.50		RFCS-05055-CD
M6	0.50 to 3.00	9.10	9.00	13.00	21.50	1.50	RFCS-06035-CD
	3.00 to 5.50				24.50		RFCS-06055-CD
M8	0.50 to 3.00	11.10	11.00	16.00	22.50	1.50	RFCS-08030-CD
	3.00 to 5.50				25.50		RFCS-08055-CD

For additional information and technical support please contact R.T.S. technical sales department . R.T.S. reserve the right to change specifications at any time . Information given is for guidance only and should not be used for specific design criteria without reference to our application engineers.