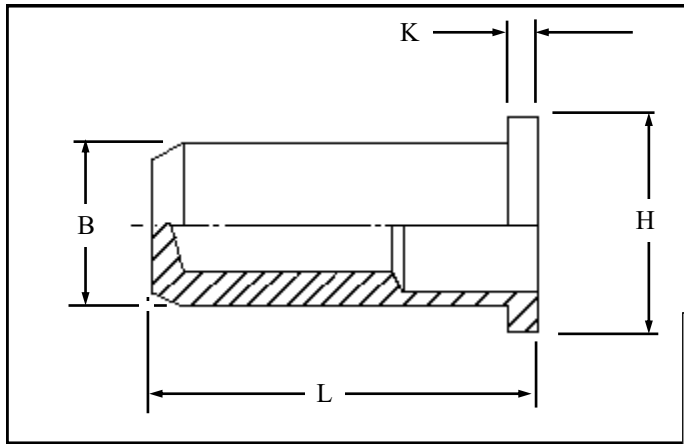


RFCI IN STAINLESS STEEL



Round flat head closed ended Rivetnuts for material up to 7.60 mm thick

All dimensions in mm
Material :- Stainless Steel (AISI 303)
Finish :- Self colour

R.T.S. SALES LINE
01296 330331

TECHNICAL DATA SHEET

THREAD SIZE	GRIP RANGE	HOLE SIZE -0.0 +0.10	BODY DIA "B"	HEAD DIA "H" ± 0.10	LENGTH "L"	"K"	PART NUMBER
M3	0.50 to 1.10	5.10	5.00	7.00	11.40	0.80	RFCI-03011 RFCI-03017 RFCI-03023 RFCI-03030
	1.10 to 1.70				12.00		
	1.70 to 2.30				12.60		
	2.30 to 3.00				13.20		
M4	0.50 to 1.30	6.10	6.00	8.00	14.80	0.80	RFCI-04013 RFCI-04021 RFCI-04029 RFCI-04037
	1.30 to 2.10				15.60		
	2.10 to 2.90				16.40		
	2.90 to 3.70				17.20		
M5	0.50 to 1.50	7.10	7.00	9.00	17.00	1.00	RFCI-05015 RFCI-05025 RFCI-05035 RFCI-05045
	1.50 to 2.50				18.00		
	2.50 to 3.50				19.00		
	3.50 to 4.50				20.00		
M6	0.50 to 1.50	9.10	9.00	11.00	21.00	1.20	RFCI-06015 RFCI-06025 RFCI-06035 RFCI-06045 RFCI-06055
	1.50 to 2.50				22.00		
	2.50 to 3.50				23.00		
	3.50 to 4.50				24.00		
	4.50 to 5.50				25.00		
M8	0.50 to 1.80	11.10	11.00	14.00	24.10	1.50	RFCI-08018 RFCI-08030 RFCI-08042 RFCI-08054 RFCI-08066
	1.80 to 3.00				25.30		
	3.00 to 4.20				26.50		
	4.20 to 5.40				27.70		
	5.40 to 6.60				28.90		
M10	0.50 to 2.20	13.10	13.00	16.00	31.50	1.50	RFCI-10022 RFCI-10037 RFCI-10052 RFCI-10068
	2.20 to 3.70				33.30		
	3.70 to 5.20				34.30		
	5.20 to 6.80				35.80		
M12	0.50 to 2.50	16.10	16.00	20.00	34.20	1.70	RFCI-12025 RFCI-12042 RFCI-12059 RFCI-12076
	2.50 to 4.20				36.00		
	4.20 to 5.90				37.80		
	5.90 to 7.60				39.60		

For additional information and technical support please contact R.T.S. technical sales department . R.T.S. reserve the right to change specifications at any time . Information given is for guidance only and should not be used for specific design criteria without reference to our application engineers.