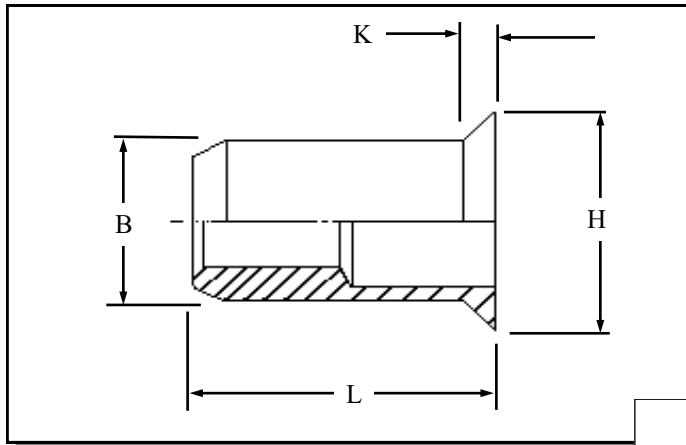


RCOI-CD316 IN MILD STEEL



Round Countersunk head
open ended Rivetnuts for
material up to 4.50 mm thick

All dimensions in mm
Material :- 316 Stainless Steel
Contains >2% Molybden
Finish :- Self Colour

R.T.S. SALES LINE
01296 330331

THREAD SIZE	GRIP RANGE	HOLE SIZE -0.0 +0.10	BODY DIA "B"	HEAD DIA "H" ± 0.10	LENGTH "L"	"K"	PART NUMBER
M4	1.20 to 3.00	6.10	6.00	8.00	12.00	1.00	RCOI-04030-CD316
M5	1.20 to 3.50	7.10	7.00	9.00	12.00	1.00	RCOI-05035-CD316
M6	1.70 to 4.50	9.10	9.00	12.00	17.00	1.50	RCOI-06045-CD316
M8	1.70 to 4.50	11.10	11.00	14.00	17.50	1.50	RCOI-08045-CD316
M10	1.70 to 4.50	13.10	13.00	16.00	22.50	1.50	RCOI-10045-CD316

For additional information and technical support please contact R.T.S. technical sales department . R.T.S. reserve the right to change specifications at any time . Information given is for guidance only and should not be used for specific design criteria without reference to our application engineers.