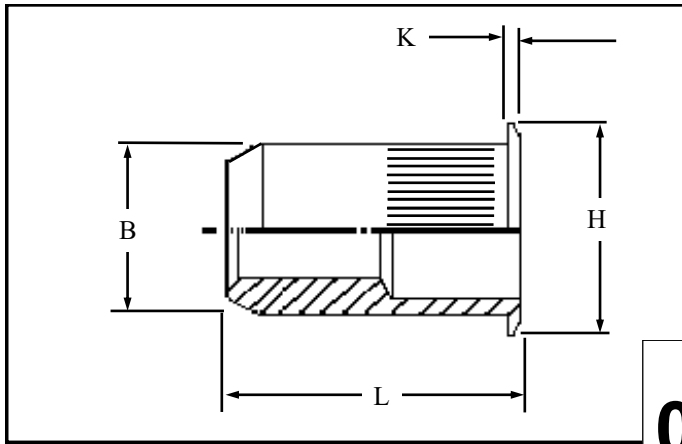


KMOS IN STEEL



Knurled large pan head open ended Rivetnuts for material up to 7.70 mm thick.

All dimensions in mm
Material :- Steel
Finish :- Zinc Plated Cr3
RoHS compliant

R.T.S. SALES LINE
01296 330331

TECHNICAL DATA SHEET

THREAD SIZE	GRIP RANGE	HOLE SIZE -0.0 +0.10	HEAD DIA "H" ± 0.10	LENGTH "L"	"K"	PART NUMBER
M4	0.50 to 2.00	6.75	9.91	11.43	0.76	KMOS-04020-J
	2.00 to 3.30			12.70		KMOS-04033-J
M5	0.50 to 3.30	7.60	10.54	12.83	0.76	KMOS-05033-J
	3.30 to 5.70			15.62		KMOS-05057-J
M6	0.70 to 4.20	10.00	12.70	15.49	0.76	KKOS-06042-J
	4.20 to 6.60			18.03		KMOS-06066-J
M8	0.70 to 3.80	13.50	17.40	18.42	0.89	KMOS-08038J
	3.80 to 7.90			21.37		KMOS-08079-J
M10	0.70 to 3.80	13.50	17.40	18.42	0.89	KMOS-10038-J
	3.80 to 7.90			21.37		KMOS-10079-J
M12	1.60 to 5.10	17.45	21.97	30.40	0.89	KMOS-12051-J
	5.10 to 8.90			34.21		KMOS-12089-J
	8.90 to 12.70			38.02		KMOS-12127-J

For additional information and technical support please contact R.T.S. technical sales department . R.T.S. reserve the right to change specifications at any time . Information given is for guidance only and should not be used for specific design criteria without reference to our application engineers.