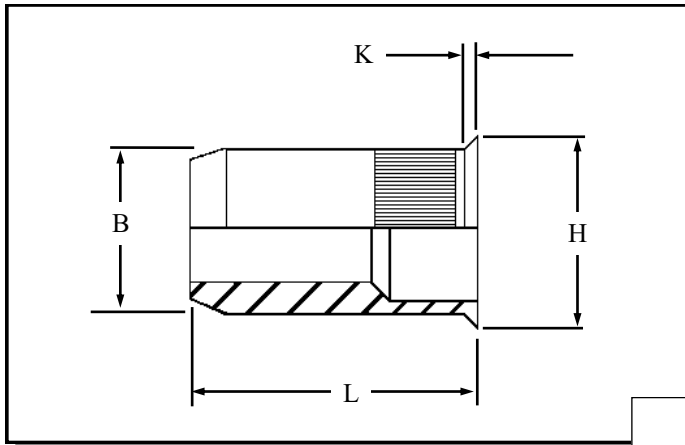


KLOI IN STAINLESS STEEL



Knurled Round low profile head
open ended Rivetnuts for
material up to 7.60 mm thick

All dimensions in mm
Material :- Stainless Steel (AISI 303)
Finish :- Self colour

R.T.S. SALES LINE
01296 330331

TECHNICAL DATA SHEET

THREAD SIZE	GRIP RANGE	HOLE SIZE -0.0 +0.10	BODY DIA "B"	HEAD DIA "H" ± 0.10	LENGTH "L"	"K"	PART NUMBER
M3	0.50 to 1.10	5.10	5.00	5.80	6.70	0.30	KLOI-03011 KLOI-03023 KLOI-03032
	1.00 to 2.30				7.90		
	2.00 to 3.20				9.10		
M4	0.50 to 1.30	6.10	6.00	6.80	8.40	0.30	KLOI-04013 KLOI-04030 KLOI-04042
	1.00 to 3.00				10.00		
	2.50 to 4.20				11.60		
M5	0.50 to 1.50	7.10	7.00	8.00	9.60	0.40	KLOI-05015 KLOI-05035
	1.00 to 3.50				11.60		
M6	0.50 to 1.50	9.10	9.00	10.00	11.90	0.40	KLOI-06015 KLOI-06035
	1.50 to 3.50				13.90		
M8	0.50 to 1.80	11.10	11.00	12.00	14.10	0.40	KLOI-08018 KLOI-08050
	1.50 to 5.00				17.40		
M10	0.50 to 3.20	13.10	13.00	14.40	19.00	0.50	KLOI-10032 KLOI-10055
	1.50 to 5.50				21.40		
M12	1.00 to 4.20	16.10	16.00	17.40	22.50	0.50	KLOI-12042 KLOI-12076
	2.00 to 7.60				26.10		

For additional information and technical support please contact R.T.S. technical sales department . R.T.S. reserve the right to change specifications at any time . Information given is for guidance only and should not be used for specific design criteria without reference to our application engineers.