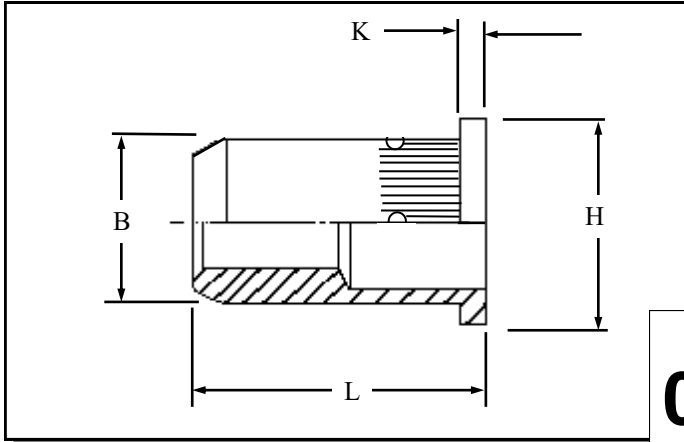


KFOS-BCTMG IN STEEL



Knurled flat head open ended Rivetnuts for material up to 14.00 mm thick

All dimensions in mm
Material :- Mild Steel
Finish :- Zinc Plated Cr3 RoHS compliant

R.T.S. SALES LINE
01296 330331

THREAD SIZE	GRIP RANGE	HOLE SIZE - 0.00 + 0.10	BODY DIA "B"	HEAD DIA "H" ± 0.10	LENGTH "L"	"K"	PART NUMBER
M4	0.50 to 4.00	7.00	7.00	10.00	14.00	0.80	KFOS-04040-BCTMG
M5	0.50 to 5.00	8.10	8.00	11.00	17.00	1.00	KFOS-05050-BCTMG
	3.00 to 7.00				19.00		KFOS-05070-BCTMG
M6	0.50 to 6.00	9.10	9.00	13.00	19.50	1.50	KFOS-06060-BCTMG
	4.00 to 9.00				22.50		KFOS-06090-BCTMG
M8	0.50 to 6.00	11.10	11.00	16.00	20.50	1.50	KFOS-08060-BCTMG
	0.50 to 8.00				23.00		KFOS-08080-BCTMG
	4.50 to 11.00				26.00		KFOS-08110-BCTMG
	6.50 to 13.00				28.00		KFOS-08130-BCTMG
M10	0.80 to 7.00	13.10	13.00	19.00	26.00	2.00	KFOS-10070-BCTMG
	5.50 to 14.00				34.00		KFOS-10140-BCTMG

For additional information and technical support please contact R.T.S. technical sales department . R.T.S. reserve the right to change specifications at any time . Information given is for guidance only and should not be used for specific design criteria without reference to our application engineers.