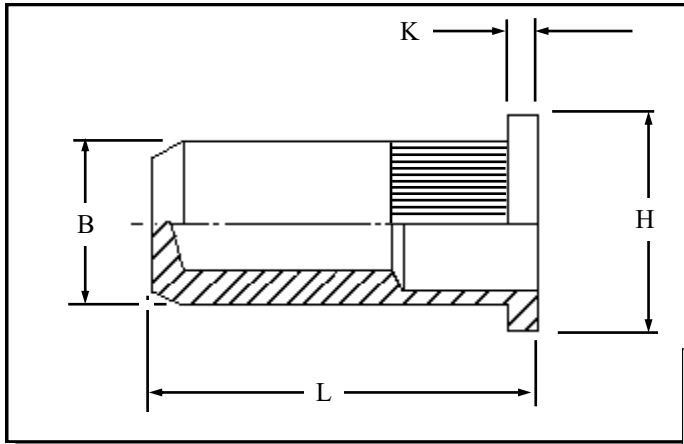


## KFCS-J IN MILD STEEL



Round flat head closed ended Rivetnuts for material up to 3.20 mm thick

All dimensions in mm  
Material :- Mild Steel  
Finish :- Zinc Plated Cr3  
RoHS compliant

**R.T.S. SALES LINE**  
**01296 330331**

# TECHNICAL DATA SHEET

THREAD SIZE	GRIP RANGE	HOLE SIZE -0.0 +0.10	BODY DIA "B"	HEAD DIA "H" ± 0.10	LENGTH "L"	"K"	PART NUMBER
M4	0.50 to 2.50	6.10	6.00	9.00	17.30	0.80	KFCS-04025-J
M5	0.50 to 2.50	7.10	7.00	10.00	18.50	1.00	KFCS-05025-J
M6	0.50 to 3.00	9.10	9.00	13.00	24.00	1.50	KFCS-06030-J
M8	1.00 to 3.20	11.10	11.00	16.00	27.50	1.50	KFCS-08032-J
M10	1.00 to 3.20	13.10	13.00	19.00	32.00	2.00	KFCS-10032-J

For additional information and technical support please contact R.T.S. technical sales department . R.T.S. reserve the right to change specifications at any time . Information given is for guidance only and should not be used for specific design criteria without reference to our application engineers.