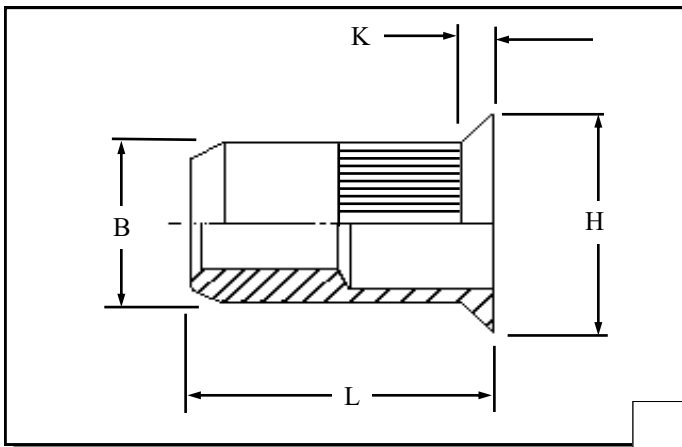


KCOS-J IN STEEL



Knurled Countersunk head
open ended Rivetnuts for
material up to
4.50 mm thick

All dimensions in mm
Material :- Mild Steel
Finish :- Zinc Plated Cr3
RoHS compliant

R.T.S. SALES LINE
01296 330331

THREAD SIZE	GRIP RANGE	HOLE SIZE -0.0 +0.10	BODY DIA "B"	HEAD DIA "H" ± 0.10	LENGTH "L"	"K"	PART NUMBER
M4	1.50 to 3.50	6.00	5.95	8.50	11.50	1.50	KCOS-04035-J
M5	1.50 to 4.00	7.00	6.95	9.50	13.00	1.50	KCOS-05040-J
M6	1.50 to 4.50	9.00	8.95	11.50	16.00	1.50	KCOS-06045-J
M8	1.50 to 4.50	11.00	10.95	13.50	18.50	1.50	KCOS-08045-J
M10	1.50 to 4.50	13.00	12.90	15.00	22.00	1.50	KCOS-10045-J

For additional information and technical support please contact R.T.S. technical sales department . R.T.S. reserve the right to change specifications at any time . Information given is for guidance only and should not be used for specific design criteria without reference to our application engineers.