

UNICEL INDUSTRIAL FILTER CARTRIDGES



Replacement Products For:

- Standard 10" In-Line Housing
- 19½" Harmsco
- Standard 20" Slim-Line Housing
- 10" Big Blue, Big White
- 20" Big Blue, Big White

For over 35 years, UNICEL has been the industry leader in manufacturing filter elements for the pool and spa industry.

Unicel®

Unicel cartridges are manufactured with 100% synthetic filter media. No resins, surfactants or binders to break down or leach out during the filtration process.

Unicel filter medias are produced using the latest technology in spun-bonding equipment. This process produces continuous filament filter medias with exceptionally high isotropic strength.

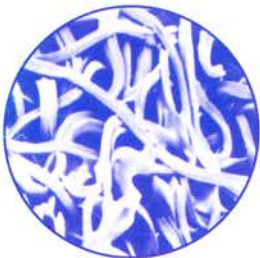
Unicel cartridges are capped with vinyl plastisol specifically formulated with FDA acceptable components. As a result, Unicel cartridges are ideal as pre-filter or primary sediment filters in potable water applications.

Unicel cartridges are comprised of pleated material to maximize dirt holding capacity and extend the time between filter change outs.

Unicel filter medias do not contain "cellulose fibers" and are therefore mildew and rot resistant.

Unicel filter media, made without binders, offers a high degree of porosity. This allows the media to function as both a surface filter and, to some degree, a torturous path depth filter.

Unicel filter cartridges are ideal for all types of water and light industrial applications.



100% polyester continuous filament fiber



100% polypropylene continuous filament fiber

Unicel[®]

2³/₄" Outside Diameter x 9³/₄" Overall Length / Standard 10" In-line Housing*

Part Number	Media	Nominal Micron	Plastisol End Cap Color	Qty/Case	Core
T-0797-50-B	Polyester	50	Light Blue	100	1.093" I.D.
T-0497-20-B	Polypropylene	20	Light Blue	100	.056" Wall Thickness
T-0697-10-B	Polypropylene	10	Light Blue	100	Standard Wall
T-0597-05-B	Polyester	5	Dark Blue	100	Molded Polypropylene

*Available in 4 and 6 sq. ft.

2³/₄" Outside Diameter x 19¹/₂" Overall Length / Harmsco Replacement

Part Number	Media	Nominal Micron	Plastisol End Cap Color	Qty/Case	Core
T-0418-20-B*	Polypropylene	20	Light Blue	50	1.093" I.D.
T-0518-05-B*	Polyester	5	Dark Blue	50	.056" Wall Thickness
T-0419-20-B†	Polypropylene	20	Light Blue	50	Standard Wall
T-0519-05-B†	Polyester	5	Dark Blue	50	Molded Polypropylene

* 12 sq. ft. † 8 sq. ft.

2³/₄" Outside Diameter x 20" Overall Length / Standard 20" Slim Line Housing

Part Number	Media	Nominal Micron	Plastisol End Cap Color	Qty/Case	Core
T-0720-50-B	Polyester	50	Light Blue	50	1.093" I.D.
T-0420-20-B	Polypropylene	20	Light Blue	50	.056" Wall Thickness
T-0620-10-B	Polypropylene	10	Light Blue	50	Standard Wall
T-0520-05-B	Polyester	5	Dark Blue	50	Molded Polypropylene

4⁵/₈" Outside Diameter x 9³/₁₆" Overall Length / 10" Big Blue, Big White Replacement

Part Number	Media	Nominal Micron	Plastisol End Cap Color	Qty/Case*	Core
K-40715-B	Polyester	50	White	20	1.093" I.D.
K-40415-B	Polypropylene	20	White	20	.142" Wall Thickness
K-40615-B	Polypropylene	10	White	20	Heavy Wall
K-40515-B	Polyester	5	White	20	Molded Polypropylene

* Individually Shrinkwrapped

4⁵/₈" Outside Diameter x 20" Overall Length / 20" Big Blue, Big White Replacement

Part Number	Media	Nominal Micron	Plastisol End Cap Color	Qty/Case*	Core
K-40730-B	Polyester	50	White	20	1.093" I.D.
K-40430-B	Polypropylene	20	White	20	.142" Wall Thickness
K-40630-B	Polypropylene	10	White	20	Heavy Wall
K-40530-B	Polyester	5	White	20	Molded Polypropylene

* Individually Shrinkwrapped