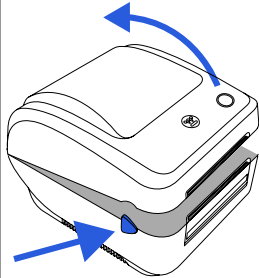


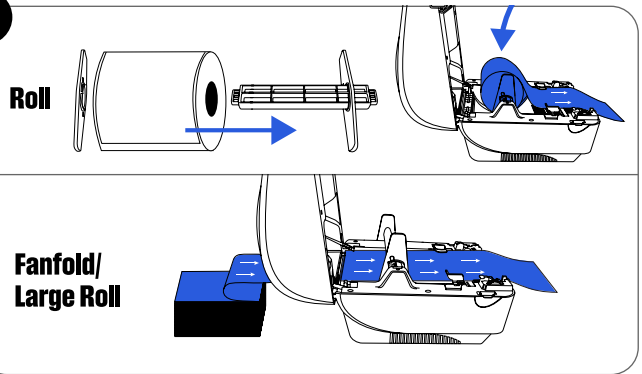


# Quick Start Guide

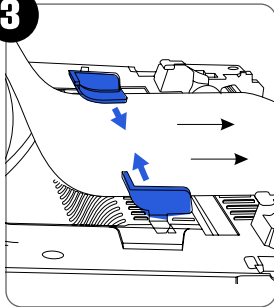
1



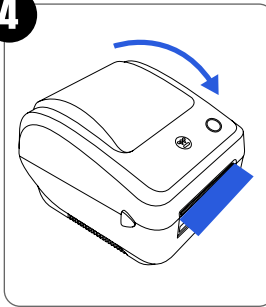
2



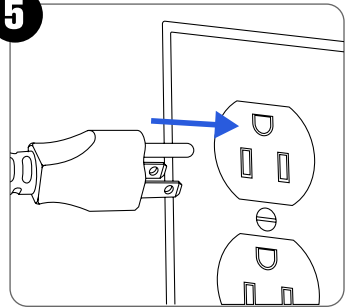
3



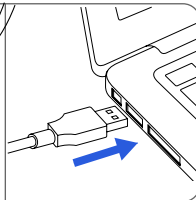
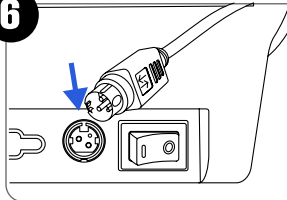
4



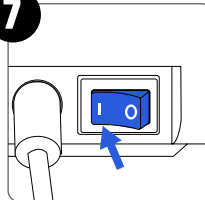
5



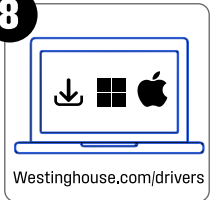
6



7



8

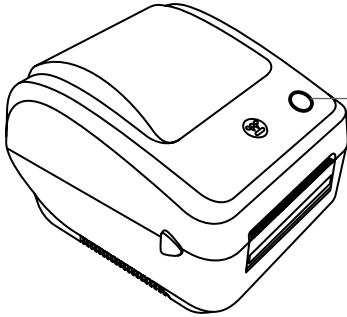


(877) 474-4900

Westinghouse.com/support



# Operation



## Feed Button



### Blinking Red

Restart printer, then run calibration



### Solid Red

Press the cover down to close



### Solid Purple

Calibrating label

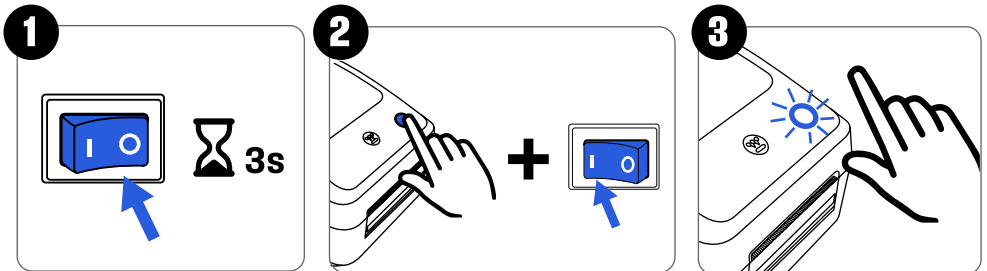


### Solid Blue

Ready to print. Press to feed label.

## How to manually recalibrate the printer:

After labels are correctly placed in the printer, turn printer off for 3 seconds. Then, turn the printer back on while holding the feed button (located on top of the printer). When the printer beeps or the light on the feed button blinks, let go of the feed button. Printer will calibrate the label.



(877) 474-4900

[Westinghouse.com/support](https://www.westinghouse.com/support)