



ALWAYS THE  
SAFE CHOICE!

# secu **ENTRY**

Short instruction for creating a locking  
system for holiday accommodation.

**secuENTRY 7094 AbFeWo Software**

## Content

<b>1</b>	<b>SECUENTRY ABFEWO SOFTWARE GENERAL.....</b>	<b>2</b>
1.1	Data backup and uninstalling.....	2
<b>2</b>	<b>SECUENTRY SETUP SOFTWARE.....</b>	<b>3</b>
<b>3</b>	<b>SECUENTRY ABFEWO INIT SOFTWARE.....</b>	<b>4</b>
<b>3.1</b>	<b>Create / open client .....</b>	<b>5</b>
3.1.1	Create new client.....	5
3.1.2	Creating a local client.....	5
3.1.3	Open an existing client.....	8
<b>3.2</b>	<b>Lock management.....</b>	<b>10</b>
3.2.1	Setting locks .....	10
<b>3.3</b>	<b>Configuration .....</b>	<b>12</b>
3.3.1	AbFeWo Code Setup.....	12
<b>3.4</b>	<b>Administration .....</b>	<b>16</b>
3.4.1	User .....	17
<b>3.5</b>	<b>Data transmission .....</b>	<b>21</b>
3.5.1	Data transmission .....	23
3.5.1.1	Transmission via BURG WÄCHTER KeyApp.....	25
3.5.1.2	Transfer via the USB adapter of the software.....	25
<b>4</b>	<b>SECUENTRY ABFEWO SOFTWARE .....</b>	<b>29</b>
<b>4.1</b>	<b>Configuration – Settings.....</b>	<b>30</b>
<b>4.2</b>	<b>Lock management.....</b>	<b>34</b>
4.2.1	AbFeWo Code.....	35
4.2.2	History.....	38

## 1 secuENTRY AbFeWo Software General

secuENTRY AbFeWo Software is used for the secure generation of guest codes to enable simple and secure access control of holiday apartments, holiday homes or large holiday resorts.

This short guide focuses mainly on the steps required to set up a lock administration or to generate the desired guest codes.

Start by installing the software. Execute the file "secuENTRY AbFeWo.exe".

**Important:** Please note that a total of three software programs (secuENTRY AbFeWo Init, secuENTRY Setup and secuENTRY AbFeWo) and possibly some other necessary additional programs are installed one after the other.

Please perform the installation completely through all steps.



**Fig. 1: Desktop icons for the three software programs that are installed**

Connect the USB dongle supplied to the PC to complete the software installation. Then create a new local database and specify the memory location and password.

Note: All information on installation, data backup and uninstalling can be found in detail in the short guide for the initial setup of the secuENTRY PRO software.

[https://www.burg.biz/wp-content/uploads/2018/03/BW\\_secuENTRY-7083-Software-PRO\\_web.pdf](https://www.burg.biz/wp-content/uploads/2018/03/BW_secuENTRY-7083-Software-PRO_web.pdf)

### 1.1 Data backup and uninstalling

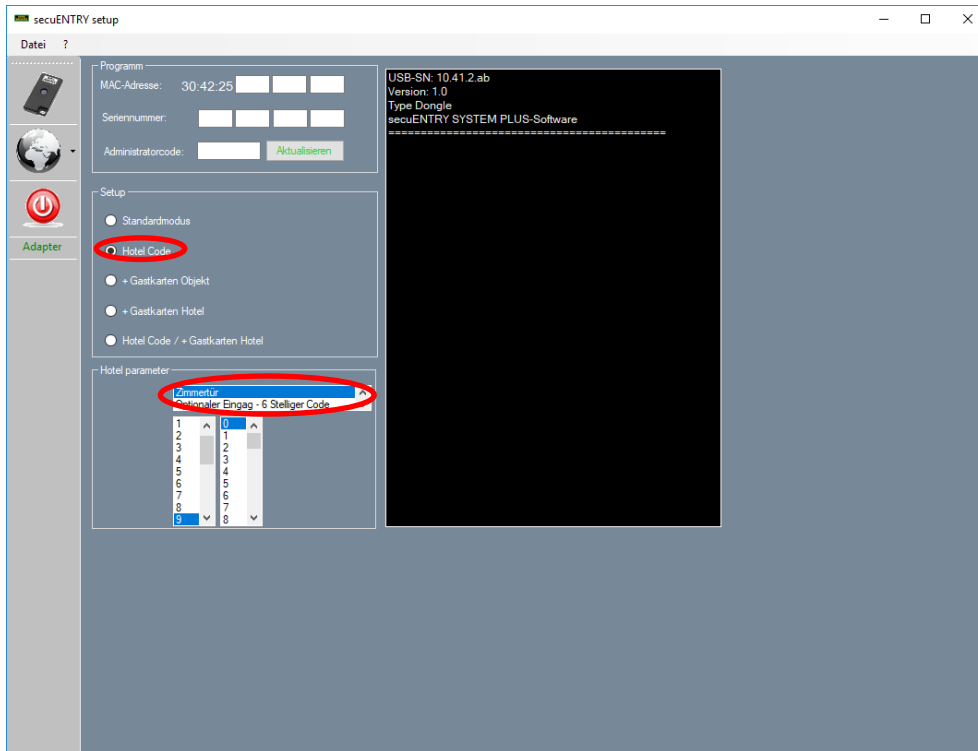
For a data backup, the complete database folder must be backed up. The folder and folder path are defined during the initial setup.

Also save this folder to a different location. If the data is lost it is then easy to import it again.

**When the software is uninstalled, the user data is retained.**

## 2 secuENTRY Setup Software

Before starting to setup the locking plan for the holiday accommodation first switch all profile cylinders to AbFeWo mode using the secuENTRY Setup Software after the software has been successfully installed.

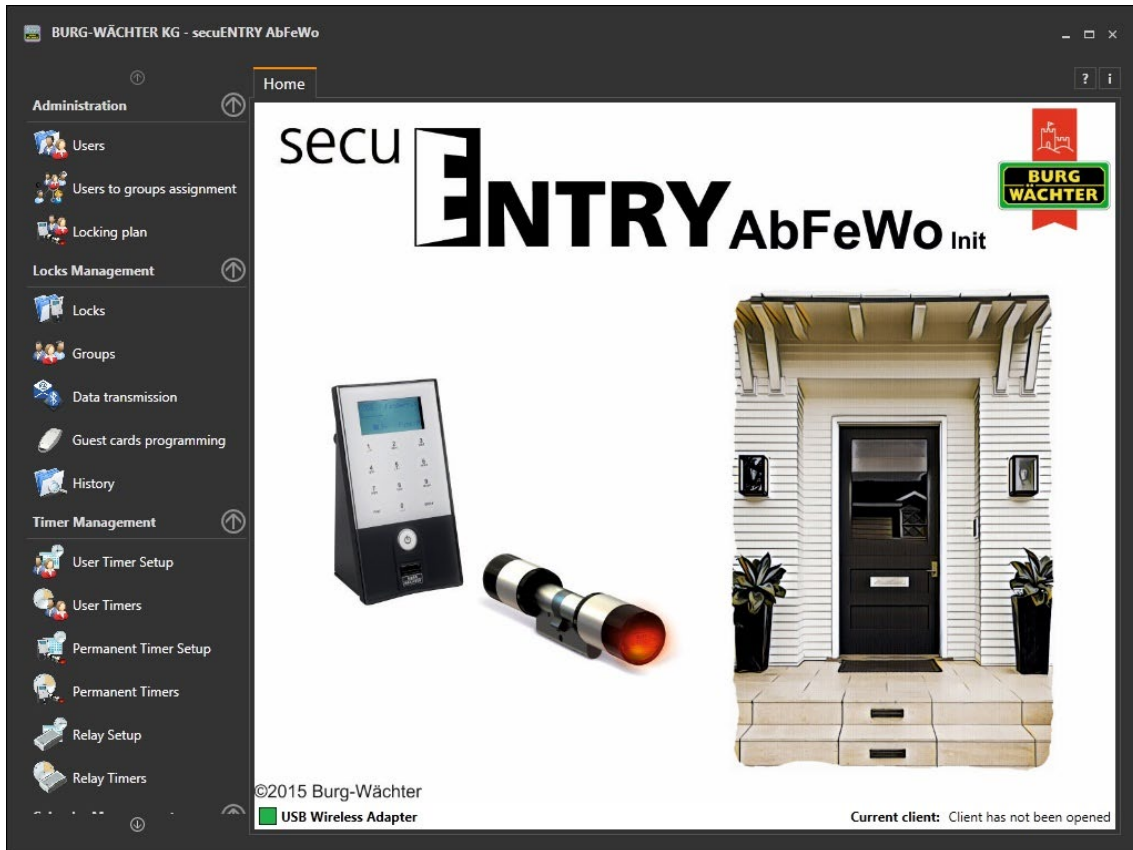


**Fig.2: SecuENTRY setup software, setting the cylinders to room door in hotel mode**

Select whether to program a room door or an optional entry.

### 3 secuENTRY AbFeWo Init Software

After successfully installing and converting the profile cylinders using the secuENTRY Setup Software the following window appears when the secuENTRY AbFeWo Init Software is opened.



**Fig. 3: Start window secuENTRY AbFeWo Init Software**

The system automatically recognises whether a USB adapter that is valid for this software is connected; it will be visible in the lower left corner of the main window.

The main categories are shown on the left side.

- Administration
- Locks management
- Timer management
- Calendar management
- Configuration
- Client management

These in turn are divided into individual subcategories. Use the arrow next to the categories to hide or show these subcategories. The subcategories are selected by a left click and the respective menu appears in the main window.

Please note that the QR code enclosed with the devices is required to teach the individual devices using the software. This code can be read in via a webcam or a smartphone camera.

**Attention: If the QR code is lost, it is no longer possible to teach the devices to**

**the software. Please keep it in a safe place!**

*Tip: The QR code can also be scanned in electronic form or saved as a photo on a secured data carrier.*

### 3.1 Create / open client

Any number of clients can be managed using the *secuENTRY AbFeWo Init Software*. The client's name is equated with a specific property.

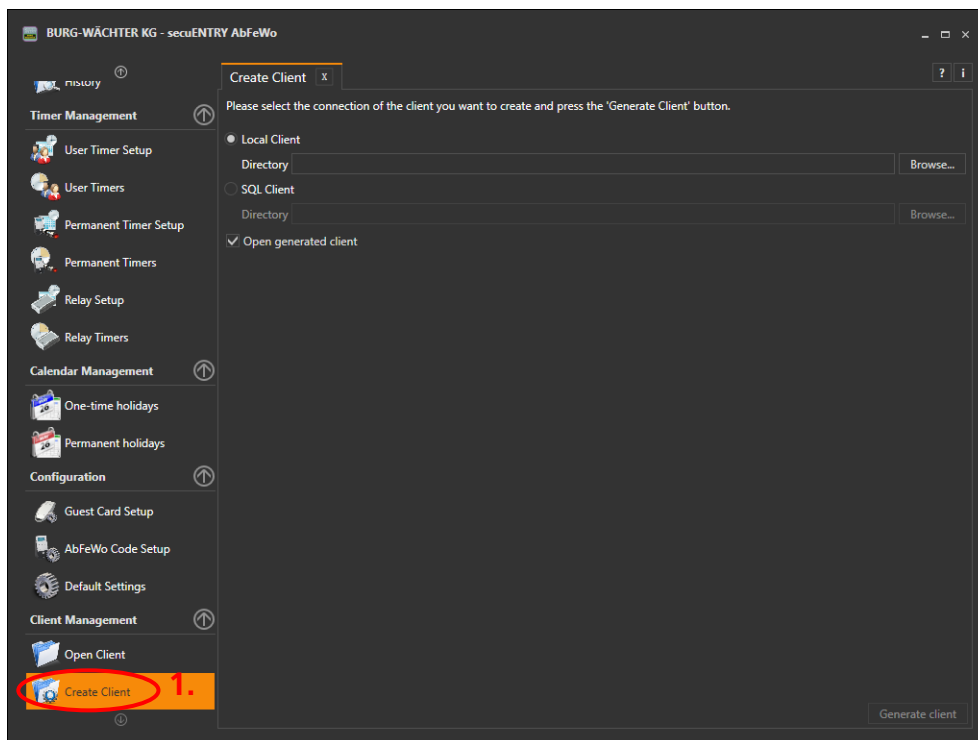
Start creating a new client or calling up an existing client to set up a locking system or edit an existing locking system.

Under the heading **Client management** you can differentiate between

- Open client and
- Create client

#### 3.1.1 Create new client

After installation you must first create a new client if a new local database has not been set up. Select the menu **1**, the following window will open:



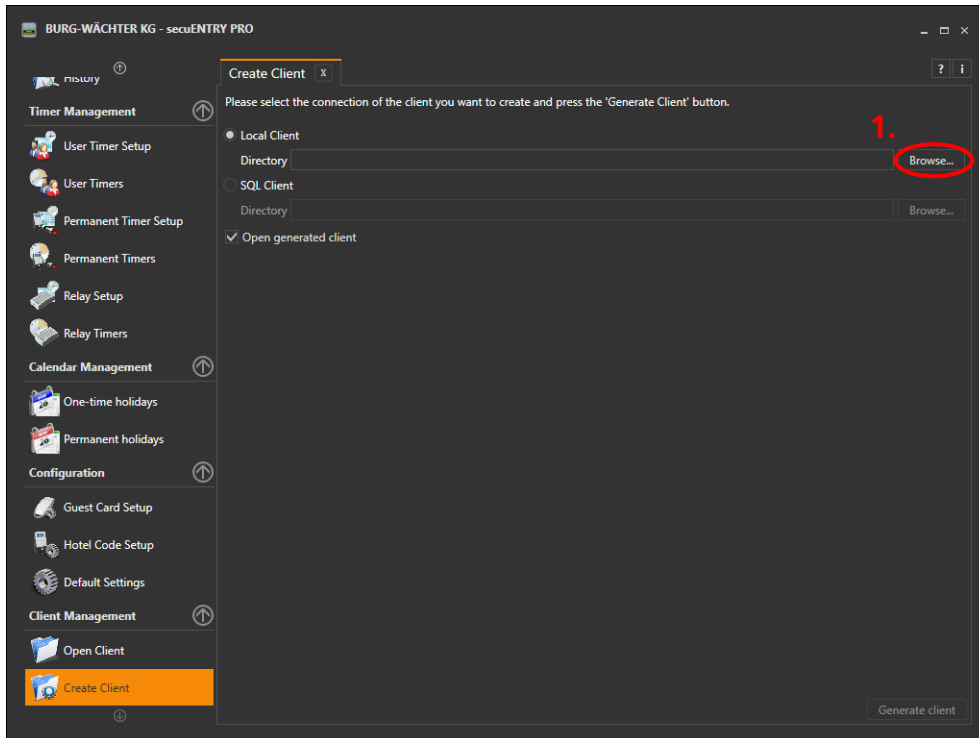
**Fig. 4: Client Wizard**

Proceed as followings to create a new client:

- Specify whether a local client or an SQL client is to be created. With an SQL client the file is on a server, in contrast to the local client.

#### 3.1.2 Creating a local client

- When creating a local client the software suggests a memory location. Click on button **1** to access a submenu.

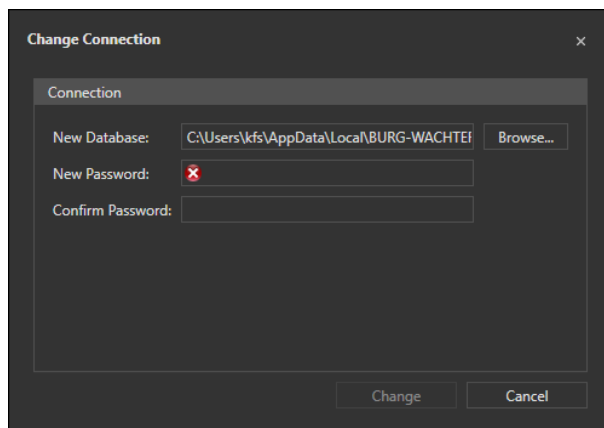


**Fig. 5: Client Wizard**

The default location under Windows 7 is:

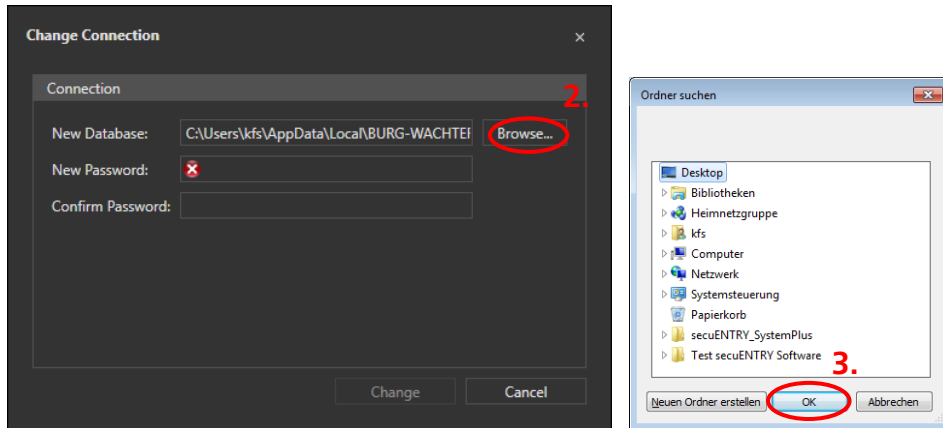
***C:/ProgramData/BURG-WÄCHTER/secuENTRY/TSE.sdf***

The client is saved with the extension .sdf.



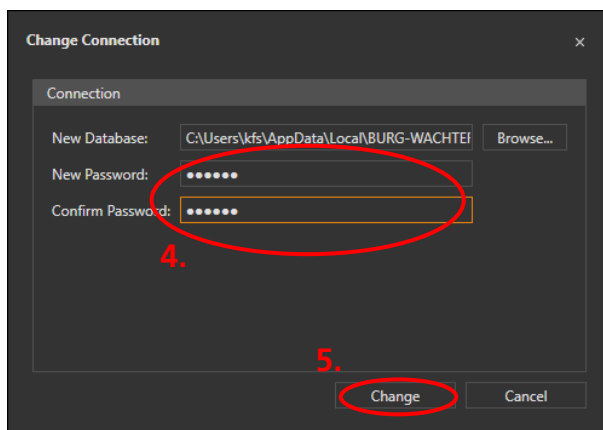
**Fig. 6: Directory and password input**

- You may also select the memory location yourself (such as a USB stick). Click on the button **2** and select the memory location.



**Fig. 7: Setup Software local database**

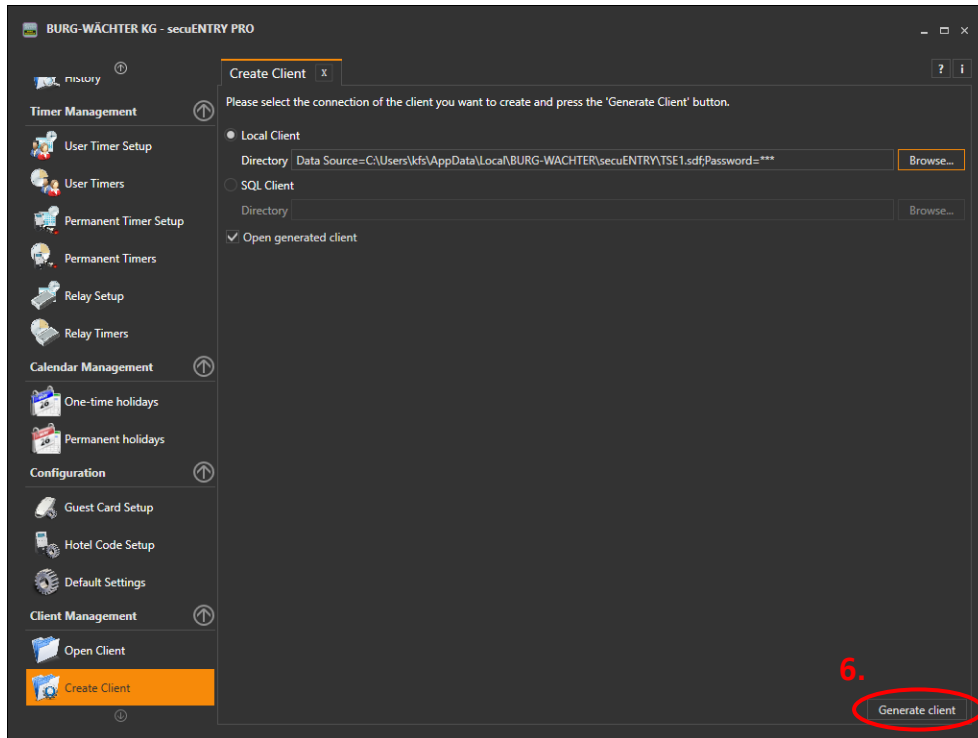
- Enter a password in the fields provided **4**, to safeguard against unauthorised access to the data. This password must have at least three digits. Confirm your entries by clicking on button **5**.



**Fig. 8: Directory and password input**

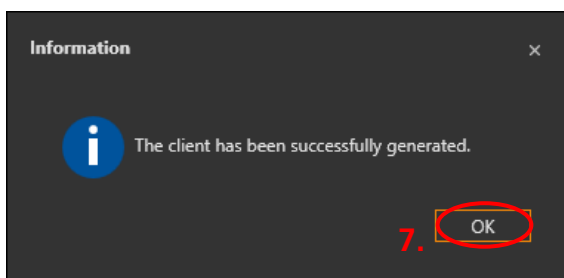
- Confirm your entries by clicking on button **6**.





**Fig. 9: Create client**

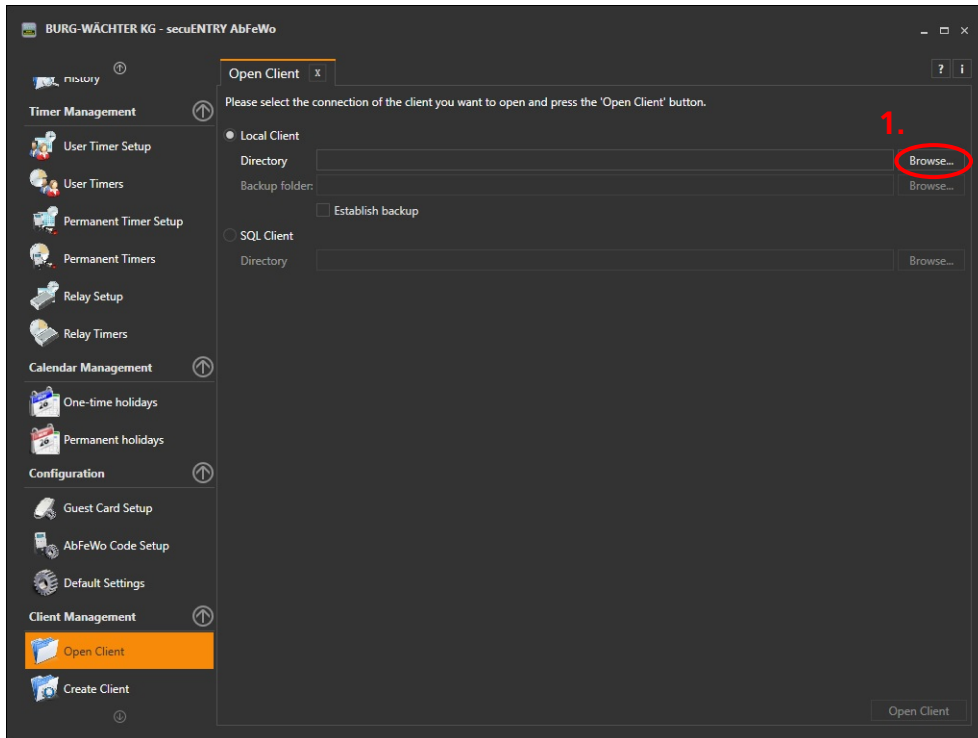
- Confirm the info message by clicking on the OK button.



**Fig. 10: Client successfully created.**

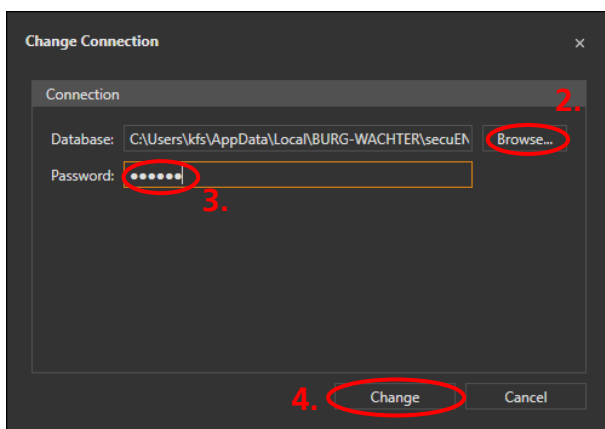
### 3.1.3 Open an existing client

This item is used to open an existing client, for example to edit the data.



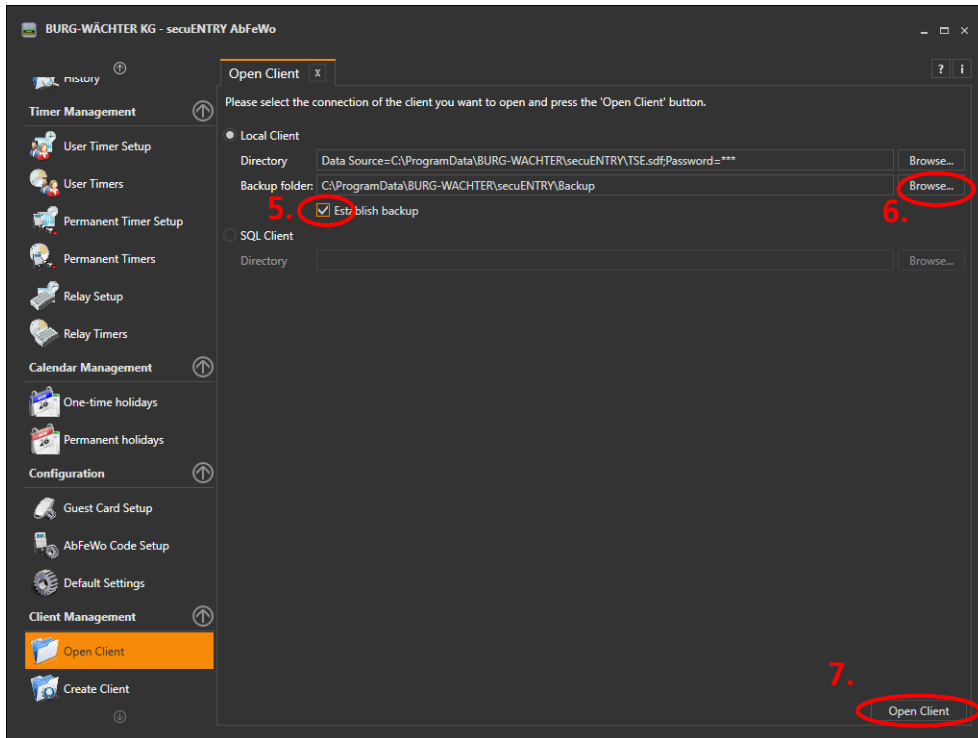
**Fig. 11: Open client**

Click on button **1** to select the appropriate path and then the file in **2**. Obtain authorization by entering the password **3**. Finally accept the entries **4**.



**Fig. 12: Directory and password input**

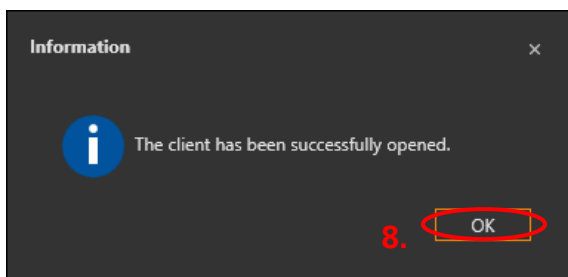
If you want to create a backup of your database, select "Establish backup" **5**. This will activate the backup folder line. If you want to change the suggested folder, again use button **6** and confirm your selection with OK.



**Fig. 13: Open client**

A backup is automatically saved each time the database is opened.

Confirm your entries to open a client by clicking on button **7** and confirm the info message that appears **8**.



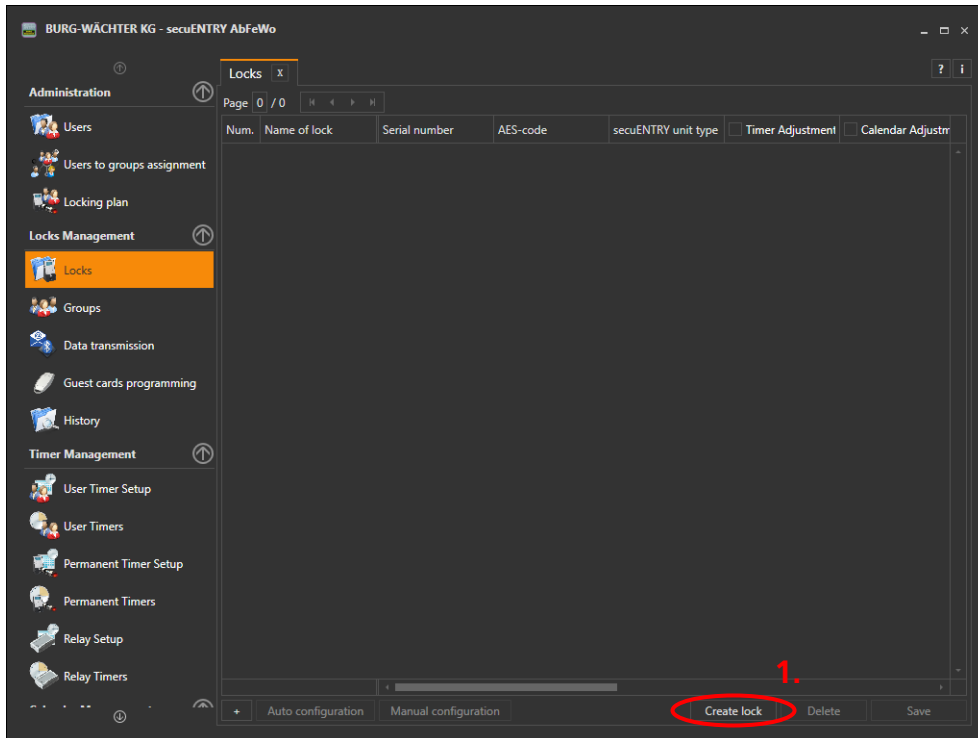
**Fig. 14: Client successfully opened**

## 3.2 Lock management

This menu item covers all functions related to setting up the individual locks, group assignment to the respective locks, data transmission, history or guest cards programming.

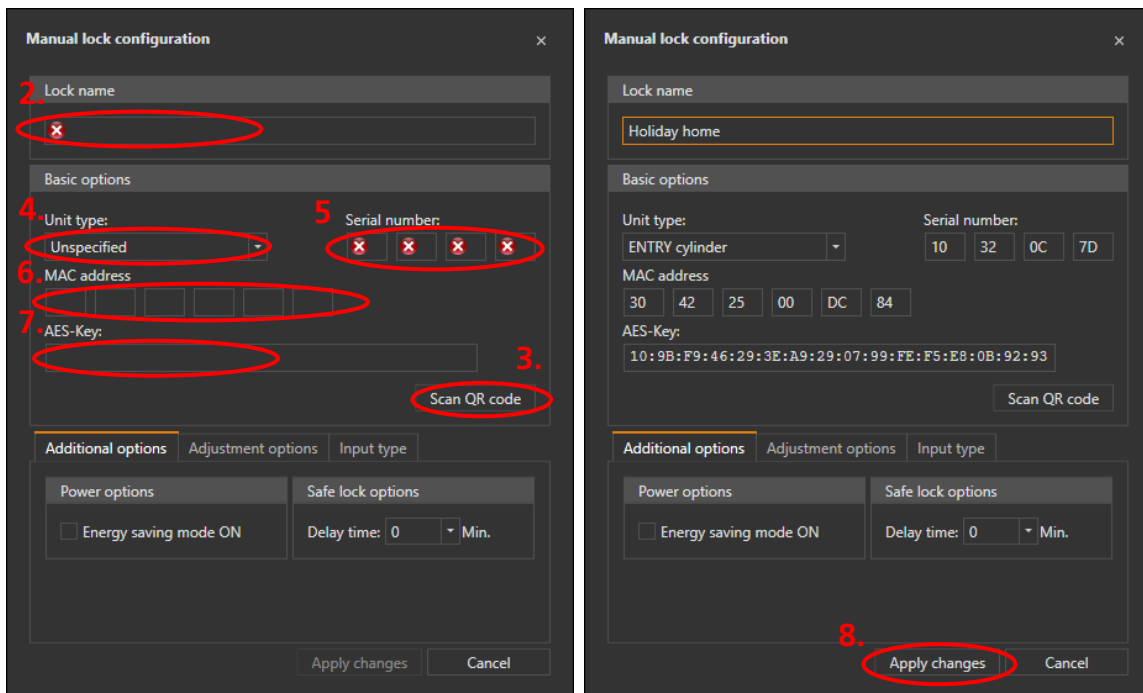
### 3.2.1 Setting locks

In the subchapter **Setting locks** the desired locking cylinders are added or existing locks can be configured. When selected, the following window opens:



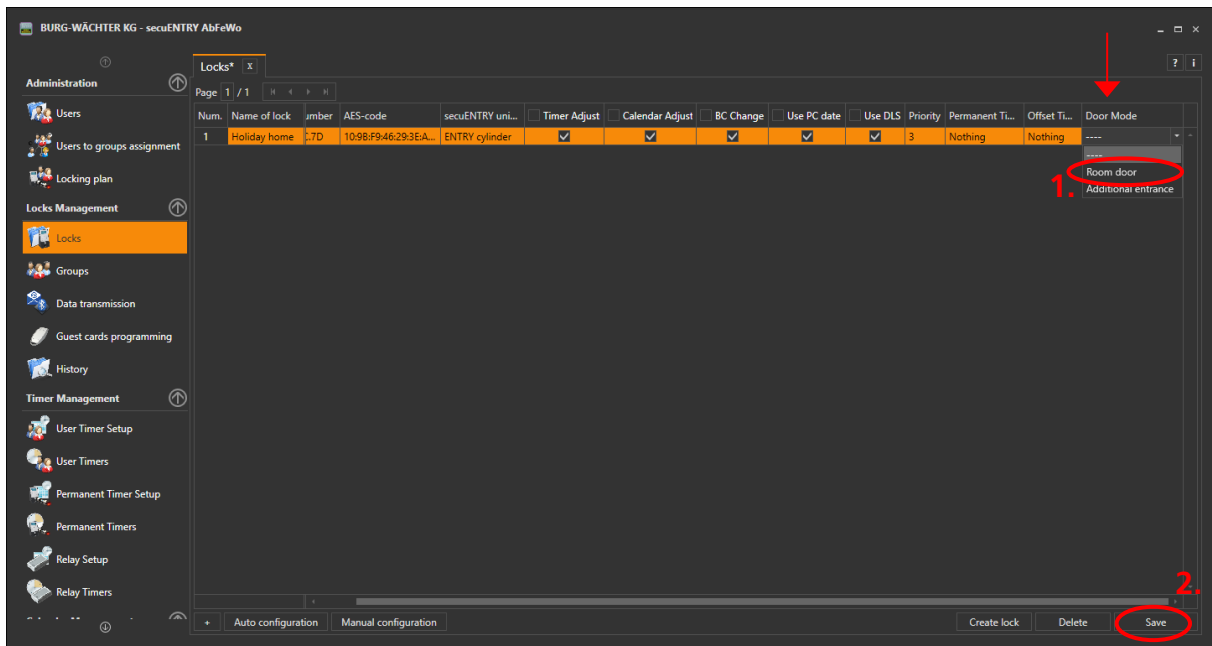
**Fig. 15: Lock management "Setting locks"**

Add a new lock **1**, the following window opens:



**Fig. 16: Lock configuration**

Enter a lock name in field **2**. Then scan the QR code of the lock using a webcam **3** all required data is filled in automatically. Alternatively, you can enter the unit type **4**, the serial number **5**, the MAC address **6** and the AES key **7** manually according to the specifications on the QR slip. Apply the entries **8**. The lock is then listed in the lock list.



**Fig. 17: Lock list**

Important: In the **Door mode** column each lock must be specified as either a room door or an optional entrance. Select the respective field and make the setting from the drop-down menu **1**.

Optional entries are common doors such as the main entrance or the garage.

To create a locking system for holiday accommodation, this allocation in the Door mode column is mandatory, i.e. the locks to be programmed must in this case be defined as room doors or optional entrances.

Save your entries **2**.

For further details on setting a lock and the various setting options, please refer to the video instructions for the secuENTRY PRO Software, which you can find on our website.

[https://www.youtube.com/watch?v=r\\_TEEJkpESk&list=PLIoNikBuvx3vcyClbHVpmV69fGRz0pw\\_E&index=2&t=2s](https://www.youtube.com/watch?v=r_TEEJkpESk&list=PLIoNikBuvx3vcyClbHVpmV69fGRz0pw_E&index=2&t=2s)

### 3.3 Configuration

General program settings are made in the category *Configuration*.

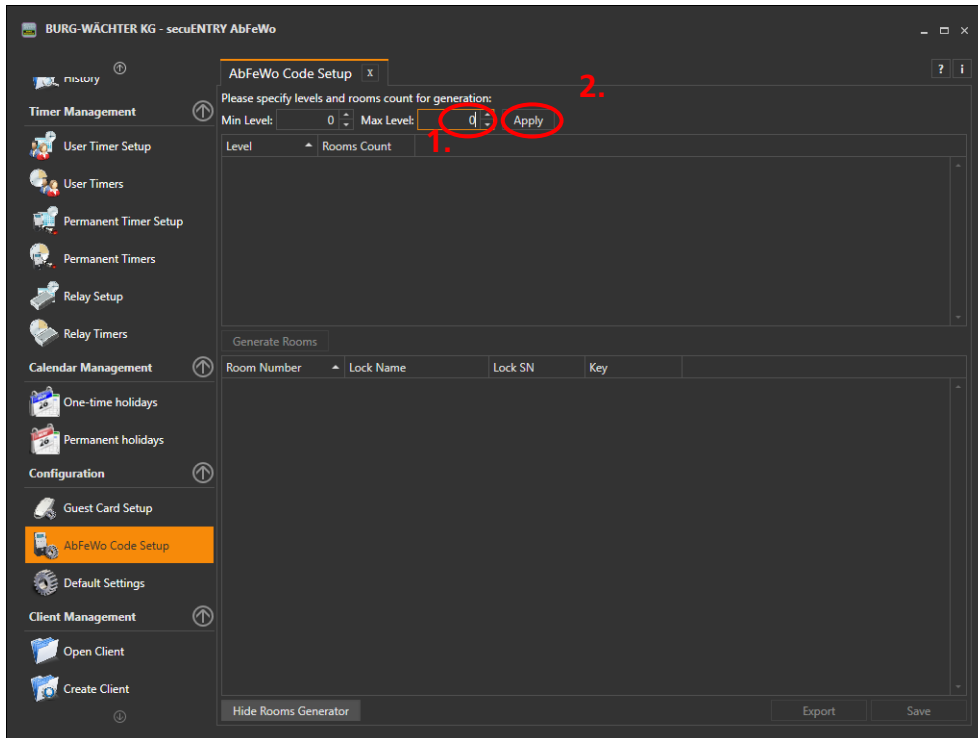
Further details can also be found in the additional video tutorial. In the following only **AbFeWo Code Setup** is described.

#### 3.3.1 AbFeWo Code Setup

All of the settings that are necessary for assigning locks to the respective rooms are made in this menu.

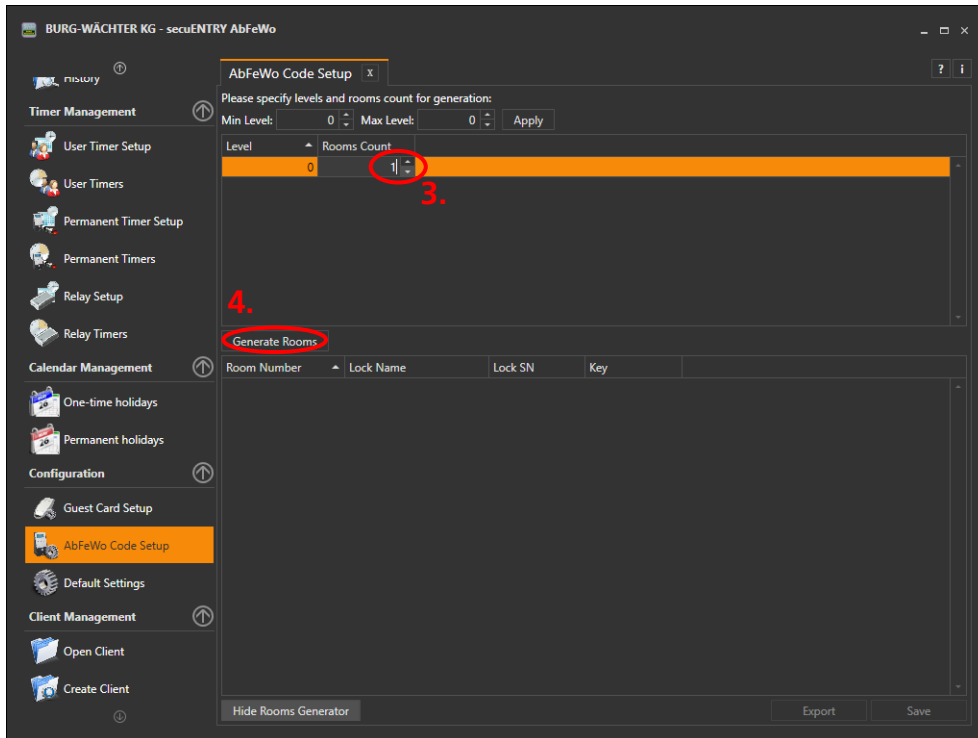
This example assumes that the property is a holiday home on the ground level, so no level is created.

First determine the number of levels **1** and confirm your entry via **2**.



**Fig. 18: AbFeWo Code Setup, define the number of levels**

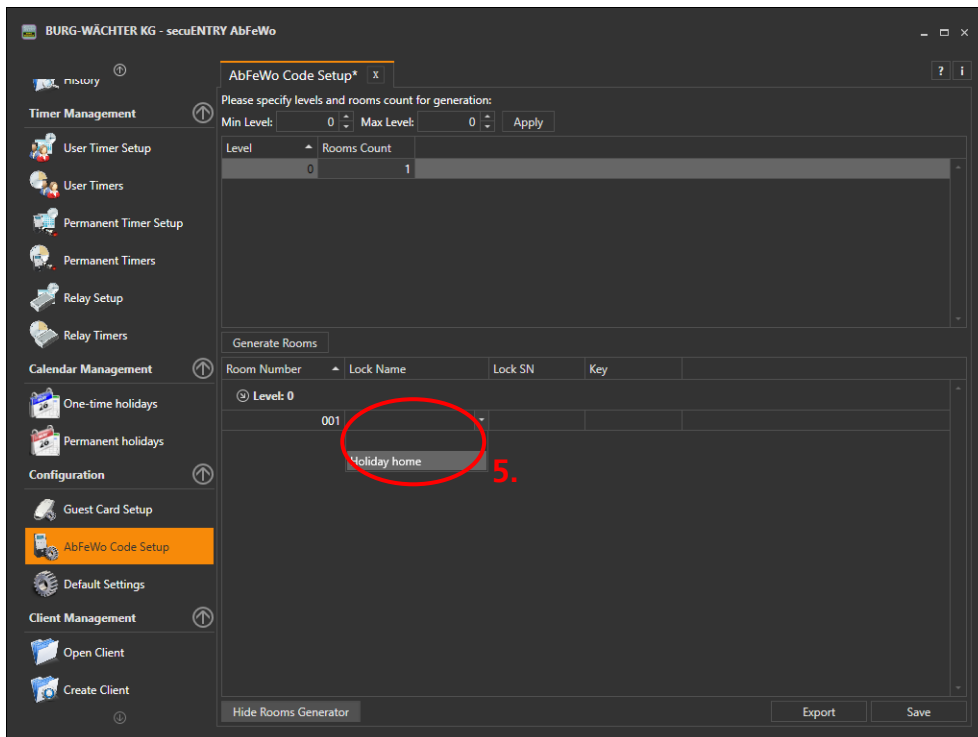
Levels are listed according to your specifications. Initially only one room is assumed for each level, so adjust the number of rooms as required in field **3**. Once the number of rooms has been defined for all levels confirm the data by clicking on button **4**.



**Fig. 19: AbFeWo Code Setup, define the number of rooms**

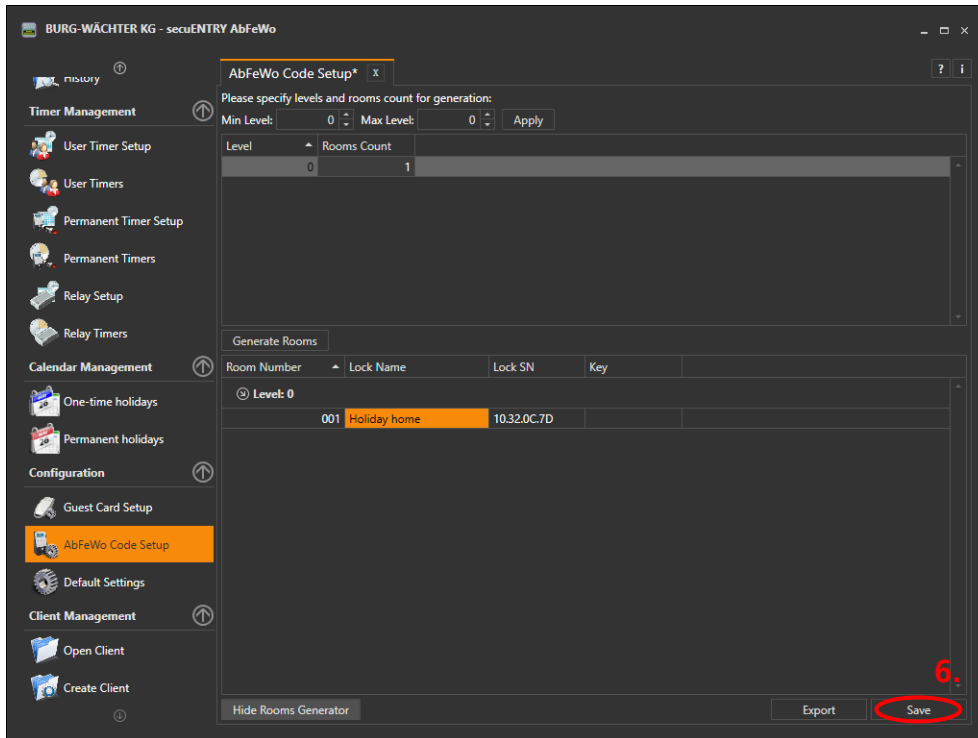
Note: The number of levels and rooms can be changed at a later time, but all entries made until this time will be lost.

The respective locks must now be allocated to the rooms. In this example, there is only one "Holiday home" lock and the door mode is "Room door". Consequently only one lock is offered or can be selected in the lock name column **5**.



**Fig. 20: AbFeWo Code Setup, drop-down menu for lock allocation**

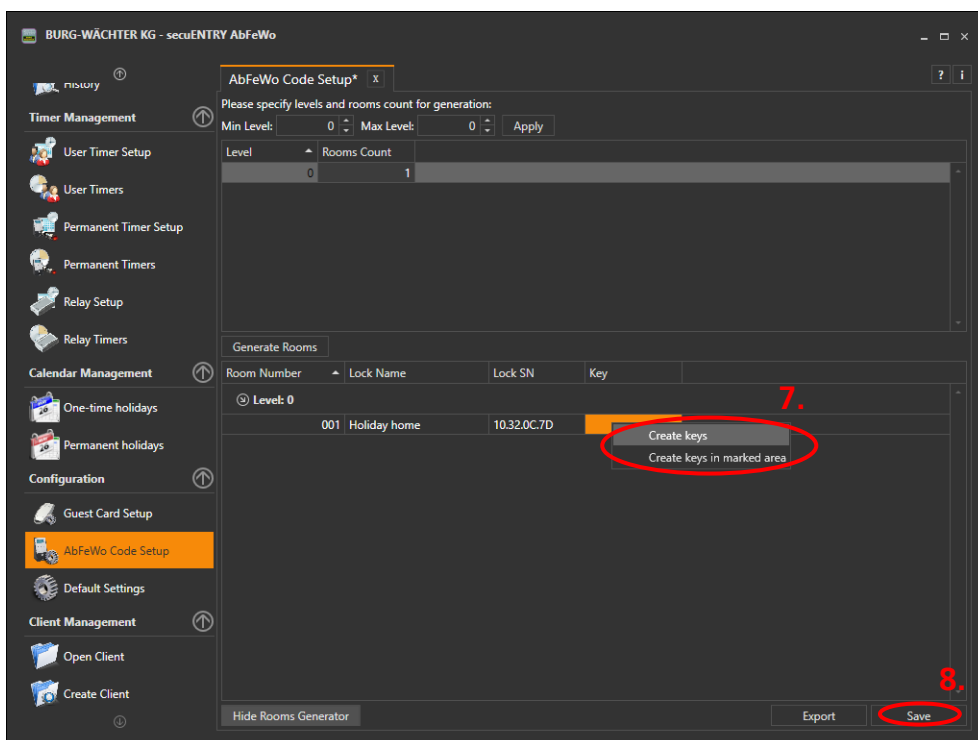
All rooms are allocated their respective locks in this way. Save these entries **6**.



**Fig. 21: AbFeWo Code Setup**

Keys must now be generated for the rooms. The keys only represent initialisation codes, this means that they are not authorised to open the lock. Two options can be selected by right-clicking in the respective field **7**. All codes can be generated at the same time or codes only generated for marked locks, for instance if they were added at a later time. Finally save the entries **8**.

Note: If a lock is exchanged or a new lock is added a new key must be manually generated for the lock.



**Fig. 22: AbFeWo Code Setup, generate keys**



Note: These keys have not yet been assigned to the respective locks or stored in the system. This data must first be exported **9** to enable this data set to be used for the AbFeWo Software.

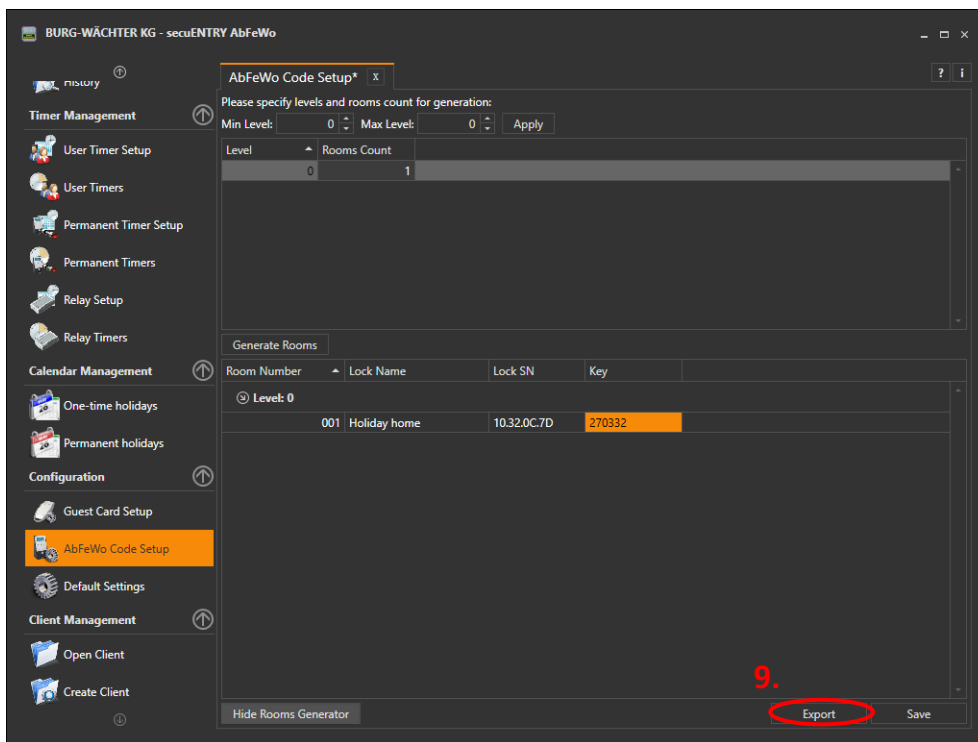


Fig. 23: AbFeWo Code Setup, export data

You can now specify the location and name under which the created .sqlite file should be saved, e.g. "AbFeWo.sqlite". Confirm by clicking on button **10**.

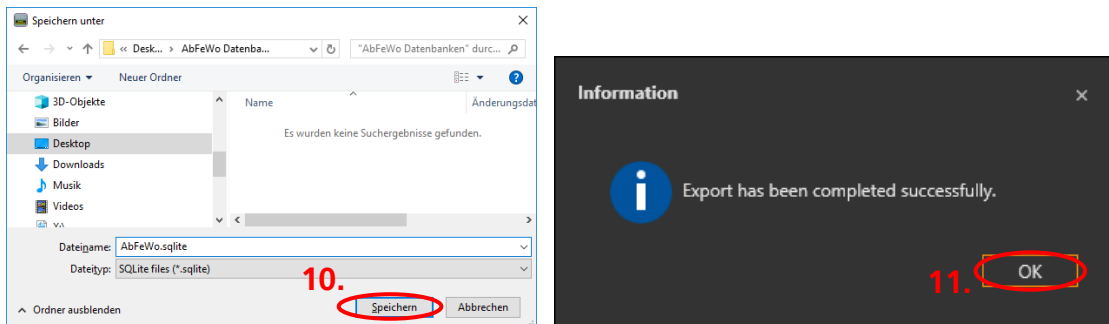


Fig. 24: AbFeWo Code Setup, export data

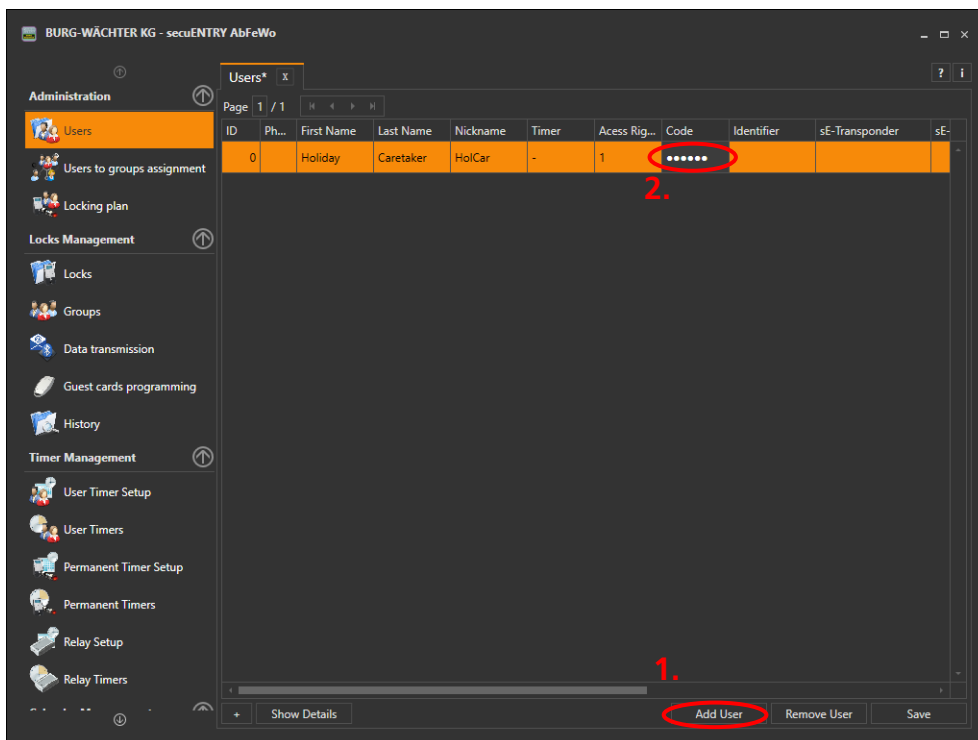
### 3.4 Administration

In the *secuENTRY PRO* software, users can be created and opening media can be stored, such as PIN code, finger scan or passive transponder.

Once again, only the settings that are important for the holiday accommodation locking system are dealt with here. Details can also be found in the video instructions.

### 3.4.1 User

The respective user data can be created or edited under the *Users* category.



**Fig. 25: User administration**

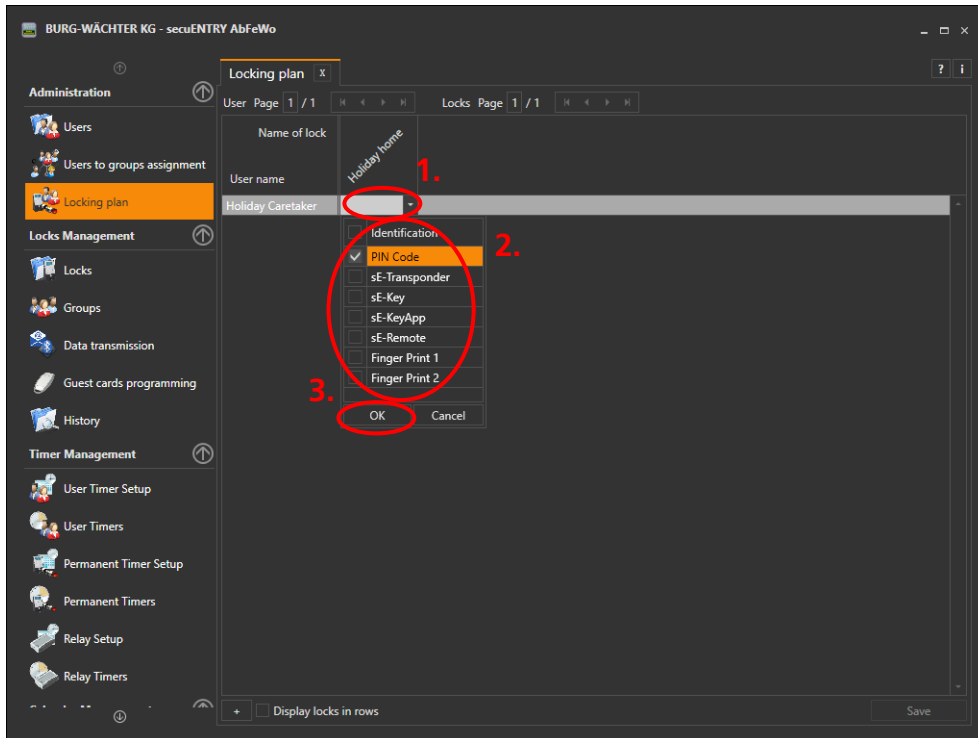
Create a new user **1**. Many of the settings possible here can be changed directly in the user's line by selecting the appropriate field. Not only can users be created and configured in the user administration, but it is also possible, for example, to define which rights, opening media or codes are to be allocated to a user.

In this example, a user called "Holiday Caretaker" is created by entering a first and last name in the respective field. A pin code **2** is entered as the opening medium. For security reasons the pin codes displayed are not stored in plain text. Selecting with the mouse button reveals the respective code.

For example, if a secuENTRY EKey is to be stored for the user, right click in the respective field to open the submenu. In the case of manual registration, the SN and the KEY code must be entered and confirmed in a new field in accordance with the QR code slip enclosed with the EKey; this data is automatically recorded when the QR code is scanned in.

**Note. When creating user data, please only use letters, numbers and characters that also appear on the lock keypad and no umlauts or special characters.**

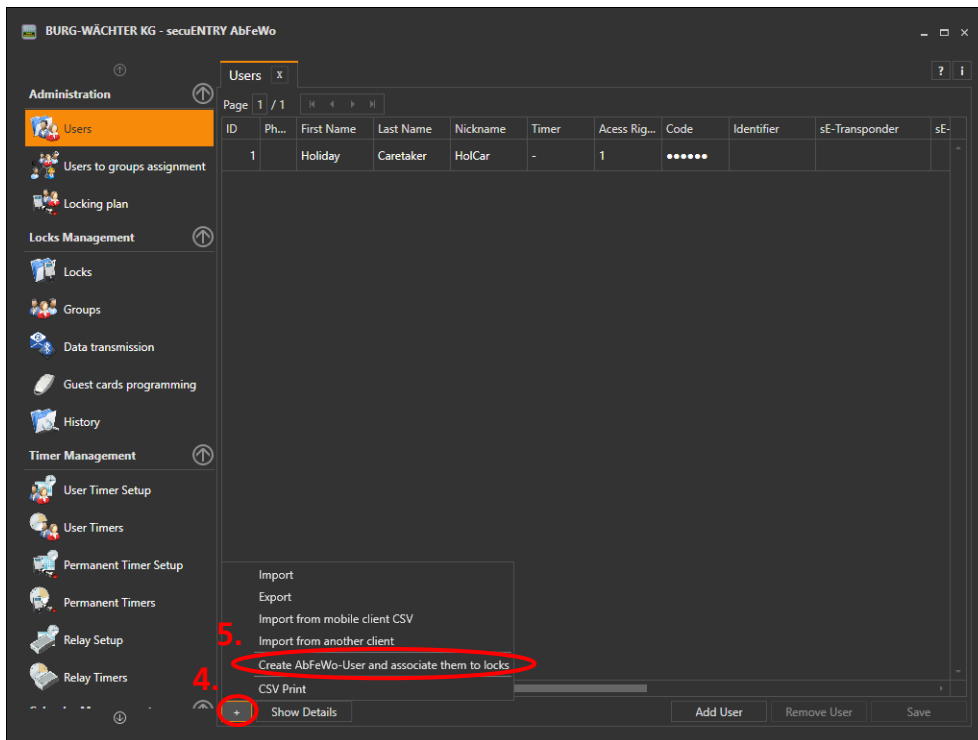
The created users and locks are automatically stored in the locking plan under the category Administration. Here, the opening medium for the individual locks can be assigned to the respective user by clicking on the corresponding field **1**. In this example Holiday Caretaker can open the holiday home with the pin code assigned under *User*.



**Fig. 26: Locking plan, allocation of opening medium**

If the selected opening medium cannot be allocated an error message is displayed. Adjust your entries accordingly or add the desired opening medium to the *User* menu.

To enable user codes to be generated for guest cards in the *User* menu first click on button **4** and then select the function "Create AbFeWo user and associate them to locks" **5**.



**Fig. 27: User administration, perform automatic Create AbFeWo user and associate them to locks**

The system then automatically creates a user with the name "Key", which has saved the key generated in the menu *AbFeWo Code Setup* as the opening medium. The key becomes visible when the mouse pointer is moved over the key. Because in this example only the lock "Holiday home" was created and a key was generated for this lock, in this case only another "KEY user" is added to the list. Save this status by clicking on **6**.

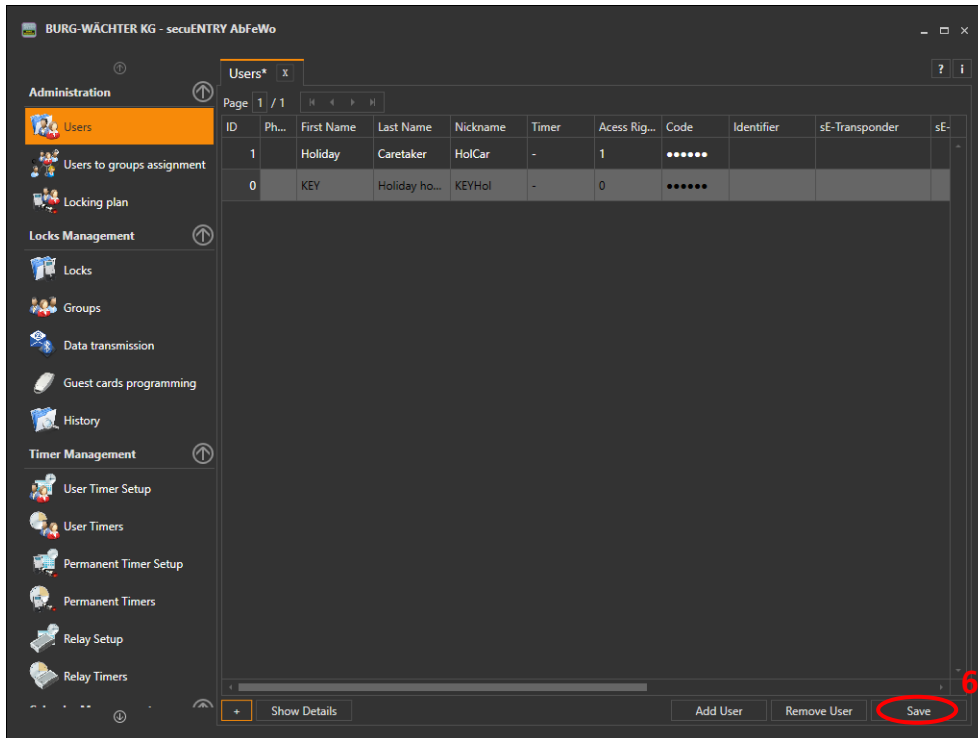
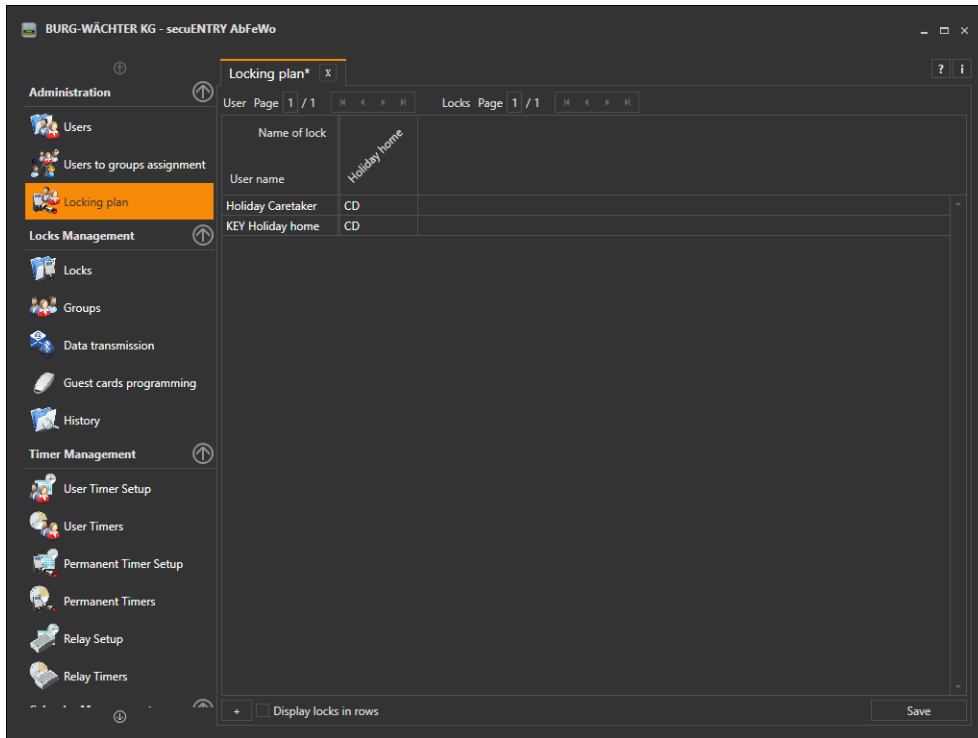


Fig. 28: User administration, automatically created AbFeWo users Keys

**Attention: The "Create AbFeWo user and associate them to locks" function can only be used once during the initial setup.** If new keys are generated because a lock was exchanged or added, this key must be manually updated or entered for the respective user. The keys under *User* settings are not updated automatically. Using the function a second time creates a second User key and the other functions can no longer run correctly.

At the same time this user or code is automatically allocated to the respective locks or rooms in the locking plan. This does not apply to optional entrances. Whether or not guest codes created at a later date are also to be authorized for these optional entrances must be specified manually. If a guest is to be authorized to open the main entrance to the building as well as the door to their holiday apartment this must be set up in this menu. To do this select "Pincode" and confirm in the respective field.



**Fig. 29: Locking plan, assignment of the AbFeWo user keys to the respective locks or rooms (Without manual assignment to the optional entrances)**

This data must now be transferred to the respective locks. In order to do this according to the chapter *Data transmission*, the locks must be initialized via the setup software as room door or optional entrance.

### 3.5 Data transmission

All communication between the software and the transmission media is made in the menu item **Data transmission**.

A distinction is made between full programming and delta programming. With full programming, all of the data relevant to a particular lock is transmitted to the database. With delta programming only that data which is different to the data already available for the lock is transmitted to the database. This reduces the time needed for data transmission.

**Attention: For successful delta programming the complete data transmission of the created delta data records is absolutely necessary.**

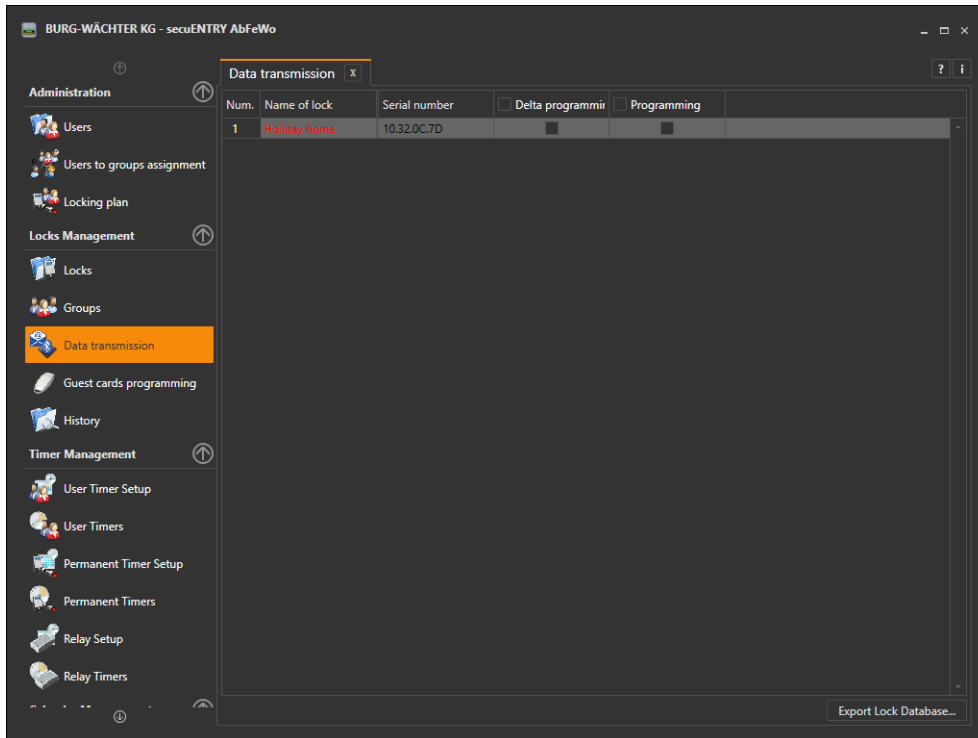
To delete a user's finger print during delta programming proceed as follows:

- Delete assignment of user to lock
- Update lock via delta programming by selecting the corresponding lock by ticking the box and then pressing "Export Lock Database"
- Deleting the fingerprint in the user menu

The administrator code can also be changed the here.

**The administrator code must be entered for all data transmission functions. This is preset to 123456 at the factory for the units *secuENTRY FINGERPRINT* and *secuENTRY PINCODE*. The units *secuENTRY BASIC* have the administrator code on the note with the QR-code.**

After opening the client, all units stored in the menu **Lock settings** appear under Data transmission. For a better overview, all units that are not current are marked in red.



**Fig. 30: Data transmission**

The software automatically checks whether the number of selected users with the corresponding opening medium for the respective lock is permissible. If the number of users for the maximum number of users per lock has been exceeded, an error message is issued and the data can no longer be transferred. In this case the number must be corrected in the **User** menu.

**Attention: Performing a data transmission completely overwrites the existing data. Changes that have been manually programmed into the lock will be overwritten!**

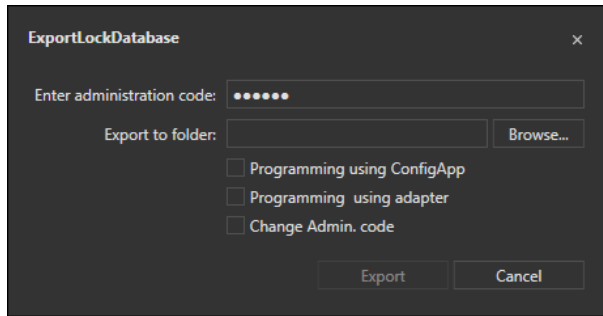
**If the History is not read during programming the events recorded up to the time of reprogramming will no longer be available.**

### 3.5.1 Data transmission

Proceed as follows to transfer the data:

- For the respective lock, select whether you want to carry out full programming or delta programming by ticking the appropriate box.
- Select **Export lock dataset**  
After selecting whether you want to program only the "selected lock" or "all tested locks", the following selection window appears:





**Fig. 31: Export database**

The administrator code defined in the default settings under Administration is preset. To program a new lock first delete the stored administrator code and enter the code for the particular lock, otherwise the data will be transferred but not taken over by the lock. The lock administrator code is factory set to 123456 for the units *secuENTRY FINGERPRINT* and *secuENTRY PINCODE*. The units *secuENTRY BASIC* have the administrator code provided on the note with the QR code.

When programming a new lock for the first time tick the Change Admin Code box to change the lock's administrator code, for example to the code that you have stored under the Default settings.

- Select a folder in which the data is to be saved
- Now select how the data should be transferred:
  - With the BURG-WÄCHTER KeyApp
  - With the USB adapter of the software

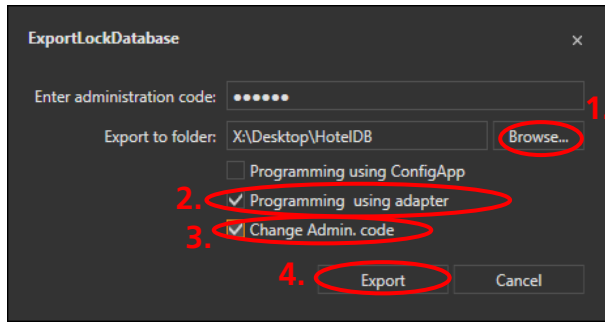
### 3.5.1.1 Transmission via BURG WÄCHTER KeyApp

- Select **Program via KeyApp** and tick **Change Admin. Code** when programming a new lock for the first time as described above.
- Select **Export**.  
When programming a new lock for the first time a new administrator code must first be defined. The procedure is described in the video tutorial already mentioned.  
The data is then stored in a zip file in the specified export folder or attached to an e-mail for sending to the mobile device.
- Open the sent attachment with the KeyApp on your Smart Device.  
Further information can be found in the KeyApp manual
- Program the cylinder

### 3.5.1.2 Transfer via the USB adapter of the software

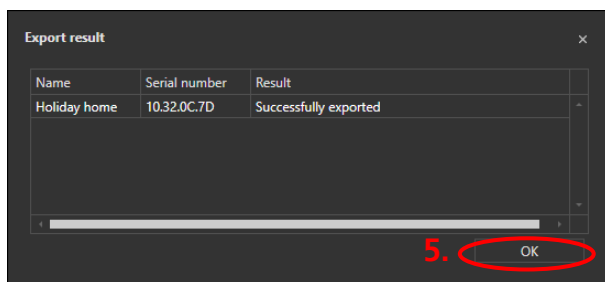
Please make sure that the units to be programmed are in close proximity to the USB adapter if you select this transmission method.

- Set the memory location 1 and select **Program using USB adapter 2**. Tick **Change Admin. Code 3** when programming a new lock for the first time as described above.
- Select **Export 4**.



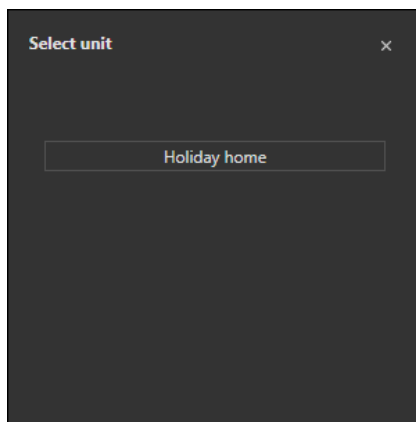
**Fig. 32: Export database**

- When programming a new lock for the first time first define a new administrator code; the procedure is described in the corresponding video tutorial.
- Acknowledge the next message **5**.



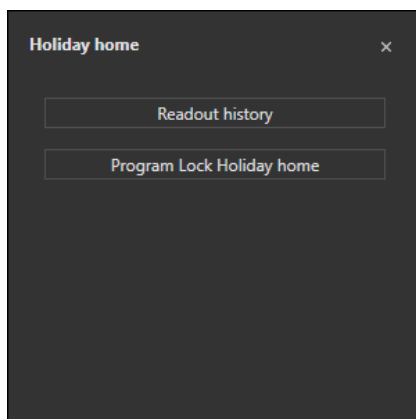
**Fig. 33: Export database**

- The following window then opens with the selection of the programmed locks



**Fig. 34: Unit selection**

- Select the lock to be programmed



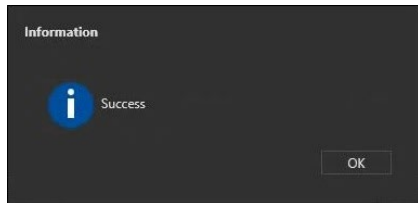
**Fig. 35: Unit selection**

Here you can

- read the history
- program the cylinder

- **Program the cylinder** by pressing ***Program Lock Lock designation.***

The transmission of the data starts, an info message is transmitted after completion.




**Fig. 36: Data transmission**

- Press **OK** to stop the transmission.
- If several locks are selected for programming close the current lock and select the other locks from the Selection menu. Proceed as described until all locks have been programmed.

You have successfully programmed your lock system for holiday accommodation, i.e. Optional entries and Room doors have been initialised and the respective keys have been programmed to the locks.

If you have changed the locks to an "optional entrance with 9-digit code" via the setup software, a 9-digit code must now be entered on the keypad to open them. Room doors can still be opened with the first six digits of this code; the last three digits are not required for opening room doors.

Note: The programmed six-digit standard codes, i.e. those codes which were entered manually under the menu *User* in the secuENTRY Software, are still valid according to the settings in the menu *Locking plan*. If an optional input has been set to nine digits, these standard codes must be completed with "000". As an example, a user "Caretaker" is created with the pin code 123456. If this user wants to open an optional input with nine digit code, 123456**000** has to be entered.

Alternatively, 123456 can also be entered and then confirmed with *Enter*, i.e. in the example 123456 .

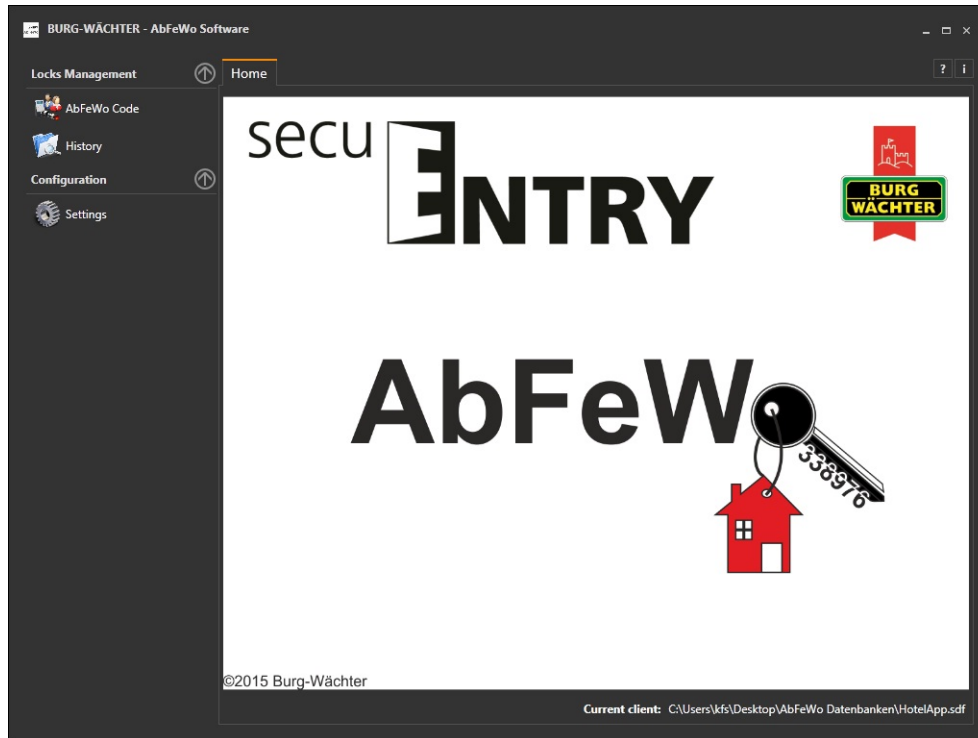
The secuENTRY AbFeWo software generates the actual guest codes for defined access times.

Close the secuENTRY AbFeWo Init Software and start the secuENTRY AbFeWo Software.

## 4 secuENTRY AbFeWo Software

The required guest codes are generated using the secuENTRY AbFeWo software.

The following window appears when the software is opened.



**Fig. 37: Start window secuENTRY PRO Software**

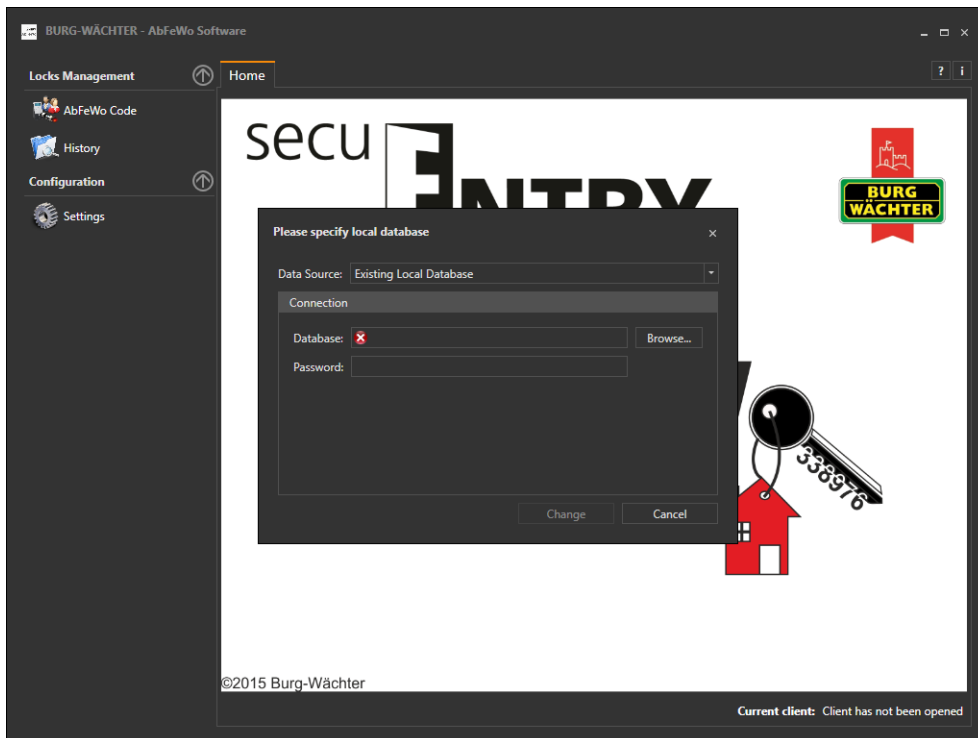
The database name or location is displayed in the main window. The two main categories are shown with their respective submenus on the left side of the main window.

- Lock management
  - AbFeWo Code
  - History
- Configuration
  - Settings

Use the arrow next to the categories to hide or show these subcategories. The subcategories are selected by a left click and the respective menu appears in the main window.

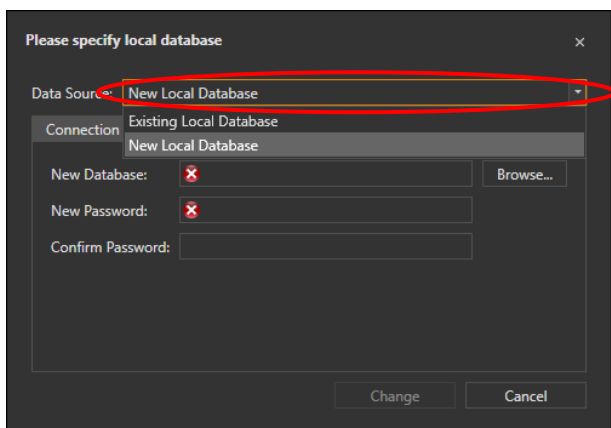
## 4.1 Configuration – Settings

During the initial start-up of the secuENTRY AbFeWo Software, a local database must be generated as a first step before you get to the main window.



**Fig. 38: Start window on opening for the first time**

You first have change over to “New local database” via the drop-down menu for the data source.

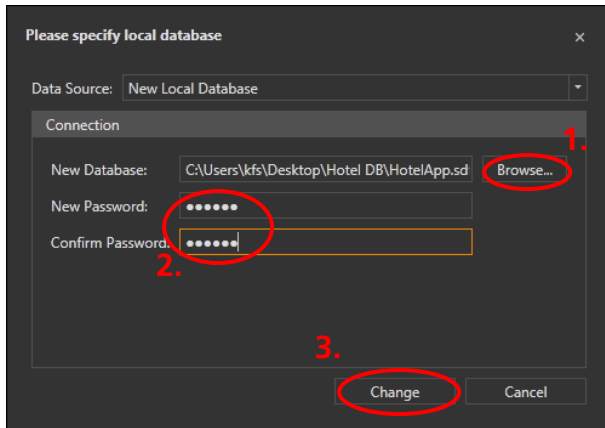


**Fig. 39: Creating a new local database**

Click on the **1** button to select the same folder for the database in which you have saved the exported database, the AbFeWo.sqlite file, from the secuENTRY AbFeWo Init software. The database HotelApp.sdf is created automatically.

Enter a password twice in the fields **2** then confirm the entries to create a new local database **3**.

Note: A copy of this database or folder should be saved in a different memory location as backup.

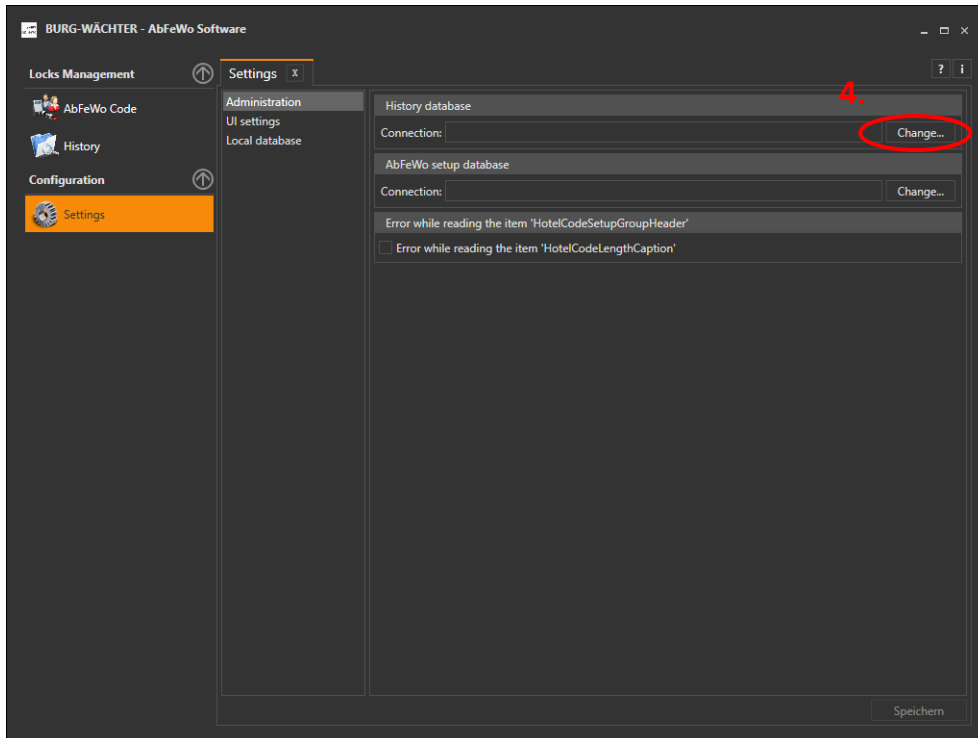


**Fig. 40: Creating a new local database**

As the next step, a history database must now be stored.

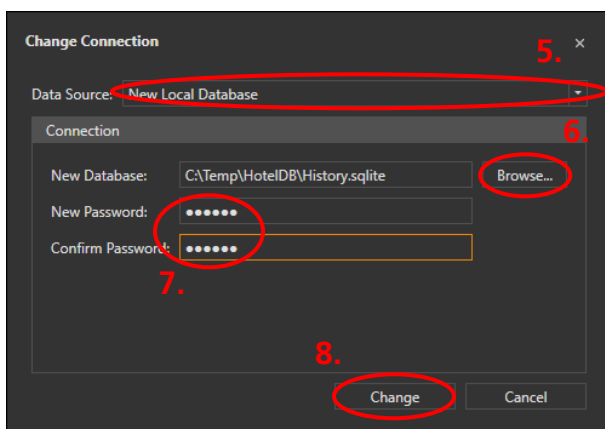
Create a new local database to **4** for this in the settings menu under Administration.





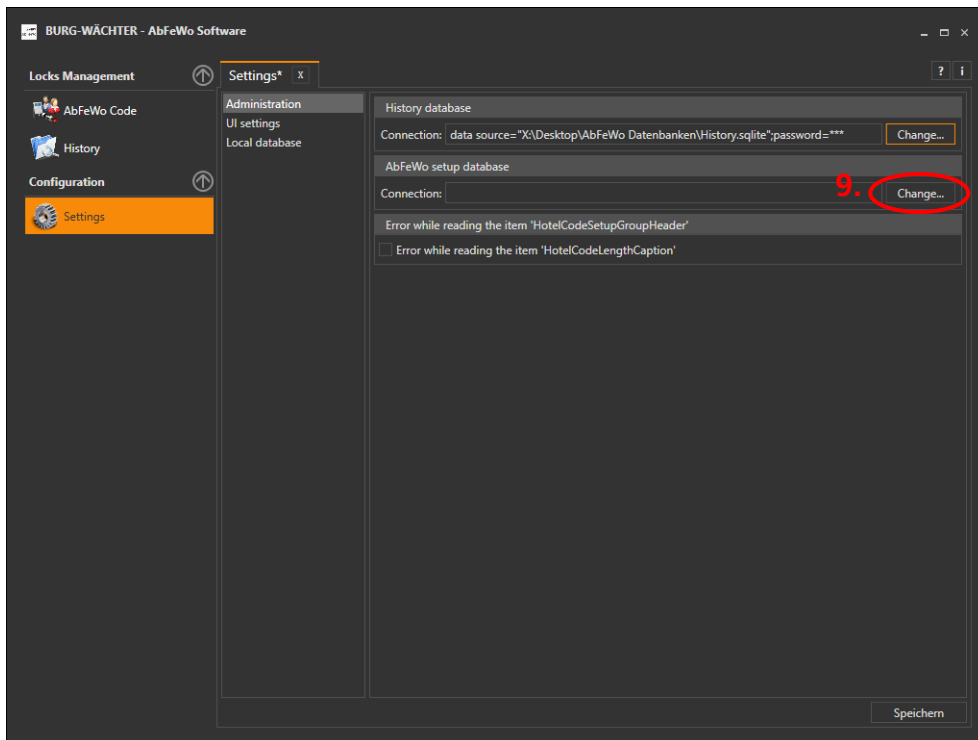
**Fig. 41: Create a history database**

Choose the same path **6** in which the database has already been stored. Re-enter a password twice here at **7** and confirm your entries **8**.



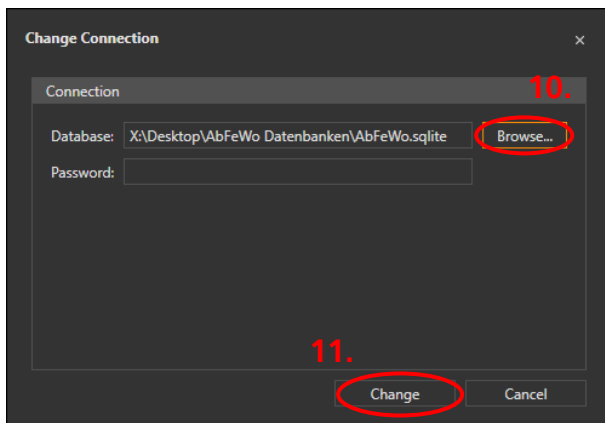
**Fig. 42: Create a history database**

The next step is to integrate the AbFeWo.sqlite file, which was exported via the secuENTRY AbFeWo Init software, into the AbFeWo software. Select the AbFeWo.sqlite file under AbFeWo Setup Database **9**.



**Fig. 43: Integrating the AbFeWo setup database**

**A password is not necessary;** this field can remain empty.



**Fig. 44: Integrating the AbFeWo setup database**

If you have included locks as optional entrances with a nine-digit code in the setup software, you must also select "Create nine-digit code" in the AbFeWo software **12**. This means that all optional entrances can only be opened with a nine-digit code. The room doors remain unchanged and only a six-digit code is required.

Save these settings **13**.

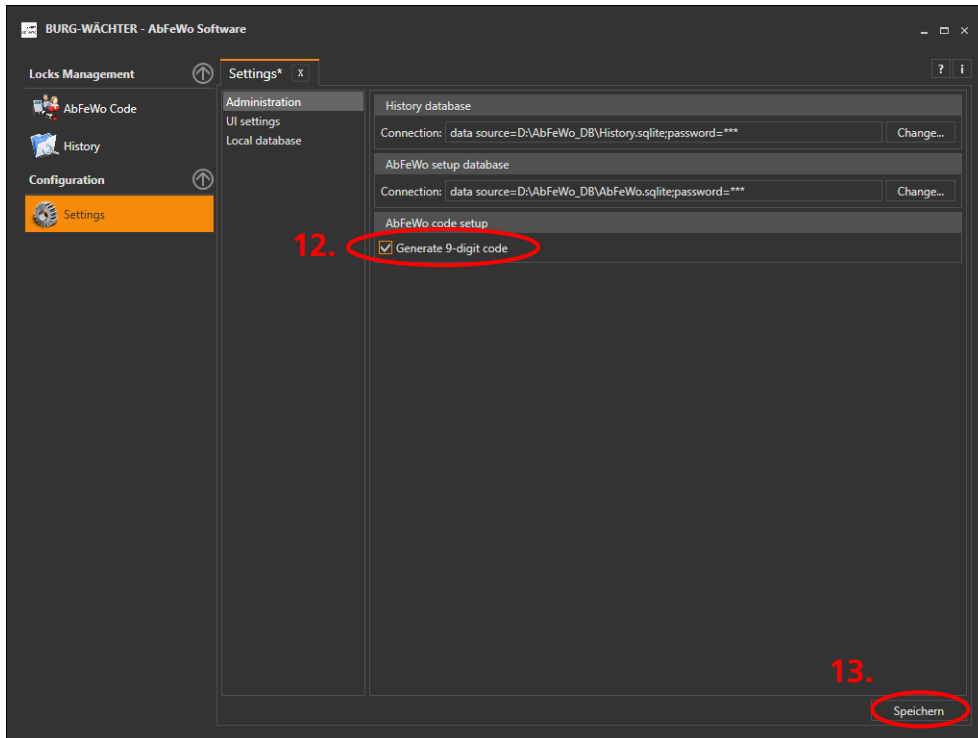


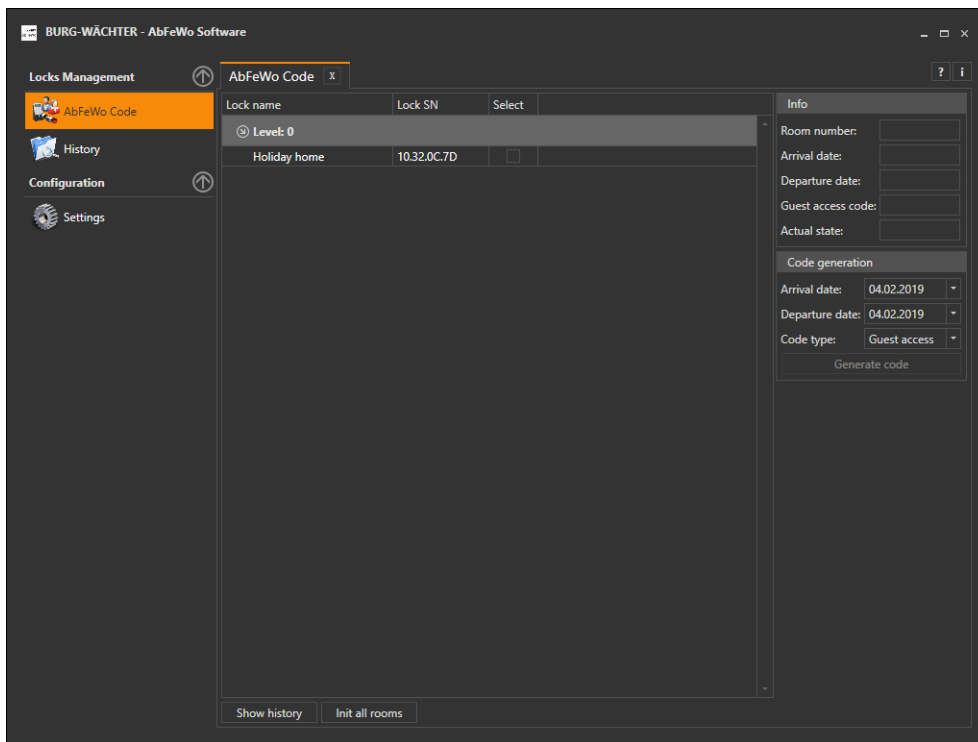
Fig. 45: Guest code setup

## 4.2 Lock management

You can find information to the individual locks and the option of generating guest codes under the section Lock management.

### 4.2.1 AbFeWo Code

Select the AbFeWo Code menu under Lock management.



**Fig. 46: AbFeWo Code**

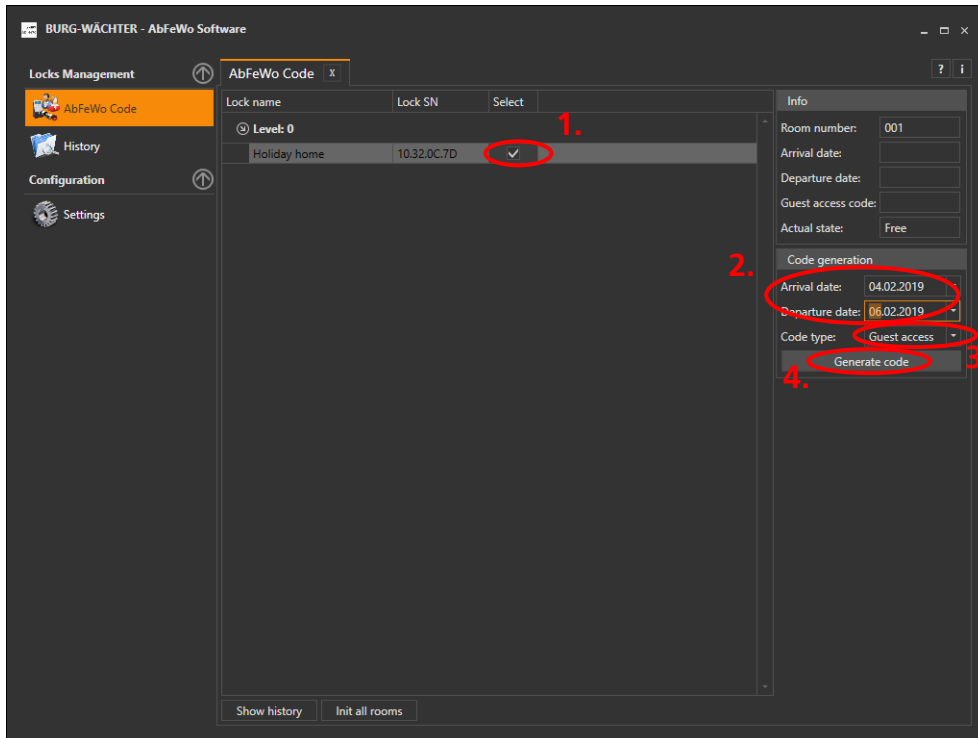
In accordance with the data you exported from the secuENTRY AbFeWo Init software, all saved locks with the door mode "Room door" are listed.

A holiday code or guest code can now be generated for these rooms. Select the respective lock or room from **1**. The period of validity of the guest code can now be set, i.e. enter the guest's day of arrival and departure **2**.

Note: We recommend that guest codes are only created on check-in.

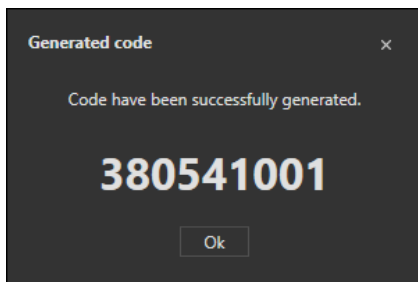
This ensures that none of the generated codes are skipped. The date that the code is created is important. As an example, a code is generated for guest A from 10.08.2018 to 11.08.2018 (advance booking) and then a code for guest B from 08.08.2018 to 09.08.2018. If guest B uses the code to open a door, guest A's code automatically becomes invalid, because the creation date for code B is later than that of code A (code A is therefore considered "out of date").

The maximum booking period is 29 nights. Guest access must be set under Code type **3**.



**Fig. 47: AbFeWo Code room 008**

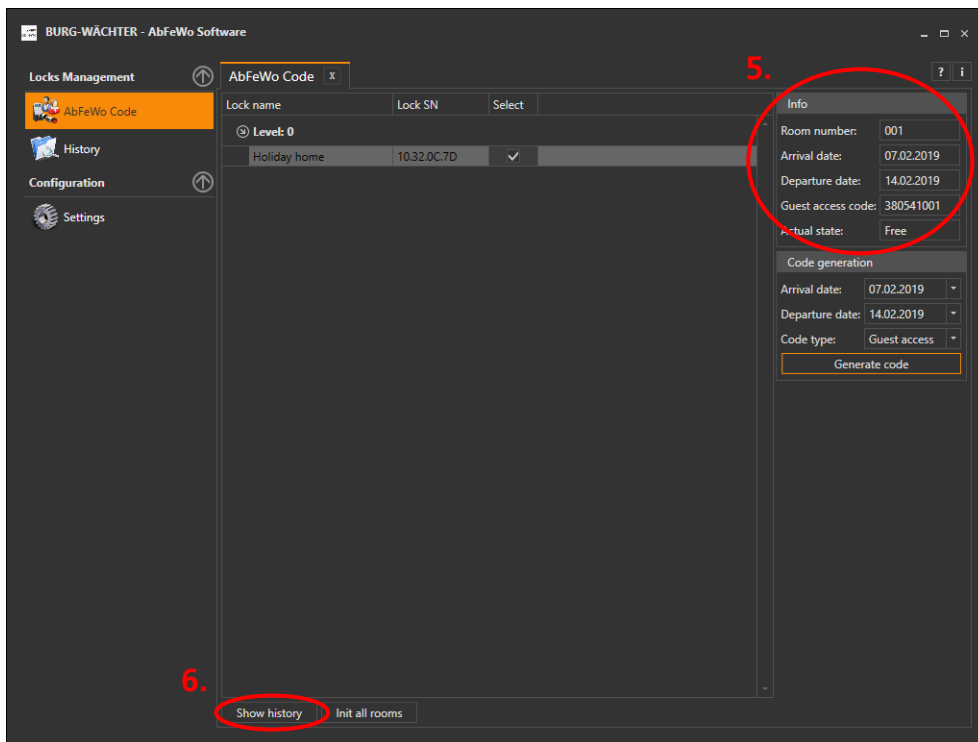
Generate the code **4**. The generated nine-digit code appears.



**Fig. 48: Example of a generated code**

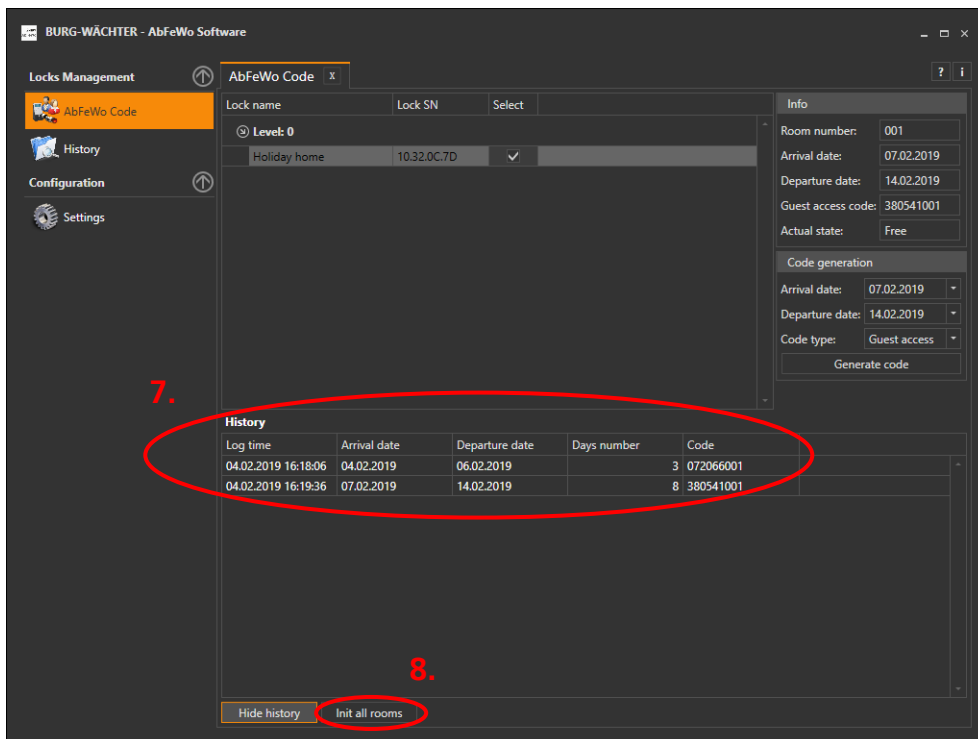
Depending on the settings in the secuENTRY AbFeWo Init Software, the guest can open the holiday apartment and community doors with this code during the selected period. The complete nine-digit code is required for the community doors or optional entrances, while the first six digits are sufficient for a room door.

This newly generated code is now also entered in the info area **5**.  
 Display histories **6** allows further information about the lock to be viewed.



**Fig. 49: Display history**

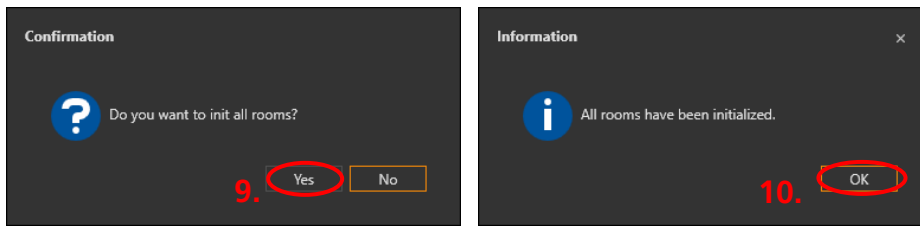
Here it can be seen exactly **7** when a code was generated for this lock and which code was filed for it.



**Fig. 50: History display**

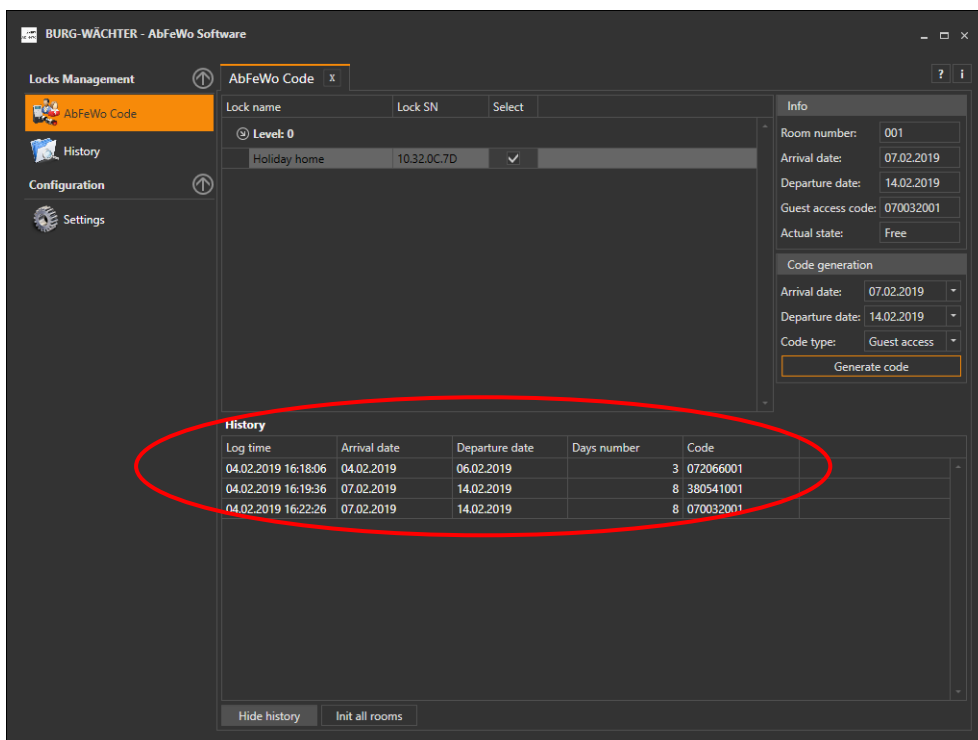
In the example, a code was generated for the holiday home. In this example all rooms

are initialised **8**, i.e. all counters are reset.



**Fig. 51: Initialise all rooms**

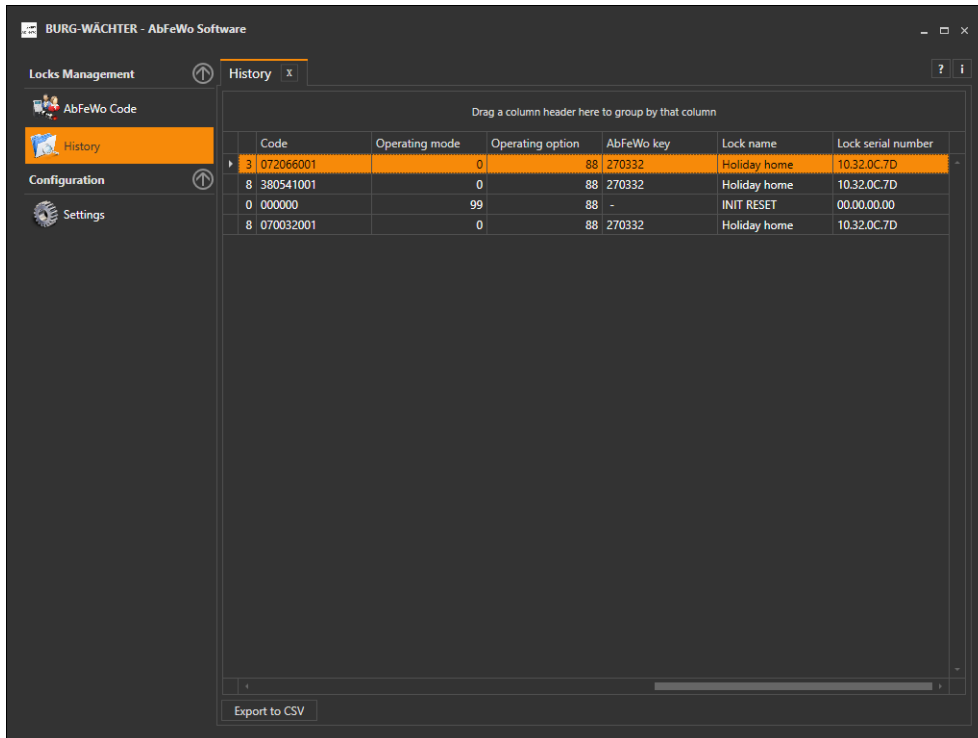
Therefore if a new code is generated after initialisation of the rooms, the same code is assigned. If a new code is generated without previously initialising the lock it will of course differ from the previous code.



**Fig. 52: History display**

## 4.2.2 History

All processes of the secuENTRY AbFeWo Software that affect the locks are recorded under History. Which user was generated through which type of guest code, which code was assigned for which period and when the room codes were reset.



**Fig. 53: History**

Congratulations, you have now completed all the necessary steps to create a locking system for holiday accommodation.



## Imprint

The copyright for these operating instructions are held exclusively by BURG-WÄCHTER KG.

Any reproduction, even into digital storage media requires the written consent of BURG-WÄCHTER KG. Reprinting, even excerpts, is forbidden.

© Copyright by **BURG-WÄCHTER KG, Wetter (Germany)**

### **BURG-WÄCHTER KG**

Altenhofer Weg 15  
58300 Wetter  
Germany

[info@burg.biz](mailto:info@burg.biz)  
[www.burg.biz](http://www.burg.biz)

Irrtum und Änderungen vorbehalten. – Mistakes and changes reserved.