

SNCA-MK-4531-E

Water proof junction box
for cameras IP66

PRODUCT DESCRIPTION

► Application:

Adapter / connection box for indoor and outdoor cameras.

► Technical specifications:

Type	Adapter / junction box
Installation site	Indoor / outdoor
Installation option	Ceiling and wall mounting
Suitable for	Please see accessory selection
Pipe thread	G3/4"
Cable management	Yes
Classification	IP-66
Housing material	Metal
Colour	White
Loading capacity	3,0 kg
Dimensions ØxH (mm)	124 x 41
Weight	0,35 kg
Items included in delivery	4x M4x10,3x ST4,2x25,anchor,mounting sticker
Specials	Without suitable power supply

► Note:

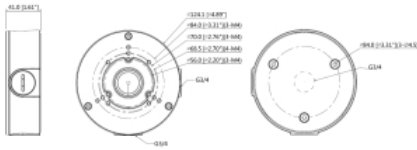
Without suitable power supply



BURG-GUARD GmbH
Wormgermühle, 58540 Meinerzhagen, Germany
Tel.: +49 2358 905 490, Fax: +49 2358 905 499
BURG-GUARD@burg.biz, www.burg-guard.com



Weitere Bilder:



Alle Angaben in mm (inch), errors und technische Änderungen vorbehalten
All dimensions are in mm (inch), errors and omissions excluded

► Recommended Accessories

SNCA-CM-4670	Corner Mount Adapter for see recommended accessories
SNCA-PM-4661	Mastadapter inkl. Spannbänder von 80 bis 130 mm
BURGCAM-BULLET-304	WLAN 3MP IR bullet camera for indoor and outdoor 2,8mm fix lens, 12VDC, IP-66
SNCA-PM-4660	Pole Mount adapter up to 127 mm and SNCA-JB-4640 and SNCA-WM-4642 (SNC-211RSIA)
SWC-230RBIF	Thermal-Mini-Hybrid-Bullet-Camera Lens Therma: 1mm, Visual: 4mm, IP 66, IP 66
TR-A01-IN	Uniview plastic Waterproof joint TR-UP06-A-IN, TRJB07-IN, TR-JB07-A-IN