



# Parcel box eBoxx EASY+



SECURITY  
SINCE 1920

CONVENIENT, SAFE, UNIVERSAL

# The parcel box for all purposes!

# New!



# Not at home? No problem!

**THE eBOXX EASY+ PARCEL BOX WILL RECEIVE YOUR PARCELS EVEN IF YOU ARE NOT AT HOME. SEVEN DAYS A WEEK, 24 HOURS A DAY.**

**Are you eagerly awaiting your delivery? Unfortunately, you are not at home when the parcel service calls.** Once again, instead of the new shoes, all you have in your hands is the collection receipt. That doesn't need to be the case: The parcel box from BURG-WÄCHTER is the solution! 24 hours a day, seven days a week.

It doesn't matter who is delivering, wherever DHL, DPD, Hermes or any other kind of delivery. It could be the pharmacy, a drinks supplier or the baker around the corner, you can be sure that your orders or even your Sunday bread rolls will be delivered. **Regardless of whether it's a single-family cottage, a semi-detached house or a rented flat – the eBoxx EASY+ is capable of meeting all requirements.**



## WHEN THERE'S MORE

**Some days you receive only one parcel, other days two or three..** All of these can be safely stored in the eBoxx EASY+. The "multiple delivery" function makes sure of that. This means: if a delivery is placed in the parcel box and it is locked, you can allow other suppliers to open the eBoxx EASY+ again with their personal codes and deliver the subsequent parcels.



# 1,2,3

Parcels

Receive several parcels from different delivery services with the eBoxx EASY+. You assign a personal code to each service provider to ensure secure opening.

From one to 11,750,000.

Why the eBoxx EASY+ parcel box adds up to a great solution for everyone

up to

# 50

kg

The eBoxx EASY+ is suitable for heavy parcels or drinks deliveries. The GV model, for example, offers a load capacity of up to 50 kilograms, depending on the type of mounting.

# ∞

number of codes

There is no limit to the number of codes you can assign to your eBoxx EASY+. In addition to ten permanent delivery codes, there are any number of one-time codes that automatically become invalid after use.

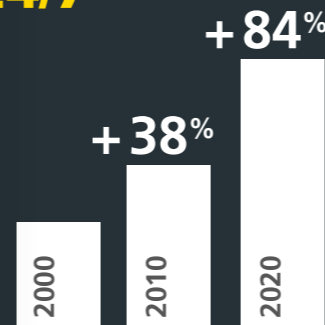
# +120%

Meal-kits

The meal-kit business is booming. The market leader recorded a total of 19.49 million orders (equivalent to 212,000 per day) in the third quarter of 2020, an increase of 120 per cent compared to the same quarter last year.

# 11,750,000

Packages per day were delivered on average in Germany in 2020.



The number of parcel deliveries in Germany is accelerating. There was an increase of around 38 percent between 2000 and 2010, this figure has grown to 84 percent between 2010 and 2020 – and it's still growing!

# 94%

Online shoppers

People who are active on the internet also shop online. In 2019, 94 percent of German internet users aged 16 and over shopped online at least once a year.

\* The maximum load may vary depending on the type of installation and wall condition. The information is only valid for professional installation.

An overview of your parcel box

# eBoxx EASY+

EASY TO USE, HIGH-QUALITY MANUFACTURING. THE eBOXx EASY+ PARCEL BOX PROVIDES THE LATEST TECHNOLOGY FOR THE DELIVERY OF YOUR PARCELS. YOU WILL NEVER HAVE TO QUEUE AT THE PARCEL SHOP AGAIN.

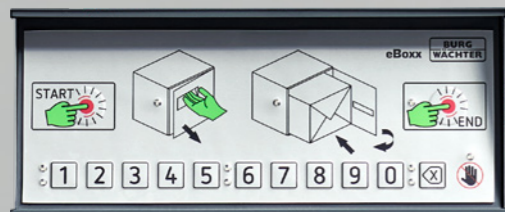
Available with optional letterbox attachment

**The ideal combination:** The eBoxx EASY+ can be equipped with either one or two letterboxes. Meaning you no longer need a separate letterbox.

## Operation

**Simple and easy to use:**

Just four steps are needed to deposit the parcel in the eBoxx EASY+ and to securely close it again.



Wall, floor, stand and system mounting

The parcel box can be installed wherever is convenient for you. It can be mounted on the house wall, on the floor or free-standing on legs. Whatever suits your living environment best. You can also combine several eBoxxes with one another.



Large storage compartment – suitable for several parcels.



The eBoxx EASY+ is available in two sizes with a capacity of either 98 or 197 litres. This allows you to receive larger parcels or several deliveries from different delivery companies.



No power connection necessary!

**Insert the batteries and off you go!**

There is no need for a power connection and the associated time-consuming and expensive assembly work to use the eBoxx EASY+. The electronics are supplied with power via the batteries included in the delivery.



Convenient to control via the app

Assign delivery codes, view the battery level or check whether a parcel has been deposited. The eBoxx EASY+ can be operated conveniently and intuitively with the free secuENTRY KeyApp for iOS and Android.

## Material

**A parcel box should last for many years.** For this reason, the eBoxx EASY+ is made from galvanised steel and is well protected from the weather thanks to its corrosion-resistant locking mechanism.

**A bonus:** The steel components are laser-welded and consequently ensure the parcel box's optimal stability.



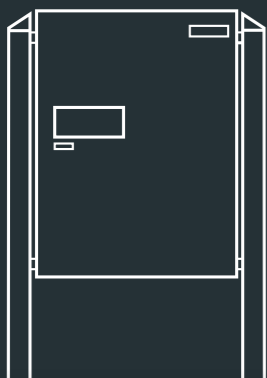
Contactless delivery

# Intelligently combined

**NOT ONLY FOR SINGLE-FAMILY HOUSES: THE eBOXX EASY+ ADAPTS TO YOUR REQUIREMENTS. THE EBOXX EASY+ CAN BE USED AS A SYSTEM WITH SEVERAL PARCEL BOXES AND CAN BE COMBINED WITH MATCHING LETTERBOXES FOR RESIDENTIAL ESTATES OR COMMERCIAL BUILDINGS.**



## The spacious

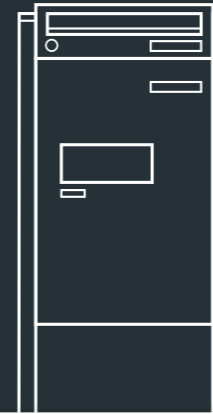


eBoxx EASY+ GV with Terzo posts: This large parcel box offers an interior volume of 197 litres.

**The large model (GV) of the eBoxx EASY+ provides a full 197 litres of interior space. This is equivalent to more than half the boot volume of a current VW Golf 8.** The GV parcel box has a maximum load\* of up to 50 kilograms, depending on how it is mounted. This allows your drinks supplier, for example, to deposit a standard crate of water with twelve bottles as well as two six-packs of 1.5-litre bottles.

\*The maximum load may vary depending on the type of installation and wall condition. The information is only valid for professional installation.

## The flexible



eBoxx EASY+ E with eBoxx letterbox A and stand Universal 150 eBoxx Ni (also available with two letterbox attachments)



Ideal for use in semi-detached houses and apartment buildings: the eBoxx EASY+ (model E) used as a system combined with the eBoxx letterbox A, Terzo post and Terzo foot.

**Do you often have to call on various neighbours in your building to collect your deliveries? Save yourself the time with the eBoxx EASY+.** For residential estates and apartment buildings, landlords or owners simply combine several parcel boxes as a system. This means that each party can receive their parcel directly – a major plus when it comes to living comfort.

**The eBoxx and letterbox A are the perfect combination for landlords and homeowners alike.** Parcels and normal letter post can be delivered securely in one system. For up to six parcel and letter boxes in a free-standing system with Terzo posts.



## The addition



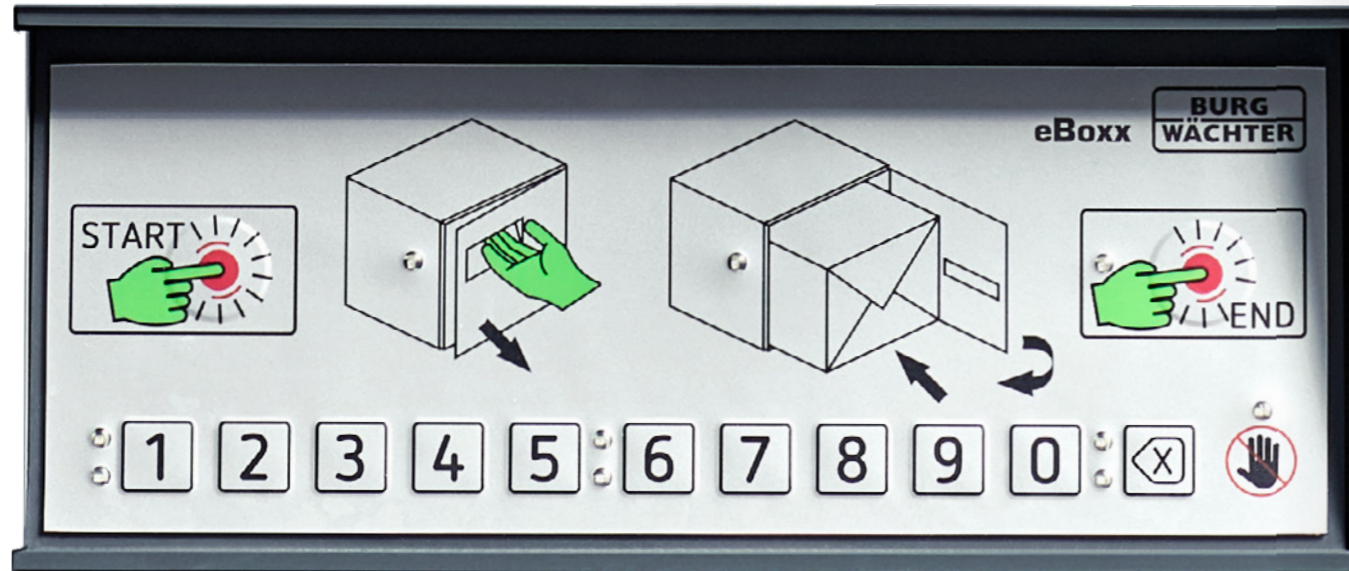
eBoxx letterbox A as a precision-fit attachment for the eBoxx EASY+ E.

**Two models, a multitude of possibilities.** Whether for a single-family house or a residential estate: The modern eBoxx EASY+ parcel boxes not only offer you a choice of size. The number of boxes is also flexible. Please visit our website for more information on parcel box systems.

Secure parcel delivery in just a few seconds

# Fast & intuitive

PARCEL SERVICES AND ALL OTHER DELIVERERS WILL ABSOLUTELY LOVE IT! AS THE DELIVERY PERSONNEL ONLY NEED A FEW SECONDS TO DEPOSIT YOUR PARCEL SECURELY THANKS TO THE INTUITIVE OPERATION OF YOUR eBOXX EASY+.



**Everything is easy – just like the name suggests!** Delivery personnel only need a few moments to deposit a delivery securely in your eBoxx EASY+ parcel box.

1. Press the **START** button
2. **Open parcel box**
3. **Deposit the delivery and close the parcel box**
4. Press the **END** button

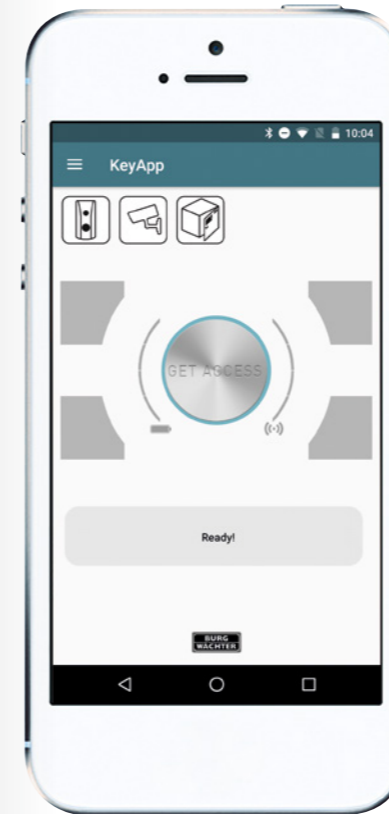
Your parcel is now safely stored!

It is not only parcel services that can use the eBoxx EASY+. The local baker, pharmacist or organic farmer from the neighbourhood can drop off their deliveries as well.

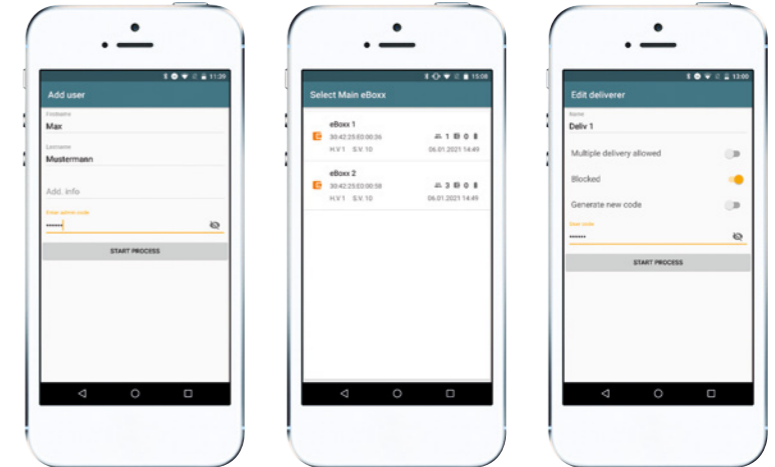
It is also very easy for you to use: simply open the parcel box with your personal user code and remove the parcel or several parcels in one go. **The intelligent "multiple delivery" function allows several deliveries to be deposited on the same day.** The individual delivery codes mean that only authorised persons have this option – safe is safe.

## 4 Steps

**Easy and safe operation.** The delivery steps are clearly explained to the delivery personnel in four images on the eBoxx EASY+ control panel.



The free secuENTRY KeyApp is available for Android and iOS. The relevant AppStore links can be found on our website [www.burg.biz/international/](http://www.burg.biz/international/) or via this QR code.



**ALL FROM ONE SOURCE – ASSIGN CODES. CHECK STATUS.**

OPERATING THE eBOXX EASY+ IS CHILD'S PLAY USING THE KEYAPP.

**Your parcel box is always at hand with the free secuENTRY KeyApp.** Using the smartphone app, you can assign delivery codes for parcel services or one-time codes for the Sunday rolls from the bakery. The codes can, of course, be changed or deleted at any time. You retain full

control over who is allowed to open your eBoxx EASY+ and have everything in hand at all times! The app also displays the battery level of the parcel box and whether a delivery has been deposited.



## Universal codes

**This is how the delivery personnel receive the code:** Whether it's a parcel company or an organic farmer, you decide which deliverers are allowed to deliver to your parcel box and whether the delivery code is valid permanently or only once. The links for submitting your delivery codes to the parcel services in Germany can be found on our website.

The parcel box "Made in Germany"

# High quality & built to last

STRONG. TOP QUALITY. DURABLE. THE eBOXX EASY+ HAS BEEN DESIGNED TO LAST FOR MANY YEARS. QUALITY "MADE IN GERMANY"



**01. High-quality manufacturing:** The eBoxx EASY+ is manufactured with the utmost precision. The eBoxx EASY+ is rendered even more robust due to laser welding and base stiffening. Of course, the letterbox top fits accurately on the parcel box. The letterbox is opened and closed with a corrosion-resistant cylinder lock.

**02. Soft door opening:** The parcel box and the letterbox operate particularly smoothly. The hinges guide the doors precisely, so that even after prolonged use, the doors still close accurately. An integrated rain drainage system protects parcels and mail from getting wet.

## 45 years of experience

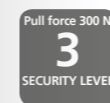
have been put into the eBoxx  
EASY+ parcel box.

BURG-WÄCHTER has been  
developing and producing high-  
quality letterboxes since 1975.

### Pull force

The eBoxx is well equipped against vandalism.

The parcel box provides extremely robust protection thanks to a pull force rating of security level 3 (30 kg) in accordance with TS 16819.



### Child safety lock

In case of emergency, the eBoxx has an emergency opening option from the inside as a child safety lock as well as a ventilation system.



### Break-in protection

A built-in lock reduces the risk of the parcel box being broken into. Guaranteed by the EN 13724 standard (security level 2).



### Weatherproof

The parcels are protected from wind and weather. The weather resistance was tested in a sprinkler test and confirmed according to TS 16819 (corrosion class 3).



Three options as required

# Easy to mount

**MOUNT THE EBOXX EASY+ EXACTLY AS YOU WISH! THE MODELS ARE PREPARED FOR WALL, FLOOR AND FREE STANDING MOUNTING EX WORKS.**



## Stand assembly

The eBoxx is a real eye-catcher when free-standing. The stands are either set in concrete or screwed to a concrete foundation.



E 635 ANT with letterbox attachment A 625 on Terzo posts



E 635 W on Universal 150 eBoxx Ni stands\*\*\*

\*\*\* Two Universal 150 eBoxx Ni stand sets are required for the GV 645 parcel box.

# Overview

Colour	EAN	Parcel box dimensions/weight	Parcel max. dimensions/load*
	40 03482...	in mm	in mm
<b>E 635 ANT / E 635 W</b>			
anthracite	41930 4		
white	41920 5		
<b>GV 645 ANT / GV 645 W</b>			
anthracite	41950 2		
white	41940 3		
<b>A 625 ANT / A 625 W **</b>			
anthracite	41970 0		
white	41960 1		

\* The maximum load may vary depending on the type of installation and wall condition. The information is only valid for professional installation.

\*\* Letter boxes according to DIN EN 13724:2013

**kg** Load of up to 50 kg\*  
 Even a large drink crate can fit in the eBoxx EASY+. Plus, of course, one or more large parcels.

**Further information:**  
 Instructions, installation aids and all dealers in your area can be found at: [www.burg.biz/international/](http://www.burg.biz/international/)

Recommended accessories:

# Accessories



## Universal 150 eBoxx Ni

### stainless steel

- suitable for all eBoxx models
- includes two stainless steel tubes with pre-drilled perforations
- secured from the inside onto the tubes, offering increased theft protection
- for embedding in concrete
- tubes can be shortened as required
- two stand sets are required for the GV 645 parcel box.
- incl. assembly set



Art.-No.	EAN	LxØ
	40 03482...	mm
UNIVERSAL 150 eBoxx NI	37801 4	1500x 32



## Terzo post

- tubes made of high quality powder coated aluminium
- for embedding in concrete
- two posts are required for mounting an eBoxx

## Terzo base

- optional for the Terzo posts
- enables mounting without concreting
- for surface mounting to a solid floor concrete.
- incl. fixing material and cover caps
- two bases are required for mounting an eBoxx

Art.-No.	Colour	EAN	Length
		40 03482...	mm
TERZO V11-170 W	white	38530 2	1540
TERZO V11-170 ANT	anthracite	38510 4	1540
TERZO base V11-F W	white	31000 7	1540
TERZO base V11-F ANT	anthracite	34420 0	1540



WE DELIVER SECURITY

SINCE 1920  
BURG-WÄCHTER





ALWAYS THE  
SAFE CHOICE!

**BURG-WÄCHTER KG**

Altenhofer Weg 15  
58300 Wetter  
Germany

**TELEPHONE**

+49 (0) 23 35 965 30

**FAX**

+49 (0) 23 35 965 390

**E-MAIL**

export@burg.biz

**SOCIAL MEDIA**



**BURG-WÄCHTER UK**

Eurocam Technology Park  
Chase Way, Bradford  
BD5 8HW, United Kingdom

**TELEPHONE**

+44 (0) 1274 395 333

**E-MAIL**

UKCS@burg.biz

Printing and typesetting errors as well as technical changes, minor dimensional and weight differences reserved.