



# Electronic Door Lock

## secuENTRY 5609 easy secuENTRY 5609 Cylinder

- de Montage- und Bedienungsanleitung
- en Assembly and User Manual

- fr Download: [www.burg.biz](http://www.burg.biz)
- nl Download: [www.burg.biz](http://www.burg.biz)
- it Download: [www.burg.biz](http://www.burg.biz)
- es Descarga: [www.burg.biz](http://www.burg.biz)
- pt Download: [www.burg.biz](http://www.burg.biz)
- se Download: [www.burg.biz](http://www.burg.biz)
- no Download: [www.burg.biz](http://www.burg.biz)
- dk Download: [www.burg.biz](http://www.burg.biz)
- fi Ladattava tiedosto: [www.burg.biz](http://www.burg.biz)
- el λήψη: [www.burg.biz](http://www.burg.biz)
- tr İndir: [www.burg.biz](http://www.burg.biz)
- ro Descărcare: [www.burg.biz](http://www.burg.biz)

- pl Pobieranie pliku: [www.burg.biz](http://www.burg.biz)
- cz Stáhnout: [www.burg.biz](http://www.burg.biz)
- hu Letölthető: [www.burg.biz](http://www.burg.biz)
- sl Download: [www.burg.biz](http://www.burg.biz)
- sk Download: [www.burg.biz](http://www.burg.biz)
- hr Download: [www.burg.biz](http://www.burg.biz)
- ru загрузка: [www.burg.biz](http://www.burg.biz)
- bg Download (зареди): [www.burg.biz](http://www.burg.biz)
- et Download: [www.burg.biz](http://www.burg.biz)

BURG-WÄCHTER KG  
Altenhofer Weg 15 • 58300 Wetter • Germany  
info@burg.biz • [www.burg.biz](http://www.burg.biz)

BW\_5609 easy Zylinder\_BA\_sE\_006101 kfs/sds 10/2016

### Introduction

Congratulations to this Burg-Wächter quality product! Thank you for choosing the electronic door locking system secuENTRY 5609 easy from the house of BURG-WÄCHTER. This system has been engineered and produced according to the most recent technical possibilities and conforms high security requirements. The electronic cylinder can easily and without any drilling or cable laying be applied to every door with PZ perforation and with a door thickness of up to 118 mm (59/59 mm, measured centre fixing screw). The electronic cylinder is ideally suitable for new installation as well as for retrofitting.

### Contents of this manual

- A General remarks
- B Assembly
- C Programming/Function/Operation
- D Technical data
- E Changing batteries
- F Emergency key
- G Warranty/Environment

### A. General remarks

Please read this instruction manual carefully before starting with assembling or programming. Store it away safely. We wish you much joy with your new locking system.

The secuENTRY 5609 easy cylinder can be used with the following opening devices:

- Keypad PINCODE
- Keypad FINGERPRINT
- Smartdevice/App

The opening devices are separately available.

### Administratorcode / QR code

To every secuENTRY 5609 easy cylinder, a QR code is attached that is necessary for introducing a keypad as well as for the integration in a locking system via the optional secuENTRY software. **Without a matching keypad, opening media (users) can only be introduced to the cylinder via the optional software. The administrator code can as well be found on the note with the QR code.**



1 Cylinder  
(SN; MAC; AES; ADM)

**Attention! With a loss of the administrator and/or the QR code, the reprogramming and the usage of all administrator functions is not possible anymore. Please store away safely!**

*Tip: The QR code can also be saved in an electronic form, scanned as a file or photo onto a secured data carrier.*

**For possibly occurring injuries or damage during the assembly or due to a wrong handling, the manufacturer accepts no liability.**

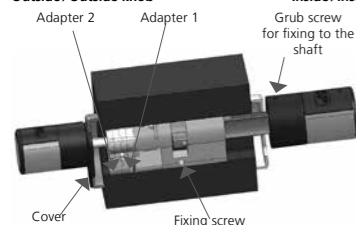
### B. Assembly

In the following, the assembly of the secuENTRY 5609 easy cylinders is being explained. Please read this instructions carefully before the assembly.

The cylinder is provided with a special snap-in mechanism which offers you the possibility to apply the cylinder to doors with a thickness of up to 118 mm (59/59 mm, measured centre fixing screw). A measurement in advance is not necessary.

### Outside / Outside knob

### Inside / Inside knob



Schematic representation of the cylinder

### Please note

The basic measurements of the cylinder are 30mm on each side. Delivered, the outside knob is pushed together completely (to smallest door thickness). Before you assemble the cylinder to your door, an adjustment to the respective door thickness is needed in advance.

The loosening and fixing of outside and inside knob happens via the integrated grub screw inside the knob.

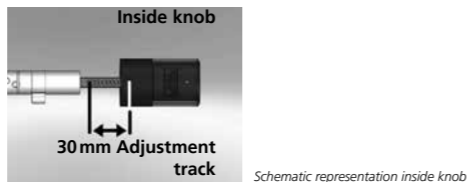
**Attention: Never slide off the inside knob from the shaft as in this case the electronics will be damaged! The grub screw that fixates the catch on the shaft, can only be slightly loosened and always remains inside the plastic knob. The grub screw functions as a cylinder protector!**

Please proceed carefully with the assembly. Avoid collisional or plunge movements by all means. The lock must not be greased nor oiled.

### Proceed with the assembly as follows:

1 Rough estimation of door thickness (incl. fittings)

2 Slide off the outside knob from the shaft, shift the inside knob over the snap-in mechanism (2.85 mm interval) to the desired measurement.



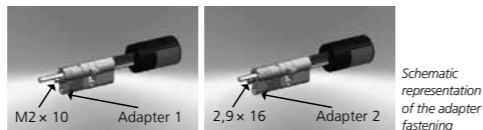
Schematic representation inside knob

3 According to the door thickness, you have the chance to fit appropriate adapters to get an improved duct of the emergency key.

Following combinations are possible:

Distance fixing screw/fitting (mm) on the outside	Adapter 1	Adapter 2	
< 43	-	-	
44 – 53	X	-	X: Selection
54 – 60	X	X	--: not provided

Table 1: Distance fixing screw/fitting [mm] on the outside and the thereto necessary adapter.



Schematic representation of the adapter fastening

4 Slide the secuENTRY 5609 easy cylinder from outside to inside through profile cylinder opening and tighten the fixing screw.



5 Shift the inside knob over the shaft until you have reached the desired measurement. Please ensure that the distance rotary knob/door fitting is 1 mm minimum. Subsequently fixate the rotary knob with the help of the grub screw.

6 Before you fixate the outside knob, please check whether you want to apply the included cover for the profile cylinder cutout. In this case remove the protective foil and fixate the cover in the cutout of the lock.



7 Slide the outside knob over the shaft to the desired position and fixate it with a distance of at least 1 mm to the fitting with the help of the grub screw.



8 The function test needs to be conducted with an open door.

### C. Programming / Function / Operation

The introducing of the keypad to a cylinder happens either via the keypad itself or via the secuENTRY software. To operate a cylinder via a keypad, both units need to be adjusted to one another in advance. For this, please proceed as follows:

### Introducing via keypad

- Turn on the keypad via the button
- Afterwards, click on *FUNC*, scroll down with 2 until "Menü Sprache/Language" appears
- Confirm with
- Scroll down with 2 until your respective language appears and confirm again with
- Afterwards, click on *FUNC*, until "Menu/Code change" appears
- Via the buttons 1 and 2 you can now scroll down until you get to the "Menu Administrator"
- Confirm with
- Via the buttons 1 and 2 you can now scroll down until you get to the menu Admin. setup "Setup..."
- Confirm twice with
- Enter the admin code of the to be introduced unit.
- After a successful logging-in, "Dataset has been stored" appears on the display

**Attention! Make sure that no other powered secuENTRY unit is in close vicinity during the logging on of the keypad resp. a new cylinder as it can be responded to mistakenly. In case of doubt, these units need to be disconnected from the mains in advance (remove batteries).**

### Introducing via secuENTRY software

Please learn about the procedure from the instruction manual of the respective software.

### Opening

The secuENTRY 5609 easy, depending on the version, can be operated via a 6-digit secret code, the BURG-WÄCHTER KeyApp or with fingerprint.

### Opening via pin code

- Turn on the keypad via the button
- Enter the 6-digit code (factory-set "1-2-3-4-5-6"). The display shows "Please turn the knob!" and the integrated LED of the cylinder flashes.
- Turn the cylinder knob.

### Opening via fingerprint

- Turn on the keypad via the button
- Pull the introduced finger centrally, from top to bottom over the sensor. "Please turn the knob!" appears on the display and the integrated LED of the cylinder flashes.
- Turn the cylinder knob.

### Opening via the BURG-WÄCHTER KeyApp

- Hold your smart device in front of the cylinder knob and push the access button in your KeyApp.
- The integrated LED of the cylinder flashes at a successful opening.
- Turn the cylinder knob.

The BURG-WÄCHTER KeyApp is available for download in the AppStore or Google Play Store. Just search for the keyword "secuENTRY" or "KeyApp".

Compatible with Samsung Galaxy S4, S4 mini, S5 and S5 mini from Android 4.3 KitKat or 5.0 Lollipop, Apple iPhone 4S, 5, 5S, 6, 6S from IOS 8.1.3.

Please check at: [www.burg.biz/secuentry/description](http://www.burg.biz/secuentry/description) whether further smartphones are compatible with the app.

### D. Technical data

Mechanical emergency opening	✓
Lock wait	After 3 x incorrect code entries 1 minute, afterwards 3 minutes each
Power supply	2 x MIGNON LR6 ALKALINE
Smart Device / KeyApp*	✓
Smart Device / KeylessEntry*	✓
Apple Watch / KeyApp*	✓

\* Functions only via the optional secuENTRY software

### Additional features via the optional secuENTRY software e.g.:

- User administration
- History function
- Assignments of permissions

### Optical signalling

Inside the turning knob on the outside of the door there is an optical signalling in form of a LED. Following hints are given by the LED:

- 1 x short: cylinder engages the clutch
- 2 x short: cylinder disengages
- 1 x short, 1 x long, 2 sec. break, repetition: Lock in programming mode
- 5 x short, 2 sec. break, repetition for 20 sec.: Battery inside the cylinder empty

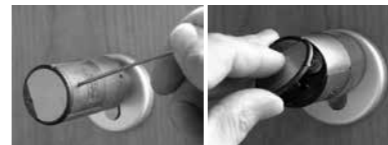
### About interferences with Bluetooth devices

Bluetooth devices make use of the same frequency range (2.4 GHz) like Wi-Fi devices. Due to this, interferences that cause errors or interrupt communication may occur. In such a case, unneeded devices should be de-energised.

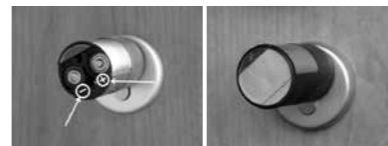
### E. Changing batteries

1 Loosen the upper grub screw of the cylinder's lid with the included Allen key. This can only be turned out until the opening of the lid and will not fall out.

2 Open the lid



3 Change the batteries. Please consider the appropriate polarity that is displayed inside the case. Mount the lid again.



### F. Emergency key

With the mechanical emergency key you can grant yourself access in cases of system errors.

1 Pull out the emergency key at the hinge and afterwards insert through the indicated slot of the cover.



2 Turn the key 90° clockwise. During this, maybe slightly move the outside knob to the right and left to release the mechanism.

3 Turning of the outside knob. The opening happens after one complete turn at the latest.

Turn back the key and pull it out. For closing the emergency lock, the rotary knob needs to be turned both directions twice.

### G. Warranty / Environment

### Warranty

To provide you with a qualitative impeccable and valuable product and to optimally help you in the case of service or repair, it is necessary that flawed or defective devices are handed back to your retailer together with the valid administrator code and/or QR code as well as with the original proof of purchase.

With returning according to your cancellation right, all components need to be in factory setting and the seal on cylinder and knob need to be undamaged. In the case of a disregard, warranty expires.

### Disposal of your device

Dear customer,

please help to avoid waste. If you consider to dispose of this device, please note that many components of it consist of valuable materials that can be recycled.



We point to the fact that electric and electronic devices as well as batteries are not to be disposed in the household rubbish but need to be collected separately. Please inform yourself at your local competent authority about respective collecting points for batteries and electric waste.



For questions about the EG declaration of conformity please contact info@burg.biz..