



profi
scale

LOCATE M



ProfiScale LOCATE M Multifunction detector

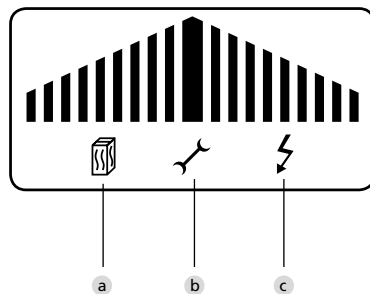
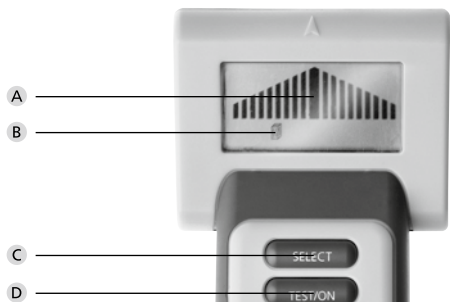
en Operating instructions

BA Locate M 04/2016

BURG-WÄCHTER KG
Altenhofer Weg 15
58300 Wetter
Germany



profi
scale



Introduction

Play it safe before you start to drill. The ProfiScale LOCATE M electronic multifunction detector will detect everything that lies behind the plaster. Locate metal pipes and power cables quickly and easily or track studding and cavities. With the aid of visual and acoustic indications, the device tells you exactly where it's safe to drill.

The ProfiScale LOCATE M is a modern detector. It was designed to locate metallic objects, wooden beams and live cables in ceilings, floors and walls. Use the ProfiScale LOCATE M to minimise the risk of causing damage to live cables, metal pipes and objects when drilling.

Illustration

- A Display
- B Mode
- C SELECT button
- D On/off button

Display

- a Wood detection mode
- b Metal detection mode
- c Voltage detection mode

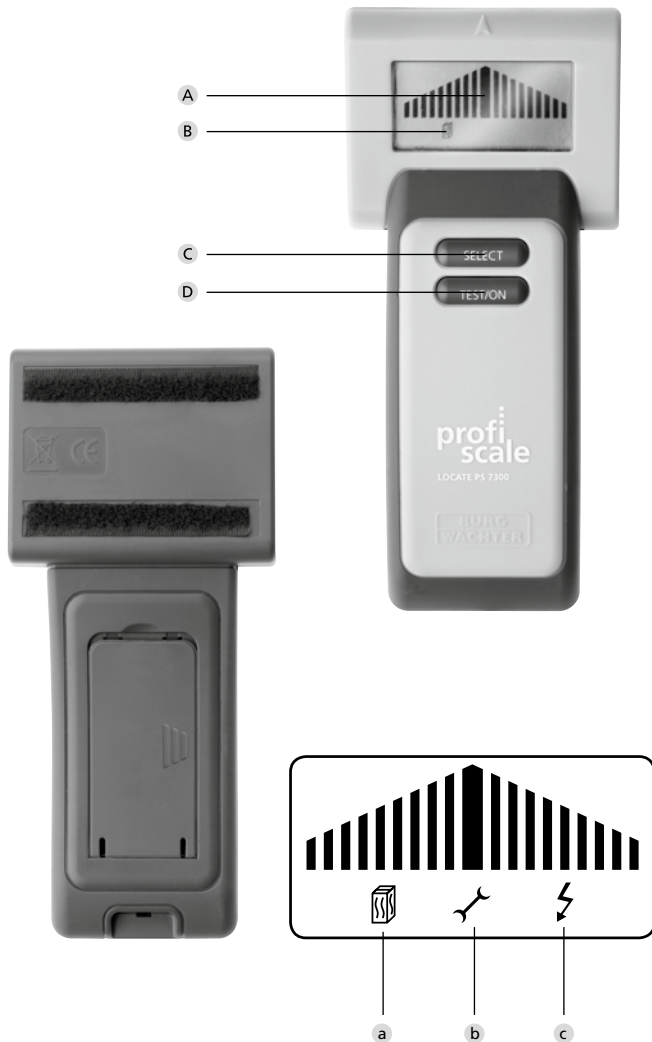
Safety instructions

Failure to observe the following instructions may result in personal injury:

1. Before using the device, you must read these instructions carefully to ensure that you operate the device safely. Keep these instructions in a safe place.
2. Shielded or live cables in metal cladding, metal walls or thick walls cannot be detected. In this case, you can use the metal detection mode to take readings.
3. Proceed with caution when hammering nails, cutting or drilling into walls, ceilings or floors containing cables or pipes close to the surface.
4. The device's detection capability may vary due to the humidity of the material, composition of the wall, its coating and the size of the object to be detected. This can lead to a reduction in detection depth.
5. Do not use the device to find cables whose voltage lies outside the specified voltage range.
6. Before using the device, check that it is working properly.
7. If you obtain unclear readings, you should, if possible, choose another location to drill, screw etc. If in doubt, seek expert advice.
8. Keep the device away from children and unauthorized persons.
9. For safety reasons and to preserve the warranty on the device, repairs to the measuring device must only be carried out by qualified personnel using genuine parts.



profi
scale



10. Never expose the device to an electric voltage, as this could damage the electronics.
11. Do not use the device in the vicinity of inflammable or explosive gases.
12. Do not use the device if it is defective.
13. Handle the device with care and do not drop it.
14. To avoid functional errors, do not dismantle the device.
15. Keep the device clean and dry.
16. When not in use, the device should be stored in the bag supplied.
17. Avoid contact with water and dust.
18. Do not use abrasive cleaners or solvents to clean the device. Use a damp cloth and mild detergent.
19. Check the battery/batteries regularly to prevent damage.
20. Remove the battery if you are not going to use the device for a long period.

Technical data

Congratulations!

Thank you for choosing ProfiScale quality measurement technology by BURG-WÄCHTER. BURG-WÄCHTER offers a warranty of 2 years' duration from the date of purchase. The warranty does not cover damage caused by improper use, overloading the device or incorrect storage as well as normal wear and defects that only have an insignificant effect on the value or usability of the device. The warranty shall be immediately invalidated if unauthorized persons work on the device. In the event that a warranty claim arises, please hand over the entire device incl. packaging, description and batteries along with the sales receipt to your dealer.

Technische Daten

Typical measuring depths Wooden beams of 30 × 30 mm: ≤ 30 mm
Metal pipe of Ø 20 mm: ≤ 50 mm
Voltage for 90 – 250 V
bei 50 – 60 Hz: ≤ 50 mm

Operating temperature -7°C – 40°C below 75 % RH

Storage temperature -20°C – 50°C below 85 % RH

Power supply 9V compound (e.g. 6LR61)

The detection depth may vary due to the humidity contained in the material, the wall structure and the paint etc.

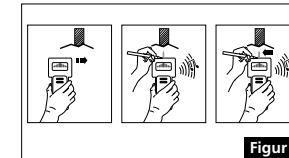
Operating the device

Switching on

Press and hold the "TEST/ON" button for approx. 3 seconds. The device switches on and displays the last mode used.

Wood detection mode

1. Press the "Select" button until the display for the wood detection mode appears. Hold the device against the wall and briefly press the "TEST/ON" button. Two short tones sound to indicate that the device is calibrated. If the display flashes, you must recalibrate the device at another location. Move the device across the wall applying a consistent contact pressure.
2. If the alarm indicator appears, a signal sounds. Stop the device. This means that it has found a corner of the wood. Mark the point with a pen.



Figur 1

3. Continue moving the device slowly sideways across the wall until the alarm indicator disappears and the signal no longer sounds. Then move in a different direction to determine the extent and centre point of the wood. See Figure 1.

Correcting an incorrect reading:

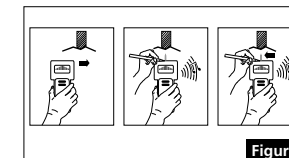
If the display starts flashing and a beep tone sounds, start again a few millimetres further on.

Note

1. The function can normally be performed on plasterboard walls. If other materials are used in the walls or behind the wall covering, the readings may be impaired.
2. If, by chance, you are holding the device directly over a wooden batten or a similar object when you start, neither the display nor the alarm will activate. Please move the device slightly to a new position.
3. The wall surface on which you are using the device should be even.
4. We also recommend that you use the "metal detection and voltage detection" mode to check that the wooden batten or beam is not a pipe or a cable. The device can detect small screws or nails.
5. Always hold the device with one hand while keeping your other hand away from the device to prevent interference from the second hand.
6. The device may not be able to precisely identify two objects that directly abut each other inside the wall.

Metal detection mode

1. Press the "Select" button until the display for the metal detection mode appears. Hold the device away from any metal objects and briefly press the "TEST/ON" button. Two short tones sound. Move the device slowly across the wall applying a consistent contact pressure.
2. If the alarm indicator appears, a signal sounds. Stop the device. This means that it has found a corner of a metal object. Mark the point.

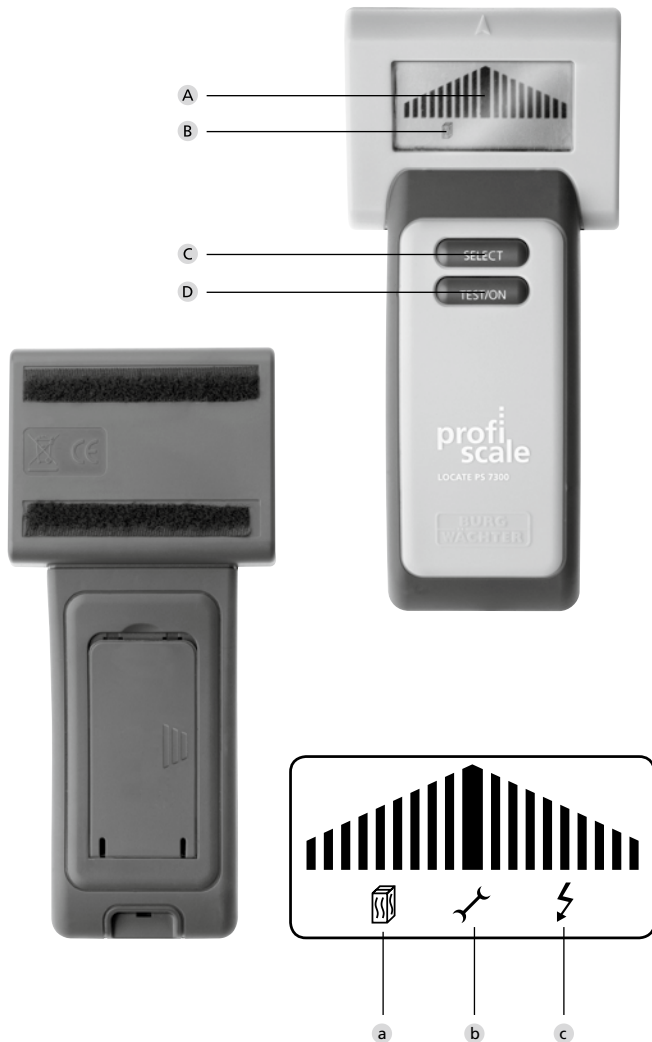


Figur 2

3. Continue moving the device slowly sideways across the wall until the alarm indicator disappears and the signal no longer sounds. Then move in a different direction to determine the extent and centre point of the metal. See Figure 2.



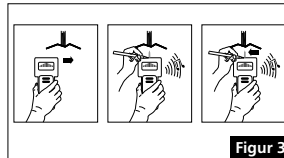
profi scale



Voltage detection mode

To obtain the most accurate reading, hold the device away from any voltage source.

1. Press the "Select" button until the display for the voltage detection mode appears. Hold the device against the wall and briefly press the "TEST/ON" button. Short tones sound. Move the device across the wall applying a consistent contact pressure.
2. If the alarm indicator appears, a signal sounds. Stop the device. This means that it has found a corner of a live cable. Mark the point.



Figur 3

3. Continue moving the device slowly in the same direction across the wall until the alarm indicator disappears and the signal no longer sounds.

Then move in a different direction to determine the extent of the cable. See Figure 3.

Note

1. The device cannot detect wires/cables located beyond the device's detection depth or covered by plywood.
2. Rubbing the device along or bumping it against the wall can generate static electricity, which in turn can cause a false reading.
3. Interference from magnetic and electric fields
Since the device reacts to extremely low voltages, the device may be triggered incorrectly in some cases. For example, if a poorly insulated cable passes through a damp wall. In this case, you should carry out a further check using a voltmeter.

Note the following

1. Shielded cables or wiring in metal casings, cladding, metal walls etc. will not be detected.
2. Proceed with caution when drilling, screwing or cutting into wooden walls or floors which could contain cables and pipes just below the surface.
3. Always switch off the power supply when working close to power cables.
4. Depending on the distance from the electrical cable or pipe to the wall surface, the device may detect these objects in the same way as wood.
5. The device will switch off automatically if left idle for more than 20 seconds.

Replacing the battery

If the symbol "🔋" appears on the display, you must replace the battery. Remove the battery compartment cover, replace the 9 V battery, connect it to the cable and fit the battery into the compartment. Close the battery compartment cover correctly.

Disposal of the tool

Dear Customer,

Please help us avoid unnecessary waste.

Should you intend to dispose of this device at any time, please remember that many components of this device contain valuable materials, which can be recycled.



Please be aware that electrical and electronic equipment and batteries shall not be disposed of as household waste, but rather collected separately. Please obtain information on the collecting points for electrical waste from the responsible authority of your municipality.



If you have any questions concerning the EC declaration of conformity, please use info@burg.biz