



**BURG
WÄCHTER**

Door eGuard DG8100



Electronic door spyhole

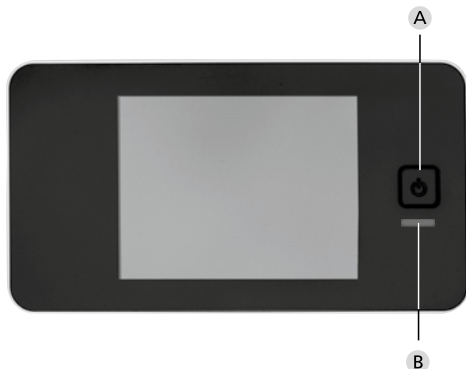
en Operating instructions

BURG-WÄCHTER KG
Altenhofer Weg 15
58300 Wetter
Germany

BA Door eGuard 07/2013

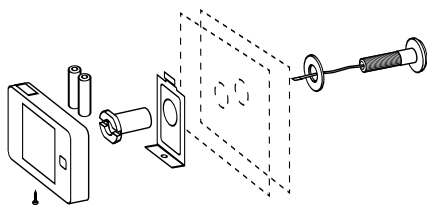
www.burg-wächter.com

Structure



Figure

- A ON/OFF button
- B red LED



Introduction

Dear customer,
thank you very much for deciding for Door eGuard manufactured by BURG-WÄCHTER. Door eGuard is a battery-operated system with a camera and colour monitor, easy to install and providing its user with the certainty of being able to see anything happening outside the entrance door without being seen. Thanks to its large adjustment range, this door spyhole can be used with any common door with a thickness from 38 to 110mm. The camera optics can cover existing holes in the door of up to 22mm. Thanks to the camera optics with a large viewing angle, even persons hidden near the door can be identified.

Important: Please read the entire User Manual before you start to mount the device.

Let us wish you a high level of security and quality of living with your electronic spyhole.
Your BURG-WÄCHTER

Important notes

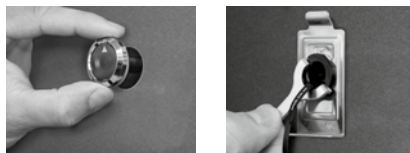
- The device is intended exclusively for indoor use.
- In case the device is not to be used for a prolonged period of time, please remove the batteries.
- Remove the batteries before cleaning.
Clean the device with a damp cloth only, no additional detergents may be used.
- No liquid shall enter the device.
- Please contact your vendor in case of questions or problems.

Technical data

Power supply	2AAA Micro 1,5V (e. g. LR03)
Monitor	3,2" TFT
Image sensor	CMOS
Viewing angle	105°
Door thickness	38 – 110 mm
Dimensions	125 x 68 x 15 mm
Weight	100 g (without batteries)

Montage

1. At the eye level, drill a hole with a diameter of 14 mm, or, as the case may be, use an already available hole (enlarge it if necessary).
2. Slide the ring pad onto the camera thread and insert it from outside through the hole in your door. Make sure that you do not damage the cable and that the marking on the camera points upwards.



3. Fix the retaining plate to the inner side of your door, while inserting the cable through the hole in the retaining plate first. Then pull the cable through the sleeve and use the attached fastening wrench to screw it onto the camera thread.

4. Connect the cable to the connector on the rear side of the monitor. Then attach the monitor to the retaining plate and use the locking screw in the bottom to fix it firmly.



Activation and battery replacement

A burning red LED under the ON button indicates low batteries. Please replace the batteries.

1. Slide the battery compartment cover aside.
2. Insert 2 micro-batteries respecting the polarity.
3. Close the battery compartment cover again.



Operation

Press the ON button, the image appears immediately for 10 seconds on the monitor. Then the device switches off automatically.

Disposal of the device

Dear Customer,

please help us to reduce waste. Should you ever intend to dispose of this device, please bear in mind that many components of the device contain precious materials, which can be recycled. Please do not dispose of this device as common waste, but rather request information from the responsible local authority on the collecting points for electric waste. Please do not throw the device into the residual waste bin. Contact the responsible office in your area and ask about collection points for electrical waste.

The dustbin symbol indicates:



Discharged batteries or accumulators must not be disposed as common waste. Please return the batteries/accumulators to their vendor or the local recycling yard. Their return is free of charge and it is legally required. Misprints, typographical errors and technical changes reserved.

Printing and typesetting errors excepted. We reserve the right to make technical changes.