
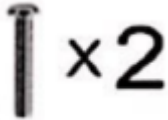






INSTALLATION INSTRUCTIONS



PACKAGE CONTENTS

PART NAME	PART CODE	ITEM PICTURE
Console Safe	A	
Hex Button Head Stainless Steel Socket Cap Screw (M6 X 30mm)	H	 x2
Handle	I	 x1
Flat Washer (M6 X 20mm X 1.5mm)	J	 x2
Hex Lock Nuts (M4)	K	 x1
Key (M6)	M	 x2

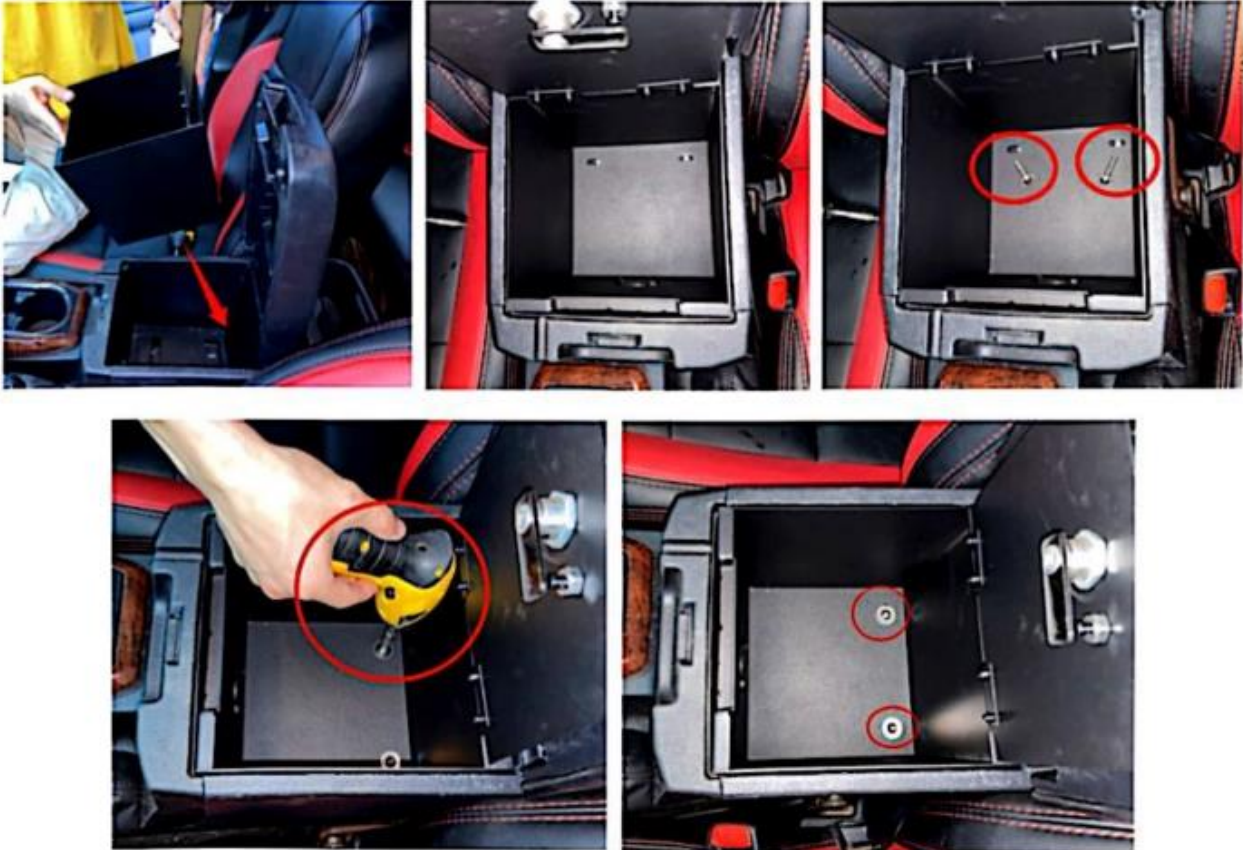
STEP 1: PREP CENTER CONSOLE

The stock center console box needs light prep work. Pop open your center console, remove the pad at the bottom (the console vault won't fit if you leave it in), and locate the two 10mm bolts. Remove them and then clean up inside that compartment from all of the gunk and junk and funk that gets all up in there. This new console box will be housed in this area, and you'll want it free of debris.



STEP 2: INSTALL THE NEW CONSOLE BOX

1. Now let's slide that console box into place.
2. Align the bottom slots with the factory thread holes and then install the supplied screws and washers (PARTS H & J & K)



STEP 3:

ATTACH THE HANDLE KNOB USING THE SUPPLIED NOT AND BOLT

