

PARD DS

Digital Rifle Scope

Additional Manual



Nov 2022

Applies to New Zealand Market

Important

- This manual applies to all models of the DS Series, the LRF Model contain extra features which aren't useable in the standard version – i.e. Ballistics
- This device contains a visible laser and laser IR Emitter (the IR Light). Because of the potential risk to your eyes vision do NOT look directly at either of these light sources, or point them towards other people, pets, and reflective objects
- Never remove the battery while the unit is switched on, even in sleep mode as this may cause the device to fail to start up or function abnormally. You may need to reinstall the software to correct this
 - Ensure that the LED light is NOT on before removing the battery
- Always remove the Battery from the device for charging and only use a quality charging device and batteries
 - These devices use 18650 FLAT TOP batteries (3.7v)
 - Remove the battery when the device is not being used (Storage)
- DO NOT power the unit from an external USB Battery source
- **Never point the device at strong sources of light, such as the sun, welding or a laser; damaged caused by such will void the warranty**

Videos

We have made a series of videos on setting up the PARD

All our videos are taken in New Zealand, they show the real-world results that can be achieved with the PARD. Visit pard.co.nz and look for 'How to videos' under the Support Menu

Support

If you have any questions or issues with your device, please contact us via the pard.co.nz website

Some variations may exist due to variations in the firmware

This manual is for New Zealand Only.

If you are after after hours support, please txt or email us as we do have families – it maybe a simple fix and we can reply quickly if available

Warranty

In New Zealand this device is warranted against defects in materials and workmanship for a period of two years from the date of purchase

This applies to the original purchaser only

Do not attempt to disassemble the device by yourself. If there are any issues please contact us.

All damage caused by misuse or accidental damage, including use in abnormal working conditions, damage caused by failure to follow the instructions or damage by batteries is not covered by the warranty

Setup

Videos

We have made videos of unboxing and setup/zeroing – they can be found under the Support menu of the website

Please watch them – Especially the Zeroing Video

Setup Steps

1. Install the Rings – ensure that you can rotate the focus on the lens
 - a. The Screws are in the plastic bag and an Allen key is provided
 - b. Ensure they are tight
 - c. As this is a 30mm Tube you can use any 30mm Rings
2. Turn it on
3. Press the MENU Button to bring up the menu
4. Adjust the Dioptre on the eye piece so you can read the text
5. Close the Menu
6. Adjust the front lens focus to suit what you are looking at
7. You are ready to Zero your rifle

How zero

We highly recommend that you watch the video we've prepared – its under the Support Menu and How To Videos on our website.

*One key point to stress – all digital and thermal scopes are different to 'day scopes' – for these you **MOVE** the Reticle **TO** the bullet hole – this is the opposite to what you normally do in a 'day scope' – its actually very simple*

NOTE – to Change Profiles (A,B,C,D,E) or change the reticle style or colour – you need to do this in the Reticle Adjustment Menu

IMPORTANT – before a LONG Press of the OK button, move to the Save tab on the right and plus or minus on that to Y (Yes Save) before these changes will be SAVED

To do this you need to use the Reticle Adjustment Menu

1. Bore Sight The Rifle and Scope – Typically at 50m
2. Access the Menu – Reticle Adjustment
3. Select the Profile Letter you want to change; Press OK (Single click of Turret)
4. It will now be highlighting the X Setting

5. Aim at the TARGET – Fire 1 Shot – Can you see the bullet hole; if yes, then
6. Re-aim at the TARGET – HOLD the rifle steady – tap either the + or – button WHILE keeping the rifle steady aiming at the TARGET
7. The Screen will now be Frozen
8. Use the turret to move the Reticle **TO** the bullet hole horizontally (X); once happy
9. Press the OK
10. Use the turret to move the Reticle **TO** the bullet hole Vertically (Y); once happy
11. Press the OK
12. The Screen will now move again
13. Fire another Shot
14. Repeat from Step 4 to do more adjustments
15. To Save – LONG PRESS of the OK button

Write the figures down somewhere to keep a record in case they are lost

Tip - If you can't see the bullet holes as they are too small – i.e. at 100m – Simply place a marker or draw around the bullet holes

Ballistics

Both models of the DS are equipped with Ballistics – the LRF version takes the data from the LRF

To use it

Turn it on in the menu to enable it if not done so already

- Press the LRF Button
 - A Range Marker will appear
- Place the LRF Aiming Box over the target
 - Press the LRF Button to Enter the range
- A New Aiming Point will appear with the Selected Range beside it – THIS IS YOUR NEW AIMING POINT

To adjust just repeat the process

WE RECOMMEND THAT YOU TEST YOUR DATA ON A TARGET AT YOUR INTENDED RANGES FIRST BEFORE HUNTING

We recommend to Register the DS on pard.co.nz under the support menu to be informed of any software updates as their will likely be updates and upgrades over time

Ballistics and Range Unit Selection

NOTE – Metric or Imperial settings are controlled from the Range Unit Menu

Parameters Menu

See Notes on How Ballistics Work

- Profile – A to E – Selectable for different rifles or Ammo (Ensure it matches the correct Profile)
- Velocity – either FPS or MS (see above)
 - This should be obtained via a Chronograph
- Bullet Weight (gr)
- Bullet BC (G1 only at this stage)
 - This should be taken from the ammunition box or maker of from your calibrations
- Altitude – Used for calculations – set this to your normal altitude
- Temperature Used for Calculations – Set this either to a normal hunting Temperature or what it actually is if shooting further
- Scope Height – Inch or MM – Height from the Bore to the centre of the lens
- Zero Range – Yards or Metres – the range you have zero'd the scope at
- Reference Point and Colour – Shows either a Line, Cross or Box for the new Aiming Point – plus Colour Options

NOTE When changing rifles, you **ONLY** select the Profile in the Reticle Adjustment Menu; the scope will read the ballistics related to the Letter

On and Off

Selects if the ballistics is active or not

- NOTE this doesn't affect your zero – if you don't active the ballistics it will not affect your zero.
- At all times when using the ballistics a NEW aiming point appears – the normal reticle remains where it is

Range Unit Selection

This controls BOTH what the LRF reads and also your ballistic settings

You can select:

- Metric – select Metres (Metres, m/s, mm)
- Imperial – select Yards (Yards, fps, inches) by selecting the RANGE

Laser Rangefinder Adjustment

Depending on your rifle and zero – you may find the laser box on the screen doesn't match where the actual laser is pointed.

To Check

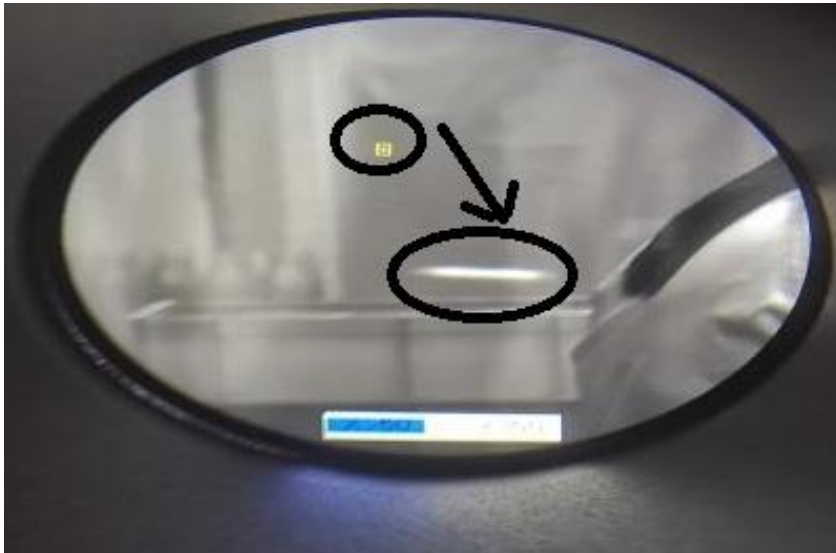
In the evening – turn the DS into Night mode

Observe the location of the real laser flashing – check against the Laser Box on the screen

You should do this at your normal shooting range

To Align

1. Open the Main Menu
2. LONG Press of the Day/Night Button
3. Dial using the turret the X and Y – Press the Turret to move between
4. LONG Press of the turret to save



Above, the yellow aiming box isn't over the white flashing beam, in this case it needs to be moved down and right.

You should get this for each profile.

Lens Cap

The lens cap is designed to come off

To put it back on is quite simple – we have made a video

<https://vimeo.com/908107750>