

PARD 007 SP

Extra Product Manual



Updated 31st Jan 2023

Applies to New Zealand Market

Important

- This device contains a visible laser and a laser IR Emitter (the IR Light). Because of the potential risk to your eyes vision do NOT look directly at either of these light sources, or point them towards other people, pets, and reflective objects
- Keep the IR light away from flammable objects, otherwise it may cause a fire.
- Turn off the IR light or use sleep mode when you are not actively using the device.
- **When fitting the device to your scope, treat it like a camera, be gentle, always PULL Pin clip back when attaching and releasing it from your scope**
- Don't remove the battery while the unit is switched on, even in sleep mode as this may cause the device to fail to start up or function abnormally. You may need to reinstall the software to correct this (It is very rare, but can happen)
- Always remove the Battery from the device for charging and only use a quality charging device and batteries
 - These devices use 18650 FLAT TOP batteries
 - Remove the battery when the device is not being used (Storage)
- DO NOT power the unit from an external USB Battery source
- **Never point the device at strong sources of light, such as the sun, welding or a laser; damaged caused by such will void the warranty**
- If you have questions please contact us; information online around the world are often incorrect or outdated and its best to get the correct information from us.

We highly recommend that you watch our videos online at pard.co.nz

Parallax on your Riflescope

Ideally this device requires rifle scopes that have parallax controls to obtain both the best imaging and the best accuracy. This is because if your scope is not in parallax, you could be potentially 'aiming' the scope just the same as you can with your head.

For scopes without parallax, ensure that the device is mounted centrally to the scope as practicable. If your scope does not have parallax you should test the accuracy before hunting.

You are able to focus the 007 more on the image than the reticle to make it better, we have a video here showing this on our FAQ Page

Videos

We have made a video of setting up a 007.

All our videos are taken in New Zealand, they show the real-world results that can be achieved with the PARD. Visit pard.co.nz and look for 'How to videos'

Support

If you have any questions or issues with your device, please contact us via the pard.co.nz website

Some variations may exist due to variations in the firmware

Support is available Monday to Friday 9-5; after hours please email, web chat or text first

This manual is for New Zealand Only

Warranty

In New Zealand this device is warranted against defects in materials and workmanship for a period of two years from the date of purchase. This applies to the original purchaser only

Battery Installation

This device uses a single 3.7v Lithium 18650 FLAT TOP rechargeable battery – please note the words FLAT TOP. We recommend using quality batteries!

The Battery is inserted Positive first. Ensure that the cap is closed tightly

NOTE

For first usage remove the battery and remove the protective tape that is over the positive terminal

SD Card Installation

If you wish to record video, insert a Micro SD card into the slot that is under the rubber cap.

Once you have installed the card; you need to FORMAT it via the menu

Setup Steps

1. Install the Collar
 - a. Select the best sized Insert for your scope's eye piece
 - b. The screws should either be at 3 or 9 o'clock for the PARD to be level
 - c. Use Electrical Tape or similar to Protect your scope and also to give something for the collar to grip on to
 - d. Don't over tighten the screws, they only need to be finger tight
2. Attach the 007 to the Collar
 - a. Pull the Locking Tab on the Left side of the 007
 - b. Align the notch in the collar, and twist the 007 to be straight up on the collar, once centred, release the tab and gently rotate the 007 until you will hear a click or the Locking tab is engaged
 - i. **Care should be taken during fitment of device to the adaptor, do not force the engagement, a slow twist and light effort allows for an audible click which confirms engagement**
 - c. To remove the 007, there is a release button on the left hand side, pull this and twist the 007 off the collar – **Ensure That you PULL the Mount Release Tab to release the locking Pin**
3. Turn the 007 on on
4. Press the MENU Button
5. Adjust the 007 Dioptre on the eye piece so you can read the text
6. Close the Menu
7. Look at the rifle scope reticle
8. Adjust the focus knob on the 007 until the reticle is in focus
9. Ensure that 007 is level with the Reticle, adjust the collar if needed
10. Now adjust the Parallax on your scope to bring objects in to focus
11. DONE

Once the 007 is setup, you will only use the Parallax and Zoom controls on your DAY SCOPE – the focus knob and dioptre on the 007 aren't moved. If the Reticle is out of focus, correct this with the focus knob under the 007

That's it; when you remove the 007 from the scope, and replace it that's all you will do, if you move it to another riflescope you will probably have to move the focus knob to suit that scope – that's all

Watch the Video on Setting up the 007 - <https://pard.co.nz/how-to/>

Custom Inserts

If the included inserts won't fit your scope or you want a perfect fit – we can make a specific insert for you – please see our website for details

LRF Laser Rangefinder

Distance

The distance that you can range is very much dependant on the conditions at the time – even big brand binoculars L or S etc who say their (Normal Binoculars) are rated to 3200 yards on highly reflective targets, very quickly point out that you are down to 2020 yards on trees and 1310 yards on game.

The 007 SP is rated to 1000m on highly reflective targets

Factors that affect ranging colour, Angle to Lens, Large Size, Sunlight, Atmospheric Conditions, and the object itself

Noise

You may hear a dit dit noise when the Laser Rangefinder is active – this only occurs when the LRF is on.

This is caused by the LRF unit inside the device and the body being lightweight and very compact – we don't have a large bump out the side interfering with the use and portability of the unit which allows for more space for shielding.

From the eye piece you can may hear it and the noise doesn't go very far either so its not going to disturb something.

The benefits of the small compact lightweight device with a LRF far outweigh this

ALL devices have been personally tested by us in New Zealand before they are sent out – the noise level isn't an issue to either its use or a warranty issue.

How to move the Range Finder Aiming Box (LRF Models Only)

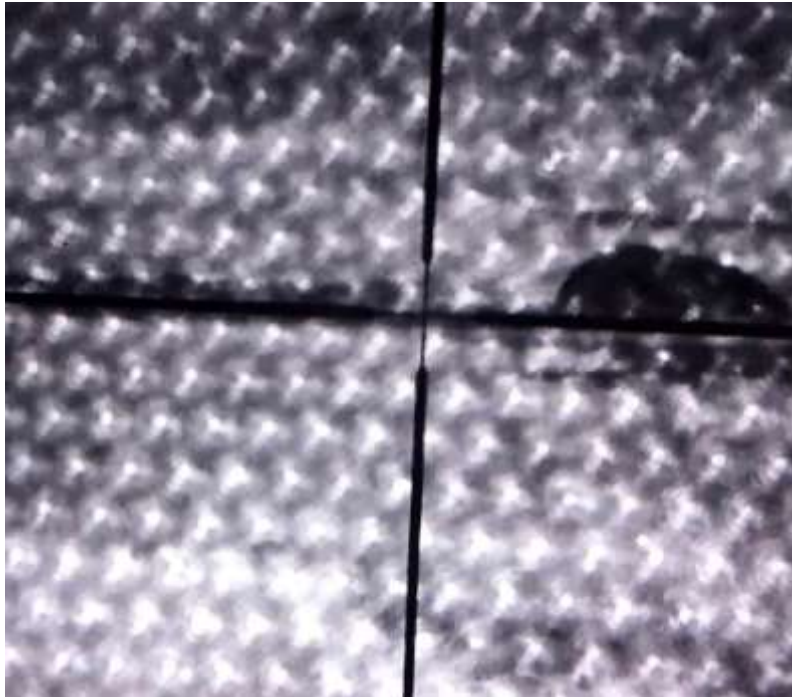
Do this in the evening or at night and in night mode – as you will see the actual laser beam, you can move the aiming box to exactly match the actual laser beam

1. Press Menu button to open the Menu
2. Long press the LRF button (the XY axis appears)
 - a. Move the Box using the + and – Buttons, and OK to move between the X and Y
3. Long press OK to save

Trouble Shooting

I can see circles in the scope.

If you see something like the below image, that's actually the laser itself.



The IR Torch is focused really tightly that you can see the laser itself.

What to Do:

Simply reduce the amount of Spot/Zoom you have on the IR torch, by pushing it in slightly.

The Red Laser isn't working

Just use the default settings in the menu – This will likely re-activate it

At close ranges the screen appears all white

This is the IR and its too bright for the 007 – its set for longer ranges to give you the range, but really close, say a tree near you etc this can occur

You can adjust the sensitivity of the 007 in the Exposure Menu – you can adjust it up and down – simply do it while looking at something at that range and adjust it to suit – remember that if you want to shoot longer ranges again you may need to adjust it back