

**Derks Custom Cars, Canada, 306 948 9914, matt@derkscustomcars.com**

## **Pre-Loaded AutoCal V3 tune installation instructions.**

In most cases your new AutoCal will come pre-loaded with the custom tunes that you have ordered for your vehicle. If we requested a 'read' from your ECM or TCM, please see the READ section below before proceeding!

Before you start, please make sure the battery of your vehicle is in good condition as the programming of your ECM and/or TCM can take up to 10 minutes. If need be, hook up a battery charger and turn off any accessories, radio, heater etc. in the vehicle while doing the programming. **For LB7 and LLY equipped trucks it is recommended to remove the radio fuses before starting to read or program!**

- Locate the OBD2 cable that came with the AutoCal and connect it to the AutoCal.
- Locate the OBD2 port in the vehicle; usually it is located to the left of the steering column, just below the lower edge of the dashboard. Connect AutoCal to the OBD2 port and it will power up.

### **Now we are ready to load the custom tunes in your vehicle.**

- Select the 'tune tool' and press the check mark button
- Select 'F3', Program Full and press the check mark button
- Select 'Select tune', scroll down to files you are instructed to flash and press check mark
- **TURN IGNITION TO RUN POSITION, DO NOT START VEHICLE**
- Press check mark until you are past the warnings.
- If this is the first time programming this vehicle, you will be prompted to commit a VIN license, please proceed with the check mark.
- Follow on screen instructions and wait for flashing process to complete.
- If there are addition steps needed they will be included in separate instructions.

You have now successfully installed your custom tune

## AutoCal V3 Controller Reading instructions

Before you start, please make sure the battery of your vehicle is in good condition as the reading of your ECM and/or TCM can take up to 10 minutes. If need be, hook up a battery charger and turn of any accessories, radio, heater etc. in the vehicle while doing the reading. **For LB7 and LLY equipped trucks it is recommended to remove the radio fuses before starting to read or program!**

- Locate the OBD2 cable that came with the AutoCal and connect it to the AutoCal.
- Locate the OBD2 port in the vehicle; usually it is located to the left of the steering column, just below the lower edge of the dashboard. Connect AutoCal to the OBD2 port and it will power up.

Now you are ready to **read** the custom tunes from your vehicle.

- Select the 'tune tool' and press the check mark button
- Select 'F1', Read Tunes' and press the check mark button
- **TURN IGNITION TO RUN POSITION, DO NOT START VEHICLE**
- Select 'Select Controller', scroll down to Controller you are instructed to read and press check mark
- Follow on screen instructions and wait for reading process to complete.
- Repeat if other controller needs to be read
- Turn off Ignition

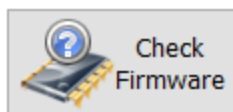
Make sure you have **Efilive Scan and Tune** installed on your computer.

Available for download [here](#) Click on DOWNLOAD V8

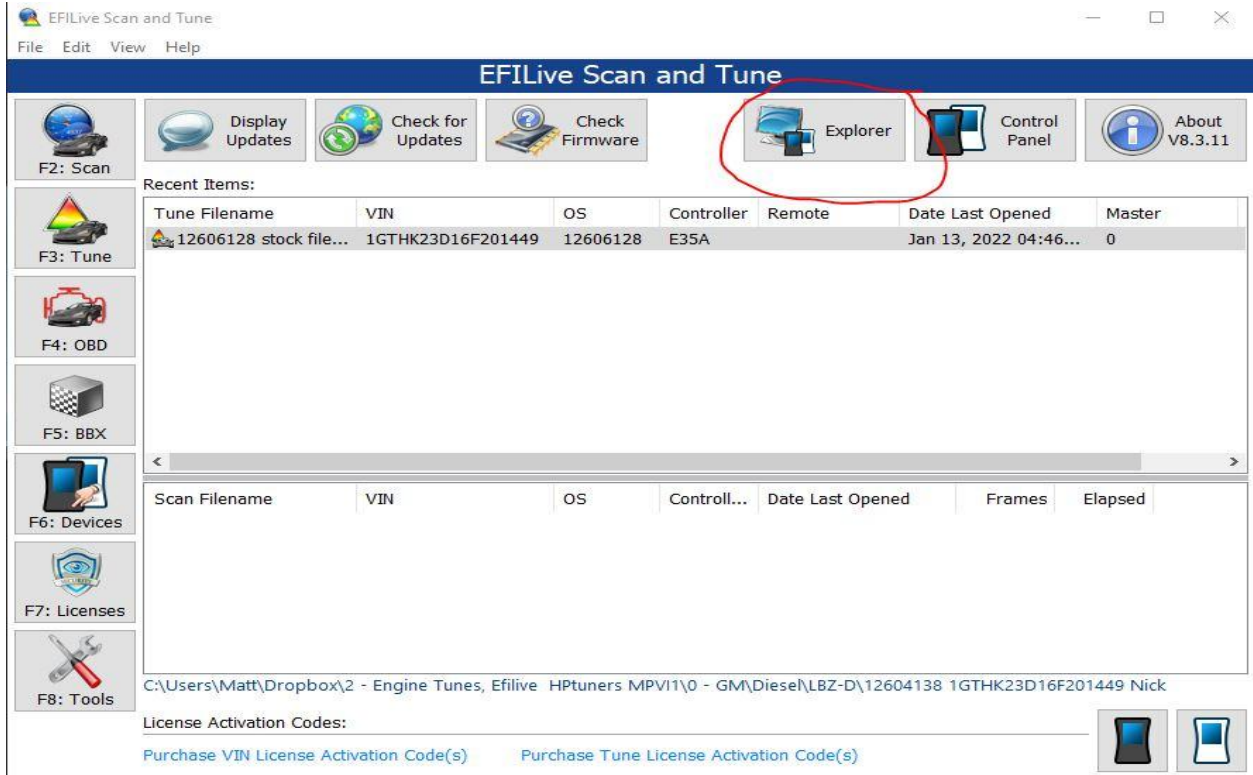
Once downloaded and installed, start up **Efilive Scan and Tune**.

Connect the AutoCal with supplied USB cable to your computer.

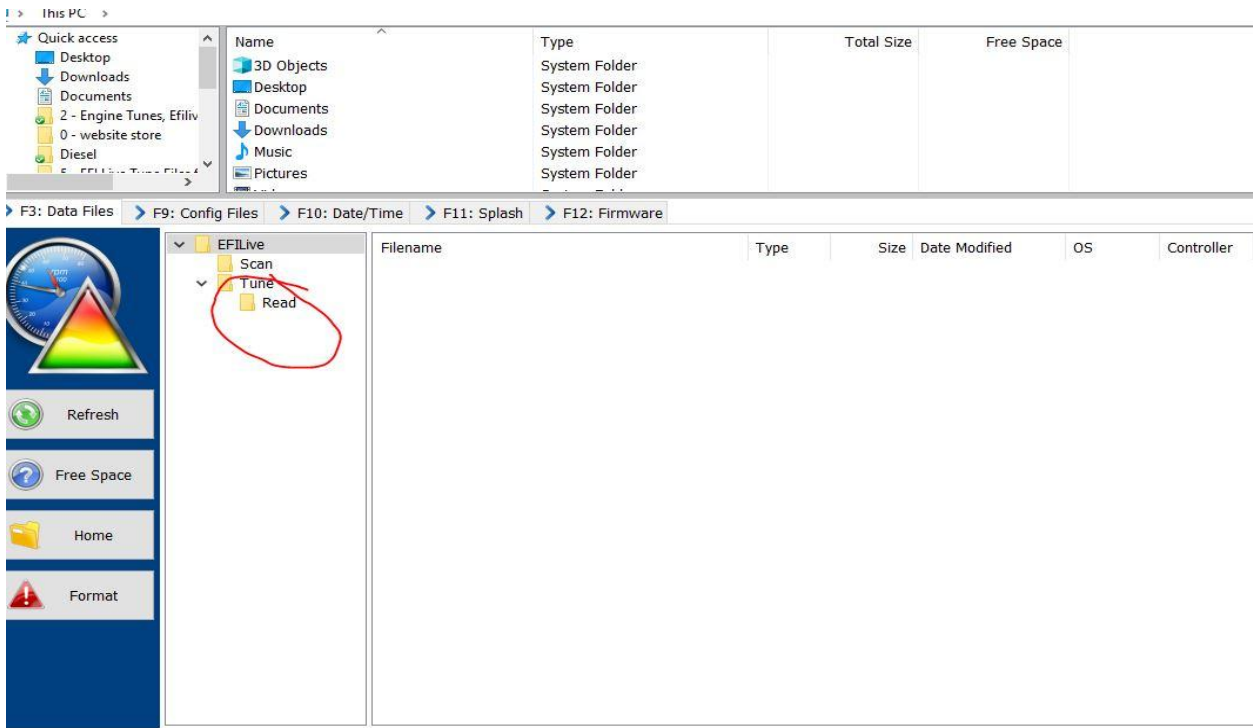
If there are any issues, please check for firmware updates.



Click on 'Explorer', circled in picture below



A new window will open, showing you the contents of your AutoCal in the bottom half of the new window



the files that you just read from your vehicle will be in the Read folder, copy them to an easy to remember place so they can be emailed back to me, [matt@derkscustomcars.com](mailto:matt@derkscustomcars.com)

## Installing Emailed Custom Files

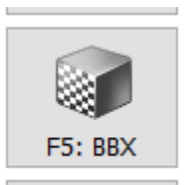
Files will either be emailed in XXXX.CTZ or XXXX.BBX format.

### XXXX.CTZ files:

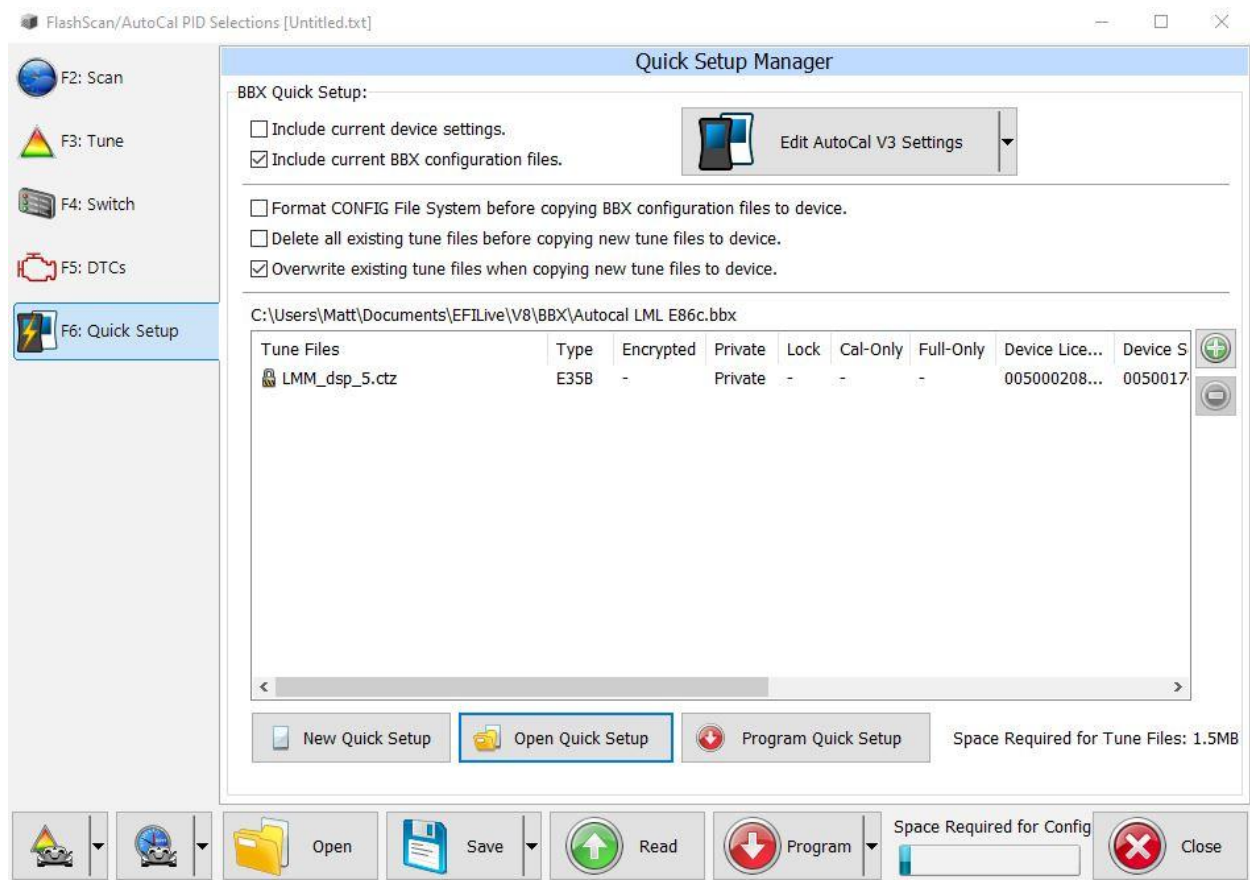
To install 'CTZ' tune files onto your AutoCal, save them onto your computer and copy them, with Efi Explorer as pictured above, into the 'tune' folder of your AutoCal. Now the files will be ready to be installed into your truck.

### XXXX.BBX Files:

With Efilive Scan and Tune open Click on BBX, in the next window click on Quick Setup.



Select 'Open Quick Setup' and locate the 'xxx.bbx' files that you have received with this email. You might have to go back to your email and save them somewhere, like on your desktop.



FlashScan/AutoCal PID Selections [Untitled.txt]

Quick Setup Manager

BBX Quick Setup:

- Include current device settings.
- Include current BBX configuration files.
- Format CONFIG File System before copying BBX configuration files to device.
- Delete all existing tune files before copying new tune files to device.
- Overwrite existing tune files when copying new tune files to device.

C:\Users\Matt\Documents\EFILive\V8\BBX\Autocal LML E86c.bbx

Tune Files:	Type	Encrypted	Private	Lock	Cal-Only	Full-Only	Device Lice...	Device S
LMM_dsp_5.ctz	E35B	-	Private	-	-	-	005000208...	0050017

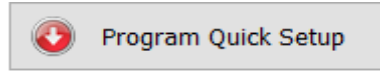
New Quick Setup Open Quick Setup Program Quick Setup

Space Required for Tune Files: 1.5MB

Space Required for Config

Close

Once opened, click on



Wait for the progress window to close.

The AutoCal is now ready to flash your vehicle with the files provided. They will be in the 'Tune' folder

Flash the updated files into your ECM or TCM as per instructions above

If you have any questions, please email me at [matt@derkscustomcars.com](mailto:matt@derkscustomcars.com)

Rev Oct 28 2022