

Contact Us: *FACTORY UTV LLC.*

9237 Beatty Drive Sacramento, CA 95826

Phone : (916) 383-2730

E-mail : info@factoryutv.net

Go online: www.Factoryutv.net



U.H.M.W. Skid Plate / Under Armor Package

Ultra. High. Molecular. Weight. Polyethylene All Terrain Skid Plate / Under Armor Kit For UTV's

Installation guide

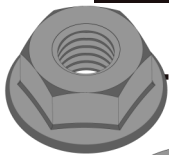
Can Am Maverick MAX (2013-2014)

Covers : DPS, XRS, And Turbo Models



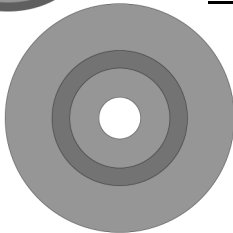
Can Am Maverick Max (2013-2014)

Skid Plate Hardware



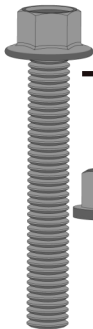
M6- 1.0 Flange Lock Nut

4x



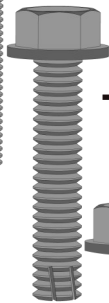
Counter Sunk Washers

18x



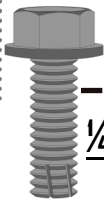
M6- 1.0 x 40mm Flange Bolt

4x



1/4" - 20 x 1 1/4" Self Tapping Bolt

2x



1/4" - 20 x 3/4" Self Tapping Bolt

16x

Spacers

2x

Stock Hardware

Counter Sunk

Washers

M6- 1.0 x 20mm

Thread Forming Bolts

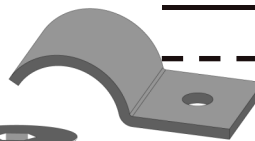
Re-Use

Stock Hardware

As Needed.

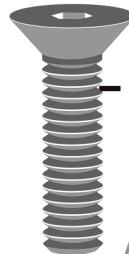
Skid plate will form to chassis as bolts are fastened securely.

A-Arm Hardware



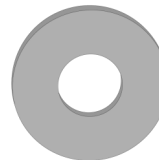
1"x1" - "D" Clamps

15x



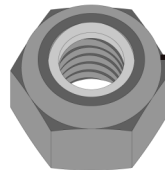
1/4" - 20 x 1" Counter Sunk Bolt

15x



1/4" Gold Washers

15x



1/4" - 20 Ny-Lock Nut

15x

*Drilling Instructions : *

Use a : #N~~o~~7 - DR- 13/64th drill bit and / or a 1/4" - 20 Tap
(one size above the commonly available 3/16th bit)

To drill and thread self tapping bolts in to chassis frame.

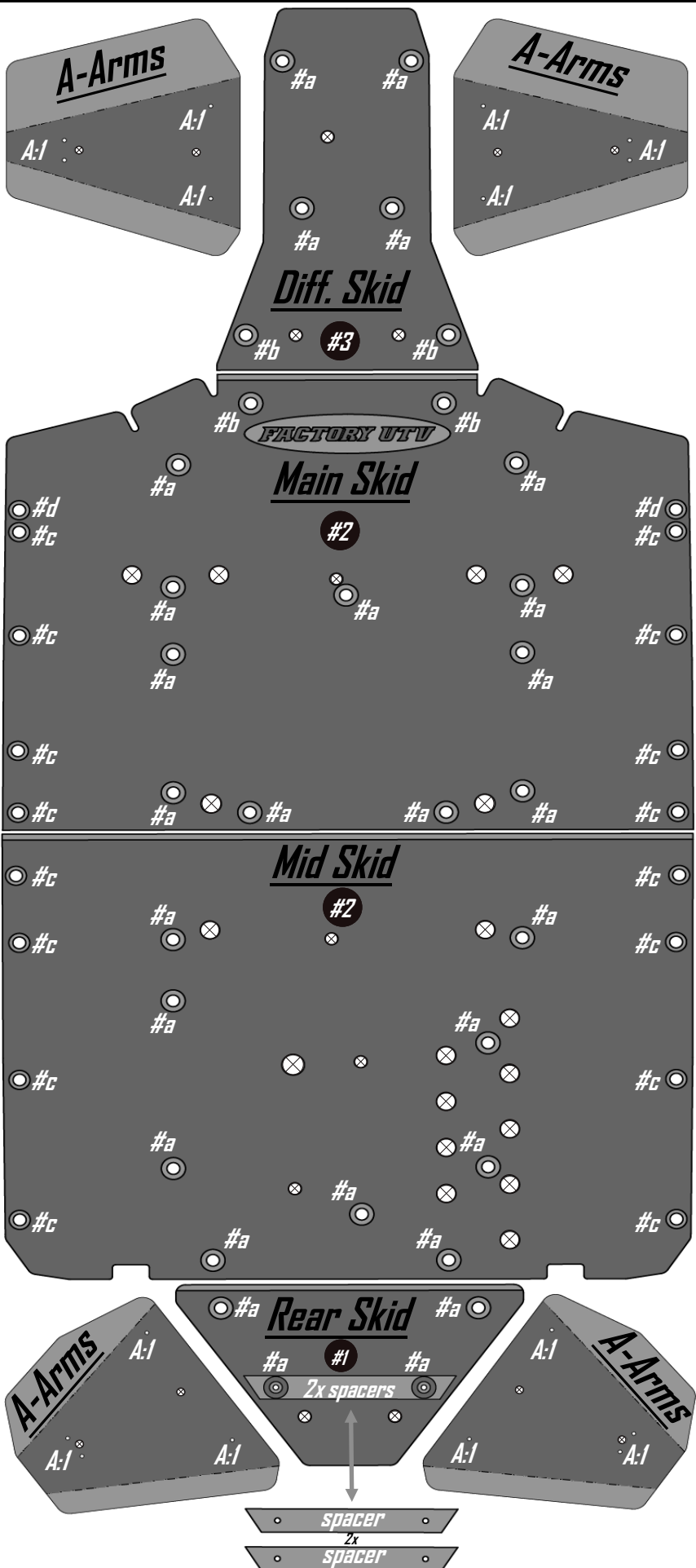
Finger Thread All Bolts Prior To Fastening Securely With Power Tools.

We strongly recommend the use of a "Thread Locking Compound" when installing any mounting hardware.

(When installation is complete , ensure all bolts are fastened securely.)

Can Am Maverick Max (2013-2014)

Re-Use All Stock Hardware.
Finger Tighten All Bolts Before, Fastening Bolts Securely.
 ⊗ = Drainage Holes
 Do Not Use For Mounting



#1 Rear Skid Plate :
 Install using : (2x) Stacked Spacers, with (4x) Stock Bolts & Washers (M6-1.0 x 20mm Thread Forming Bolts) in (#a) locations.

#2 Main & Mid Skid Plate :
 Install using : (20x) Stock Bolts & Washers (M6-1.0 x 20mm Thread Forming Bolts) in (#a) locations. Install mid skid 1st, main skid 2nd. Note tongue & groove. Using : M6- 1.0 x 40mm Flange Bolts with M6- 1.0 Flange Lock Nuts in (#b) locations. (Disregard (#c) & (#d) locations in this step)

#3 Front Diff. Skid Plate :
 Install using : (4x) Stock Bolts & Washers (M6-1.0 x 20mm Thread Forming Bolts) in (#a) locations. Using : (2x) M6- 1.0 x 40mm Flange Bolts with M6- 1.0 Flange Lock Nuts in (#b) locations.

#4 Side Mounting Holes :
 (See Drilling Instructions On Hardware Pg.2)
 Once skid plates are aligned in place, drill side mounting holes. Install : (16x) 1/4" x 20" x 3/4" Self Tapping Bolts in (#c) locations. (2x) 1/4" x 20" x 1 1/4" Self Tapping Bolts in (#d) locations,

Fasten All Bolts Securely



A-Arm Guards:
 Install : (4x) "D" clamps over a-arm tubing use : (4x) 1/4" x 20" x 1" Counter Sunk Bolts with (4x) 1/4" x 20" Ny-Lock Nuts, and (4x) Gold Washers For each A-Arm Guard.

***Ensure Clearance For Turn Radius & Vertical Travel Before Fastening Securely.**

