

Receiver Tanks

Horizontal & Vertical 30-3000 Gallons



Pneutech
Efficiency Under Pressure



Features & Benefits

Receiver Tanks

Regular 120-500 gallons
Large 660-3000 gallons



Consistent Quality

Ultra-durable base ring support is included in all models

Exceptional Reliability

These ASME certified tanks increase reliability, saves time, and decrease maintenance costs

Maximized Sustainability

Tanks are fabricated in high strength carbon steel that is finished with an exterior coating in our signature PneuTech blue color.

Receiver tanks enable the system to have increased storage capacity for compressed air at all times



Drain Valve

Excess water that may collect in the receiver tank can automatically be drained with an electronic timer* or a zero loss drain valve*.



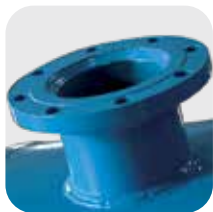
Inspection Port

The large access port makes maintenance and inspection tasks simple.**



Mounting Base Ring

All vertical receiver tanks include a base ring with mounting holes for secure installation.



ANSI Flange Connection

Large flange connections provide increased flow capabilities.**



Lifting Lug

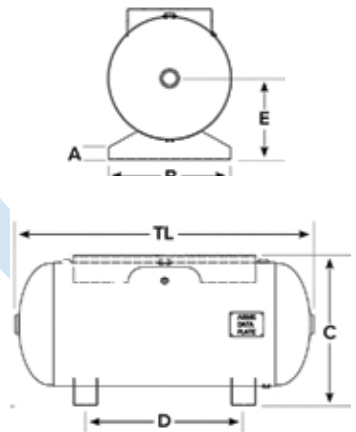
Sturdy lifting lugs on large vertical tanks allows for safe transportation and installation.**

* optional equipment

** available on the 660-3000 gallon receiver tanks

Horizontal Receiver Tanks - Exterior Enamel

	Gal	PSI	DIA	TL	A	B	C	D	E	Main Ports	Safety Port	Drain Valve Port	Wt (lbs)
9290805	30	200	16	38	2.5	19	19	18	10.5	1-1/2	1/2	1/4	79
9290825	60	200	20	48	3.25	20	24	26	13.25	2	3/4	1/2	162
9290865	80	200	20	63	3.25	20	24	36	13.25	2	1"	3/4	207
9290905	120	200	24	67	3.5	24	28	42	15.5	2	1-1/2	3/4	316
9290905-DP	120	200	24	67	3.5	24	29	42	15.5	2	1-1/2	3/4	373
9290945	200	200	30	72	4	30	34	42	19	2	2	1	473
9290945-DP	200	200	30	72	4	30	36	42	19	2	2	1	570
9290985	240	200	30	84	4	30	34	54	19	2	2	1	542
9290985-DP	240	200	30	84	4	30	36	54	19	2	2	1	622
9291025	400	165	36	89	3	36	40	52	21	3	1-1/2	1	696



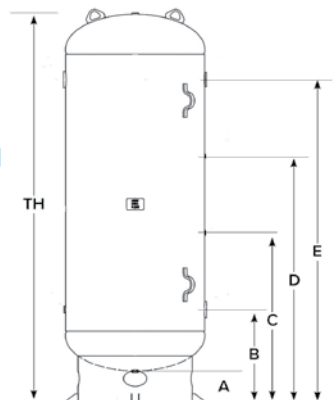
Vertical Receiver Tanks NPT Main Ports - Exterior Enamel

	Gal	PSI	DIA	TH	A	B	C	D	E	Main Ports	Safety Port	Drain Valve Port	Wt (lbs)
9290065	30	200	16	40	1-3/4"	10	n/a	n/a	31	1-1/2" NPT	1/2" NPT	1/4" NPT	79
9290105	60	200	20	50	2-1/2"	11	n/a	n/a	41	2" NPT	3/4" NPT	1/4" NPT	151
9290145	80	200	20	69	6	16	27	48	59	2" NPT	1/2" NPT	1/2" NPT	225
9290225	120	200	24	75	8	20	34	47	61	2" NPT	1" NPT	1" NPT	275
9290265	200	200	30	80	8	20	36	51	67	2" NPT	1" NPT	1" NPT	505
9290305	240	200	30	92	8	20	40	59	79	2" NPT	1" NPT	1" NPT	643
9290345	400	165	36	102	8	24	44	64	84	3" NPT	1" NPT	1" NPT	717
9290365	400	200	36	102	8	24	44	64	84	3" NPT	1" NPT	1" NPT	858
9290405	500	165	36	125	8	26	52	77	103	3" NPT	1" NPT	1" NPT	1100
9290425	500	200	36	125	8	26	52	77	103	3" NPT	1" NPT	1" NPT	1135

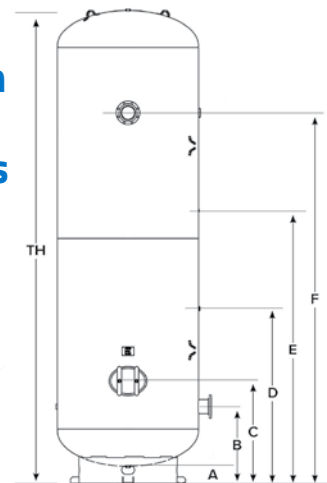
Vertical Receiver Tanks Flanged Main Ports - Exterior Enamel

	Gal	PSI	DIA	TH	A	B	C	D	E	F	Main Ports	Safety Port	Drain Valve Port	Wt (lbs)
9290445	660	150	42	125	8	27	39	52	77	102	4" FLNG	1" NPT	1" NPT	1391
9290485	1060	155	48	152	8	32	48	64	96	128	6" FLNG	1" NPT	1" NPT	1950
9290525	1550	165	54	174	8	34	46	72	110	148	6" FLNG	1-1/4" NPT	1-1/4" NPT	3037
9290565	2200	150	60	182	8	34	46	72	110	148	6" FLNG	1-1/4" NPT	1-1/4" NPT	3503
9290605	2560	150	60	228	8	34	46	90	146	202	6" FLNG	1-1/4" NPT	1-1/4" NPT	4314
9290645	3000	150	66	222	8	36	48	82	128	174	6" FLNG	1-1/4" NPT	1-1/4" NPT	5385

Vertical Tanks with NPT Main Ports



Vertical Tanks with Flanged Main Ports



Pressure Gauges



For quick visual indication of the current pressure within the receiver tank.

Part #	Description	PSI	NPT
4010060	2.5" Pressure Gauge, Back Mount, 300 PSI	300	1/4
4010100	2.5" Pressure Gauge, Lower Mount, 300 PSI	300	1/4
4010160	4" Pressure Gauge, Back Mount, 300 PSI	300	1/4
4010200	4" Pressure Gauge, Lower Mount, 300 PSI	300	1/4

Safety Valves



Prevents the safety hazard of excessive pressure build up beyond the rating of the tank.

Part #	PSI	NPT	CFM	Part #	PSI	NPT	CFM
6550100	150	1/4"	132	6550245	200	3/4"	786
6550140	200	1/4"	173	6550288	150	1"	1281
6550175	150	3/8"	132	6550340	165	1"	1399
6550190	200	3/8"	173	6550345	200	1"	1674
6550211	150	1/2"	278	6550300	150	1-1/4"	1281
6550220	200	1/2"	363	6550295	165	1-1/4"	1399
6550230	150	3/4"	601	6550290	200	1-1/4"	1674
6550320	165	3/4"	657				

Zero-Loss Condensate Drains



	Inlet NPT	Discharge NPT	Pressure Range	Temp. Range	Max HP	Max gal/hr
6540310	1/2"	3/8"	85-175 PSI	33-140°F	350	55
6540320	3/4"	1/2"	85-175 PSI	33-140°F	1000	110

Timer Drains



	Inlet NPT	Discharge NPT	Pressure Range	Temp. Range	Voltage
6540100	1/4"	1/4"	85 - 230 PSI	34-140°F	120
6540120	1/4"	1/4"	85 - 230 PSI	34-140°F	240



United States | Australia
United Kingdom | New Zealand

Pneutech USA
550 Albion Avenue
Schaumburg, IL 60193
888.966.9007
www.pneutech.com

Our Mission Statement

Using our combined industry experience, we provide knowledge, support, and superior products to compressed air distributors across the globe.

We are committed to producing positive results through being trustworthy, ethical, and accessible.

We are founded in the beliefs that through working together we can continue to transform the industry, while rising to turn challenges into opportunities.