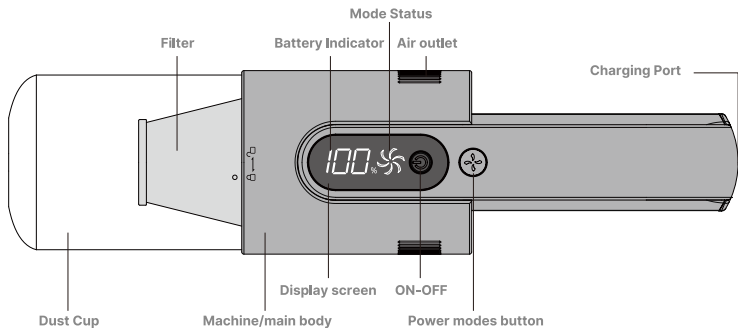
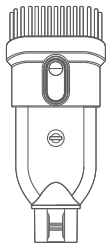


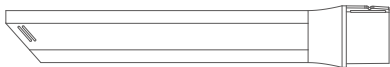
Brigii H5



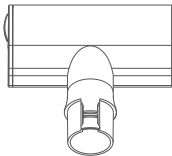
1 2 in 1 Brush nozzle



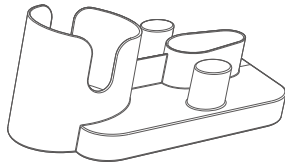
2 Crevice tool



3 Multi-surface tool

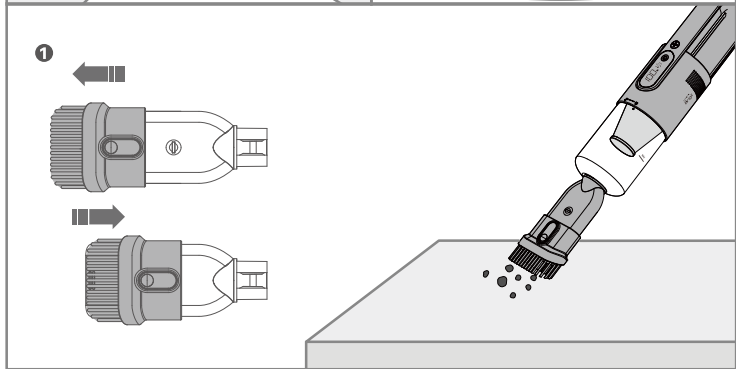
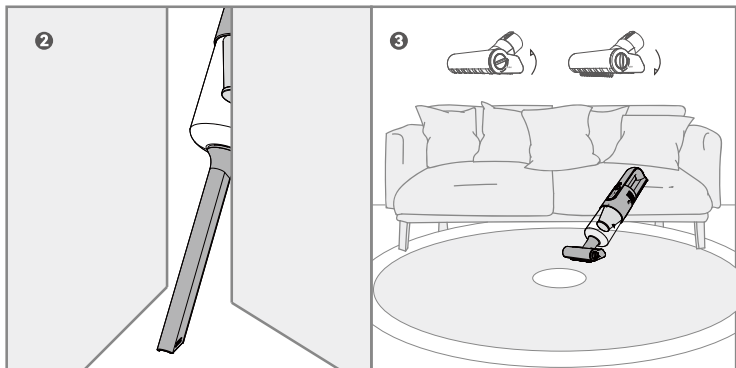


4 Base



5 Type-C






 **Notice: Do not use the vacuum while charging. Please disconnect the charging cable before using it.**

■ **Please fully charged before first use!**

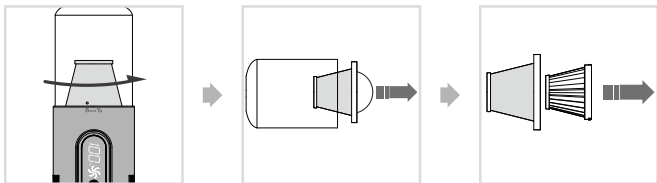
■ **Operation and display status.**

Operation	Vacuum status	Display screen status
Turn on- Press the power button for 2s	Fully charged	Battery icon display and fan blades rotating
	Battery level	Battery icon blinking and fan blades rotating with current modes
	Battery low- approximately 80 seconds remaining running time	Battery icon blink for 2 seconds and power off
Working-Press button to change the mode of the machine	Battery empty	
	Med mode(default selection mode)	Fan blades rotate slowly
	Turbo mode(The machine cannot switch to stronger mode when the battery power is low)	Fan blades rotate quickly
Power off-Press the power button	Stop working	The indicator turns off
Charging	Charging	Only battery icon blinking slowly and power increasing
	Fully Charged	The battery icon shows 100%

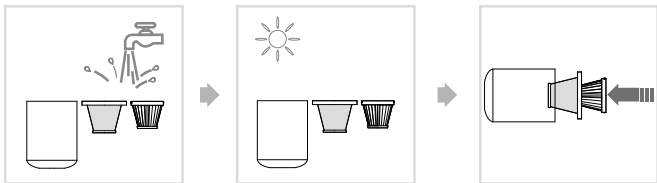
Cleaning and maintenance

 The suction will be drop if the filter is clogged, please clean the filter in time or change the filter.
A good rule of thumb is to change your high performance filter every 3 months.

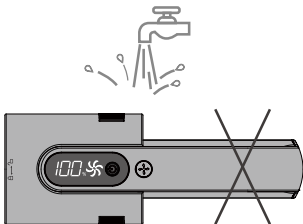
- 1 Open the dust cup by rotating in the direction of the arrow and take out the filtration parts; Remove the HEPA filter in the direction of the arrow.



- 2 Wash the filters and dust cup, air-dry them completely and reassemble the filters.



- ⚠ Do not wash the motor housing.



More languages

Deutsch 中文
Français 中文繁體
Italian 한국어
Español

