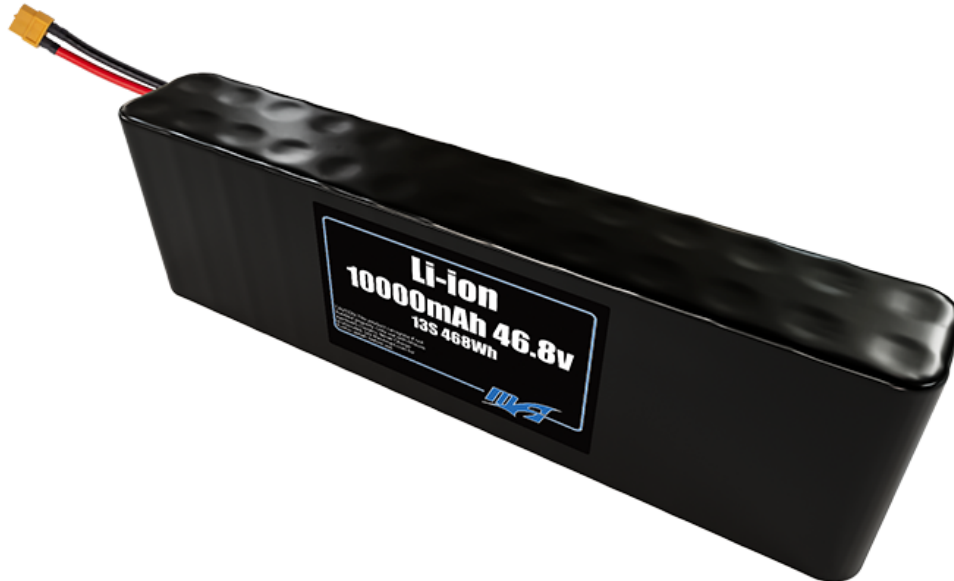




MAXAMPS LITHIUM ION BATTERY

MODEL NO: MA-10000-13s2p-Li-ion-Pack



CONSUMER APPLICATIONS

- + Robotics
- + Unmanned Aerial Systems (UAS) - Drones
- + RC vehicles

COMMERCIAL & GOVERNMENT APPLICATIONS

- + Unmanned Aerial Systems (UAS) - Drones
- + Unmanned Ground Vehicles (UGV)
- + Robotics
- + Mobile Energy Storage
- + Vehicles

TECHNICAL DATA

BATTERY DIMENSIONS - 274 x 43 x 72mm

BATTERY WEIGHT - 1872g

BATTERY CAPACITY @ 0.5C RATE - 10Ah (10000mAh)

VOLTAGE - 46.8v (NOMINAL/STORAGE) ; 32.5v (MIN) ; 54.6v (MAX)

WATT HOURS - 468Wh

ENERGY DENSITY @ Nominal Voltage - 250Wh/kg

INTERNAL IMPEDANCE (1KHZ AC TYPICAL) - 39mΩ

STANDARD CHARGE RATE - 5A (0.5C MAX)

BALANCE CHARGE RATE - 10A (1C MAX)

MAXIMUM CONTINUOUS DISCHARGE - 50A*

MAXIMUM PEAK DISCHARGE - 160A*

CYCLE LIFE - Varies per application/usage/care

CELL TYPE - UNPROTECTED (No PCB), Flat Top Positive Terminal

STORAGE TEMPERATURE: -20°C to 50°C, OPERATING TEMPERATURE: -20°C to 60°C

*Discharging at continuous and peak rates may lower life cycles.

MaxAmps is not liable for damages that may result from any information provided in or omitted from this publication, under any circumstances. The data in this document is for descriptive purposes only and is not intended to make or imply any guarantee or warranty. MaxAmps reserves the right to make adjustments to this publication at any time, without notice or obligation.

For more information on how MaxAmps can assist you with your battery power solution needs, visit us at www.MaxAmps.com, email info@maxamps.com, or call 509-473-9883.