



AXGLO E1-R-PRO ELECTRIC GOLF PUSH CART INSTRUCTION MANUAL

REGISTER ONLINE

www.axglo.com/warranty-registration

Before using the Axxlo E1-R-Pro electric golf push cart for the first time, please take a few minutes to read this Manual to ensure that you can make full use of your electric push cart.

REGISTER ONLINE

www.axxlo.com/warranty-registration

CONTENTS

- Find Your Serial Number.....01
- Remote Control.....02
- Battery Maintenance and Recommendations.....03
- Battery Charging/Maintenance.....04
- Battery Use.....05
- Unfold Your Cart06
- Safe Use of Your Cart.....07
- Safety Facilities/Protecting Your Cart.....08
- Equipment Overview.....09
- Remote Control.....10
- Use of Cart/Power Supply and Battery Level.....11
- Functions and Operation of Remote Control.....12
- Pairing Remote Control.....15
- Use of USB Charging Port/Tips.....16
- Instructions for Use of Client APP.....17
- Display Switch and Display Screen.....20
- Safe Parking.....21

Find Your Serial Number

Find Your Serial Number

The serial number of your electric push cart is located at the bottom of the slot in the main pipe. This number is required when you register for the warranty online and should be properly kept.

The number shall also be marked on the box of your electric push cart received. Please properly keep the packing box in case you need to return the product for any reason. You must also keep the proof of purchase in case your electric push cart needs to be repaired under the warranty.

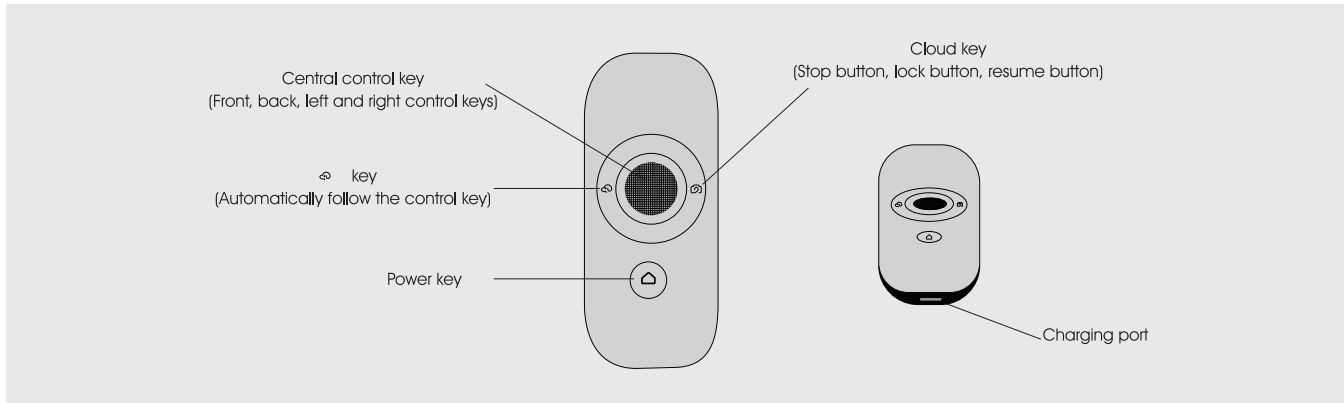
If the original packaging box is lost when the product is returned, we can send an original box with all costs to be borne by you. Please note that the battery and charger do not require the original package; but we strongly suggest retaining the original package to avoid damage in transit.

Please note down the serial number of your electric push cart here for future reference.



A horizontal row of 12 empty square boxes, intended for recording the serial number of the electric push cart.

Remote Control



- The remote control contains a rechargeable lithium battery.
- The remote control can be charged through the USB cable, and the charging port is located at the bottom of the remote control.
- The "Power" key above the charging port will change to red during charge, and change to blue when it is fully charged.
- If your remote control runs out of battery during the use of the electric push cart, you can charge the remote control with the USB port on the cart.

Please note that charging the remote control through the USB port will consume the power of the cart and long-term charging will lower the battery level.

Battery Maintenance and Recommendations

Battery Maintenance and Recommendations

- Batteries must be recharged as soon as possible after each use.
- Please ensure that only the batteries supplied by Axglo are charged with the Axglo dedicated charger. The Axglo battery charger is specially designed according to the battery manufacturer's requirements. It can be used to charge the Axglo lithium batteries only.
- The charger can only be connected to grounded sockets and only be opened and maintained by authorized personnel. Unauthorized opening will void your warranty.
- The battery must be charged on a dry surface without carpet and at a temperature of 10 C to 30 C . Charging out of this temperature range is not recommended as it will reduce the battery capacity.
- When you connect the battery with the cart, please slide the battery into the inner slot for the battery pack in the cart main pipe and push it down slightly. You will hear a "click" sound. This will ensure proper connection between the battery and the cart.



Battery Charging/Maintenance

Battery Charging

1. Make sure that the power switch of the cart is turned off or remove the battery from the cart before folding the cart (press the red switch with your hand, and push up slightly with the convex lines on both sides of the battery between the thumb and middle fingers).



2. Plug the charger into the power supply.
3. Plug the charger into the charging socket of the battery.



4. When the charger's LED indicator turns green, it means the battery is fully charged and ready to use.

Red - The battery is being charged

Green - The battery is fully charged and ready to be disconnected



5. The charging process takes about 6 hours.
(Please note that the charging process takes about 6 hours depending on the depth of discharge, the first few charges may take a longer time).
6. After charging, please disconnect the charger from the main power supply, and then disconnect the charger from the battery.

Battery Maintenance

- Try to not wet the battery (for example, do not immerse the battery in water, prevent the cart from falling into a deep pit, and do not wash the cart before the battery is removed).
- Dropping the battery may cause damage to the inside of the battery
- Do not collide batteries with other objects.
- Remove dirt with a damp cloth.

Battery Use

Battery Use

Recommendations for battery dormancy in winter

Due to various reasons, your battery cannot be used for a long time. For example, in the 3 months in winter, it is recommended to store the battery after half charge. For this end, you only need to use the battery as usual during a golf match and charge it for 3 hours after the match. Recharge the battery (full charge) before using it again. We all know that leaving the push cart idle for a long

Battery management system (BMS)

The Axxglo battery comes with a comprehensive battery management system (BMS) to protect the battery from overuse, high current, deep discharge, and overcharge. When the battery is delivered, there may be no output because the BMS is designed to maximize its safety during transportation. Make sure the battery is fully charged before connecting to your cart, as this will activate the BMS and effectively "switch on" the battery. During deep discharge or long-term storage, the BMS sometimes shuts down the battery. The battery will turn on again when fully charged.

time is not always planned in advance, but it is a good practice to follow the above recommendations when you do not use the battery for a period of time. Following this procedure will extend the life of the battery. Be sure to disconnect the charger from the battery at all times after charging.

The Axxglo cart is designed to work with a BMS system equipped with the battery, and the voltage is also synchronized to work with the battery. In any case, if the voltage of the battery is below the minimum warning voltage on the cart, the BMS may disable the battery to protect it. If this happens, recharge your battery. Please note that the battery voltage drops rapidly at the end of the cycle, so it is not recommended to make too many holes as the BMS will turn off the battery for protection.

Unfold Your Cart

Folding



Release the lower lock trigger; grab and hold the handle with your left hand; and then release the upper lock trigger, fold the cart in the direction of the arrows shown below.



Place your right foot in front of the front wheel; grab and hold the handle with your left hand; push forward to fold the cart; lock the upper and lower lock triggers.



Unfolding

Pull both rear wheels of the electric cart outwards for about 3 cm



Release the upper and lower lock triggers, step and station the front fork joint with your right foot, grab the handle with your left hand and pull your cart backward to unfold it.



Lock the upper and lower lock triggers.



Safe Use of Your Cart

Safe Use of Your Cart

The following does not include all possible scenarios. Caution should be top priority.

When using and operating the cart:

- Your Axglo cart is designed to transport golf bags and clubs. Using the cart for other reasons may cause damage to the cart and cause injury to the users.
- Please follow the instructions to fold and unfold the cart to avoid damage.
- Maximum load capacity: 20kg. Please do not exceed the load capacity during use. Please do not use any accessories not designed and manufactured by Axglo.
- Do not transport any other equipment.
- The cart is not designed to transport people.
- When going uphill, do not try to assist the cart by pushing it with your hands.
- Do not direct the cart at other people or other cart with the remote control.
- Submerging the cart in water (such as in a lake) will cause damage to the cart.
- Do not operate the cart if you are intoxicated.
- Before transportation, the battery must be disconnected from the cart.
- When using the cart in a limited space (such as a parking lot) or near water (such as crossing a bridge), it is recommended to use the manual push mode to ensure that you can control the cart.
- Do not let the cart run out of your sight. Always maintain proper attention and control.
- When the power is turned off, the cart will slide if it is parked on a slope. When parking on a slope, do not turn off the power and remember to press the stop button.
- Axglo will not be responsible for any damage or injury caused by improper use.

Safety Facilities/Protecting Your Cart

Safety functions:

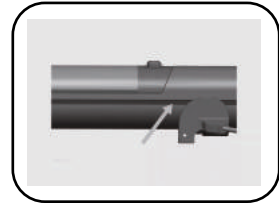
Safety cut-off function: When the cart is operated by remote control, if no command is sent to the cart (press any keys) for more than 180 seconds, the cart will automatically cut off the power of the motor; if the cart travels beyond the remote control range, the cart will also automatically cut off the power of the motor (the remote control will send out a vibrating beep alarm).

To restart, you just need to press the "Start/Stop" key to resume the normal use of the cart.

Although your Electric Push Cart is weatherproof, please follow the following simple rules to help protect your cart:

- Do not store your cart in the open air.
- When it rains heavily, protect the cart from the rain and try to cover it with an umbrella.
- Wipe off any water on the cart before storing.
- Do not use a high-pressure cleaning machine to clean the cart. To prevent water from damaging the cart, please use a soft dry towel to dry it.

- When the cart is running, please avoid the nearby areas where high-pressure air hoses are used.
- The cart is designed to require only simple maintenance. However, we recommend that your cart be checked regularly to ensure that:
 - No excess mud or dirt accumulates.
 - The front wheel is unclogged and can turn freely.
 - The main folding track is kept clean and well lubricated. Only original parts can be used when repairing the cart.
- After each use of the golf push cart, please use water to rinse the bottom frame to clean any excess mud, dirt or grass left on the cart. Please make sure the slide block channels are clear from any dirt or mud as this can cause the slider block to jam. If jammed, this will cause restriction when folding down the cart and also potentially damaging the golf push cart if extra force is exerted. Regular cleaning and lubrication of the slider block will be needed for the golf push cart to perform at its best.



Equipment Overview

Axglo E1-R-Pro Equipment Overview



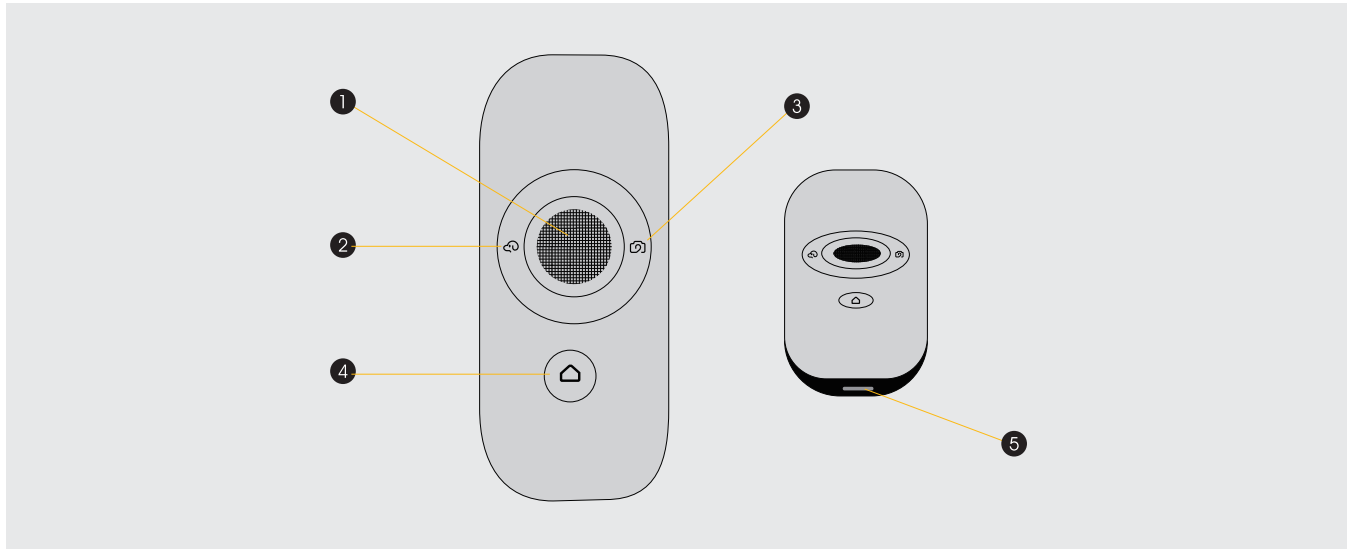
- 1. Handle
- 2. Umbrella holder
- 3. Bag holder
- 4. Beverage holder
- 5. Power switch
- 6. Riser pipe
- 7. Left motor
- 8. Right motor
- 9. Left rear wheel



- 10. Right rear wheel
- 11. Battery release button
- 12. Main control board
- 13. Battery charging port
- 14. Battery
- 15. Front fork joint
- 16. Radar detector
- 17. Left front wheel
- 18. Co-control board
- 19. Right front wheel
- 20. Bluetooth display board
- 21. Infrared probe
- 22. Ultrasonic board
- 23. Lower lock trigger
- 24. Upper lock trigger
- 25. USB port of cart
- 26. Slot of cart
- 27. Battery connector



Remote Control



1. Front, rear, left and right control keys (central)
2. ↶ key: Automatically follow the control key
3. Cloud key: Stop key, lock key and restore key

4. Arrow key: Power key
5. Charging port

Use of Cart/Power Supply and Battery Level

Use of Cart/Power Supply and Battery Level

Use of Axglo E1-R-Pro Electric Push Cart

When you use the cart for the first time, we recommend that you use it on an open golf green. The speed and steering characteristics of the cart vary depending on the road surface.

On smooth surfaces and on different greens, the weight of the golf bag can affect the cart speed and steering.

Power supply and battery level



There is a set of 5 LED indicators on the display.

After loading the battery to the cart, turn on the power and the set of indicators will be on.

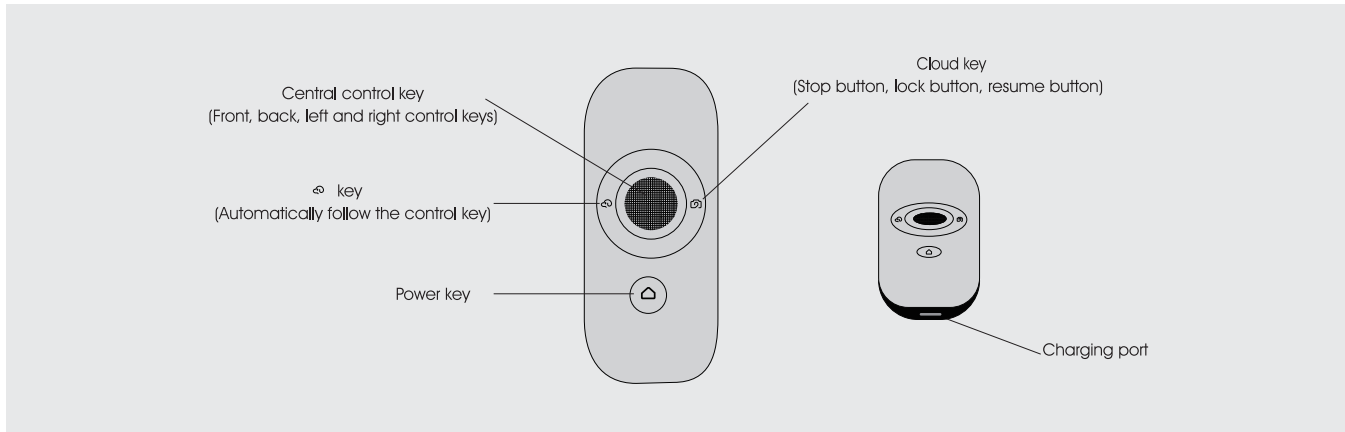
If four LED indicators on the right are white and one is red, it means that the cart is fully charged. The number of indicators indicates the battery level (the specific percentage of the total battery level can be seen in the mobile APP). When the LED display only shows the red indicator, it reminds you that the battery of the cart needs to be charged (with battery level of about 25%), and the cart can run for about 1 hour (the range is about 5Km). When the display only shows

the red indicator and the battery level drops to 15% (refer to the mobile APP for the percentage of battery level), the power indicator box will flash on the display, and the cart will have low sensitivity and speed, especially when turning. When the display only shows the red indicator and the battery level drops to 10%, the remote control will intermittently send out an alarm through vibration, and the cart will have lower sensitivity and speed and become out of control, especially when turning. When the battery level drops to 5%, the remote control will vibrate at a shorter interval, and the cart will have even obviously lower sensitivity and speed, especially when turning.

The cart is designed to protect the battery from being completely discharged. If the battery level drops too low, the cart will cut off the power for the motor.



Functions and Operation of Remote Control



1、 Power key (arrow shape)

When in use, press this key once and the LED backlight will be blue, it means that the remote control has started normal operation; if the LED indicator is off, it means that the remote control is powered off; if the LED indicator is red, it means the the remote control has low battery and needs to be charged. During the use of the cart, the remote control can be charged through the USB port of the cart. In other scenarios, Insert the USB cable into the (specification) interface of the power adapter and connect the adapter to the power socket.



Functions and Operation of Remote Control

2. Central control key ("O" shaped, frosted surface)

a. Manual driving mode: The cart running indicator on the display will be on.



Gently press and hold the key with your finger, and push it upward to enter manual driving mode; release the key and the cart will immediately stop movement.

Gently press and hold the key with your finger, and push it upper left to enter "turning left" mode; release the key and the cart will immediately stop movement.

Gently press and hold the key with your finger, and push it upper right to enter "turning right" mode; release the key and the cart will immediately stop movement.

Gently press and hold the key with your finger, and push it downward to enter manual reverse mode; release the key and the cart will immediately stop movement.

In general, it is not recommended to use the reverse mode. If it is used, you should operate the cart at a lower speed.

b. Auto cruise mode: The cart running indicator on the display will be on.



Press and hold this key with your finger and push it upward quickly twice to enter auto cruise forward mode. At this time, your finger must leave the key. Gently push the key downward once, and the cart will return to manual driving mode.

Press and hold this key with your finger and push it to the left to enter the "turning left" function; release the key and the cart will return to the auto cruise mode.

Press and hold this key with your finger and push it to the right to enter the "turning right" function; release the key and the cart will return to the auto cruise mode.


Press and hold this key with your finger and push it downward quickly twice to enter auto cruise reverse mode. At this time, your finger must leave the key. Gently push the key upward once, and the cart will return to manual driving mode.

In general, it is not recommended to use the reverse mode. If it is used, you should operate the cart at a lower speed.

Functions and Operation of Remote Control

3、Automatically follow the control key ( key)



Gently press this key once to enable the auto-follow mode and the  pattern on the display will light up. In auto-follow mode, the radar detector at the front of the electric cart (marked on the attached figure of whole cart) will automatically track the remote control at the set distance; there should be no obstacle (including human) between the transceiver on the top of the remote control and radar detector, and the remote control should be kept upright. Otherwise, the use effect will be affected. Press the key again to exit the function.

4、cloud key



This key is the "lock, unlock and stop" key (after turning on the power switch of electric cart and remote control, the display on the cart shows "The cart is unlock and you can enter manual operation"). Gently press the right key on the remote control, and the display will show the lock sign (at this time, the cart cannot be operated manually). Gently press the right key twice and the lock sign on the display will disappear (at this time, the cart can be operated manually or by remote control). When parking on a slope, please do not turn off the power and remember to press this key. At this time, the lock sign on the display will light up. Turning off the power would disable the electric braking system of the cart.

5、 If the display shows a "red radar" sign, it means that the cart detects an obstacle ahead, and it will stop.

Pairing Remote Control

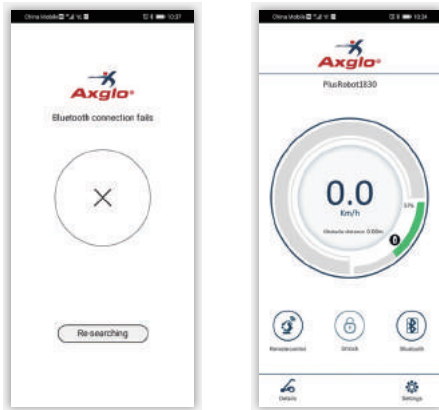
Pairing Remote Control

1. Scan the QR code to download the APP (the QR codes for iOS, Android and Google are attached)



2. Enable the Bluetooth of your mobile phone
3. Turn on the cart
4. Enter the APP

Press "Search Again" to enter the search screen



Press "Settings" to enter "Remote Control Pairing" and press the "»" icon (there will be no change on the mobile phone screen)

Use two fingers to gently press and hold the "↶" "↷" icon key and "Stop" key on the remote control.



Use another finger to press and hold the power switch for about 3s. Do not release your fingers until the "LED" indicator turns blue and the remote control vibrates quickly. When the Bluetooth icon on the display flashes, it indicates that the pairing is completed and the remote control can be used.



Use of USB Charging Port/Tips

Use of USB charging port

- Your cart has a USB charging port that can charge your GPS device while you are using the cart. If your remote control needs to be charged, it can also be used to charge the remote control.
- Insert the USB cable into the charging port at the bottom of the remote control.
- The device will continue to be charged as long as the cable and the battery are connected.
- It is important to note that the charging speed will be slower than the AC adaptor, and it is similar to charging via a USB port of PC.
- The USB charger takes power from the cart's battery, and continuous charging will lower the battery level. When the battery capacity reaches a preset level, the cart will close the USB port.



Tips

- Be sure to press the lock key when the cart is unattended.
- The cart is specially designed for manicured lawns and designated trails. Do not attempt to steer the cart through a sand pit or deep puddle. Do not attempt to push the cart down steps or high curbs.
- Do not overload your golf bag, as the extra weight increases the drain on battery level and can also affect the cart's speed and steering characteristics. Very heavy bags can also add unnecessary load to the motor. Keeping the cart travelling on the fairways helps save battery power, while driving the cart on grass and rough terrain can increase battery consumption.

Instructions for Use of Client APP

Instructions for Use of Client APP

1、 Cart settings and mobile APP settings

Figure: Scan the QR code to download the APP "Axlgo" on Android, iOS and Google

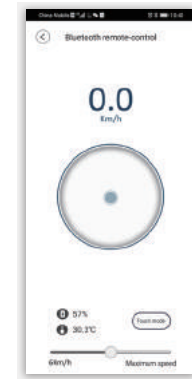


- a. Enable the Bluetooth of your mobile phone, open the APP on mobile phone, press "Search Again" and you will enter the "Connecting Bluetooth" screen; after connecting the cart's Bluetooth (the Bluetooth icon on the display will flash continuously), you can enter the "Bluetooth Remote Control", "Lock", "Bluetooth Connection", "Details" and "Settings" screens.

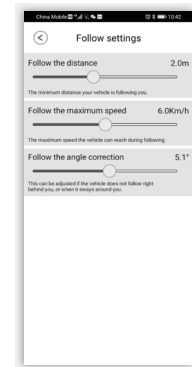


Instructions for Use of Client APP

b. Press "Bluetooth Remote Control" to enter the speed adjustment screen, which displays "0.0km/h" on the top, the battery level of the cart and local temperature on the lower left; touch remote control and the max speed set before leaving the factory,



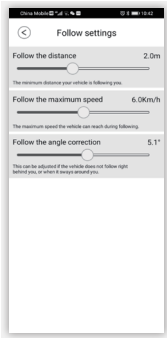
c. Touch the "small dot" on the horizontal line below with your finger and slide it to the right to increase the speed or to the left to lower the speed.



Instructions for Use of Client APP

2. Settings

Press the "Settings" on the lower right of the mobile APP to enter the screen.

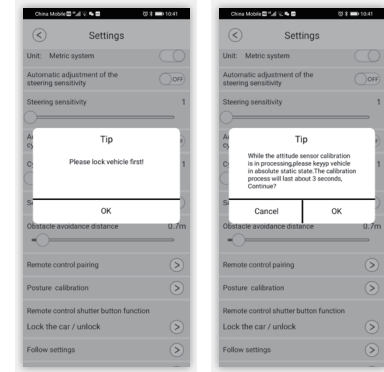


The obstacle avoidance distance can be set between 0.5m and 2.5m, which has been set to 2m before leaving the factory. For the sake of safety, it is recommended that the distance shall be set between 1.5m and 2.0m, and the anti-collision function can be turned on or off.

The "max speed of remote control and auto-follow" can be set between 2.0km/h and 10.0km/h, which has been set to 6 before leaving the factory. It is recommended to set the value between 6.0km/h and 8.0km/h.

3. Attitude calibration

If the cart has been used for a long time, and there is a slight deviation in travelling or steering, you can press the attitude calibration "»»" icon to enter the screen, and a prompt of "The cart needs to be



locked before sensor calibration, do you want to continue?" will be displayed. Press "OK" and a prompt of "Please keep the cart absolutely still during the calibration of the attitude sensor. The calibration process will take about 3 seconds, do you want to continue?" will be displayed. Press "OK" and wait for 3s until the lock icon on the cart display disappears, and the calibration is completed before it can be used normally.

Display Switch and Display Screen



The power switch of the cart is located on the lower right of the display screen. Press the white part in the middle of the black plastic parts to turn on the power; press it again to turn off the power, and press it twice to adjust the cart speed to 5km/h or 6km/h, which can be determined according to the use requirements.

If there is no operation within 180s after turning on the cart, the cart will be automatically turned off.

After turning on the cart, the display will show the "battery level" icon, flashing "Bluetooth" icon and "0.0" running speed icon.

- a. The battery level icon indicates the battery level.
- b. The flashing Bluetooth icon indicates that it has been connected to the Bluetooth of your remote control or mobile phone.
- c. "0.0" speed icon will change from "0.0km/h" to "0.1km/h" when the cart is started, and the speed will directly rise to the set speed value (5-6).

Safe Parking

When parking on a slope, please do not turn off the power and remember to press the stop key (cloud key). At this time, the lock icon on the display will light up. Turning off the power would disable the electric braking system of the cart.