

# Soundchief CV5 Professional Sound Cart (CT-SDCF-CV5)

## Assembly Manual



### What's In The Box

Please inspect the contents of your shipped package to ensure you have received everything that is listed below.



Top Section



Bottom Section



Sliding Tray



2 x Wheels (Size: 3")



2 x Handles



2 x Wheels (Size: 16")



Wheel Excal



Rod



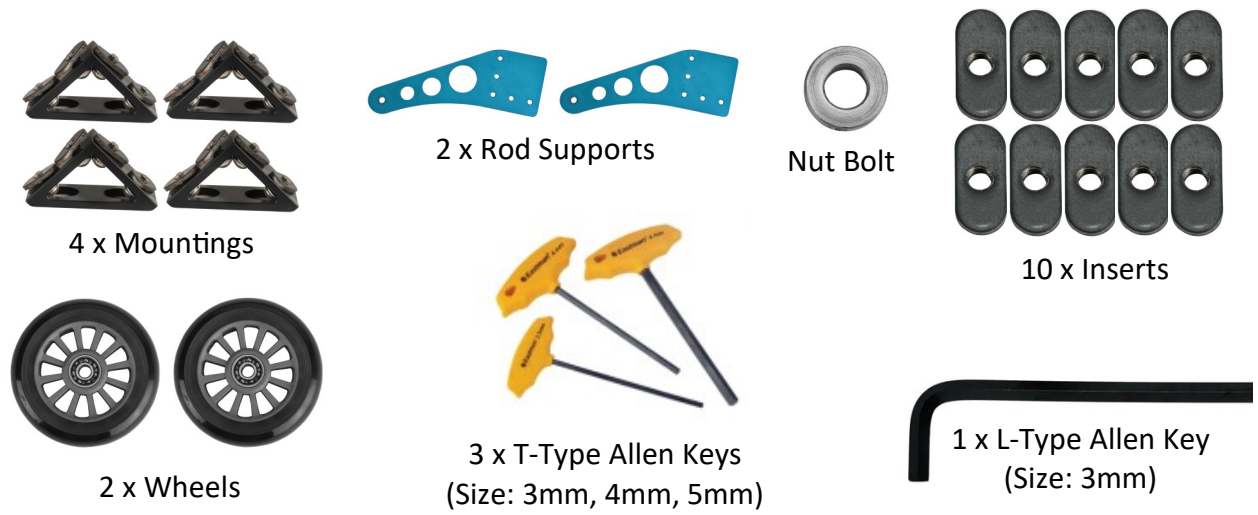
2 x mounting Channels



4 x Rod Clamps

All rights reserved.

No part of this document may be reproduced, stored in a retrieval system, or transmitted by any form or by any means, electronic, mechanical, photo-copying, recording, or otherwise, except as may be expressly permitted by the applicable copyright statutes or in writing by the Publisher.



## ■ Soundchief CV5 Sound Cart Setup

### Assembling of wheels

- Insert the two inserts at the bottom section of the Soundchief CV5, as shown in the image.



- Insert the wheel (Size:3") and properly match the inserts with the threads of the wheel and then insert the bolt.



- Properly tighten the bolt using the 4mm Allen key. Repeat the same process to insert all the bolts.



- To insert the second wheel, repeat the same process.

**NOTE:** The Cart rolls incredibly smooth and silent with reliable and lightweight two front swivel castor wheels and two rear pneumatic wheels .

- Push the brake wheel downwards and then properly lock it.

**NOTE:** The front wheels come with specially designed foot brakes to keep it completely steady, stable, and secure for reliable parking, even when you can not be close to the Cart.

### Assembling of Handles

- Insert the handle at the base of the bottom section and then tighten it properly using the 3/16" Allen key.

**NOTE:** The cart has a handle on the bottom that allows it to lay back for easy transportation.

### Assembling of Mounting Channels

- Insert the mounting channels in the bottom section.



- Properly tighten all the bolts using the 4mm Allen key, as shown in the image.



- To insert the second mounting channel, repeat the same process.



### Assembling of Wheel Excel

- Insert the wheel excel to the bottom of the mounting channel.



- Wheel excel has now been properly inserted at the bottom.



### Assembling of Wheels

- After inserting the wheel sank, insert the wheel.



- Then insert the nut and properly tighten it using the 4mm Allen key.



- To insert the second wheel, repeat the same process.

**NOTE:** These wheels ensure that the entire setup remains light, smooth, and robust .



## ■ Sliding Tray Setup

- Properly insert the sliding tray in the mounting channel.



- Properly tighten the bolts and stopper using the Allen key, as shown in the image.

**NOTE:** Stopper is helpful to prevent sliding tray from dent.



**NOTE:** The cart has a refined aluminum body outfitted with toughened glass that makes no compromise in terms of features, looks, and functionality.



**NOTE:** You can adjust the sliding tray to your requirement making the cart even more convenient for you.



**NOTE:** You can adjust the sliding tray to your desired height making the cart even more convenient for you.



## ■ Top Section Setup

- Properly insert the top section.
- Properly tighten the top and bottom bolts using the Allen key.
- Now insert the handle in the middle section and properly tighten it using the Allen key.



**NOTE:** The whole Cart is designed in the channel version so that you can fix the shelves wherever you want.

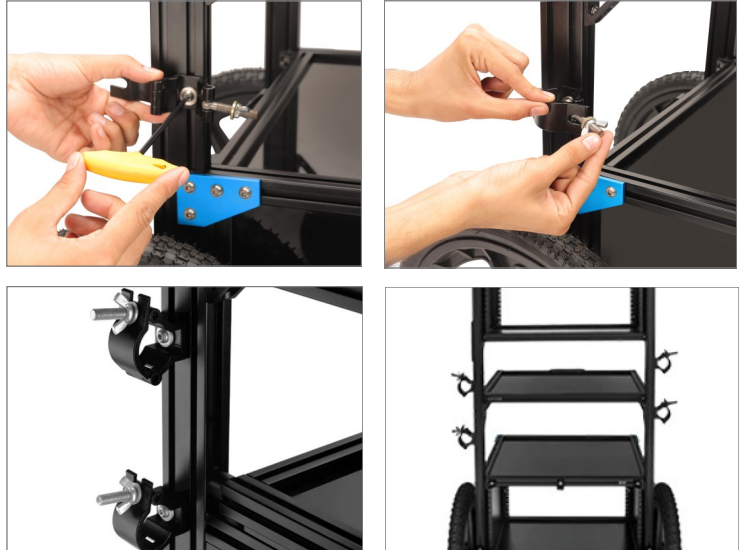


## Assembling of Clamps

- Loosen the clamp's knob and open it.
- Insert the clamp in the mounting channels.  
**NOTE:** Clamp ki position apni requirement ke according top/bottom me set krain.



- Properly tighten the bolt of the clamp using the Allen key and then close the clamp.
- To insert the other clamps, repeat the same process.



## ■ Rod Support Setup

Insert the three inserts into one side of the mounting channels.



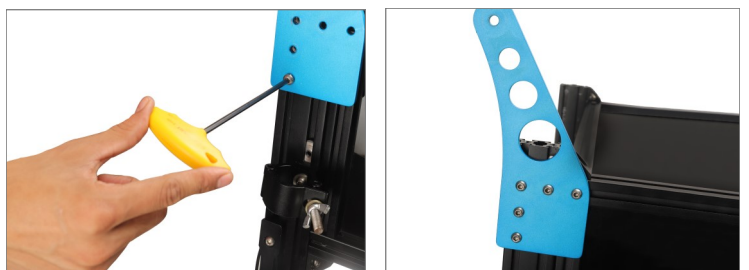
- And insert one insert to the other side, as shown in the image.



- Match the Rod Support's holes to the holes of the inserts and then insert the bolts.



- Properly tighten the bolts using the Allen key.



- Mount the end plate on the mounting channel and insert the bolt.



- Properly tighten both bolts using the Allen key.



- To insert the second-rod support, repeat the same process.

**NOTE:** You can effortlessly roll the Cart to any SUV hatchback or truck and even tilt it back to roll into place safely for transportation.



## Assembling of Wheels

- Remove bolts and washers from both sides of the rod, as shown in the image.

**NOTE:** The cart has a boom pole holder and C-Stand/antenna mast mount, which add more convenience to the cart.



- Insert the rod into the rod support.

**NOTE:**



- Now properly insert the wheel and then insert the bolt and washer.





- Properly tighten the bolt using the Allen key. To insert the second wheel, repeat the same process.

**NOTE:** The Cart also has top wheels and a that allows it to lay back for easy transportation.



**NOTE: 1.** Set the position of the rod support upward or backward, according to your requirements.

**2.** You can effortlessly roll the Cart to any SUV hatchback or truck and even tilt it back to roll into place safely for transportation.



## YOUR PROAIM SOUNDCHIEF CV5 PROFESSIONAL SOUND CART ALL DRESSED UP AND READY TO GO!



(SHOWN WITH OPTIONAL ACCESSORIES)

**Warranty:** We offer one year warranty for our products from date of purchase. Within this period of time, we will repair it without charge for labor or parts. Warranty doesn't cover transportation costs nor does it cover a product subjected to misuse or accidental damage. Warranty repairs are subjected to inspection and evaluation by us.

**Liability:** We are not liable for damage caused by products that we do not supply or from mishandling in transit, accident, misuse, neglect, lack of care of the product, or service by anyone other than our company.

**Contact Us:** In case of any kind of dissatisfaction, please Contact us immediately and we promise our utmost support and care until you use our product.