



The Genuine Company

Ingredients for gelato and pastry



4518430G  
Granfutta maracuja  
Passion fruit  
100% fruit paste  
5 kg



4514219G  
Variegato Mama que buena  
Cocoa, hazelnut & wafer  
5 kg



4514717G  
Fiordilimone  
Lemon zest variegate  
3 kg



4514700G  
Funky malty  
Maltisera flavour  
Use as a paste & variegate  
6 kg



4518431G  
Granfutta pera  
Pear  
100% fruit paste  
5 kg



4514542G  
Pesto di mandorla paste  
100% pure almond  
4 kg



4514719G  
Fiordizenzero  
Ginger variegate  
3 kg



4514750G  
Cookies lemon meriengue  
Use as a paste & variegate  
5.5 kg





4508420G  
Black gourmet 500  
Charcoal  
1.25 kg



4502584G  
Base alba completa  
\*Just add milk  
1.2 kg



4514698G  
Variegato beso doble  
Hazelnut, cocoa & dark chocolate  
4.3 kg



4514802G  
Kit pistachio ciuri ciuri  
Pistachio paste, pistachio variegate &  
roasted pistachio grains  
6.8 kg



4514736G  
Variegata banoffeee  
Banana & toffee  
3 kg



4514727G  
Variegata carrot cake  
5 kg



4514723G  
Quello crunchy (fudge line)  
Caramel cream & rice crisps  
2.3 kg



4514724G  
Quell'altra crunchy (fudge line)  
White chocolate cream & rice crisps  
2.3 kg

## PRODUCTION SPATULAS

Polypropylene material



45511G  
Production Spatula white, rigid  
35 cm



451013  
Spatogel white, rigid handle & soft rubber tip  
35 cm

## CRISTAL SPATULA

Stainless steel 18/10 & transparent acrylic (PET)  
Clear colour spatulas  
26 cm



4574BLU  
Cristal Spatula Blue



4574BLK  
Cristal Spatula Black



4574YEL  
Cristal Spatula Yellow



4574TRP  
Cristal Spatula Transparent



4574RED  
Cristal Spatula Red



4574GRN  
Cristal Spatula Green

## GELATO SCOOP



4570BL  
Blue  
51 x 230 mm



4570RD  
Red  
51 x 230 mm

## ACRYLIC FLIP MARKERS & HOLDER CARDS FLAVOUR LABELS



45370  
8 x 4 x 6 cm  
Interlocking closure



45382  
6 x 23 cm  
To be plunged into the gelato

## SPOON HOLDERS



4500604  
Red Spoon Case  
18.5 x 26x 20 cm



4501407  
Blue Spoon Case  
19 x 26.5 x 21 cm



45253  
Plexi spoon  
& straws holder  
Closable lid  
15 x 17 x 26 cm



45254  
Plexi spoon holder  
Closable lid  
15 x 17 x 15 cm

---

## DISPOSABLE BOWL & LID



45894  
Disposable gelato bowl  
20 x 24 cm



45894L  
Lid for disposable  
gelato bowl  
20 cm

---

## JUGS & TRAYS



45964  
Jug with lid  
Open handle  
Graduated scale  
5 lt



45903  
Stainless steel  
Gelato display tray  
36 x 25 x 20 cm

## CONE HOLDER



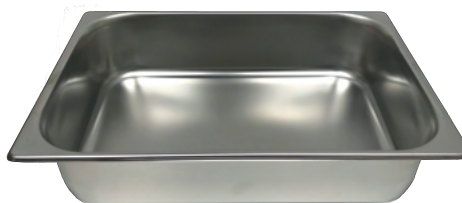
**45154**  
Stainless Steel  
3 Holes stand cone holder  
19.5 x 16 x 11 cm

## GELATO PANS

Stainless steel



**45900**  
Narrow shallow  
Capacity 5 lt  
360 x 16.5 x 12 cm



**45901**  
Wide  
Capacity 5 lt  
360 x 250 x 80 cm

## CARAPINA LID & BOWL



**45897**  
Carapina lid  
for gelato bowl  
20 cm



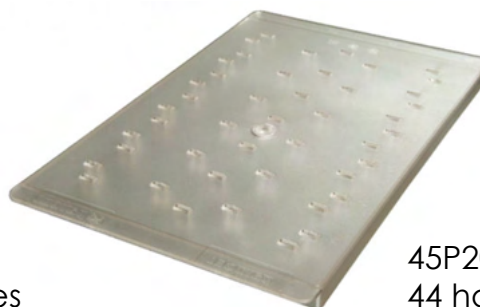
**45896**  
Stainless steel  
carapina bowl  
Capacity 7 lt  
20 x 25 cm

## TRAY DISPLAY

Polycarbonate transparent displays for popsicles



**45800**  
Capacity 28 popsicles  
36 X 25 X 5.5 cm



**45P203**  
44 holes  
36 X 23.5 X 1.85 cm



## SPECIALTY ITALIAN WAFFLE CONES

*One of the unique features is the longer and more sophisticated shape with a narrow top, typically seen in Italy*



43304  
Gluten Free Cone  
200/cs  
14.5 x 4.5 cm



43305  
Gelato waffle  
Lunga Slim  
200/cs  
16.5 x 4.5 cm



43306  
Gelato waffle  
Chocolate  
200/cs  
16.5 x 4.5 cm



43307  
Gelato waffle  
Charcoal  
200/cs  
16.5 x 4.5 cm



**Gelato**  
**COOLBOX**

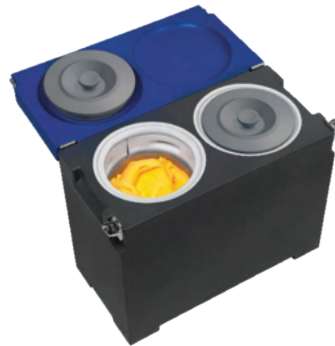


Four Wheels  
Anti-rotation System



45GCT  
BLUE ANTHRACITE  
GELATO COOLBOX TUBS

45GCP  
BLUE ANTHRACITE  
GELATO COOLBOX PANS



45GCTC  
CART FOR  
GELATO COOLBOX TUBS

45GCP  
CART FOR  
GELATO COOLBOX PANS



**ARTISAN GELATO GOES OUT OF THE  
GELATO SHOP WITH GELATO COOLBOX  
BY IFI: NEW IDEAS FOR  
ARTISAN GELATO-MAKERS' BUSINESS!**

With GELATO COOLBOX, IFI suggests to artisan gelato-makers and chain stores new ideas and opportunities to improve their business and their revenues and to promote their image.

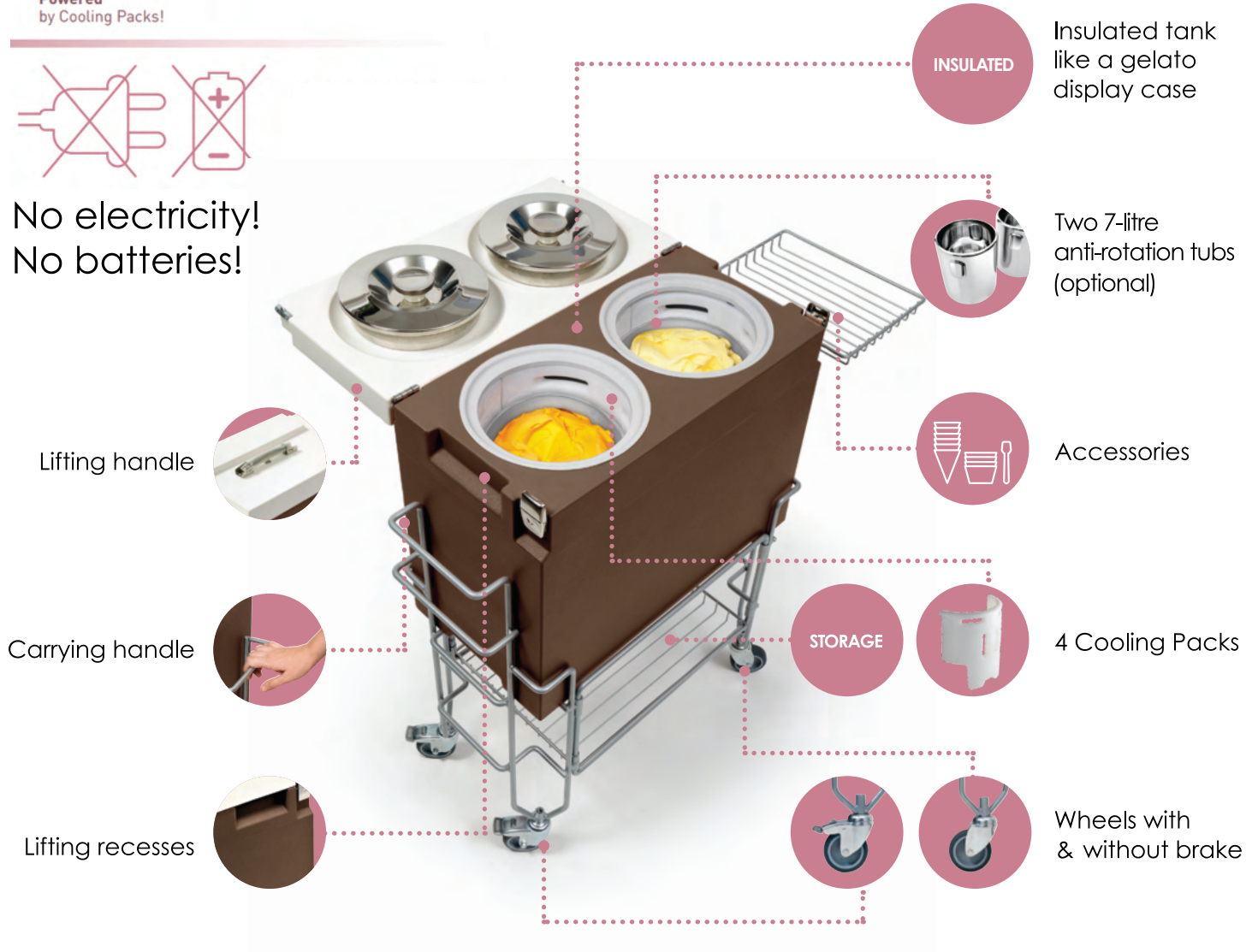
**Technical specifications:**

- Isothermal container made with rota-moulded polyethylene; insulated container with low density injected polyurethane (40 kg/mc)
- Cooling through semicircular eutectic containers
- Lengths: 600mm (23.62")
- Depth: 300mm (11.81")
- Height: 514mm (20.24")
- Weight : 18Kg (39 LB)

Powered  
by Cooling Packs!



No electricity!  
No batteries!



Lifting handle

Carrying handle

Lifting recesses

INSULATED

Insulated tank  
like a gelato  
display case

Two 7-litre  
anti-rotation tubs  
(optional)

Accessories

4 Cooling Packs

STORAGE

Wheels with  
& without brake

CART OPTIONAL



FOR 1

FOR 2

With **GELATO COOLBOX**, artisan gelato goes out of gelato shop inside a professional suitcase:

- with 2 anti-rotation tubs
- insulated like a gelato display case, with 4 hours of perfect gelato storage + 2 hours of service
- without need of electric power
- inside a Smart's tank
- can be carried by hand or on wheeled cart

In order to bring gelato to:  
Parties, inaugurations, indoor and outdoor events, vernissage, meetings, sports events, poolside, restaurants, showcooking events and anywhere your fantasy may suggest.



# SAM80

Panorama® tubs



Four Wheels  
Anti-rotation System



1631  
64.31"

SAM80 The professional gelato display case with front glass at 90 degrees, only one meter deep.

A front covering that uses innovative materials together with LCD technology that shows the operating temperature of the display case on the front.

An original aesthetic possibility, but also an interaction and communication tool of your professionalism in artisan gelato care and preservation.

6 different possible angles for the display top. LED lighting. Easy routine maintenance thanks to the filter that can be easily removed from the operator side.

It is available in **18 holes**.

# BIT

Panorama® tubs



Four Wheels  
Anti-rotation System

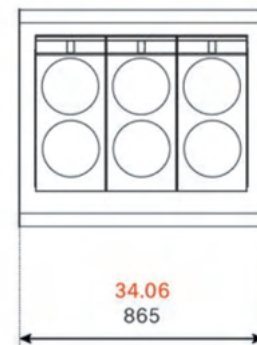
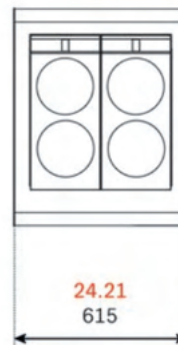


615  
24.21"



865  
34.06"

Top view



■ = inch  
■ = mm

Bit Panorama® is the smallest and most basic free-standing unit in the sector of interfaces for artisanal gelato.

The ease of installation of Bit expands opportunities for gelato makers who intend to bring their product in different contexts from your sales space for creative entrepreneurs who aim to expand their offerings.

The forms of the window are clean and simplified. This, together with the choice of white color, improves the adaptability of the object to different environments.

It is available in **4 and 6 holes**.

# PANORAMA®

Panorama® tubs gelato counter



Anti-rotation System



1750  
68.89"



Panorama tubs gelato counter with tubular steel frame and adjustable legs

Pyrolytic tempered and heated double glazing door for 2 holes.

It is available in **12 holes**.

# FAST PANORAMA®

Panorama® tubs

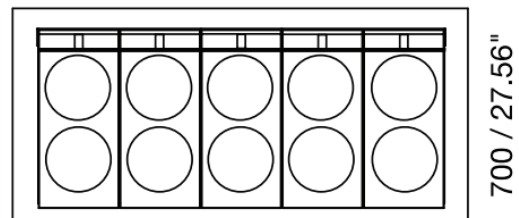


Four Wheels  
Anti-rotation System



1500  
59.05"

Top view



1500 / 59.05"

Fast Panorama is the Panorama Technology applied to the Fast pozzetto, the plug and play pozzetti counter, which is ready for use wherever there is a power socket.

With ventilated refrigeration and an on-board motor, FAST can be installed anywhere and, thanks to its 4 pivoting wheels, can be moved inside or outside the venue.

It is available in **10 holes**.

# Harlan Fairbanks

ESTABLISHED 1938

300 - 819 Cliveden Place  
Delta, British Columbia, V3M 6C7  
Phone: (604) 525-6466  
Fax: 604-525-3444

2355 52 Avenue Southeast #1  
Calgary, Alberta, T2C 4X7  
Phone: (403) 253-9214  
Fax: 403-252-0920

11448 120th Street  
Edmonton, Alberta, T5G 2Y2  
Phone: (780) 454-3333  
Fax: 780-451-0104

7819 South 196th Street  
Kent, Washington, 98032  
Phone: (253) 872-4941  
Fax: 253-872-4926

2343 1st Avenue North  
Saskatoon, Saskatchewan, S7K 2A2  
Phone: (306) 249-2676  
Fax: 306-249-2609

1780 Selkirk Avenue  
Winnipeg, Manitoba, R2R 0N6  
Phone: (204) 697-1779  
Fax: 204-697-1789

182C St. Helens Avenue  
Toronto, Ontario, M6H 4A1  
Phone: (416) 532-5884  
Fax: 416-532-8349

[www.harlans.ca](http://www.harlans.ca)

To place an order or request more information  
please contact us at: [gelato@harlans.ca](mailto:gelato@harlans.ca) or 604-674-7293

