



# CAPSMITH, INC.

HEADWEAR SPECIALISTS



VISIT OUR WEBSITE  
TO VIEW OUR LATEST  
ITEMS, DOWNLOAD  
OUR CATALOGS &  
**ORDER ONLINE**



38th EDITION, VOL. 1

DISTRIBUTOR • MANUFACTURERS & IMPORTERS • WHOLESALER

1-800-228-3889

**WWW.CAPSMITH.COM**  
**SALES@CAPSMITH.COM**

2240 OLD LAKE MARY RD.  
SANFORD, FL 32771

# TABLE OF CONTENTS

	PGS		PGS
2ND AMENDMENT	3	NOVELTY	40
PATCH CAPS	5	TIE DYE	41
POP-A-TOP®	6	COLOR MY CAP	44
PATRIOTIC	7	NUMB SKULL® ICE TOWEL	46
VETERAN	9	DA NBANDO®	48
MILITARY	10	MULTI-USE	50
MADE IN USA MILITARY	15	DA NBANNA® PLATINUM	52
FLAGS	18	DA NBANNA®	54
REEL ANGLER® FLORIDA FLAGE™ HUNTING	21	CHOP TOP®	59
REALTREE®	22	SOLAR SLEEVES	60
HUNTING	23	SKULSKINZ®	62
OUTDOOR BLANKS	24	ACTION BIG EYE CRITTER® CAPS	64
REEL ANGLER® FLORIDA FLAGE™	25	BIG EYE CRITTER® CAPS	68
FISHING	26	BEA HIES	70
REEL ANGLER®	27	DAKOTA DAN®	72
LADIES	28	BLING	74
WESTERN	31	DISPLAYS	76
BIKER & STRAW	33		

## ADDRESS

2240 OLD LAKE MARY RD.  
SANFORD, FL 32771

## TOLL FREE

1-800-228-3889

## EMAIL

SALES@CAPSMITH.COM

## FAX

407-328-7769

## FL LOCAL

407-328-7660

## FACEBOOK

WWW.FACEBOOK.COM/CAPSMITHINC

## ORDER ONLINE

WWW.CAPSMITH.COM

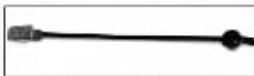
•VIEW OUR  
CATALOGS ONLINE  
BY SCANNING BELOW•



## CLOSURES



Hook & Loop Closure



Pull String w/Square Collar Clip



Plastic Snapback

• CUSTOMIZE YOUR OWN HEADWEAR WITH OUR DOMESTIC PROGRAMS •

ALL HEADWEAR IS ONE SIZE FITS MOST

DESIGNS MAY VARY FROM PICTURES SHOWN. ALL LOGOS AND TRADEMARKS ARE THE PROPERTY OF THEIR RESPECTIVE OWNERS © CAPSMITH, INC. 2022. REEL ANGLER® FLORIDA FLAGE™ COPYRIGHT 2020. HUNTING CAMP CAMP® COPYRIGHT 2009. CAPSMITH, INC. ALL RIGHTS RESERVED

ALL ORIGINAL ARTWORK IS THE COPYRIGHTED MARK OF CAPSMITH, INC. AND IS PROTECTED UNDER THE COPYRIGHT ACT OF 1976, 17 U.S.C. §§ 101, 107, 108. ALL RIGHTS RESERVED. ANY UNAUTHORIZED USE OR REPRODUCTION, INCLUDING DERIVATIVE WORKS, WILL BE PROSECUTED TO THE FULLEST EXTENT ALLOWED BY LAW. ACTUAL PRODUCTS MAY VARY FROM PICTURES SHOWN. CAPSMITH, INC. IS NOT RESPONSIBLE FOR TYPOGRAPHICAL ERRORS.

**6 PANEL PIGMENT DYED CAP**  
 • EMBROIDERY ON CROWN  
 • RELAXED FRONT • POPLIN SWEATBAND • SLIGHTLY EXTENDED DISTRESSED BILL • MESH BACK • HOOK & LOOP CLOSURE • ASSORTED TO INCLUDE 4 PCS EACH PER DOZEN

\*WOVEN APPLIQUE ON CROWN

**GUN RIGHTS ASSORTMENT #3**  
 #SGUNR3



**DON'T TREAD ON ME USA**  
 #SDTUSA

**6 PANEL POLYESTER CAP**  
 • EMBROIDERY ON CROWN • REINFORCED FRONT • CUSTOM DEEP FIT CROWN • SLIGHTLY CURVED BILL • FLIP BILL • MESH BACK • SNAPBACK CLOSURE • HOLOGRAPHIC STICKER ON BILL



**MEDAL OF HONOR BORDER PATROL**  
 #SMOHBP

**6 PANEL POLYESTER CAP**  
 • OLIVE FABRIC APPLIQUE ON CROWN • WOVEN APPLIQUE ON CROWN • EMBROIDERY ON BILL • REINFORCED FRONT • MESH BACK • SNAPBACK CLOSURE



**AMERICA STANDS**  
 #SAMSTD

**6 PANEL CAP** • HEATHER CROWN • POLYESTER BILL & BACK • 3D & TRADITIONAL EMBROIDERY ON CROWN • REINFORCED FRONT • HOOK & LOOP CLOSURE



**CARRY 2A**  
 #SCAR2A

**6 PANEL POLYESTER CAP**  
 • DIGITAL CAMO BILL • 3D EMBROIDERY ON CROWN • REINFORCED FRONT • HOOK & LOOP CLOSURE



**6 PANEL POLYESTER CAP** • EMBROIDERY ON CROWN • APPLIQUE WITH EMBROIDERY ON BILL • REINFORCED FRONT • HOOK & LOOP CLOSURE



**COME & TAKE IT**  
 #S2NCTI



**FREE MEN**  
 #S2NDNP



**COME & TAKE THEM**  
 #S2NDCTT



**DUE TO COST**  
 #S2NDTC



## PATCH CAP

6 PANEL POLYESTER CAP • PATCH APPLIQUE ON CROWN • REINFORCED FRONT •  
HOOK & LOOP CLOSURE



MY RIGHT 2 ARM  
\*SPCNR4



I CARRY THE  
2A  
\*SPCC2A



COME & TAKE THEM  
\*SPCCTT



2ND AMENDMENT  
FREE MEN  
\*SPCFRM



GUN RIGHTS MATTER  
\*SPCGRM



AMERICA STANDS  
\*SPCSYG



BACK THE BLUE  
\*SPCBBL



STAND & DEFEND  
\*SPCSTD





# 1 CAP 3 MESSAGES

Comes with 2 Patches.  
Woven Label Patches are  
Securely Attached in  
Sealed Bag on Inside of  
Cap Crown



6 PANEL POLYESTER CAP • EMBROIDERY ON LOOP PATCH ON CROWN • REINFORCED FRONT • SIDE FLAG EMBROIDERY • HOOK & LOOP CLOSURE • CAP INCLUDES 2 WOVEN LABEL HOOK PATCHES • HOLOGRAPHIC STICKER ON BILL

BASE CAP



DIGITAL CAMO  
2ND AMENDMENT REMOVABLE PATCH CAP  
\*SPBCDC

3.5" X 2" PATCH SIZE

SIDE VIEW

BASE CAP



DIGITAL CAMO / BLACK  
2ND AMENDMENT REMOVABLE PATCH CAP  
\*SPBCDC

# 1 CAP 2 STYLES

1 USA Flag Embroidered  
Patch Included with Cap



6 PANEL POLYESTER CAP • EMBROIDERY ON LOOP PATCH ON CROWN • REINFORCED FRONT • MESH BACK • SNAPBACK CLOSURE • 1 EMBROIDERED USA FLAG PATCH INCLUDED WITH CAP • HOLOGRAPHIC STICKER ON BILL

CAP VIEW WITH  
USA FLAG  
PATCH

BASE CAP

CAP VIEW WITH USA  
FLAG PATCH

BASE CAP



DIGITAL CAMO USA  
PATCH CAP  
\*SUSPC



BLACK USA PATCH CAP  
\*SUSPBL



RED USA PATCH CAP  
\*SUSAPR



ROYAL USA PATCH CAP  
\*SUSAPRL

6 PANEL COTTON CAP • EMBROIDERY ON LOOP PATCH ON CROWN • REINFORCED FRONT • MESH BACK • SNAPBACK CLOSURE • 1 EMBROIDERED USA FLAG PATCH INCLUDED WITH CAP • HOLOGRAPHIC STICKER ON BILL

CAP VIEW WITH  
USA FLAG  
PATCH

BASE CAP

CAP VIEW WITH  
USA FLAG  
PATCH

BASE CAP

CAP VIEW WITH  
USA FLAG  
PATCH

BASE CAP



GREEN CAMO USA PATCH CAP  
\*SUSPGC



OLIVE USA PATCH CAP  
\*SUSPOL



GRAY USA PATCH CAP  
\*SUSPOR

**ASK YOUR  
SALES REP FOR  
PATCH OPTIONS**

6 PANEL POLYESTER CAP • EMBROIDERY ON LOOP PATCH ON CROWN • REINFORCED FRONT • MESH BACK •  
SNAPBACK CLOSURE

EMBROIDERED HOOK PATCH SOLD SEPARATELY • ASK YOUR SALES REP FOR PATCH OPTIONS



RED USA CAP  
\*SUSNPR



ROYAL USA CAP  
\*SUSNPL



BLACK USA CAP  
\*SUSNPB



DIGITAL CAMO USA CAP  
\*SUSNPC



POP-A-TOP 3-SHOOTIN' DEERS  
\*S3S8CM



POP-A-TOP 3-BEER BITCH  
\*S3BB6P



**CAP  
INCLUDES  
BOTTLE  
OPENER!**

6 PANEL POLYESTER  
CAP • EMBROIDERY  
ON CROWN •  
PRINTED "BEER  
IS GREAT"<sup>™</sup>  
BOTTLE OPENER  
HANGS FROM  
METAL EYELETS •  
REINFORCED FRONT  
• HOLOGRAPHIC  
STICKER ON BILL  
• HOOK & LOOP  
CLOSURE



POP-A-TOP 3-BEER HUNTER  
\*S3BHCM



POP-A-TOP 3 - BEER SIGHTING  
\*S3BSCM



POP-A-TOP 3-BEER SEASON  
\*S3BSEC





**U.S. DON'T TREAD ON ME**  
#SDADUS

5 PANEL CAP • 1 COLOR SCREEN PRINT ON CROWN • EMBROIDERY ON CROWN & BILL • REINFORCED FRONT • SNAPBACK CLOSURE



**DON'T TREAD WE THE PEOPLE**  
#SWTPDT

6 PANEL CAP • 1 COLOR SCREEN PRINT ON BILL • EMBROIDERY ON CROWN • REINFORCED FRONT • HOOK & LOOP CLOSURE



**DEFEND THE 2A TONAL**  
#SD2NDT

5 PANEL CAP • SUBLIMATION PRINTED CROWN • 3D EMBROIDERY ON CROWN • EMBROIDERY ON BILL • REINFORCED FRONT • CUSTOM DEEP FIT CROWN • SLIGHTLY CURVED BILL • MESH BACK • SNAPBACK CLOSURE • HOLOGRAPHIC STICKER ON BILL



**USA FLAG PRINTED STARS**  
MESH CAP • NAVY #SUSAMN

6 PANEL CAP • PIGMENT DYED CROWN & BILL • EMBROIDERY ON CROWN • RELAXED FRONT • DISTRESSING ON BILL • PRINTED MESH • HOOK & LOOP CLOSURE



**TAKE A KNEE**  
#STAKEK

6 PANEL CAP • EMBROIDERY ON CROWN • REINFORCED FRONT • HOOK & LOOP CLOSURE



**'MERICA HAT**  
#SMERCA

6 PANEL CAP • EMBROIDERY ON CROWN • REINFORCED FRONT • HOOK & LOOP CLOSURE



**'MERICA HAIR HAT**  
#SMERHH

6 PANEL CAP • EMBROIDERY ON CROWN • REINFORCED FRONT • DETACHABLE HAIR • HOOK & LOOP CLOSURE



**PATRIOT COUNTRY BACK THE BLUE**  
#SPCBTB

6 PANEL CAP • 2 COLOR PRINT ON CROWN WITH WHITE MESH OVERLAY • FABRIC APPLIQUE WITH EMBROIDERY ON CROWN • EMBROIDERY ON BILL • MESH BACK • SNAPBACK CLOSURE



**BACK THE BLUE**  
#SBKTL

6 PANEL CAP • EMBROIDERY & WOVEN APPLIQUE ON CROWN • EMBROIDERY ON BILL • REINFORCED FRONT • CUSTOM DEEP FIT CROWN • SLIGHTLY CURVED BILL • 1 COLOR PRINT ON BACK • WOVEN HOOK & LOOP CLOSURE



**UNLEASHED EAGLE**  
#SUNLEAG

5 PANEL CAP • SUBLIMATION PRINTED CROWN • DISTRESSED FABRIC APPLIQUE OVER SUBLIMATION PRINT ON BILL • EMBROIDERY ON BILL • REINFORCED FRONT • CUSTOM DEEP FIT CROWN • SLIGHTLY CURVED BILL • MESH BACK • SNAPBACK CLOSURE • HOLOGRAPHIC STICKER ON BILL



**UNLEASHED SKULL BERET**  
#SULSKB



**UNLEASHED SNAKE**  
#SULSNK

**FIREFIGHTER TONAL GRAY  
\*SFTNG**

6 PANEL POLYESTER CAP • EMBROIDERY ON FABRIC APPLIQUE ON CROWN • 1 COLOR PRINT ON BILL • CONTRAST RED UNDERVISOR • REINFORCED FRONT • MESH BACK • SNAPBACK CLOSURE



**RED STRIPE  
FIREFIGHTER FLAG  
\*SFLCF**

6 PANEL CAP • EMBROIDERY ON CROWN • REINFORCED FRONT • SNAPBACK CLOSURE



**FIREFIGHTER FIRST IN  
\*SFFILO**

6 PANEL POLYESTER CAP • EMBROIDERY ON CROWN • CONTRAST 3PLY STITCHING ON BILL • CONTRAST RED UNDERVISOR • REINFORCED FRONT • HOOK & LOOP CLOSURE



**AMERICA BUCKET  
\*SUSABKT**

2 COLOR PRINT BUCKET • PRINTED UNDERVISOR



BACK VIEW



UNDERVISOR VIEW



**PROTECT & SERVE BUCKET  
\*SPSVBKT**

2 COLOR PRINT BUCKET • PRINTED UNDERVISOR



BACK VIEW



UNDERVISOR VIEW



**AMERICAN PRIDE  
\*SAMPRC**

6 PANEL CAP • EMBROIDERY & WOVEN APPLIQUE ON CROWN • EMBROIDERY ON BILL • REINFORCED FRONT • CUSTOM DEEP FIT CROWN • SLIGHTLY CURVED BILL • 1 COLOR PRINT ON BACK • WOVEN HOOK & LOOP CLOSURE



**FREEDOM THANK A VET  
\*SMF2TV**

6 PANEL CAP • EMBROIDERY ON CROWN • WOVEN LABEL ON BILL • REINFORCED FRONT • HOOK & LOOP CLOSURE



**FREEDOM U.S. VETERAN  
\*SMS2UV**

6 PANEL CAP • EMBROIDERY ON CROWN • WOVEN LABEL ON BILL • REINFORCED FRONT • HOOK & LOOP CLOSURE



6 PANEL POLYESTER CAP • 3D EMBROIDERY ON CROWN • EMBROIDERY WITH APPLIQUE ON BILL & SIDE • REINFORCED FRONT • TONAL TEXTURED EMBROIDERY ON SIDE • WOVEN HOOK & LOOP CLOSURE



AMERICAN EAGLE DIGITAL CAMO  
\*SAMDC



AMERICAN EAGLE NAVY  
\*SAMEN



AMERICAN EAGLE BLACK  
\*SAMEBL

6 PANEL POLYESTER CAP • EMBROIDERY & WOVEN APPLIQUE ON CROWN • EMBROIDERY ON BILL & SIDES • REINFORCED FRONT • HOOK & LOOP CLOSURE



VIETNAM  
VET  
HONOR &  
REMEMBER  
#SVVHAB



POW MIA  
YOU ARE NOT  
FORGOTTEN  
\*SPWYANF



MEDAL OF HONOR  
VIETNAM VETERAN  
\*SMOVV



RETRO ZERO DARK  
VIETNAM VETERAN  
\*SRZ DVV



RETRO ZERO DARK POW-MIA  
\*SRZDPO

6 PANEL POLYESTER CAP • DIGITAL CAMO APPLIQUE ON CROWN • EMBROIDERY ON CROWN & BILL • DIGITAL CAMO BILL • REINFORCED FRONT • MESH BACK • SNAPBACK CLOSURE

6 PANEL PIGMENT DYED CAP • WOVEN APPLIQUE WITH EMBROIDERY ON CROWN • PRINT AND DISTRESSING ON SLIGHTLY EXTENDED BILL • EMBROIDERED TONAL USA FLAG ON SIDE • RELAXED FRONT • HOOK & LOOP CLOSURE

**DIGITAL PRIDE  
COLLECTION**

6 PANEL DIGITAL CAMO CAP • 3D EMBROIDERY ON CROWN • EMBROIDERY ON BILL • OVERSIZED INSIGNIA ON WEARER'S RIGHT SIDE • EMBROIDERED AMERICAN FLAG ON WEARER'S LEFT SIDE • 1 COLOR PRINT ON UNDERSIVOR • REINFORCED FRONT • HOOK & LOOP CLOSURE



**THANK A VET MOTTO**  
\*SDP2TV

PRINTED UNDERSIVOR VIEW

**VIETNAM VETERAN MOTTO**  
\*SDPMVV

PRINTED UNDERSIVOR VIEW

**DON'T TREAD ON ME MOTTO**  
\*SDPMDT

PRINTED UNDERSIVOR VIEW

**POW/MIA MOTTO**  
\*SDPMP0W

PRINTED UNDERSIVOR VIEW



**DIGITAL PRIDE  
SPACE FORCE™**  
\*SDPUSS

6 PANEL DIGITAL CAMO CAP • 3D EMBROIDERY ON CROWN • EMBROIDERY ON BILL • OVERSIZED INSIGNIA ON WEARER'S RIGHT SIDE • EMBROIDERED AMERICAN FLAG ON WEARER'S LEFT SIDE • REINFORCED FRONT • HOOK & LOOP CLOSURE

**SPACE FORCE™  
BLACK**  
\*SSPFOB

6 PANEL CAP • EMBROIDERY ON CROWN & BILL • EMBROIDERED BRANCH LOGO ON WEARER'S RIGHT SIDE • EMBROIDERED AMERICAN FLAG ON WEARER'S LEFT SIDE • REINFORCED FRONT • HOOK & LOOP CLOSURE



**SECOND LINE PATCH MARINES**  
\*SSLPMA

6 PANEL CAP • EMBROIDERY & PATCH ON CROWN • EMBROIDERED BRANCH LOGO ON BILL • REINFORCED FRONT • HOOK & LOOP CLOSURE

**BASE LINE MARINES**  
\*SBALMA

6 PANEL CAP • EMBROIDERED BRANCH LOGO ON CROWN • SATIN STITCH & BRANCH NAME EMBROIDERY ON BILL • REINFORCED FRONT • HOOK & LOOP CLOSURE

**SHADOW MARINES**  
\*SMShMA

6 PANEL CAP • EMBROIDERED BRANCH LOGO ON CROWN • EMBROIDERY ON BILL • PIPING ON CROWN • SANDWICH BILL • REINFORCED FRONT • HOOK & LOOP CLOSURE

**HEATHER LEATHER MARINES**  
\*SHELMA

6 PANEL CAP • HEATHER GRAY CROWN • FAUX LEATHER BILL • EMBROIDERY ON CROWN • EMBROIDERED BRANCH LOGO ON BILL • REINFORCED FRONT • HOOK & LOOP CLOSURE





**RACING STARS MARINES**  
\*SRCMA

• 6 PANEL CAP • EMBROIDERY ON CROWN & BILL • REINFORCED FRONT • HOOK & LOOP CLOSURE



**EAGLE SCREAM MARINES**  
\*SEAGMA

• 6 PANEL CAP • EMBROIDERY ON CROWN • APPLIQUE AND EMBROIDERY ON BILL • REINFORCED FRONT • HOOK & LOOP CLOSURE



**EAGLE BURST MARINES**  
\*SEMDMA

• 6 PANEL CAP • EMBROIDERY ON CROWN • BRANCH LOGO SIDE EMBROIDERY • REINFORCED FRONT • HOOK & LOOP CLOSURE

## FULL MESH JACKET

• 6 PANEL CAP • MESH CROWN & BACK • EMBROIDERY ON FABRIC APPLIQUE WITH MERROWED EDGE ON CROWN • EMBROIDERY ON BILL • SNAPBACK CLOSURE



**AIR FORCE™**  
\*SFMJAT



**ARMY**  
\*SFMJAR2



**NAVY®**  
\*SFMJNV



**MARINES**  
\*SFMJMA

## VICTORY

• 6 PANEL CAP • EMBROIDERY ON CROWN & BILL • BRANCH LOGO SIDE EMBROIDERY • REINFORCED FRONT • PIPING ON FRONT PANELS • HOOK & LOOP CLOSURE



**AIR FORCE™**  
\*SVICAF



**ARMY**  
\*SVICAR2



**NAVY®**  
\*SVICNV



**MARINES™**  
\*SVICMA

\* NO PIPING ON FRONT PANELS



## FURY

- 6 PANEL PIGMENT DYED CAP
- EMBROIDERY ON CROWN
- RELAXED FRONT • HOOK & LOOP CLOSURE
- \*NOT PIGMENT DYED



AIR FORCE™  
\*SFURAF

ARMY  
\*SFUAR2

NAVY®  
\*SFURNV

MARINES®  
\*SFURMA

## BOLD TACTICS

- 6 PANEL POLYESTER CAP • 3D EMBROIDERY ON CROWN • EMBROIDERY ON BILL • REINFORCED FRONT • HOOK & LOOP CLOSURE



AIR FORCE™  
\*SBOLAF

ARMY  
\*SBOLAR2

NAVY®  
\*SBOLTNV

MARINES MOTTO  
\*SBOLYMA

MARINES RETIRED  
\*SBOLTR

## MEDAL OF HONOR

- 6 PANEL POLYESTER CAP
- DIGITAL CAMO
- APPLIQUE ON CROWN • EMBROIDERY ON CROWN & BILL • DIGITAL CAMO BILL • REINFORCED FRONT • MESH BACK • SNAPBACK CLOSURE



AIR FORCE™  
\*SMOAF

ARMY  
\*SMOAR2

NAVY®  
\*SMONV

MARINES  
#SMONMA

## RETRO ZERO DARK

- 6 PANEL PIGMENT DYED CAP • WOVEN APPLIQUE WITH EMBROIDERY ON CROWN • PRINT AND DISTRESSING ON SLIGHTLY EXTENDED BILL • EMBROIDERED TONAL USA FLAG ON SIDE • RELAXED FRONT • HOOK & LOOP CLOSURE
- \*NOT PIGMENT DYED • NO DISTRESSING ON BILL



AIR FORCE™  
\*SRZDAF

ARMY  
\*SRZAR2

NAVY®  
\*SR2DNV

MARINES®  
\*SR2DMA

ALL LOGOS AND TRADEMARKS ARE THE PROPERTY OF THEIR RESPECTIVE OWNERS. DUE TO LICENSING RESTRICTIONS, DESIGNS MAY VARY FROM PICTURES SHOWN.



## DIAMOND EAGLE

- 6 PANEL CAP
- WOVEN PATCH WITH EMBROIDERY ON CROWN
- EMBROIDERY ON BILL
- REINFORCED FRONT
- CUSTOM DEEP FIT CROWN
- SLIGHTLY CURVED BILL
- MESH BACK
- SNAPBACK CLOSURE



AIR FORCE™  
\*SDIEAAF

ARMY  
\*SDIEAAR2

NAVY®  
\*SDIEANV

MARINES  
\*SDIEAMA

## MILITARY STRIPER

- 6 PANEL CAP
- EMBROIDERY ON APPLIQUE ON CROWN
- OFFSET WOVEN APPLIQUE ON CROWN
- REINFORCED FRONT
- CUSTOM DEEP FIT CROWN
- SLIGHT CURVED BILL
- 3PLY STITCHING ON BILL
- MESH BACK
- SNAPBACK CLOSURE



AIR FORCE™  
\*SMSTAF

ARMY  
\*SMSTAR2

NAVY®  
\*SMSTNV

MARINES  
\*SMSTMA

## DIGITAL PRIDE

- 6 PANEL DIGITAL CAMO CAP
- 3D EMBROIDERY ON CROWN
- EMBROIDERY ON BILL
- OVERSIZED BRANCH LOGO ON WEARER'S RIGHT SIDE & BACK
- EMBROIDERED AMERICAN FLAG ON WEARER'S LEFT SIDE
- REINFORCED FRONT
- HOOK & LOOP CLOSURE



AIR FORCE™ MOTTO  
\*SDPNAF

ARMY MOTTO  
\*SDPNAAR2

NAVY® MOTTO  
\*SDPNNV

MARINES MOTTO  
\*SDPMNA



AIR FORCE™ VETERAN  
\*SDVPAF

ARMY VETERAN  
\*SDVPAAR2

NAVY® VETERAN  
\*SDVPNV

MARINES VETERAN  
\*SDVPMNA



## DANBANNA® DELUXE COMBAT STARS

• QUALITY 100%  
COTTON MATERIAL  
• DOUBLE SIDED  
TIES & TAIL • ULTRA  
SOFT TERRY CLOTH  
SWEATBAND

NAVY®  
\*DELUXE-CDL634



VIETNAM VETERAN  
\*DELUXE-CDL645



AIR FORCE™  
\*DELUXE-CDL635



SPACE FORCE™  
\*DELUXE-CDL649



## DANBANNA® PLATINUM COMBAT STARS

DYNAMIC AND LIFE-LIKE SUBLIMATION  
PRINTED DESIGNS ON PLUSH  
POLYESTER MATERIAL • DELUXE  
TERRY CLOTH SWEATBAND • SOFT MESH  
LINING INSIDE TIES AND TAIL.

ARMY  
\*PLAT-STR636



POW-MIA  
\*PLAT-STR644



## SOLAR SLEEVES

ONE SIZE FITS MOST

## SEE MORE STYLES ON PGS 60-61

EXCLUSIVE SUBLIMATION PRINTED PATTERN ON COMFORTABLE STRETCH FABRIC •  
UPF PROTECTION FACTOR OF 40+ •  
EXCELLENT PROTECTION FROM THE SUN IN A MULTITUDE OF OUTDOOR ACTIVITIES.



AIR FORCE™ CAMO  
\*SOLS112



ARMY CAMO  
\*SOLS1132



NAVY® CAMO  
\*SOLS114





## HONOR USA

6 PANEL CAP • EMBROIDERED BRANCH LOGO & NAME ON CROWN • DECORATIVE SLOGAN EMBROIDERY ON BILL • REINFORCED FRONT • HOOK & LOOP CLOSURE • INCLUDES "MADE IN USA" HANGTAG & STICKER ON BILL



AIR FORCE™  
\*SHONAF-US

ARMY  
\*SHONAR2-US

NAVY®  
\*SHONNA-US

MARINES  
\*SHONMA-US

## SECOND LINE PATCH USA

6 PANEL CAP • EMBROIDERY AND PATCH ON CROWN • EMBROIDERED BRANCH LOGO & 2PLY STITCHING ON BILL • REINFORCED FRONT • HOOK & LOOP CLOSURE • INCLUDES "MADE IN USA" HANGTAG & STICKER ON BILL



AIR FORCE™  
\*SSLPAF-US

ARMY  
\*SSLPAR2-US

NAVY®  
\*SSLPAH-US

MARINES  
\*SSLPMA-US

## SLOGAN USA

6 PANEL CAP • EMBROIDERY ON CROWN • BRANCH LOGO SIDE EMBROIDERY • REINFORCED FRONT • HOOK & LOOP CLOSURE • INCLUDES "MADE IN USA" HANGTAG & STICKER ON BILL



AIR FORCE™  
\*SMS2AF-US

ARMY  
\*SMS2AR2-US

NAVY®  
\*SMS2NA-US

MARINES  
\*SMS2MA-US

## EMBLEM BLACK CUFFED BEANIE USA

ACRYLIC CUFFED BEANIE • EMBROIDERED BRANCH LOGO & NAME ON CUFF • INCLUDES "MADE IN USA" HANGTAG



AIR FORCE™  
\*SEMBBC-AF-US

ARMY  
\*SEMBBC-AR2-US

NAVY®  
\*SEMBBC-NV-US

MARINES  
\*SEMBBC-MA-US

## EMBLEM CUFFED BEANIE USA

ACRYLIC CUFFED BEANIE • EMBROIDERED BRANCH LOGO & NAME ON CUFF • INCLUDES "MADE IN USA" HANGTAG



AIR FORCE™  
\*SEMBCAF-US

ARMY  
\*SEMBCAR2-US

NAVY®  
\*SEMBCNV-US

MARINES  
\*SEMBCMA-US

ALL LOGOS AND TRADEMARKS ARE THE PROPERTY OF THEIR RESPECTIVE OWNERS. DUE TO LICENSING RESTRICTIONS, DESIGNS MAY VARY FROM PICTURES SHOWN.

MADE IN USA MILITARY // 15 //



## SEAMLESS TUBE FACE MASK RAP-A-CAP®

CAN BE USED FOR MOTORCYCLING, BAD HAIR DAYS, FISHING, HUNTING, BOATING, SPORTS AND ANY INDOOR/OUTDOOR ACTIVITY OR SIMPLY AS AN ACCESSORY. IT GUARDS AGAINST THE SUN'S HARMFUL RAYS, WIND, COLD WEATHER AND WICKS AWAY SWEAT, KEEPING THE WEARER COMFORTABLE IN ALL CONDITIONS. TUBULAR SEAMLESS DESIGN ALLOWS COMPLETE COMFORT AND NEVER LOSES ITS SHAPE. STRETCH IT, PULL IT, TWIST IT, IT CAN BE WORN IN 11 DIFFERENT WAYS, INCLUDING A CAR, SCARF, FACEMASK, HEADBAND, NECKSHADE OR SHAPE IT TO FIT YOUR NEEDS. UPF 20+ PROTECTION.



DIAGONAL STRIPE ARMY  
\*SRC0AN2



DIAGONAL STRIPE AIR FORCE™  
\*SRC0AF



DIAGONAL STRIPE NAVY®  
\*SRC0NV



DIAGONAL STRIPE SPACE FORCE™  
\*SRC0SS



TONAL FLAG POW-MIA  
\*SRC0PM



TONAL FLAG VIETNAM VET  
\*SRC0VV



TONAL FLAG DON'T TREAD ON ME  
\*SRC0DT

ALL LOGOS AND TRADEMARKS ARE THE PROPERTY OF THEIR RESPECTIVE OWNERS.  
DUE TO LICENSING RESTRICTIONS, DESIGNS MAY VARY FROM PICTURES SHOWN.







**DAKOTA DAN®  
SIMPLE CAMO**

- TROOPER STYLE DIGITAL CAMO CAP
- LINED WITH FAUX RABBIT FUR
- EMBROIDERY ON SIDES AND BACK
- ADJUSTABLE CHIN STRAP
- EAR FLAPS WITH VENT
- RUBBER "DAKOTA DAN" TAB ON BACK



**ARMY  
\*DAKOTAC-USAR2**

**VIETNAM VET  
\*DAKOTAC-VIET**

**POW MIA  
\*DAKOTAC-POW**



**AIR FORCE™  
\*DAKOTAC-USAF**

**NAVY®  
\*DAKOTAC-USNA**

**DON'T TREAD ON ME  
\*DAKOTAC-DONT**

**JACQUARD  
STRIPE BEANIE**

- CUFFED BEANIE
- JACQUARD STRIPE ON CUFF
- WOVEN APPLIQUE



**AIR FORCE™  
\*SJSCBAF**

**ARMY  
\*SJSCBAR**

**NAVY®  
\*SJSCBNA**

**MARINES  
\*SJSCBUS**

**OFFICIALLY LICENSED  
3' X 5' MILITARY FLAGS**



• 3' X 5' POLYESTER FLAG • 2 METAL GROMMETS • FOR USE BOTH INDOORS AND OUTDOORS • FLAGS ARE INDIVIDUALLY BAGGED WITH HEADER CARD & FLAG PRINT ON PAPER INSERT



**MISSION FIRST 3' X 5' FLAG  
AIR FORCE™  
#SMFLAF**



**MISSION FIRST 3' X 5' FLAG  
ARMY  
#SMFLAR2**



**MISSION FIRST 3' X 5' FLAG  
NAVY®  
#SMFLNV**



**STRIKE FORCE 3' X 5' FLAG  
AIR FORCE™  
#SSFLAF**



**STRIKE FORCE 3' X 5' FLAG  
ARMY  
#SSFLAR2**



**STRIKE FORCE 3' X 5' FLAG  
NAVY®  
#SSFLNA**



**COMMANDO ELITE 3' X 5' FLAG  
AIR FORCE™  
#SCEAFL**



**COMMANDO ELITE 3' X 5' FLAG  
ARMY  
#SCEARFL2**



**COMMANDO ELITE 3' X 5' FLAG  
NAVY®  
#SCEANFL**



**MISSION FIRST 3' X 5' FLAG  
SPACE FORCE™  
#SMFSFF**

PACKAGING  
EXAMPLE



ALL LOGOS AND TRADEMARKS ARE THE PROPERTY OF THEIR RESPECTIVE OWNERS. DUE TO LICENSING RESTRICTIONS, DESIGNS MAY VARY FROM PICTURES SHOWN. DUE TO LICENSING RESTRICTIONS, DESIGNS MAY VARY FROM PICTURES SHOWN.





PACKAGING  
EXAMPLE



HOMELAND SECURITY  
\*SA0FF



THANK A VET  
\*SFLTHV



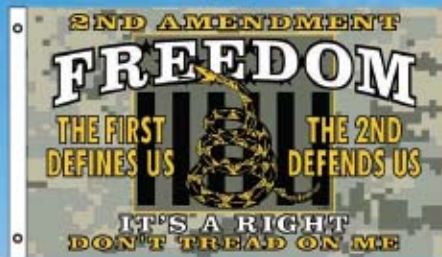
POW MIA  
\*SPWFL



VIETNAM VETERAN  
\*SFLAV



GUNS MONEY FREEDOM DOLLAR  
\*SGMDF



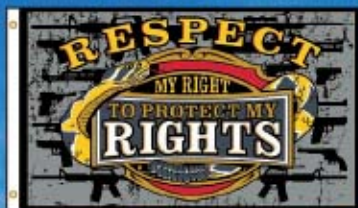
2ND AMENDMENT FREEDOM  
\*S2NDFCF



GOD GUNS GUTS  
\*SGGFL



FREE MEN RIGHT TO ARM  
\*SFMRTAF



2ND AMENDMENT RESPECT RIGHTS  
#SRMRF



AMERICAN  
#SFLUSA



FIREFIGHTER  
#SFIRFL



FIRST RESPONDERS  
#SFLRE



POLICE  
#SPOLFL



DEFEND DON'T DEFUND POLICE  
#SDDDFL



JOLLY ROGER  
#SFJORO



AMERICAN PRIDE  
#SANGPR



BEER SEASON  
#SFBESE



5 O'CLOCK SOMEWHERE  
#SF5OCL



4.20 SOMEWHERE  
#SF420S

REEL A HOLER®  
FISHING  
3' X 5' FLAGS  
AVAILABLE ON  
PAGE 27



PACKAGING  
EXAMPLE



FLORIDA  
#SFLFLA



CHECKERED  
#SFCNEC



GADSDEN  
#SGADSF



**REEL ANGLER®  
FLORIDAFLAGE™  
HUNTING**



**REEL ANGLER® FLORIDAFLAGE™  
HUNTING VISOR  
#SRAFFHV**

SUBLIMATION PRINTED VISOR  
• LOW CUT SIDES • COTTON  
SWEATBAND • HOOK & LOOP  
CLOSURE • HOLOGRAPHIC  
STICKER ON BILL



**REEL ANGLER® FLORIDAFLAGE™  
HUNTING BLANK  
#SRAFFH**

6 PANEL CAP • SUBLIMATION PRINT  
ON POLYESTER KNIT • CUSTOM DEEP  
FIT CROWN • REINFORCED FRONT  
• COTTON SWEATBAND • SLIGHTLY  
CURVED BILL • PRINTED INNER  
TAPING • SNAPBACK CLOSURE •  
HOLOGRAPHIC STICKER ON BILL



**REEL ANGLER® FLORIDAFLAGE™  
HUNTING / OLIVE MESH BACK BLANK  
#SRAFFH**

6 PANEL CAP • SUBLIMATION PRINT  
ON POLYESTER KNIT CROWN & BILL •  
CUSTOM DEEP FIT CROWN • REINFORCED  
FRONT • COTTON SWEATBAND • SLIGHTLY  
CURVED BILL • MESH BACK • PRINTED  
INNER TAPING • SNAPBACK CLOSURE •  
HOLOGRAPHIC STICKER ON BILL



**REEL ANGLER® FLORIDAFLAGE™  
HUNTING SCALESKINZ®  
#SRAFFG**

SUBLIMATION PRINTED  
SEAMLESS TUBE FACE MASK



**REEL ANGLER® FLORIDAFLAGE™  
HUNTING JUNGLE  
#SRAFFJ-HCC**

SUBLIMATION PRINTED JUNGLE •  
EXTENDED BRIM • JUNGLE STYLE  
HAT WITH 4 BRASS EYELETS • SNAPS  
ON EACH SIDE OF BRIM & CROWN •  
ADJUSTABLE TIE STRING • CAP SIZE IS  
NOT ADJUSTABLE • UPF PROTECTION  
FACTOR OF 50+  
HOLOGRAPHIC STICKER ON BILL



6 PANEL CAP •  
SUBLIMATION PRINT ON  
POLYESTER KNIT • WOVEN  
APPLIQUE ON CROWN •  
REINFORCED FRONT •  
CUSTOM DEEP FIT CROWN  
• SLIGHTLY CURVED BILL  
• PRINTED INNER TAPING  
• MESH BACK • SNAPBACK  
CLOSURE • HOLOGRAPHIC  
STICKER ON BILL •  
ASSORTED TO INCLUDE 4  
PCS EACH PER DOZEN



**BACKWOODS SOUTHERN  
REEL ANGLER® FLORIDAFLAGE™ HUNTING ASSORTMENT  
#SBWFL-ASST**

OFFICIALLY LICENSED



**REALTREE**  
CAMOUFLAGE PATTERNS



**DEADLY IN CAMO**  
REALTREE EDGE®  
\*SRTPPDC

OFFICIALLY LICENSED REALTREE EDGE® CAMO FABRIC • 6 PANEL CAP • EMBROIDERY ON CROWN & BILL • RHINESTONE ACCENTS ON CROWN • RELAXED FRONT • HOOK & LOOP CLOSURE • HOLOGRAPHIC STICKER ON BILL

**SHOOT LIKE A GIRL**  
REALTREE EDGE®  
\*SRTSLG

OFFICIALLY LICENSED REALTREE EDGE® CAMO FABRIC • 6 PANEL CAP • EMBROIDERY ON CROWN • REINFORCED FRONT • CUSTOM DEEP FIT CROWN • SLIGHTLY CURVED BILL • SNAPBACK CLOSURE • HOLOGRAPHIC STICKER ON BILL

**BEER HUNTER**  
REALTREE EDGE®  
\*SRTBRH



**REALTREE EDGE® FACE MASK**  
\*SRTMASK

7 1/2 INCH WIDE X 5 1/2 INCH TALL FACE MASK • REALTREE® EDGE FABRIC • ADJUSTABLE BLACK STRAPS • BLACK INNER LINING • WITH HEADER CARD



**REALTREE EDGE®†**  
\*SRTF-EDGE

REALTREE EDGE® \*SRTCMH

**REALTREE EDGE® MESH**  
\*SRTCMH

OFFICIALLY LICENSED REALTREE EDGE® CAMO FABRIC • 6 PANEL CAP • REINFORCED FRONT • CUSTOM DEEP FIT CROWN • SLIGHTLY CURVED BILL • MESH BACK • SNAPBACK CLOSURE • HOLOGRAPHIC STICKER ON BILL  
† HOOK & LOOP CLOSURE



**REALTREE EDGE® / KHAKI MESH**  
\*SRTM-EDGE

**REALTREE EDGE® / OLIVE MESH**  
\*SRTM-OLI

**REALTREE EDGE® / CHARCOAL MESH**  
\*SRTM-CHA

**REALTREE EDGE® VISOR†**  
\*SRTIF-EDGE



6 PANEL POLYESTER CAP • EMBROIDERY ON CROWN • CAMO APPLIQUE ON BILL • CAMO BACK • REINFORCED FRONT • HOOK & LOOP CLOSURE • ASSORTED TO INCLUDE 4 PCS EACH PER DOZEN

\* WOVEN APPLIQUE ON CROWN

BACKWOODS HUNTING ASSORTMENT #8  
#SPBW8



6 PANEL CAP • MESH CROWN & BACK • CAMO BILL • EMBROIDERY ON FABRIC APPLIQUE WITH MERROWED EDGE ON CROWN • SNAPBACK CLOSURE • ASSORTED TO INCLUDE 4 PCS EACH PER DOZEN

BACK COUNTRY MESH ASSORTMENT #1  
#SCMS1



PIXELATED CAMO  
#6CAM



CAMO BLANK  
#6RCAM



DIGITAL CAMO  
#6QCAM



MILITARY CAMO  
#6SMGC

6 PANEL CAP • REINFORCED FRONT • HOOK & LOOP CLOSURE

6 PANEL POLYESTER CAP • REINFORCED FRONT • HOOK & LOOP CLOSURE

### MICROFIBER BIG BILL FISHING CAP WITH FLAP

6 PANEL CAP • MICROFIBER • RELAXED FIT • EXTENDED BILL • MATCHING MESH SIDE PANELS • DARK GREEN UNDERSVIVOR • PROTECTIVE NECK FLAP • FULL STRING CLOSURE WITH SQUARE COLLAR CLIP • LIGHTWEIGHT & DRIES QUICKLY • ANTI-UV MICROFIBER MATERIAL HAS A UV PROTECTION FACTOR (UPF) OF 50+ • HOLOGRAPHIC STICKER ON BILL



NAVY  
\*87MM-NAV

OLIVE  
\*87MM-OLI

KHAKI  
\*87MM-KHA

STONE  
\*87MM-STO

### MICROFIBER MESH JUNGLES

EXTENDED BRIM • JUNGLE STYLE HAT • MICROFIBER HAT • MATCHING MESH IN CENTER PANEL • SELF FABRIC SWEATBAND • SNAPS ON EACH SIDE OF BRIM & CROWN • ADJUSTABLE TIE STRING • LIGHTWEIGHT & DRIES QUICKLY • ANTI-UV MICROFIBER MATERIAL HAS A UV PROTECTION FACTOR (UPF) OF 50+ • HOLOGRAPHIC STICKER ON BILL • CAP SIZE IS NOT ADJUSTABLE



NAVY  
\*99MM-NAV

LT. OLIVE  
\*99MM-LOL

KHAKI  
\*99MM-KHA

STONE  
\*99MM-STO

### PREMIUM JUNGLE HAT

EXTENDED BRIM • JUNGLE STYLE HAT WITH 4 BRASS EYELETS • SNAPS ON EACH SIDE OF BRIM & CROWN • ADJUSTABLE TIE STRING • CAP SIZE IS NOT ADJUSTABLE



NAVY  
\*99PLU-NAV

CHOCOLATE  
\*99PLU-CHO

ELMWOOD  
\*99PLU-ELM



STONE  
\*99PLU-STO

KHAKI  
\*99PLU-KHA

GRAY  
\*99PLU-GRA

SAGE  
\*99PLU-SAG

EXTENDED BRIM • SUBLIMATION PRINTED JUNGLE • MESH BACK AND SIDE PANELS • BRASS EYELETS • SNAPS ON EACH SIDE OF BRIM & CROWN • ADJUSTABLE STRING • MICROFIBER SWEATBAND • UPF PROTECTION FACTOR OF 50+ • HOLOGRAPHIC STICKER ON BILL



SHARK CAMO  
JUNGLE  
\*SSHCM

BASS CAMO  
JUNGLE  
\*SBA CM

MARLIN CAMO  
JUNGLE  
\*SMARCM



**BOONIE HAT**

EXTENDED BRIM • 2 BRASS EYELETS ON EACH SIDE • SNAPS ON EACH SIDE OF BRIM AND CROWN • ADJUSTABLE TIE STRING • CAP SIZE IS NOT ADJUSTABLE



SCAN THIS CODE TO VIEW OUR BLANKS CATALOG

PIXELATED BROWN CAMO  
\*SPXBON-BROPIXELATED OLIVE CAMO  
\*SPXBON-OLIPIXELATED GREEN CAMO  
\*SPXBON-GRNBEIGE  
\*SPBOON-BEIKHAKI  
\*SPBOON-SKHBLACK  
\*SPBOON-BLKNAVY  
\*SPBOON-NAVOLIVE  
\*SPBOON-OLIREEL ANGLER®  
FLORIDAFLAGE™ BLANK  
\*SRAFFLREEL ANGLER® FLORIDAFLAGE™  
WHITE MESH BACK BLANK \*  
#65RCM-CBLREEL ANGLER® FLORIDAFLAGE™  
PINK / WHITE MESH BACK BLANK  
\*SRAFFP

6 PANEL CAP • SUBLIMATION PRINT ON BIRDSYE MESH • WOVEN LABEL ON SIDE • REINFORCED FRONT • PRINTED INNER TAPING • SNAPBACK CLOSURE • HOLOGRAPHIC STICKER ON BILL

6 PANEL CAP • SUBLIMATION PRINT ON BIRDSYE MESH CROWN &amp; BILL • CUSTOM DEEP FIT CROWN • REINFORCED FRONT • COTTON SWEATBAND • SLIGHTLY CURVED BILL • MESH BACK • PRINTED INNER TAPING • SNAPBACK CLOSURE • HOLOGRAPHIC STICKER ON BILL • WOVEN LABEL ON SIDE

REEL ANGLER® FLORIDAFLAGE™  
SCALESKINZ®  
\*SRAFF

• SUBLIMATION PRINTED SEAMLESS TUBE FACE MASK

REEL ANGLER® FLORIDAFLAGE™  
AVAILABLE IN PROTECTIVE SOLAR  
SLEEVES ON PAGE 60SUBLIMATION PRINTED VISOR  
• LOW CUT SIDES • COTTON SWEATBAND • HOOK & LOOP CLOSURE • HOLOGRAPHIC STICKER ON BILLREEL ANGLER®  
FLORIDAFLAGE™  
PINK VISOR  
\*SRAFFPVREEL ANGLER® FLORIDAFLAGE™  
VISOR  
\*SRAFFBVREEL ANGLER® FLORIDAFLAGE™  
WHITE MESH BACK  
\*RAFCAM

6 PANEL CAP • SUBLIMATION PRINT ON BIRDSYE MESH CROWN &amp; BILL • 3D OFFSET EMBROIDERY ON CROWN • MESH BACK • REINFORCED FRONT • WOVEN LABEL ON SIDE • PRINTED INNER TAPING • SNAPBACK CLOSURE • HOLOGRAPHIC STICKER ON BILL





REALTREE FISHING™ BLUE /  
 WHITE MESH  
 #65RTM-BLU



REALTREE FISHING™ BLUE  
 #65RTM-SBL



REALTREE FISHING™  
 BLUE JUNGLE ∞  
 #99PLU-RTFB

REALTREE FISHING™ BLUE VISOR™†  
 #90ETV-RTSB

6 PANEL POLYESTER CAP •  
 EMBROIDERY ON CROWN •  
 REINFORCED FRONT • HOOK &  
 LOOP CLOSURE

+ WOVEN APPLIQUE ON CROWN



LARGE MOUTH  
 #5LMABS



BASS MATTERS  
 #5BFMTR



BASS ACTION +  
 #5BSAFL

6 PANEL CAP • WOVEN APPLIQUE WITH EMBROIDERY ON CROWN • REINFORCED FRONT • CUSTOM DEEP FIT CROWN • SLIGHTLY CURVED BILL • MESH BACK • SNAPBACK CLOSURE • ASSORTED TO INCLUDE 6 PCS EACH PER DOZEN



REEL ANGLER® FLAG - FRESHWATER ASSORTMENT  
 #SRAFFW-ASST



REEL ANGLER® FLAG - SALTWATER ASSORTMENT  
 #SRAFSW-ASST





**WALLEYE  
\*RAUSAWL**

**SAILFISH  
\*RAUSAF**

**BASS  
\*RAUSABS**

**REDFISH  
\*RAUSARF**

**CLOSEUP OF SIDE WOVEN LABEL**



**REEL ANGLER® VINTAGE USA**

- 6 PANEL CAP • SUBLIMATION PRINTED APPLIQUE ON CROWN WITH EMBROIDERY • SIDE "REEL ANGLER" & USA FLAG WOVEN APPLIQUE • CUSTOM DEEP FIT CROWN • SLIGHTLY CURVED BILL • MESH BACK • SNAPBACK CLOSURE • HOLOGRAPHIC STICKER ON BILL



**MARLIN  
\*RAUSANR**

**TARPON  
\*RAUSATPN**

**DOLPHIN  
\*RAUSADOL**

3' X 5' POLYESTER FLAG • 2 METAL GROMMETS • FOR USE BOTH INDOORS AND OUTDOORS • FLAGS ARE INDIVIDUALLY BAGGED WITH HEADER CARD & FLAG PRINT ON PAPER INSERT.



**PACKAGING  
EXAMPLE**



**REEL ANGLER® SALTWATER FLAG  
\*SRAUSSWF**



**REEL ANGLER® FRESHWATER FLAG  
\*SRAUSFWF**

**PACKAGING**



**REEL ANGLER® ICONIC  
FLAG FACE MASK  
\*SFAICF**

- ALL OVER SUBLIMATION PRINT
- STRETCHY, BREATHABLE POLYESTER
- MESH FRONT PANEL
  - UPF 40+
- ONE SIZE FITS MOST

**PACKAGING**

**FRONT VIEW**

**REEL ANGLER®  
GLOVES  
\*SGLICF**

- ALL OVER SUBLIMATION PRINT
- STRETCHY BREATHABLE POLYESTER
- PALM GRIP HAS SUBLIMATED POLYESTER MESH & RUBBER SCALE DESIGN GRIP
  - UPF 40+
- ONE SIZE FITS MOST



**PALM  
VIEW**



**BARN BABE**  
#SBARNB

6 PANEL PIGMENT DYED CAP • EMBROIDERY ON CROWN & BILL • RHINESTONE ACCENTS ON CROWN • RELAXED FRONT • DISTRESSED BILL WITH CONTRASTING FABRIC • HOOK & LOOP CLOSURE



**GLITTER & DIRT GIRL**  
#SGLBTG

6 PANEL CAP • GLITTER APPLIQUE & EMBROIDERY ON CROWN • RHINESTONE ACCENTS ON CROWN • RELAXED FRONT • GLITTER FLIP BILL • MESH BACK • SNAPBACK CLOSURE



**HOWDY HONEY**  
#SHHCAC

6 PANEL CAP • PIGMENT DYED FRONT • EMBROIDERY ON CROWN • RELAXED FRONT • DISTRESSING ON SLIGHTLY EXTENDED BILL • MESH BACK • HOOK & LOOP CLOSURE



**HEY Y'ALL LEATHER**  
#SHYLLP

6 PANEL WASHED CAP • PRINTED EMBOSS FAUX LEATHER ON CROWN • DISTRESSING ON FLIP BILL • RELAXED FRONT • HOOK & LOOP CLOSURE



**BADASS BETH**  
#SBABETH

6 PANEL CAP • SUBLIMATION PRINTED CROWN • FAUX SUEDE APPLIQUE WITH EMBROIDERY ON CROWN • FAUX SUEDE BILL • REINFORCED FRONT • HOOK & LOOP CLOSURE



**BITCHY BETH**  
#SBIBETH

6 PANEL CAP • SUBLIMATION PRINTED CROWN • FAUX SUEDE BILL • WOVEN APPLIQUE WITH EMBROIDERY ON CROWN • REINFORCED FRONT • MESH BACK • SNAPBACK CLOSURE



**BOOTS KNOCKIN'**  
#SHFBKN

6 PANEL CAP • EMBROIDERY ON CROWN & BILL • REINFORCED FRONT • HOOK & LOOP CLOSURE



**WHISKEY CHEETAH**  
#SWCHEE

6 PANEL CAP • EMBOSSED & PRINTED FAUX LEATHER APPLIQUE ON CROWN • FABRIC APPLIQUE WITH EMBROIDERY ON BILL • REINFORCED CROWN • HOOK & LOOP CLOSURE



**COWGIRL SOUL**  
#SCGSOL

6 PANEL CAP • HEATHER CROWN & BILL • 3D & TRADITIONAL EMBROIDERY ON CROWN WITH RHINESTONE ACCENTS • WOVEN APPLIQUE ON CROWN • REINFORCED FRONT • MESH BACK • SNAPBACK CLOSURE



**COWGIRL PRA YER SWIRLS**  
#SCPSRW

6 PANEL CAP • EMBROIDERY ON CROWN & BILL • APPLIQUE ON BILL • RHINESTONE ACCENTS ON CROWN • REINFORCED FRONT • HOOK & LOOP CLOSURE



**GUNS & GLITTER**  
#SGNGLT

6 PANEL CAP • GLITTER APPLIQUES & EMBROIDERY ON CROWN • RELAXED FRONT • GLITTER UNDERVISOR • MESH BACK • SNAPBACK CLOSURE



**SOUTHERN GIRL GUN CLUB**  
#SSGGNC

6 PANEL CAP • EMBROIDERY ON FABRIC APPLIQUE ON CROWN • RHINESTONE ACCENTS ON CROWN • REINFORCED FRONT • PRINTED CAMO MESH BACK • SNAPBACK CLOSURE





**GLITTER AND GUNS**  
#SGGCMO

6 PANEL CAP • EMBROIDERY ON CROWN • RHINESTONE ACCENTS ON CROWN • REINFORCED FRONT • HOOK & LOOP CLOSURE



**SMALL TOWN GIRL**  
#SSMTNG

6 PANEL WASHED CAP • EMBROIDERY & RHINESTONE ACCENTS ON CROWN • DISTRESSING ON FLIP BILL • RELAXED FRONT • HOOK & LOOP CLOSURE



**PISTOLS & PEARLS**  
#SPSTPL

6 PANEL WASHED CAP • 3D EMBROIDERY ON CROWN • FLAT EMBROIDERY & RHINESTONE ACCENTS ON CROWN • DISTRESSING ON FLIP BILL • RELAXED FRONT • HOOK & LOOP CLOSURE



**FREE SPIRIT**  
#SFRESPT

6 PANEL WASHED CAP • EMBROIDERY & RHINESTONE ACCENTS ON CROWN • DISTRESSING ON FLIP BILL • RELAXED FRONT • HOOK & LOOP CLOSURE



**COUNTRY GIRL AT HEART**  
#SCGAHT

6 PANEL WASHED CAP • EMBROIDERY & RHINESTONE ACCENTS ON CROWN • DISTRESSING ON FLIP BILL • RELAXED FRONT • HOOK & LOOP CLOSURE



**MY MANE SQUEEZE**  
#SMYNSQ

6 PANEL CAP • EMBROIDERY OVER FAUX SUEDE APPLIQUE ON CROWN • RHINESTONE ACCENTS ON CROWN • REINFORCED CROWN • HOOK & LOOP CLOSURE



**RODEO R & R**  
#SRORRR

6 PANEL CAP • 3D EMBROIDERY OVER WOVEN APPLIQUE ON CROWN • REINFORCED FRONT • FLIP BILL • HOOK & LOOP CLOSURE



**BUCKLE BUNNY**  
#SBUCCN

6 PANEL CAP • EMBROIDERY ON FAUX SUEDE FABRIC APPLIQUE ON CROWN • REINFORCED FRONT • RHINESTONE ACCENTS ON CROWN • FAUX SUEDE BILL • HOOK & LOOP CLOSURE



**WILD WEST WOMAN**  
#SWWWT

6 PANEL CAP • 3D & FLAT EMBROIDERY ON CROWN • RHINESTONE ACCENTS ON CROWN • EMBROIDERY ON BILL • REINFORCED FRONT • MESH BACK • SNAPBACK CLOSURE



**FAITH FARM FAMILY**  
#SFFFAF

6 PANEL CAP • EMBROIDERY ON CROWN • RHINESTONE ACCENTS ON CROWN • RELAXED FRONT • SUBLIMATION PRINTED BILL • HOOK & LOOP CLOSURE



**COWGIRL TOUGH**  
#SPOCGT

6 PANEL WASHED CAP • WOVEN APPLIQUE OVER DISTRESSED FABRIC APPLIQUE ON CROWN • RELAXED FRONT • DISTRESSING ON FLIP BILL • HOOK & LOOP CLOSURE



**DISTRESSED MOM CAP**  
#SDMOMC

6 PANEL PIGMENT DYED CAP • EMBROIDERY ON CROWN • DISTRESSING ALL OVER CAP • RELAXED FRONT • KEEP YOUR HAIR OFF YOUR NECK WITH HORSETAIL OPENING • HOLOGRAPHIC STICKER ON BILL



**COUNTRY HEAVEN**  
#SC8HBD



**BLESS THIS MESS**  
#SBLTMS



**GRACE & GRIT**  
#SGRGRIT



**RANCH BABE**  
#SRNBAB

6 PANEL PIGMENT DYED CAP • EMBROIDERY ON CROWN • RHINESTONE ACCENTS ON CROWN • RELAXED FRONT • DISTRESSING ON BILL • 3PLY STITCHING • HOOK & LOOP CLOSURE

5 PANEL CAP • SUBLIMATION PRINTED CROWN • EMBOSSED PRINTED FAUX LEATHER APPLIQUE ON CROWN • SUBLIMATION PRINTED UNDERSVISOR • MESH BACK • SNAPBACK CLOSURE • PRINTED INNER TAPING



**I DON'T GIVE A FLOCK**  
FLAMINGO FLOAT RASPBERRY  
#SDFFFL



**MAMA BEAR TEAL**  
#SMAMAB



**COUNTRY CUTIE MINT**  
#SGSCCRB



**HEY Y'ALL MELON BOOTS**  
#SHYCOWM



**BUTTERCUP WISTERIA**  
#SGSSIUB

**GOING SOUTH**

\*OYE LOTS & CAP COLORS MAY VARY

6 PANEL SOFT WASHED CAP • DISTRESSED APPLIQUE ON CROWN WITH EMBROIDERY • DISTRESSED BILL • 3PLY STITCHING ON BILL • RELAXED FRONT • BRASS BUCKLE CLOSURE

SELECT GOING SOUTH STYLES AVAILABLE TO EMBROIDER WITH YOUR NAMEDROP!

**COWGIRL CAP CLUB**  
MINT / STONE  
#SCGCP-MST



**COWGIRL CAP CLUB**  
BABY BLUE / STONE  
#SCGCP-BBS



**COWGIRL CAP CLUB**  
MAGENTA / GRAY  
#SCGCP-MLG



**COWBOY CAP CLUB**  
BROWN / STONE  
#SCBCPC-BRN



**COWBOY CAP CLUB**  
LIGHT GRAY / WHITE  
#SCBCPC-GWH



**COWBOY CAP CLUB**  
NAVY / STONE  
#SCBCPC-LNS

6 PANEL WASHED CAP • EMBROIDERY OVER FABRIC APPLIQUE ON CROWN • RELAXED FRONT • DISTRESSING ON BILL • MESH BACK • SNAPBACK CLOSURE





**KEEPIN' IT RURAL**  
#SKPRUR

6 PANEL CAP • EMBROIDERY ON CROWN • REINFORCED FRONT • SUBLIMATION PRINTED BILL • MESH BACK • SNAPBACK CLOSURE



**RANCH HAND TOUGH LADIES**  
#SLGRHT

6 PANEL WASHED CAP • WOVEN APPLIQUE OVER DISTRESSED FABRIC APPLIQUE ON CROWN • RELAXED FRONT • DISTRESSING ON SLIGHTLY EXTENDED FLIP BILL • MESH BACK • HOOK & LOOP CLOSURE



**FARM RAISED**  
#SFRCEB

5 PANEL CAP • 1 COLOR PRINT ON CROWN WITH EMBROIDERY • REINFORCED FRONT • CUSTOM DEEP FIT CROWN • SLIGHTLY CURVED BILL • MESH BACK • SNAPBACK CLOSURE • HOLOGRAPHIC STICKER ON BILL



**SUPPORT FARMERS BURNT ORANGE**  
#SSLFBO

6 PANEL PIGMENT DYED CAP • WOVEN APPLIQUE ON CROWN • DISTRESSING ON SLIGHTLY EXTENDED BILL • RELAXED FRONT • SEWN EYELETS • MESH BACK • HOOK & LOOP CLOSURE



**KEEP AMERICA COUNTRY**  
#SKACHT

6 PANEL CAP • 3D EMBROIDERY & SUBLIMATION PRINTED APPLIQUE ON CROWN • REINFORCED FRONT • MESH BACK • SNAPBACK CLOSURE



**JEAN POCKET ASSORTMENT**  
#SJPKT-ASST

6 PANEL CAP • DENIM FRONT • EMBROIDERY OVER FABRIC APPLIQUE ON CROWN • DENIM APPLIQUE ON BILL • REINFORCED FRONT • CUSTOM DEEP FIT CROWN • SLIGHTLY CURVED BILL • MESH BACK • HOOK & LOOP CLOSURE • HOLOGRAPHIC STICKER ON BILL • ASSORTED TO INCLUDE 4 PCS EACH PER DOZEN



**COWBOY TOUGH FLAG**  
#SCBTFI

6 PANEL WASHED CAP • WOVEN APPLIQUE OVER DISTRESSED FABRIC APPLIQUE ON CROWN • RELAXED FRONT • DISTRESSING ON FLIP BILL • HOOK & LOOP CLOSURE



**RANCH HAND TOUGH MEN**  
#SMGRHT

6 PANEL WASHED CAP • WOVEN APPLIQUE OVER DISTRESSED FABRIC APPLIQUE ON CROWN • RELAXED FRONT • DISTRESSING ON SLIGHTLY EXTENDED FLIP BILL • MESH BACK • HOOK & LOOP CLOSURE



**AUTHENTIC COUNTRY TOUGH**  
#SAUTHCT

6 PANEL PIGMENT DYED CAP • EMBROIDERY ON CROWN • RELAXED FRONT • DISTRESSING ON FLIP BILL • HOOK & LOOP CLOSURE



**AUTHENTIC FARM TOUGH**  
#SAUTF

6 PANEL PIGMENT DYED CAP • EMBROIDERY ON CROWN • RELAXED FRONT • DISTRESSING ON SLIGHTLY EXTENDED FLIP BILL • MESH BACK • HOOK & LOOP CLOSURE



**TAKE EM TO THE TRAIN STATION**  
#STMTS

6 PANEL WASHED CAP • EMBROIDERY ON CROWN • DISTRESSING ON FLIP BILL • RELAXED FRONT • HOOK & LOOP CLOSURE

6 PANEL CAP • 3D & FLAT EMBROIDERY ON CROWN • REINFORCED FRONT • CUSTOM DEEP FIT CROWN • SLIGHTLY CURVED BILL • MESH BACK • SNAPBACK CLOSURE • HOLOGRAPHIC STICKER ON BILL



**3D COWBOY TOUGH MEXICO**  
#S3DCTMX



**3D COWBOY TOUGH USA**  
#S3DCTUS



**TRAIN STATION RIP**  
#STTRIP

6 PANEL CAP • EMBROIDERY ON CROWN & BILL • FAUX LEATHER BILL • REINFORCED FRONT • HOOK & LOOP CLOSURE



**COWBOY LIFE**  
#SCBLF

6 PANEL CAP • EMBROIDERY ON FABRIC APPLIQUE ON CROWN • FAUX OSTRICH APPLIQUE ON CROWN • FAUX OSTRICH BILL • REINFORCED FRONT • HOOK & LOOP CLOSURE



**WHISKY DRINKIN COWBOY**  
#SWDCST

6 PANEL CAP • EMBROIDERY ON CROWN & BILL • REINFORCED FRONT • FAUX SUEDE BILL • WOVEN HOOK & LOOP CLOSURE



**FEEL THE WIND OILSKIN EAGLE MOTOR BLACK**  
#SFTWEM

6 PANEL OILSKIN BLACK CAP • EMBROIDERY ON CROWN • REINFORCED FRONT • HOOK & LOOP CLOSURE



**COWBOY PRA YER SCROLLS**  
#SCBPSC

6 PANEL CAP • EMBROIDERY ON CROWN & BILL • APPLIQUE ON BILL • REINFORCED FRONT • HOOK & LOOP CLOSURE



**COWBOY CHURCH**  
#SCBCHU

6 PANEL CAP • EMBROIDERY ON CROWN • FAUX SUEDE BILL • WOVEN LABEL & EMBROIDERY ON BILL • REINFORCED FRONT • HOOK & LOOP CLOSURE



**COWBOY TOUGH OILSKIN**  
#SCOTOU

6 PANEL OILSKIN BROWN CAP • EMBROIDERY ON CROWN • REINFORCED FRONT • HOOK & LOOP CLOSURE



**COWBOY CREED**  
#SCBCRE

6 PANEL CAP • CANVAS CROWN & BACK • EMBROIDERY & METAL STUD ACCENTS ON CROWN WITH EMBROIDERY ON BACK • FAUX SUEDE BILL WITH EMBROIDERY, APPLIQUE • REINFORCED FRONT • WOVEN HOOK & LOOP CLOSURE

BACK VIEW





**WILD ONE REBEL**  
\*SWLDB

6 PANEL FATIGUE STYLE CAP • EMBROIDERY ON CROWN • DECORATIVE ROPE ON CROWN & EMBOSSED BUTTONS ON SIDES • METAL EYELETS • FAUX LEATHER BILL • RELAXED FRONT • SLIDE BUCKLE CLOSURE WITH TUCK IN



**OILSKIN BIKER ASSORTMENT\*4**  
\*SBK0L4

6 PANEL OILSKIN CAP • EMBROIDERY ON CROWN • REINFORCED FRONT • HOOK & LOOP CLOSURE • ASSORTED TO INCLUDE 4 PCS EACH PER DOZEN

\*3D EMBROIDERY ON CROWN



**STRAW COWBOY HAT**  
**VINTAGE STRIPES & STARS**  
\*SSCTSS

PATRIOTIC COWBOY STRAW HAT • FAUX LEATHER STRAP WITH STARS • PRINTED UNDERBRIM



**STRAW COWBOY HAT**  
**WHITE STRIPES & STARS**  
\*SSCWSS

PATRIOTIC COWBOY STRAW HAT • FAUX LEATHER STRAP WITH STARS • PRINTED UNDERBRIM



**USA BLACK STRAW HAT**  
\*SSPCBL

PATRIOTIC COWBOY STRAW HAT • FAUX LEATHER STRAP WITH STARS • PRINTED UNDERBRIM • PAPER STRAW

**FLORAL PRINT STRAW**

FLORAL PRINT STRAW HATS • ROPE STRAP & MEDALLION • ASSORTED TO INCLUDE 2 PCS EACH PER DOZEN

\*FLORAL PATTERNS MAY VARY SLIGHTLY  
\*ALL STRAW HATS SHOWN ON THIS PAGE ARE PAPER STRAW



**STRAW HAT FLORAL ASST.**  
\*SSHFO-ASST

# NEW LOOK



LOOK UNDERNEATH

COWBOY STRAW HAT SUBLIMATION UNDERVISOR

WESTERN STYLE STRAW HAT • BEADED STRAP • SUBLIMATION PRINTED UNDERVISOR



MILITARY GREEN CAMO  
\*SBEAD5



WILDWEST  
\*SBEAD6



SERAPE  
\*SBEAD7



CHEETAN  
\*SBEAD8



MONARCH  
\*SBEAD9



TIE DYE  
\*SBEAD10





PIXELATED CAMO  
#SBEAD11



SUGAR SKULLS  
#SBEAD12



DEFEND THE 2A  
#SBEAD13



PROUD AMERICAN  
#SBEAD14



WILDED EAGLE  
#SBEAD16



PASTEL TIE DYE  
#SBEAD17



POLY PATTERN BEAR  
#SBEAD18



PINEAPPLE POP  
#SBEAD19

**COWBOY STRAW HAT SUBLIMATION UNDERVISOR**

**WESTERN STYLE STRAW HAT • BEADED STRAP • SUBLIMATION PRINTED UNDERVISOR**



**HULA GIRLS**  
#SBEAD20



**PATRIOT SOARING EAGLE TAN**  
#SBEAD21



**PATRIOT SOARING EAGLE BLACK**  
#SBEAD22



**ZEBRA SUNFLOWERS**  
#SBEAD23



**REEL ANGLER® FLORIDAFLAGE™  
HUNTING**  
#SBEAD24



**REEL ANGLER®  
FLORIDAFLAGE™ PINK**  
#SBEAD25



**REEL ANGLER® FLORIDAFLAGE™  
BLUE / TAN**  
#SBEAD26



**REEL ANGLER® FLORIDAFLAGE™  
BLUE / BLACK**  
#SBEAD27





REEL ANGLER<sup>®</sup> FLORIDA FLAGE™  
PINK / BLACK  
#SBEAD28



GREEN GARDEN TAN  
#SBEAD29



GREEN GARDEN BLACK  
#SBEAD30



CHEETAH BLACK  
#SBEAD31



SPOTS & SERAPE  
#SBEAD32



SLITHER TAN  
#SBEAD33



SLITHER BLACK  
#SBEAD34



HOME OF THE BRAVE  
#SBEAD35



**BACK THE BLUE**  
#SBEAD36



**TEXAS TAN**  
#SBEAD37



**TEXAS BLACK**  
#SBEAD38



**TEXAS PINK**  
#SBEAD39



**TENNESSEE TAN**  
#SBEAD40



**TENNESSEE BLACK**  
#SBEAD41



**TENNESSEE PINK**  
#SBEAD42



**FLORIDA TAN**  
#SBEAD43



**COWBOY STRAW HAT SUBLIMATION UNDERVISOR**

**WESTERN STYLE STRAW HAT • BEADED STRAP • SUBLIMATION PRINTED UNDERVISOR**



**FLORIDA BLACK**  
#SBEAD44



**FLORIDA PINK**  
#SBEAD45



**BRIGHT TIE DYE PINK**  
#SBEAD46



**MONARCH PINK**  
#SBEAD47



**AZTEC RHYTHM**  
#SBEAD48



**WOVEN PATTERN BAND**



**WESTERN STYLE  
STRAW HAT  
WOVEN PATTERN  
BAND**

**STRAW HAT WITH AZTEC BAND**  
#SBND42

**STRAW HAT BLACK WITH  
BLACK & SILVER BAND**  
#SBBW



**WESTERN STYLE STRAW HAT  
• FAUX LEATHER STRAP**



**DARK STRAW**  
#SBD85



**STRAW HAT WESTERN  
WITH TURQUOISE BEADS**  
#SBEAD1



**STRAW HAT WESTERN  
WITH MEDALLION**  
#SBEAD2



**STRAW HAT WESTERN  
WITH GREEN BEADS**  
#SBEAD3



**STRAW HAT DARK  
WESTERN WITH BEADS**  
#SBEAD4

DUE TO THE NATURE OF STRAW HATS, PRODUCT MAY VARY FROM PICTURES SHOWN

5 PANEL POLYFOAM CAP  
 • 3D PUFF INK TEXT  
 ON CROWN • ROPE ON  
 BILL • REINFORCED  
 FRONT • MESH BACK •  
 SNAPBACK CLOSURE



GROOVY SUMMER OF LOVE  
 ORANGE / BLUE  
 #SGRSOL



GROOVY FLOWER POWER  
 BLUE / PINK  
 #SGRFLPW



GROOVY PEACE  
 ORANGE / GREEN  
 #SGRPRCE



VINTAGE PLAID MAMA BEAR\*  
 #SHTVPM

6 PANEL STONE WASHED BUFFALO PLAID CAP • EMBROIDERY ON DISTRESSED APPLIQUE ON CROWN • DISTRESSING ON CAP • RELAXED FRONT • MESH BACK • SNAPBACK CLOSURE

\* FEATURES HORSETAIL OPENING: KEEP YOUR HAIR OFF YOUR NECK WITH HORSETAIL OPENING • RHINESTONE ACCENTS ON CROWN

VINTAGE PLAID PAPA BEAR  
 #SHTVPP

MAMA BEAR GINGHAM RED  
 #SMBGR

6 PANEL GINGHAM CAP • EMBROIDERY ON CROWN • RELAXED FRONT • HOOK & LOOP CLOSURE

RUN LABEL SQUATCH  
 #SRLSASB

6 PANEL CAP • BILL • PIGMENT DYED CROWN & BILL • PRINT ON DISTRESSED APPLIQUE ON CROWN • RELAXED FRONT • DISTRESSING ON BILL • MESH BACK • HOOK & LOOP CLOSURE

6 PANEL BUFFALO PLAID CAP • REINFORCED FRONT • BUFFALO PLAID HOOK & LOOP CLOSURE



BUFFALO PLAID BLANK  
 #68PLD-BFP



OLIVE & BLACK PLAID BLANK  
 #68PLD-OBL



BROWN & BLACK PLAID BLANK  
 #68PLD-BBL



WHITE & BLACK PLAID BLANK  
 #68PLD-WBL



6 PANEL CAP • ALL OVER SUPER BRIGHT SUBLIMATION PRINTED TIE DYE PATTERN • LOW CROWN • REINFORCED FRONT • HOOK & LOOP CLOSURE



**BRIGHT TIE DYE**  
#95TIE-BB

**BLUE TIE DYE**  
#95TIE-BLU

**PASTEL TIE DYE**  
#95TIE-SP

**REVERSE TIE DYE**  
#95TIE-REV

6 PANEL CAP • ALL OVER SUPER BRIGHT SUBLIMATION PRINTED TIE DYE PATTERN • LOW CROWN • REINFORCED FRONT • HOOK & LOOP CLOSURE

6 PANEL CAP • SUBLIMATION PRINTED CROWN & BILL • REINFORCED FRONT • MESH BACK • SNAPBACK CLOSURE



**SUNSET TIE DYE**  
#95TIE-SNR

**UP DOWN MAGENTA TIE DYE / WHITE**  
#95TIEM-MAG

**UP DOWN BLUE TIE DYE / WHITE**  
#95TIEM-BLU

**UP DOWN GREEN TIE DYE / WHITE**  
#95TIEM-GRN

## 90TIE • TIE DYE VISORS

ALL OVER SUBLIMATION PRINT POLYESTER VISOR • COTTON SWEATBAND • PRECURVED BILL • HOOK & LOOP CLOSURE



**BRIGHT TIE DYE**  
#90TIE-BRI

**REVERSE TIE DYE**  
#90TIE-REV

**PASTEL TIE DYE**  
#90TIE-PAS

SUBLIMATION PRINTED  
POLYESTER BUCKET  
• 3 INCH BRIM • UPF  
PROTECTION FACTOR 50+  
• COTTON SWEATBAND •  
HOLOGRAPHIC STICKER  
ON BILL



UP & DOWN BLUE TIE DYE  
#99SUB-BLU



UP & DOWN MAGENTA TIE DYE  
#99SUB-MAG



UP & DOWN GREEN TIE DYE  
#99SUB-GRN



BRIGHT TIE DYE  
#99TIE-BRI



REVERSE TIE DYE  
#99TIE-REV



PASTEL TIE DYE  
#99TIE-PAS



UP & DOWN BLUE  
TIE DYE  
#99JUN-BLU



UP & DOWN GREEN  
TIE DYE  
#99JUN-GRN



PASTEL TIE DYE  
#99JUN-PTD



UP & DOWN MAGENTA  
TIE DYE  
#99JUN-MAG



BRIGHT TIE DYE  
#99JUN-BTD



SUNSET TIE DYE  
#99JUN-SNS

### TIE DYE KIDS BUCKET

SUBLIMATION PRINTED  
BUCKET • FOR AGES 4  
TO 9 • SIZE FITS 53CM  
TO 57CM RANGE • 2.5"  
BRIM • UPF PROTECTION  
FACTOR OF 50+  
COTTON SWEATBAND •  
HOLOGRAPHIC STICKER  
ON BILL

### MINI & TINY ICON BUCKET

SUBLIMATION  
PRINTED BUCKET  
• UPF PROTECTION  
FACTOR OF 50+  
• SUBLIMATED  
UNDERVISOR •  
HOLOGRAPHIC  
STICKER ON BILL



MINI & TINY ICON NAVY PALMS  
#SMTIPN



MINI & TINY ICON FLAMINGO  
WHITE GRAY  
#SMTIFLW



MINI & TINY ICON MARLINS GRAY  
#SMTIMG



## MINI & TINY ICON BUCKET

SUBLIMATION  
PRINTED  
BUCKET • UPF  
PROTECTION  
FACTOR OF 50+  
SUBLIMATED  
UNDERVISOR •  
HOLOGRAPHIC  
STICKER ON  
BILL



MINI & TINY ICON  
LEAF TEAL  
#SMTILTF

MINI & TINY ICON  
LEAF WHITE  
#SMTILFW

CITRUS POP GREEN  
BUCKET  
#99SUB-CPG

SUBLIMATION PRINTED  
BUCKET • UPF PROTECTION  
FACTOR 50+ COTTON  
SWEATBAND • HOLOGRAPHIC  
STICKER ON BILL



SUPPORT FARMERS GREEN  
#SFLGN

6 PANEL PIGMENT DYED CAP • WOVEN  
APPLIQUE ON CROWN • DISTRESSING ON  
SLIGHTLY EXTENDED BILL • RELAXED  
FRONT • SEWN EYELETS • MESH BACK •  
HOOK & LOOP CLOSURE



BEST BUDS  
#SBSTD

6 PANEL WASHED CAP  
• WOVEN APPLIQUE ON  
CROWN • RELAXED FRONT •  
HOOK & LOOP CLOSURE



GANJA UNIVERSITY  
#SGNU420

6 PANEL WASHED CAP • 3D  
EMBROIDERY ON CROWN • RELAXED  
FRONT • HOOK & LOOP CLOSURE



SPACED  
#SSPAC

6 PANEL WASHED CAP • 3D  
EMBROIDERY ON CROWN • RELAXED  
FRONT • HOOK & LOOP CLOSURE



USA FLAG HIGH  
#SHUSAF

6 PANEL CAP • WOVEN APPLIQUE ON  
CROWN • FRONT PANEL WITH HOOK &  
LOOP POCKET • REINFORCED FRONT •  
HOOK & LOOP CLOSURE

LIFT SWEATBAND TO REVEAL A  
FRONT PANEL STASH POCKET WITH  
HOOK & LOOP CLOSURE



PHARM FRESH  
#SPHRMF

6 PANEL CAP • PIGMENT DYED FRONT •  
EMBROIDERY & WOVEN  
APPLIQUE ON CROWN  
• RELAXED FRONT  
• DISTRESSING ON  
SLIGHTLY EXTENDED  
BILL • MESH BACK •  
HOOK & LOOP CLOSURE



GREEN GARDEN  
#SSBGRD

SUBLIMATION  
PRINTED BUCKET •  
UPF 50+  
• HOLOGRAPHIC  
STICKER ON BILL



ROCKSTAR HAIR HAT  
#SRPLRS-BLK

6 PANEL CAP •  
EMBROIDERY ON CROWN  
• DETACHABLE HAIR •  
HOOK & LOOP CLOSURE



# Color My Cap

BRING YOUR CAP TO LIFE WITH THE COLORS YOU LIKE!

**10 MARKERS INCLUDED**

WITH EACH PACKAGED CAP WITH HEADER CARD & PRINTED INSTRUCTIONS



GO  
FROM  
THIS

TO  
THIS!



6 PANEL CAP • 1 COLOR  
PRINT ON PANELS •  
REINFORCED FRONT •  
TALL HOOK & LOOP  
CLOSURE FOR YOUR  
SIGNATURE  
MARKERS CONFORM TO  
ASTM #D4236

SEASCAPE  
\*SCMCS5

**CUSTOM  
NAMEDROP  
EMBROIDERY  
AVAILABLE!**

VEGAS  
\*SCMCLV



AQUARIUM  
\*SCMCA8



MYRTLE  
BEACH  
\*SCMCM8



PENSACOLA  
BEACH  
\*SCMCP8



USA  
\*SCMCS3



ZOO  
\*SCMC20





# Color My Cap

BRING YOUR CAP TO LIFE WITH THE COLORS YOU LIKE!

**10 MARKERS INCLUDED**

WITH EACH PACKAGED CAP WITH HEADER CARD & PRINTED INSTRUCTIONS

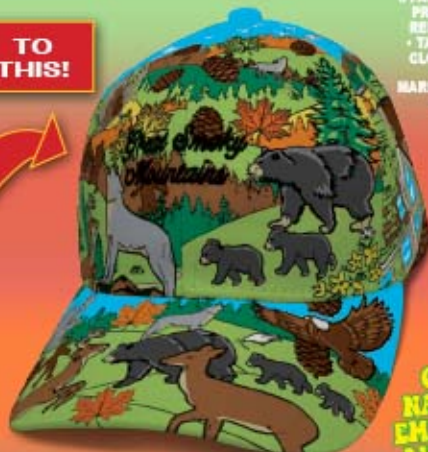


**GO FROM THIS**



**TO THIS!**

**GREAT SMOKY MOUNTAINS**  
\*SCMCSM



6 PANEL CAP • 1 COLOR PRINT ON PANELS • REINFORCED FRONT • TALL HOOK & LOOP CLOSURE FOR YOUR SIGNATURE! MARKERS CONFORM TO ASTM #D4236

**CUSTOM NAMEDROP EMBROIDERY AVAILABLE!**



**USA EXTRA**  
\*SCMCX  
5 PANEL CAP



**MOUNTAINS**  
\*SCMCWT



**BEAR FOR YOUNG ARTISTS**  
\*SCMCBR



**BEAR FOR YOUNG ARTISTS  
GREAT SMOKY MOUNTAINS**  
\*SCMCBR-6SM



# WOW! TOWEL

39" X 12" SUBLIMATION  
PRINTED WATER  
ACTIVATED ICE TOWEL  
WITH VIBRANT AND  
DYNAMIC LIFE-LIKE PRINT.

SOAK IN HOT OR COLD  
WATER, SQUEEZE  
OUT EXCESS WATER,  
SHAKE, AND ENJOY  
INSTANT RELIEF  
FROM NUMB SKULL®  
ICE TOWEL'S COOLING  
TECHNOLOGY. DESIGNED TO  
CONTINUOUSLY COOL AS IT  
DRIES, THE NUMB SKULL®  
ICE TOWEL CAN BE USED  
AGAIN AND AGAIN TO  
PROVIDE COMFORT AND  
RELIEF FROM HEAT, EXERCISE, OR  
PHYSICAL AILMENTS.

**NUMB  
SKULL**  
ICE TOWEL



**FLOWERS**  
\*SNSIT01



**SEA LIFE**  
\*SNSIT02



**HOT PEPPERS**  
\*SNSIT04



**POOL HALL**  
\*SNSIT05



**MILE HIGH**  
\*SNSIT06



**HIBISCUS SHADES**  
\*SNSIT07



**USA STARS 'N STRIPES**  
\*SNSIT08



**SNAKE**  
\*SNSIT09



**SUGAR SKULL**  
\*SNSIT10



**TIE DYE**  
\*SNSIT12



**HUNTING CAMP CAMO**  
\*SNSIT13



**HI-VIS**  
\*SNSIT14



**SCRAPPED EAGLE**  
\*SNSIT16



**HIBISCUS**  
\*SNSIT18



**BLACK**  
\*SNSIT19



**PINK**  
\*SNSIT20



# HOW IT WORKS

SOAK TOWEL  
IN HOT OR COLD WATER



WRING OUT  
EXCESS WATER



SHAKE TO ACTIVATE  
COOLING FIBERS



BLUE  
\*SNSIT21



COLORING MAGIC  
\*SNSIT22



PIRATE FLARE  
\*SNSIT23



SWIRLING FLAMINGOS  
\*SNSIT25



FROM THE DEEP  
\*SNSIT26



TROPICAL WONDERLAND  
\*SNSIT27



ICONIC FLAG  
\*SNSIT28

YOU'LL SCREAM  
WOW WHEN YOU  
FEEL THIS TOWEL!



## NUMB SKULL® ICE TOWEL COUNTER DISPLAY AVAILABLE

NUMB SKULL® ICE TOWEL  
COUNTER DISPLAY  
\*SNSITR

EACH DISPLAY HOLDS 12  
NUMB SKULL® ICE TOWEL

NUMB SKULL® ICE TOWEL NOT  
INCLUDED

DISPLAY APPROXIMATE SIZE:  
HEIGHT • 16IN, WIDTH • 8.5IN



BLACK PRINT ON WHITE  
\*DBD007

BLACK  
\*DBD009

AMERICAN WESTERN  
SKULL+  
\*DBD047

NAVA JO FLOWER  
COW SKULL+  
\*DBD048

PINK MOTORCYCLE  
MOTION+  
\*DBD050

NIGHT GARDEN  
MOON+  
\*DBD051

4 WAY FLEXIBLE HEADBAND • STRETCHES TO FIT MOST HEADS • SUBLIMATION PRINT

† WITH RHINESTONES



PSYCHEDELIC  
GARDEN  
\*HDB001

TATTOO PRINT  
\*HDB002

FLORAL EXPLOSION  
\*HDB003

BIKER BABE  
VELVET  
\*HDB004

RADIANT ELEPHANT  
\*HDB005

80'S MANIA  
\*HDB006



AMERICAN WESTERN  
SKULL  
\*HDB007

PAISLEY NIGHT  
\*HDB008

TRIPPY MUSHROOM  
\*HDB009

SUNFLOWER PASTEL  
TIE DYE  
\*HDB010

HIP PARADISE  
\*HDB011

EXAMPLE  
BACK OF  
PRODUCT



4 WAY FLEXIBLE  
HEADBAND •  
STRETCHES TO FIT  
MOST HEADS  
SUBLIMATION PRINT  
WITH RHINESTONES  
& PONYTAIL  
OPENING ON BACK  
FOR EXTENDED  
COMFORTABLE WEAR



4 WAY FLEXIBLE HEADBAND • BLING RHINESTONES ON FRONT • STRETCHES TO FIT MOST HEADS • PONYTAIL OPENING ON BACK FOR EXTENDED COMFORTABLE WEAR



BLACK  
#DB0001



CROWN  
#DB0002



DA NGEROUS  
#DB0003



IRON BABE  
#BB0004



KISS  
#DB0005



TRIBAL BUTTERFLY  
#DB0006



FLYING HEART  
#DB0007



DRAGONFLY  
#DB0008



CRAZY BITCH  
#DB0009



PINK & WHITE  
BUTTERFLY  
#DB0010



CROSSWINGS  
#DB0011



HD WINGS  
#DB0012



SKULL LOCK-N-LOAD  
#DB0013



SKULL FLOWER  
#DB0014

**Danbando**  
EZ PONYTAIL  
+ four-way stretch spandex headband



RAP A CAP® CAN BE USED FOR MOTORCYCLING, BAD HAIR DAYS, FISHING, HUNTING, BOATING, SPORTS AND ANY INDOOR/OUTDOOR ACTIVITY OR SIMPLY AS AN ACCESSORY. IT GUARDS AGAINST THE SUN'S HARMFUL RAYS, WIND, COLD WEATHER AND WICKS AWAY SWEAT, KEEPING THE WEARER COMFORTABLE IN ALL CONDITIONS. RAP A CAP'S TUBULAR SEAMLESS DESIGN ALLOWS COMPLETE COMFORT AND NEVER LOSES ITS SHAPE. STRETCH IT, PULL IT, TWIST IT, IT CAN BE WORN IN 11 DIFFERENT WAYS, INCLUDING A CAP, SCARF, FACEMASK, HEADBAND, NECKSHADE OR SHAPE IT TO FIT YOUR NEEDS. UPF 20+ PROTECTION.



## RAP A CAP



RED PAISLEY  
\*SRRED



HUNTING CAMP CAMO®  
\*SRCHUN



WAVY USA FLAG  
\*SRCUSW



TIE DYE PAISLEY  
\*SRCTDP

## SCALE SKINZ

SCALESKINZ® FEATURE A SEAMLESS TUBULAR DESIGN THAT CAN BE WORN IN 11 DIFFERENT WAYS, INCLUDING A CAP, SCARF, FACEMASK, HEADBAND, NECK SHADE OR SHAPE IT TO FIT YOUR NEEDS. ANTI-UV MICROFIBER MATERIAL HAS A UV PROTECTION FACTOR (UPF) OF 20+



AMERICAN TARPON  
\*SSANTP



DOLPHIN  
\*SSDOLP



BASS  
\*SSZBAS



MARLIN  
\*SSMARL



REDFISH  
\*SSREDF

50 // MULTI-USE

\*PACKAGING MAY VARY





FRONT VIEW



BACK VIEW

PACKAGED ASSORTMENT  
INCLUDES 3 SHOP RAGS  
WITH ASSORTED PRINT

DIRTY DAN'S  
PRINTED SHOP RAGS  
\*SDDPSR



FRONT VIEW



BACK VIEW

PACKAGE INCLUDES 2  
SHOP RAGS WITH PRINT

REEL ANGLER®  
PRINTED SHOP RAGS  
\*SRA PSR



\*PACKAGING MAY VARY

MULTI-USE // 51 //

DANBANNA® DELUXE  
**PLATINUM**  
 EDITION

DYNAMIC AND LIFE-LIKE SUBLIMATION PRINTED DESIGNS ON PLUSH POLYESTER MATERIAL • DELUXE TERRY CLOTH SWEATBAND • SOFT MESH LINING INSIDE TIES AND TAIL



FELLOW AMERICA  
 \*PLAT-STRO03



CATACOMBS  
 \*PLAT-STRO05



ROSES & BARBS  
 \*PLAT-STRO09



USA STARS N STRIPES  
 \*PLAT-STRO14



DREADED LION  
 \*PLAT-STRO15



ROASTED CHIEF  
 \*PLAT-STRO16



REPEAT USA  
 \*PLAT-STRO19



TIE DYE  
 \*PLAT-STRO21



SILVER DRAGON  
 \*PLAT-STRO23



FREEDOM RIDER  
 \*PLAT-STRO24



TORN CONTRAST GREEN  
 \*PLAT-STRO25



TORN CONTRAST MAGENTA  
 \*PLAT-STRO26



TORN CONTRAST ORANGE  
 \*PLAT-STRO27



VINTAGE AMERICANA EAGLE  
 \*PLAT-STRO29



BIKER NATION  
 \*PLAT-STRO30



DANBANNA® DELUXE  
**PLATINUM**  
 EDITION

DYNAMIC AND LIFE-LIKE SUBLIMATION PRINTED DESIGNS ON PLUSH POLYESTER MATERIAL • DELUXE TERRY CLOTH SWEATBAND • SOFT MESH LINING INSIDE TIES AND TAIL



BIKER BY CHOICE  
 \*PLAT-STRO31



RIDE THE WIND  
 \*PLAT-STRO32



MAYAN SACRIFICE  
 \*PLAT-STRO33



SUGAR SKULL  
 \*PLAT-STRO34



ALIEN WALL  
 \*PLAT-STRO35



TRIBAL TOTEM  
 \*PLAT-STRO36



BACK THE BLUE  
 \*PLAT-STRO37



SKULL BREACH  
 \*PLAT-STRO38



DA KRAKEN  
 \*PLAT-STRO39



REEL A HOLER®  
 FLORIDA FLAG™ HUNTING  
 #PLAT-BAFF6



QUALITY 100% COTTON STRETCH MATERIAL • TALL HEADBAND • EXTRA LONG TIES & STRETCH MATERIAL MADE FOR A PERFECT FIT • DOUBLE SIDED TIES AND TAIL • ULTRA SOFT TERRY CLOTH SWEATBAND



BLACK  
 \*SELECT-STRO01



BLACK / ORANGE  
 \*SELECT-STRO02



**DANBANNA**  
**DELUXE**

QUALITY 100% COTTON  
MATERIAL • DOUBLE  
SIDED TIES AND TAIL •  
ULTRA SOFT TERRY CLOTH  
SWEATBAND



**SKULL PILE-UP**  
\*DELUXE-COL4202



**SKULLS & CROSSBONES**  
\*DELUXE-COLX30



**AMERICAN FLAG**  
\*DELUXE-COLX36



**SOLID BLACK**  
\*DELUXE-COLX50



**PIXELATED CAMO**  
\*DELUXE-COLX69



**AMERICAN EAGLE**  
\*DELUXE-COLX86



**SKULL PAISLEY**  
\*DELUXE-COL006



**SKULL PAISLEY ORANGE**  
\*DELUXE-COL019



**SKULL RIDER**  
\*DELUXE-COL107



**PIRATE SKULLS**  
\*DELUXE-COL112



**RIDE THE WIND**  
\*DELUXE-COL118



**BLACK / ORANGE**  
\*DELUXE-COL300



**ROADSIDE PHARAOH**  
\*DELUXE-COL314

**DANBANNA**  
**DELUXE**





**NAVY BLUE PAISLEY**  
\*DELUXE-CDL315



**EAGLE WIND**  
\*DELUXE-CDL320



**TRUE BLUE PATRIOT**  
\*DELUXE-CDL321



**RIDE HARD RIDE FAST**  
\*DELUXE-CDL322



**LEGEND LIVES**  
\*DELUXE-CDL323



**LADY BIKER MOTOR**  
\*DELUXE-CDL324



**JUST RIDE**  
\*DELUXE-CDL325



**LIVE FREE RIDE FREE**  
\*DELUXE-CDL327



**MAGENTA PAISLEY**  
\*DELUXE-CDL409



**TIE DYE PAISLEY**  
\*DELUXE-CDL410



**RED PAISLEY**  
\*DELUXE-CDL413



**BLACK/MAGENTA PAISLEY**  
\*DELUXE-CDL414



**BLACK/TEAL PAISLEY**  
\*DELUXE-CDL415



**BLACK/RED PAISLEY**  
\*DELUXE-CDL417



**CHROME ANGEL**  
\*DELUXE-CDL425



**STAR SPANDED**  
\*DELUXE-CDL432



**STAR SKULL**  
\*DELUXE-CDL434



**PATRIOTIC**  
\*DELUXE-CDL441



**ORANGE PAISLEY**  
\*DELUXE-CDL445



**MADNESS**  
\*DELUXE-CDL450



HEAR THUNDER  
\*DELUXE-CDL455



BLACK / WHITE  
PAISLEY  
\*DELUXE-CDL457



PROTECT YOUR RIGHTS  
\*DELUXE-CDL462



IRON SKULL FIRE  
\*DELUXE-CDL463



RIGHTEOUS RIDE  
\*DELUXE-CDL464



WIDE OPEN  
\*DELUXE-CDL465



JOLLY ROGER  
\*DELUXE-CDL466



SNAKE EYES STRIKE  
\*DELUXE-CDL472



VINTAGE EAGLE SHIELD  
\*DELUXE-CDL473



THE RIDE  
\*DELUXE-CDL474



JUST RIDE GRAY FLAMES  
\*DELUXE-CDL476



HERITAGE- FTW  
\*DELUXE-CDL481



FTW- EAGLE  
\*DELUXE-CDL483



AMERICAN RF  
\*DELUXE-CDL484



RIDE FOREVER  
\*DELUXE-CDL493



WE THE PEOPLE  
\*DELUXE-CDL498



AMERICAN THUNDER  
\*DELUXE-CDL506



RIDE AMERICA  
\*DELUXE-CDL513



DESPERADO  
\*DELUXE-CDL514



LAUGHING INFERNO  
\*DELUXE-CDL516



I RIDE  
\*DELUXE-CDL518





**GREY RIDER**  
\*DELUXE-CDL519



**AXE GRINDER**  
\*DELUXE-CDL521



**NATIVE WRATH**  
\*DELUXE-CDL531



**TAT SKULL**  
\*DELUXE-CDL534



**DONT TREAD ON MY RIGHTS**  
\*DELUXE-CDL537



**KOLD KREW**  
\*DELUXE-CDL538



**SNAKE OIL**  
\*DELUXE-CDL539



**FIREY START PINK**  
\*DELUXE-CDL540



**VINTAGE AMERICANA**  
\*DELUXE-CDL541



**DB CAFE RACEWAY**  
\*DELUXE-CDL543



**THE MECHANIC**  
\*DELUXE-CDL629



**BOLTS & FLAMES**  
\*DELUXE-CDL631



**LIVING THE DREAM**  
\*DELUXE-CDL632



**BULL RIDER**  
\*DELUXE-CDL637



**SKULL VINES**  
\*DELUXE-CDL638



**TEMPTATION**  
\*DELUXE-CDL642



**SUGAR SKULL**  
\*DELUXE-CDL643



**SURRENDER 2**  
\*DELUXE-CDL646



**AMERICAN IRON**  
\*DELUXE-CDL650



**HOT HEAD**  
\*DELUXE-CDL651

QUALITY 100% COTTON MATERIAL • DOUBLE SIDED TIES AND TAIL • ULTRA SOFT TERRY CLOTH SWEATBAND



**NATIVE WITCHES**  
#DELUXE-CDL652



**TOXIC SKULLS**  
#DELUXE-CDL653



**TWISTED RIDER**  
#DELUXE-CDL654



**TWISTED HEART**  
#DELUXE-CDL656



**BIKER GIRL**  
#DELUXE-CDL657



**SILVER FLAMES & SKULLS**  
#DELUXE-CDL658



**MADMAN**  
#DELUXE-CDL659



**REALTREE EDGE®**  
#DELUXE-CDL704



**REALTREE EDGE®**  
BEER IS GREAT™  
#DELUXE-CDL705



**JUST RIDE PISTONS**  
#DELUXE-CDL706







MODEL IS WEARING  
#CT086 SUGAR SKULL

# Chopp Top

DOO WRAP

PREMIUM HEADWRAP • TERRYCLOTH SWEATBAND • DOUBLE SIDED TAIL • ADJUSTABLE HOOK & LOOP CLOSURE WITH TUCK IN  
† WITH RHINESTONES \*SUBLIMATION PRINTED



SOLID BLACK  
\*CT003



PINK SKULLIES †  
\*CT027



HEART BREAKER †  
\*CT039



RED SKULLIES  
\*CT029



PAISLEY BURST BLACK & RED †  
\*CT055



SUGAR SKULL †  
\*CT056



MEDUSA †  
\*CT059



USA STARS N STRIPES  
\*CT042



SCRAP METAL EAGLE  
\*CT0046



AMERICA N EAGLE  
\*CT0041



SKULLS IN FLAMES  
\*CT0047

**BLOCK OUT THE SUN'S  
HARMFUL RAYS &  
ENJOY THE  
OUTDOORS**

**REEL-  
ANGLER®  
FLORIDAFLAGE**

  
**UPF  
40+**

**EXCLUSIVE  
SUBLIMATION  
PRINTED PATTERN  
ON COMFORTABLE  
STRETCH FABRIC •  
UPF PROTECTION  
FACTOR OF 40+  
EXCELLENT  
PROTECTION  
FROM THE  
SUN FOR A  
MULTITUDE  
OF OUTDOOR  
ACTIVITIES.**



**SOLAR SLEEVE - REEL ANGLER® FLORIDAFLAGE™  
\*SOLSFF**



**SOLAR SLEEVE - REEL ANGLER® SALT WATER  
\*SOLS12**



**SOLAR SLEEVE - HIGH LIFE  
\*SOLS13**



**SOLAR SLEEVE - USA FLAG  
\*SOLS14**



**SOLAR SLEEVE - BLACK  
\*SOLS16**





SOLAR SLEEVE - TIE DYE  
\*SOLSL7



SOLAR SLEEVE - KILLER CLOWNS  
\*SOLSL8



SOLAR SLEEVE - POW \* MIA  
\*SOLSL9



SOLAR SLEEVE - VIETNAM VETERAN  
\*SOLSL10



SOLAR SLEEVE - DON'T TREAD ON ME  
\*SOLSL11



SOLAR SLEEVE - REALTREE EDGE®  
\*SOLSL12

ONE SIZE FITS MOST

GREAT FOR ALL CLIMATES  
 • SKULSKINZ NEOPRENE  
 FACEMASKS • PROTECT SKIN  
 FROM ALL CONDITIONS • FEATURE  
 VENT HOLES FOR EARS & MOUTH  
 • REVERSIBLE TO A SOLID COLOR  
 • ADJUSTABLE HOOK & LOOP  
 CLOSURE • CAN BE WORN WITH  
 GOGGLES AND/OR HELMETS



# SKULSKINZ

NEOPRENE FACE MASK



GOON FACE  
 \*SFAGO0



WINTER KING  
 \*SFAWK1



PURPLE WOMAN  
 \*SFAWPO



EVIL CLOWN  
 \*SFAEVC



RED CLOWN FULL FACE  
 \*SFMRLC



PIXELATED CAMO  
 \*SFAPXC



BLACK & WHITE SKULL  
 \*SFAWBS



SOLID BLACK  
 \*SFABLK



MUZZLE  
 \*SFAWUZ



WICKED SKULL  
 FULL FACE  
 \*SFMWSK



WARBIRD  
 \*SFAWAR



STEEL SKULL  
 \*SFASTS



LUCHA LIBRE  
 \*SFALIB



REEL ANGLER®  
 FLORIDAFLA GE™ HUNTING  
 \*SFAFFH



FIGHTIN' WARBIRD  
 \*SFAFWB





GREAT FOR ALL CLIMATES  
 • SKULSKINZ NEOPRENE  
 FACEMASKS • PROTECT SKIN  
 FROM ALL CONDITIONS • FEATURE  
 VENT HOLES FOR EARS & MOUTH  
 • REVERSIBLE TO A SOLID COLOR  
 • ADJUSTABLE HOOK & LOOP  
 CLOSURE • CAN BE WORN WITH  
 GOGGLES AND/OR HELMETS

# SKULSKINZ

NEOPRENE FACE MASK



POW WARRIOR  
 \*SFAPOW



FEELING GREEN  
 \*SFAFOR



OLD HAG  
 \*SFAHAG



SMOKING SKULL  
 \*SFAIMO



WEEKEND  
 \*SFAWKN



SHADED SKULL  
 \*SFAHA



SCARY GATOR  
 \*SFASSO



DREADED LION  
 \*SFALIO



TOXIC  
 \*SFAFOX



FLAME ORANGE  
 \*SFAORG



3D SKULL MOUTH  
 FULL FACE  
 \*S3FSMF



BLACK HALF FACE  
 \*SHFNBL



STRIPES & STARS HALF  
 FACE MASK  
 \*STRSTA



SHADED SKULL HALF  
 FACE MASK  
 \*SK30BW



RED CLOWN HALF FACE  
 \*SFMRC

\*PACKAGING MAY VARY

# Action CRITTER CAPS™

## Big Eyes

PERFECT FOR ZOOS, AQUARIUMS & MORE!

PRESS OUR FEET AND WATCH US MOVE!  
 FEATURE MOVEABLE PARTS WITH THE PRESS OF FEET • EXCLUSIVE DESIGN PLUSH STUFFED THEMED HATS • LINED WITH FLEECE • COMBINATION OF FUR AND FLEECE ACCENTS

SQUEEZE ME & WATCH ME MOVE!



ELEPHANT  
 \*SABECR-ELE



DEER  
 \*SABECR-DER



TURTLE  
 \*SABECR-TUR



BEAVER  
 \*SABECR-BEA



GATOR  
 \*SABECR-GAT



SASQUATCH  
 \*SABECR-SAS



ABOMINABLE  
 \*SABECR-ABN

DUE TO THE NATURE OF ACTION CRITTERS' MOVEMENT MECHANISM, SOME ADJUSTMENT MAY BE NEEDED FOR FULL MOVEMENT TO FUNCTION.



# Action CRITTER CAPS™ Big Eyes

PERFECT FOR ZOOS,  
AQUARIUMS & MORE!

PRESS OUR FEET AND  
WATCH US MOVE!  
FEATURE MOVEABLE  
PARTS WITH THE PRESS  
OF FEET • EXCLUSIVE  
DESIGN PLUSH STUFFED  
THEMED HATS •  
LINED WITH FLEECE •  
COMBINATION OF FUR  
AND FLEECE ACCENTS



SQUEEZE ME & WATCH ME  
**MOVE!**



**HIPPO**  
\*SABECR-HIP



**LEOPARD**  
\*SABECR-LEO



**BLACK BEAR**  
\*SABECR-BLB



**LION**  
\*SABECR-LIO



**UNICORN**  
\*SABECR-UNI



**SHARK**  
\*SABECR-SHA

# Action CRITTER CAPS™

## Big Eyes

PERFECT FOR ZOOS,  
AQUARIUMS & MORE!

PRESS OUR FEET AND  
WATCH US MOVE!  
FEATURE MOVEABLE  
PARTS WITH THE PRESS  
OF FEET • EXCLUSIVE  
DESIGN PLUSH STUFFED  
THEMED HATS •  
LINED WITH FLEECE •  
COMBINATION OF FUR  
AND FLEECE ACCENTS



SQUEEZE ME & WATCH ME  
**MOVE!**



GOAT  
#SABEGR-GOA



RAINBOW SASQUATCH  
#SABEGR-RSQ



DOLPHIN  
#SABEGR-DOL



WHALE  
#SABEGR-WHA



HORSE  
#SABEGR-HSE



EAGLE  
#SABEGR-EAG

DUE TO THE NATURE  
OF ACTION CRITTERS'  
MOVEMENT MECHANISM,  
SOME ADJUSTMENT  
MAY BE NEEDED FOR  
FULL MOVEMENT TO  
FUNCTION.



# Action CRITTER CAPS<sup>®</sup> Big Eyes

PERFECT FOR ZOOS,  
AQUARIUMS & MORE!

PRESS OUR FEET AND  
WATCH US MOVE!  
FEATURE MOVEABLE  
PARTS WITH THE PRESS  
OF FEET • EXCLUSIVE  
DESIGN PLUSH STUFFED  
THEMED HATS •  
LINED WITH FLEECE •  
COMBINATION OF FUR  
AND FLEECE ACCENTS



SQUEEZE ME & WATCH ME  
**MOVE!**

RACCOON  
\*SABECR-RAC



BAT  
#SABECR-BAT



TIGER  
\*SABECR-TIG



FOX  
#SABECR-FOX



PIG  
\*SABECR-PIG



CHICK  
\*SABECR-CHK



with  
**BIG OVERSIZED**  
GLITTER EYES!



# CRITTER CAPS Big Eyes

EXCLUSIVE DESIGN PLUSH STUFFED THEMED HATS • LINED WITH FLEECE • COMBINATION OF FUR AND FLEECE ACCENTS



**BORIS BLACK BEAR**  
\*SCRBIG-BLK



**BOBBY BROWN BEAR**  
\*SCRBIG-BRO



**ARTHUR ALLIGATOR**  
\*SCRBIG-GAT



**LEO LION**  
\*SCRBIG-LIO



**MARKY MONKEY**  
\*SCRBIG-MON



**MIGHTY MOOSE**  
\*SCRBIG-MSE



**PIG**  
\*SCRBIG-PIG



**SAMMY SEAL**  
\*SCRBIG-SEA



**RANGER BEAR**  
\*SCRBIG-RGB



**ABOMINABLE**  
\*SCRBIG-ABM



**SASQUATCH**  
\*SCRBIG-SAS



**SANTA SASQUATCH**  
\*SCRBIG-SSQ



**SLICK SHARK**  
\*SCRBIG-SHA



**PIRATE PARROT**  
\*SCRBIG-PPT



**TERRY TIGER**  
\*SCRBIG-TIG





UNICORN  
\*SCRBIG-UNI



TURKEY  
\*SCRBIG-TKY



TANYA TURTLE  
\*SCRBIG-TUR



WALLY WOLF  
\*SCRBIG-WOL



JACK O'LANTERN  
\*SCRBIG-JOL



EVIL EYE CLOWN  
\*SCREBE-EVC



EVIL HATTER  
\*SCRBIG-EVN



EVIL JESTER  
\*SCRBIG-EVJ



WITCH  
\*SCRBIG-WIT



SNOWMAN  
\*SCRBIG-SNO



SANTA  
\*SCRBIG-SAN



TIN SOLDIER  
\*SCRBIG-TNS



SELECT CRITTERS FEATURE  
EMBROIDERED EYES

FRANK  
\*SCRITT-FRA

PUMPKIN  
\*SCRITT-PUM



## ANIMAL KNT BEANIE

JACQUARD STYLE  
KNT BEANIE • ANIMAL  
DESIGNS • DESIGNS  
SOLD INDIVIDUALLY



BEAR  
"SAKBEA



DEER  
"SAKDER



MOOSE  
"SAKMSE



WOLF  
"SAKWOL

SOFT STRETCH POLYESTER BEANIE LINED WITH FLEECE • SUBLIMATION PRINT • "DAKOTA DAN" TAB OFFSET ON FRONT • REVERSIBLE TO BLACK



POLY PATTERN BEAR  
ROYAL BEANIE  
#SPPBBKB



POLY PATTERN  
BUFFALO MAROON BEANIE  
#SPPBMBKB



POLY PATTERN  
DEER BROWN BEANIE  
#SPPDBKB

ALL SUBLIMATION BEANIE  
STYLES SHOWN IN THIS AREA  
ARE REVERSIBLE TO BLACK



POLY PATTERN MOOSE  
GREEN BEANIE  
#SPPMGKB



POLY PATTERN WOLF  
ROYAL BEANIE  
#SPPWRKB



REEL ANGLER® FLORIDA FLAGE™  
HUNTING BEANIE  
#SRAFF-HCB





## 42CUF • CUFFED BEANIES

12" ACRYLIC KNIT BEANIES WITH CUFF • STRETCHES TO FIT MOST HEADS



BLACK  
#42CUF-BLK

NAVY  
#42CUF-NAV

COL. BLUE  
#42CUF-COL

RED  
#42CUF-RED

ORANGE  
#42CUF-ORG

FOREST GREEN  
#42CUF-FST

PINK  
#42CUF-PIK

ROYAL  
#42CUF-ROY

FLAME ORANGE  
#42CUF-FLO

## 44KNT • KNIT BEANIES

8" ACRYLIC KNIT BEANIES • STRETCHES TO FIT MOST HEADS



BLACK  
#44KNT-BLK

NAVY  
#44KNT-NAV

ROYAL  
#44KNT-ROY

COL. BLUE  
#44KNT-COL

HEATHER  
#44KNT-HEA

OLIVE  
#44KNT-OLI



FOREST GREEN  
#44KNT-FST



GRAY  
#44KNT-GRA



RED  
#44KNT-RED



CHARCOAL  
#44KNT-CHA



HI-VIS  
#44KNT-HVY

RANDOM ASSORTMENT, NO J-HOOK • NO COLORS ARE GUARANTEED • NO CHOOSING COLORS • ASSORTMENT MAY OR MAY NOT INCLUDE COLORS SHOWN



CUFFED BEANIE ASST.  
#42CUF-SS-ASST



KNIT BEANIE ASST.  
#44KNT-SS-ASST

TROOPER STYLE CAP • LINED WITH FAUX RABBIT FUR • ADJUSTABLE CHIN STRAP • EAR FLAPS WITH VENTS • RUBBER "DAKOTA DAN"™ TAB ON BACK



POLY PATTERN  
BEAR ROYAL  
\*DAKOTA-PPBB

POLY PATTERN  
MOOSE GREEN  
\*DAKOTA-PPMG

POLY PATTERN  
BUFFALO MAROON  
\*DAKOTA-PPBM

POLY PATTERN  
WOLF ROYAL  
\*DAKOTA-PPWR

BUFFALO PLAID  
\*DAKOTA-BFP

CASCADES GRAY  
\*DAKOTA-CAG



BUFFALO PLAID  
OLIVE / BLACK  
\*DAKOTA-BPOB

BUFFALO PLAID  
BROWN / BLACK  
\*DAKOTA-BPBB

WESTERN STITCH  
\*DAKOTA-WST

BLACK  
\*DAKOTA-BLK

KNAKI  
\*DAKOTA-KHA

CHOCOLATE  
\*DAKOTA-BRN

SAGE  
\*DAKOTA-SAG



PINK  
\*DAKOTA-PIN

DARK BROWN  
\*DAKOTA-DKB

CAMEL  
\*DAKOTA-CCA

MOSS  
\*DAKOTA-MOS

CHARCOAL  
\*DAKOTA-CHA

FLAME ORANGE  
\*DAKOTA-SAF



HIGH VISIBILITY  
YELLOW  
\*DAKOTA-HVY

BEAR  
\*DAKOTA-BEA

DEER  
\*DAKOTA-BER

MOOSE  
\*DAKOTA-MSE

WOLF  
\*DAKOTA-WOL

CASCADES BROWN  
\*DAKOTA-CBR



TROOPER STYLE CAP • LINED WITH FAUX RABBIT FUR • ADJUSTABLE CHIN STRAP • EAR FLAPS WITH VENTS • RUBBER "DAKOTA DAN"™ TAB ON BACK



ZIGZA 6 GREEN  
BROWN  
\*DAKOTA-ZZ

REVERSED CASCADES  
GRAY  
\*DAKOTA-RCA

INDIGENOUS TEAL  
\*DAKOTA-DIT

ROUGH DIAMOND  
\*DAKOTA-RDI

NAYAN  
\*DAKOTA-MAY

DIGITAL CAMO  
\*DAKOTA-DCN



BROWN  
\*DAKOTA-BRF

HUNTING CAMP CAMO®  
\*DAKOTA-HCC

HUNTING CAMP CAMO®  
ORANGE  
\*DAKOTA-OCM

TEMPLE BROWN  
\*DAKOTA-TBR

TEMPLE BLUE  
\*DAKOTA-TBU

TEMPLE PINK  
\*DAKOTA-TPNK

TEMPLE TEAL  
\*DAKOTA-TTL

## DAKOTA DAN® FUR HEADBAND

FAUX FUR HEADBAND FOR COLD CLIMATES • ELASTIC BAND FOR STRETCH & COMFORT



BLACK  
\*FURBAN-BLK

RED FOX  
\*FURBAN-RFX

BROWN  
\*FURBAN-BRN

WHITE  
\*FURBAN-WHI

## DAKOTA DAN® FUR HAT

FAUX FUR HAT FOR COLD CLIMATES



BLACK  
\*FURKOTA-BLK

WHITE  
\*FURKOTA-WHI

RED FOX  
\*FURKOTA-RFX

BROWN  
\*FURKOTA-BRN

6 PANEL CAP • 100% COTTON • FAUX LEATHER STRAP WITH BUCKLE CLOSURE



DENIM / AMERICAN FLAG  
#SBLAMF





6 PANEL COTTON CAP • RHINESTONES ON CROWN AND BILL • REINFORCED FRONT • HOOK & LOOP CLOSURE



PEACOCK  
#SBLPCK



ROSE  
#SBLRSE



BUTTERFLY  
#SBLBYF



OWLS  
#SBLOWL



LEOPARD LOVE  
#SBLLLV



LEOPARD  
#SLEOBL



BOSS BITCH  
#SBSBBL



TURTLE  
#STURBL

6 PANEL DENIM  
CAP •  
RHINESTONES  
ON CROWN  
AND  
BILL •  
REINFORCED  
FRONT •  
HOOK & LOOP  
CLOSURE



BLACK CAT DENIM  
#SBLBC2

CHOOSE YOUR CAP! RHINESTONE  
BLING SHOWN ON #SBLAM-NWH

PLEASE SPECIFY CAP & COLOR TO  
YOUR SALES REPRESENTATIVE WHEN  
ORDERING

BLING BEAR  
FAMILY  
#BBFAML



CHOOSE YOUR CAP! RHINESTONE  
BLING SHOWN ON #SBLAM-NWH

PLEASE SPECIFY CAP & COLOR  
TO YOUR SALES REPRESENTATIVE  
WHEN ORDERING

BLING MAMA BEAR  
#BMAMAB



DUE TO THE NATURE OF BLING  
CAPS, THESE CAPS ARE SOLD AS IS.

BLING // 75 //

**6** 3/4  
FEET  
TALL

CAN HOLD 30  
BIG EYE CRITTER<sup>®</sup>,  
DAKOTA DAN<sup>®</sup>,  
OR BUCKET HATS



CAN HOLD 24  
STRAW HATS



**DOME ROUNDED HAT RACK**  
#SDBRHR



**STRAW HAT RACK**  
#SSTHR



**FLOOR RACK**  
2 C-RINGS, 3 5-HOOK C-RINGS  
#SSPINHR

HEADWEAR NOT INCLUDED  
RACK IS STATIONARY WITH ROTATIONAL LEVELS THAT MAKE IT EVEN EASIER FOR CUSTOMERS TO FIND THEIR PERFECT HAT.



4 3/4  
FEET  
TALL



**SHORT FLOOR RACK  
SINGLE SIDED**  
\*SCSS1A

- HEAVY METAL BASE WITH 8 SHELVES & SIGN HOLDER
- HOLDS 64 CAPS
- HEADWEAR NOT INCLUDED

4 3/4  
FEET  
TALL



**SHORT FLOOR RACK  
DOUBLE SIDED**  
\*SCDSRA

- HEAVY METAL BASE WITH 18 SHELVES & SIGN HOLDER
- HOLDS 144 CAPS
- HEADWEAR NOT INCLUDED

6 1/2  
FEET  
TALL



**FLOOR TOWER RACK**  
\*SCPTOW

- HEAVY METAL BASE WITH 12 SHELVES & SIGN HOLDER
- HOLDS 96 CAPS AND A VARIETY OF DANBANNAS®, DANBANNA® DELUXES OR BEANIES
- HEADWEAR NOT INCLUDED

\*HEADERS NOT INCLUDED ON DISPLAYS

THIS UNIVERSAL DISPLAY RACK MEASURES NEARLY 6 FEET IN HEIGHT AND IS READY FOR ALL YOUR CAPSMITH PRODUCT DISPLAY NEEDS. THE RACK IS MOBILE WITH LOCKING WHEELS AND A STURDY STEEL FRAME. ALL THE SHELVES ARE INTERCHANGEABLE CREATING LIMITLESS ARRANGEMENTS! TRANSITION FROM SUMMER TO FALL/WINTER IN NO TIME. SIGN DISPLAY ON TOP IS INTERCHANGEABLE TO CREATE ANY THEMED RACK. ORDER ANY OF THE PRE-BUILT OPTIONS BELOW, OR BUILD YOUR OWN USING OUR CUSTOM PARTS LIST AND ACCESSORIES. \*ASK ABOUT OUR CUSTOM HEADERS

VIEW ALL  
STRAW HATS  
ON PG 33-39

WESTERN  
STRAW HATS



ALL SEASON FLOOR DISPLAY  
\*SALLSE

- 1 BASE WITH LOCKING WHEELS
- 7 HAT RACKS
- 1 3-HOOK
- 1 2-HOOK
- 2 18-HOLE BARS
- 36 D-TYPE INSERTS



FALL/WINTER FLOOR DISPLAY  
\*SFALLB

- 1 BASE WITH LOCKING WHEELS
- 5 HAT RACK
- 1 3-HOOK
- 1 2-HOOK
- 3 18-HOLE BARS
- 54 D-TYPE INSERTS



SPRING/SUMMER FLOOR DISPLAY  
\*SSUMMB

- 1 BASE WITH LOCKING WHEELS
- 7 HAT RACKS
- 3 3-HOOK



STRAW TOWER FLOOR DISPLAY  
\*SST4SH

- HEAVY METAL BASE WITH 4 SHELVES
- FITS 6 STRAW HATS PER SHELF
- HEADWEAR NOT INCLUDED

UNIVERSAL TOPPER RACK  
\*STRACK

- 2 FEET IN HEIGHT AND ATTACHES TO THE TOP OF MOST RETAIL T-SHIRT RACKS
- ALL THE SHELVES ARE INTERCHANGEABLE
- HEADWEAR NOT INCLUDED

BUILD-YOUR-OWN

T-SHIRTS  
& HATS



HAT RACK  
\*SHRACK



2-HOOK  
\*SH2HOK



3-HOOK  
\*SH3HOK



18-HOLE WITH 18  
D-TYPE INSERTS  
\*SHDDRK



SHIRT RACK  
BASE  
\*SSRACK



BASE WITH LOCKING  
WHEELS  
\*SLRACB





SHIPPING  
BOX

**COUNTER DISPLAY  
SHIPPER BOX  
\*SCOUT**

- DISPLAY BOX CONVERTS INTO A 12 OR 24 PIECE COUNTER DISPLAY BY TEARING OFF PERFORATED LID AND INSERTING SUPPLIED PRE-PRINTED HEADER CARD.
- HEADER CARD IS ALSO AVAILABLE CUSTOM PRINTED BY SPECIAL ORDER.
- HEADWEAR NOT INCLUDED

VIEW ALL NUMB SKULL®  
ICE TOWEL ON PGS 46-47



**NUMB SKULL®  
ICE TOWEL  
COUNTER  
DISPLAY  
\*SNSITR**

EACH DISPLAY HOLDS 12  
NUMB SKULL® ICE TOWEL •  
NUMB SKULL® ICE TOWEL NOT  
INCLUDED

DISPLAY APPROXIMATE SIZE:  
HEIGHT-16IN, WIDTH-8.5IN

**BEER IS  
GREAT™ CLIP  
STRIP  
\*SHEADE-BIG**



EACH DISPLAY HOLDS 12  
BEER IS GREAT™ REALTREE  
EDGE® DANBANNA®

BEER IS GREAT™ REALTREE  
EDGE DANBANNA® NOT  
INCLUDED WITH DISPLAY



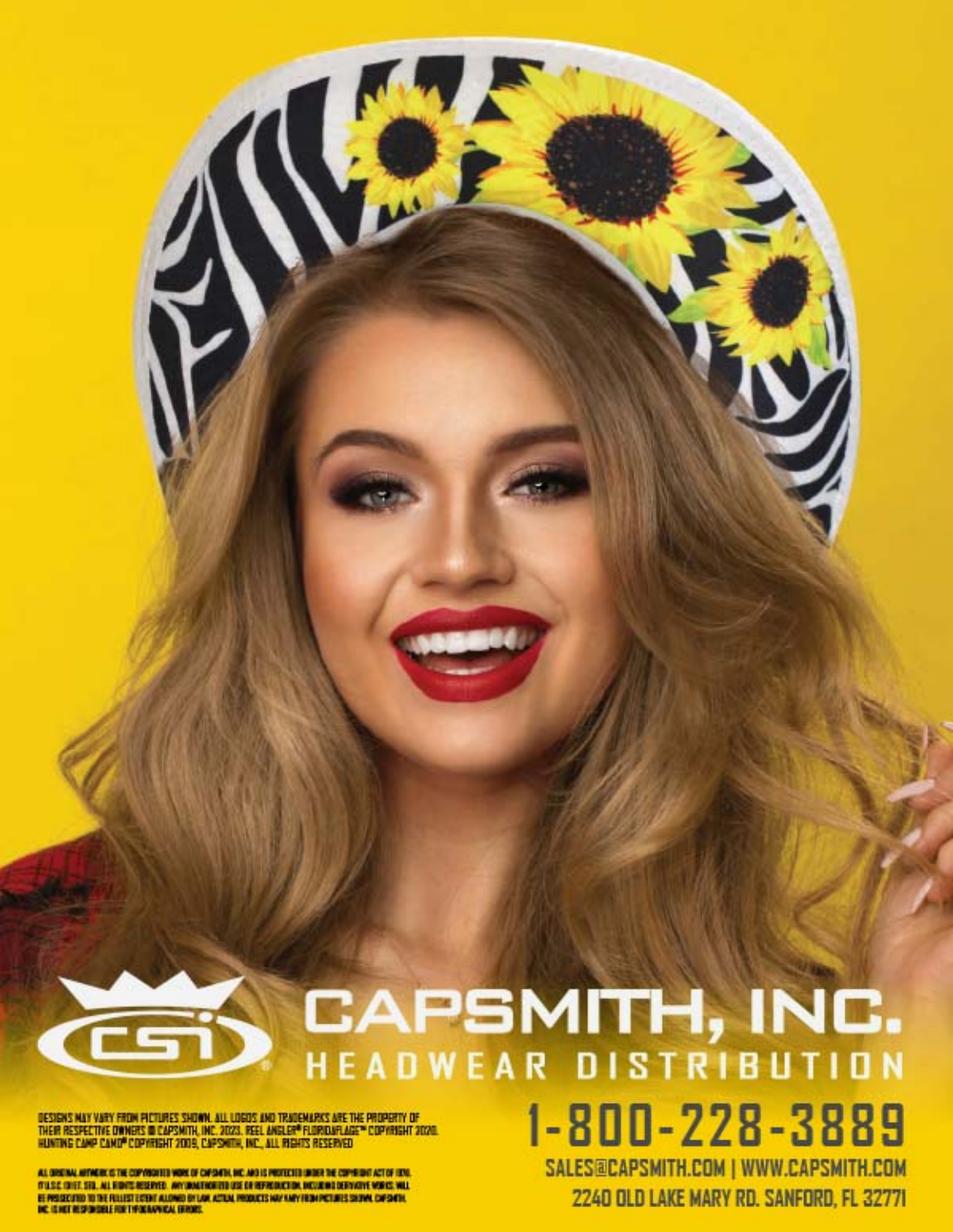
**FLOOR RACKS**

- \*S2C1HA • 2 C-RINGS, 1H-RACK
- \*S1C2HA • 1 C-RING, 2 H-RACKS
- \*S3C0HA • 3 C-RINGS, 0 H-RACK
- \*S0C3HA • 0 C-RING, 3 H-RACKS

- \*S2C1WHR • 2 C-RINGS, 1 WIDE H-RACK
- \*S1C2WHR • 1 C-RING, 2 WIDE H-RACKS
- \*S0C3WHR • 0 C-RING, 3 WIDE H-RACKS

- CUSTOMIZABLE 5' TALL 3-TIER SPINNER RACK CAN HAVE ANY COMBINATIONS OF HAT H-RACKS AND CIRCLE C-RINGS
- WIDE H-RACK SPECIALLY DESIGNED TO HOLD CHOP TOP®, SCALESKINZ® & SKULSKINZ®
- HEADWEAR NOT INCLUDED

\*HEADERS NOT INCLUDED ON DISPLAYS



**CAPSMITH, INC.**  
HEADWEAR DISTRIBUTION

DESIGNS MAY VARY FROM PICTURES SHOWN. ALL LOGOS AND TRADEMARKS ARE THE PROPERTY OF THEIR RESPECTIVE OWNERS © CAPSMITH, INC. 2023. REEL ANGLER® FLORIDAFLAGS™ COPYRIGHT 2020. HUNTING CAMP CAMO® COPYRIGHT 2019, CAPSMITH, INC. ALL RIGHTS RESERVED

ALL ORIGINAL ARTWORK IS THE COPYRIGHTED WORK OF CAPSMITH, INC. AND IS PROTECTED UNDER THE COPYRIGHT ACT OF 1976, 17 U.S.C. 101 ET. SEQ. ALL RIGHTS RESERVED. ANY UNAUTHORIZED USE OR REPRODUCTION, INCLUDING DERIVATIVE WORKS, WILL BE PROSECUTED TO THE FULLEST EXTENT ALLOWED BY LAW. ACTUAL PRODUCTS MAY VARY FROM PICTURES SHOWN. CAPSMITH, INC. IS NOT RESPONSIBLE FOR TYPOGRAPHICAL ERRORS.

**1-800-228-3889**

[SALES@CAPSMITH.COM](mailto:SALES@CAPSMITH.COM) | [WWW.CAPSMITH.COM](http://WWW.CAPSMITH.COM)

2240 OLD LAKE MARY RD. SANFORD, FL 32771