

**EDGE**

**CAR AUDIO 2019**



# EDGE

## *REVOLUTIONARY CAR AUDIO*

ALL MEN MAY BE CREATED EQUAL, BUT ALL CAR AUDIO IS NOT.

THE HISTORY OF CAR AUDIO DESIGN IS THE SEARCH FOR EXTENDED BASS FREQUENCIES, HEART STOPPING MIDS AND EAR SPLITTING TREBLE. BUT WHAT IS PERFORMANCE WITHOUT QUALITY? TO COMBINE THE TWO IS THE DREAM OF EDGE CAR AUDIO.

WE BRING FORTH INDUSTRY LEADING PRO AUDIO SPEAKERS WITH EXTREME ESQ1 CHARACTERISTICS CAPABLE OF PROVIDING LOUD, CLEAR AND DYNAMIC SOUND!

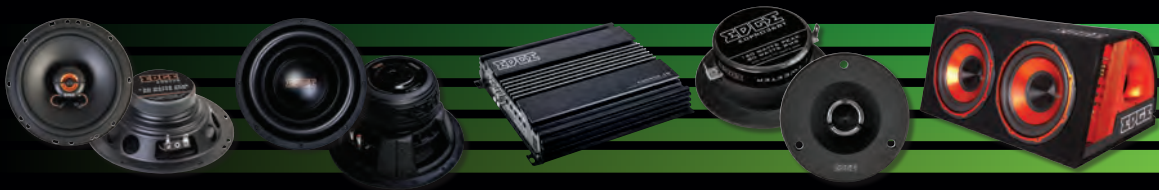
OUR TEAM OF ENGINEERS HAVE RESEARCHED AND CONSTRUCTED AN EXTENDED RANGE OF HIGH PERFORMANCE SUBWOOFERS THAT PLUNGE TO THE LOWEST DEPTHS IMAGINABLE!

IN CAR MUSIC SHOULD BE FOR THE ENJOYMENT OF THE MANY, NOT JUST THE FEW!

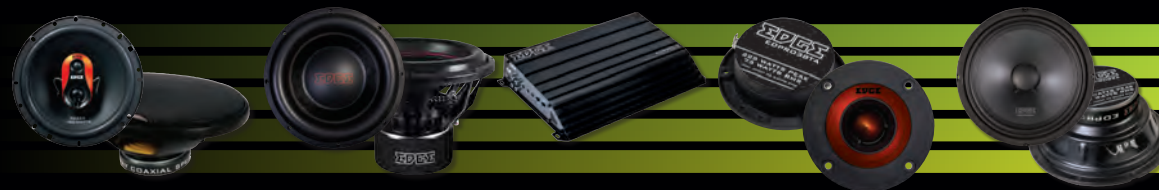
THE EDGE COAXIAL AND COMPONENT SPEAKER RANGE DELIVERS VOLUME AND CLARITY FOR EVERYDAY USE. OUR EXTENSIVE ARRAY OF AMPLIFIERS ARE WITHIN THE REACH OF ALL BUDGETS, FROM ENTRY LEVEL INSTALLATIONS TO THE LATEST COMPETITION AMPLIFIERS.

CAR AUDIO IS FOR ALL PEOPLE. JOIN THE REVOLUTION!

**DB**  
SERIES  
**LEVEL 1**



**DBX**  
SERIES  
**LEVEL 2**



**STREET**  
SERIES  
**LEVEL 3**



**XTREME**  
SERIES  
**LEVEL 4**



**UNLIMITED**  
SERIES  
**LEVEL 5**





# EDGE

# DB SERIES

THE EDGE DB SERIES WAS DESIGNED TO OFFER THE BEST  
BANG FOR BUCK PRODUCTS ON THE MARKET.

WITH SUBWOOFERS, COAXIAL SPEAKERS, PRO AUDIO SPEAKERS  
AND AMPLIFIERS THE DB SERIES PROVIDES EVERYTHING YOU  
NEED TO BE THE LOUDEST ON THE STREETS.

## DB COAXIAL SPEAKER RANGE



- 2 Way Coaxial Speaker Configuration
- PEI tweeter Element
- IMPP Woofer Cone
- Multifit design allows fitment in 99% of Vehicles

## DB AMPLIFIER



- Power Amplifiers
- Onboard Active Crossovers
- High Level Input with Auto Turn On Function
- Variable Bass Boost Circuit
- Anodised Extruded Aluminium Heatsink

### SPECIFICATION

Model	ED522B-E7	ED622B-E7
Type	Coaxial	Coaxial
Configuration	2-way	2-way
Speaker Size	5.25" (130mm)	6.5" (165mm)
RMS Power	50 watts	60 watts
Peak Power	100 watts	120 watts
Frequency Response	80Hz - 20kHz	65Hz - 20kHz
Impedance	4Ω	4Ω
Mounting Depth	2" (50mm)	2.1" (53mm)
Mounting Diameter	4.6" (117mm)	5.6" (141mm)
Recommended Amplifier	EDA100.4-E7	EDA100.4-E7

### SPECIFICATION

Model	EDB500.1-E9
Configuration	Monoblock
Dimensions (H x W x D)	58mm (2.3") x 228mm (9") x 224mm (8.8")
RMS @ 4Ω Mono	1 x 150w
RMS @ 2Ω Mono	1 x 350w
RMS @ 1Ω Mono	1 x 500w
Maximum Power	1000w
Frequency Response	10Hz - 500Hz
Crossover Type	LP / Subsonic
Crossover Range	10Hz - 150Hz
Recommended Fuse	40A
Topology	Class D

# DB PRO AUDIO TWEETER

# DB PRO AUDIO MIDRANGE SPEAKER RANGE



- ▶ 3.7" (95mm) pro audio bullet tweeter
- ▶ Aluminium diaphragm
- ▶ RMS power 80 watts
- ▶ Peak power 160 watts
- ▶ Mounting depth 39mm
- ▶ Sensitivity 105dB
- ▶ Frequency response 2kHz - 20kHz



- ▶ Non Pressed Paper Cone
- ▶ Dual Roll Foam Surround
- ▶ PC Spiders
- ▶ Spade Connectors
- ▶ 4 Ohm Impedance

## SPECIFICATION

Model	EDPRO36BT-E7
Type	Pro audio Tweeter
Configuration	1-way
Speaker Size	3.7" (95mm)
RMS Power	80 watts
Peak Power	160 watts
Frequency Response	2kHz - 20kHz
Sensitivity	105dB
Impedance	4Ω
Mounting Depth	1.5" (39mm)
Mounting Diameter	4.6" (117mm)
Recommended Amplifier	EDA100.4-E7

## SPECIFICATION

Model	EDPRO6B-E6	EDPRO65B-E6	EDPRO8B-E7	EDPRO10B-E7
Type	Pro Audio Midrange	Pro Audio Midrange	Pro Audio Midrange	Pro Audio Midrange
Configuration	1-way	1-way	1-way	1-way
Speaker Size	6.5" (165mm)	6.5" (165mm)	8" (200mm)	10" (257mm)
RMS Power	150 watts	150 watts	175 watts	200 watts
Peak Power	300 watts	300 watts	350 watts	400 watts
Sensitivity	92dB	92dB	92dB	91dB
Frequency Response	150Hz - 10kHz	150Hz - 10kHz	150Hz - 10kHz	65Hz - 10kHz
Impedance	4Ω	4Ω	4Ω	4Ω
Mounting Depth	3" (75mm)	3" (75mm)	3.3" (85mm)	4.1" (103mm)
Mounting Diameter	5.7" (145mm)	5.7" (145mm)	7.3" (186mm)	9.3" (237mm)
Recommended Amplifier	EDA350.2-E7	EDA350.2-E7	EDA350.2-E7	EDA350.2-E7

# DB SUBWOOFER RANGE

# DB BASS ENCLOSURE RANGE



- ▶ Non Pressed Paper Cone
- ▶ Wide Roll Stitched Dual Foam Surround
- ▶ Dual Black PC Spiders
- ▶ Spring Loaded Connectors
- ▶ High Quality Y35 Ferrite Magnets
- ▶ Dual 2 Ohm Impedance



- ▶ Perfectly Matched Active Amplifiers
- ▶ High and Low Level input
- ▶ Up To 1800 Watts Peak Power
- ▶ Up to 600 Watts RMS Power
- ▶ Built In Cable Management Solution
- ▶ Flared Port Reduces Turbulance

## SPECIFICATION

Model	EDB12BR-E9	EDB12D2-E7
Cone	Non-pressed paper cone	Non-pressed paper cone
Surround	Big roll foam - stitched	Big roll foam - stitched
Dustcap	Black PP	Black PP
Voice Coil	25mm Copper winding	36mm Copper winding
Spider	1pcs black PC	2pcs black PC
Gasket	Rubber	Rubber
Top Plate	8mm Black anodized	10mm Black anodized
T-Yoke	8mm Bumped	10mm Flat
Terminal / Wire	Terminal	Terminal
Impedance	Dual 2Ω	Dual 2Ω
RMS Power	400 watts	700 watts
Magnet	156mm x 80mm x 25mm 2pcs	156mm x 80mm x 25mm 2pcs

## SPECIFICATION

Model	EDB10A-E2	EDB12A-E2	EDB12TA-E2
Driver	ED510A	ED512A	ED512A x 2
Power (watts)	250W RMS / 750W Peak	300W RMS / 900W Peak	600W RMS / 1800W Peak
Impedance	4Ω	4Ω	4Ω
Dimensions (H x W x D)	300mm (11.8") x 365mm (14.4") x 400mm (15.7")	338mm (13.3") x 408mm (16.1") x 413mm (16.3")	338mm (13.3") x 740mm (29.1") x 413mm (16.3")
Configuration	4th order bass reflex	4th order bass reflex	4th order bass reflex
Amplifier	ED7200 (Active)	ED7200 (Active)	ED7300 (Active)



# EDGE

# DBX

SERIES

WHEN THE DB SERIES FROM EDGE JUST DOESN'T FEED YOUR NEED FOR EXTREME AUDIO, THE DBX SERIES PUSHES THE BOUNDARIES OF THE BEST VALUE RANGE ON THE MARKET!

THE DBX SERIES OFFERS AN EXTREME TAKE ON OUR DB SERIES, THIS IS HIGH POWERED SUBWOOFERS, SUPER LOUD PRO AUDIO SPEAKERS, TWEETERS AND A BRILLIANT RANGE OF AMPLIFIERS TO POWER THEM ALL.

WHEN YOU WANT TO PUSH YOUR BUDGET GO DBX.



# DBX COAXIAL SPEAKER RANGE

# DBX AMPLIFIER RANGE



- 3 Way Coaxial Speaker Configuration
- PEI tweeter Element
- Composite Woofer Cone
- Multifit design allows fitment in 99% of Vehicles

- Power Amplifiers
- Onboard Active Crossovers
- High Level Input with Auto Turn On Function
- Variable Bass Boost Circuit
- Anodised Extruded Aluminium Heatsink

## SPECIFICATION

Model	ED225-E8	ED226-E8	ED229-E8
Type	Coaxial	Coaxial	Coaxial
Configuration	3-way	3-way	3-way
Speaker Size	5.25" (130mm)	6.5" (165mm)	6x9" (150 x 220mm)
RMS Power	75 watts	90 watts	150 watts
Peak Power	150 watts	180 watts	300 watts
Frequency Response	80Hz - 20kHz	65Hz - 20kHz	45Hz - 20kHz
Impedance	4Ω	4Ω	4Ω
Mounting Depth	2" (50mm)	2.1" (53mm)	3.1" (79mm)
Mounting Diameter	4.6" (117mm)	5.6" (141mm)	5.7" (145mm) x 8.5" (215mm)
Recommended Amplifier	EDA100.4-E7	EDA100.4-E7	EDA100.4-E7

## SPECIFICATION

Model	EDA100.4-E7	EDA150.4-E7	EDA200.4-E7	EDA350.2-E7	EDA1200.1-E8	EDA1500.1-E8	EDA1800.1-E8
Configuration	4 channel	4 channel	4 channel	2 channel	Monoblock	Monoblock	Monoblock
Dimensions (H x W x D)	58mm (2.3") x 280mm (11") x 224mm (8.8")	58mm (2.3") x 310mm (12.2") x 330mm (8.8")	58mm (2.3") x 350mm (13.8") x 224mm (8.8")	58mm (2.3") x 350mm (13.8") x 224mm (8.8")	58mm (2.3") x 280mm (11") x 224mm (8.8")	58mm (2.3") x 338mm (13.3") x 224mm (8.8")	58mm (2.3") x 378mm (14.9") x 224mm (8.8")
RMS @ 4Ω Stereo	4 x 80 watts	4 x 100 watts	4 x 150 watts	2 x 250 watts	N/A	N/A	N/A
RMS @ 2Ω Stereo	4 x 100 watts	4 x 150 watts	4 x 200 watts	2 x 350 watts	N/A	N/A	N/A
RMS @ 4Ω Mono	2 x 200 watts	2 x 300 watts	2 x 400 watts	1 x 700 watts	1 x 400 watts	1 x 500 watts	1 x 600 watts
RMS @ 2Ω Mono	N/A	N/A	N/A	N/A	1 x 800 watts	1 x 1000 watts	1 x 1200 watts
RMS @ 1Ω Mono	N/A	N/A	N/A	N/A	1 x 1200 watts	1 x 1500 watts	1 x 1800 watts
Maximum Power	800 watts	1200 watts	1600 watts	1400 watts	2400 watts	3000 watts	3600 watts
Frequency Response	20Hz - 20kHz	20Hz - 20kHz	20Hz - 20kHz	20Hz - 20kHz	10Hz - 500Hz	10Hz - 500Hz	10Hz - 500Hz
Crossover Type	LP / HP / Flat	LP / HP / Flat	LP / HP / Flat	LP / HP / Flat	LP / Subsonic	LP / Subsonic	LP / Subsonic
Crossover Range	30Hz - 250Hz	30Hz - 250Hz	30Hz - 250Hz	30Hz - 250Hz	10Hz - 150Hz	10Hz - 150Hz	10Hz - 150Hz
Recommended Fuse	2 x 20A	2 x 25A	2 x 35A	2 x 30A	3 x 40A	150A (External fuse)	200A (External fuse)
Topology	Class AB	Class AB	Class AB	Class AB	Class D	Class D	Class D

# DBX PRO AUDIO TWEETER RANGE

# DBX PRO AUDIO MIDRANGE SPEAKER RANGE



- ▶ Pro Audio Bullet Tweeter
- ▶ Titanium Diaphragm
- ▶ Aluminium Front Housing
- ▶ 25mm Voice Coil

## SPECIFICATION

Model	EDPRO37TA-E4	EDPRO38TA-E4
Type	Pro audio Tweeter	Pro audio Tweeter
Configuration	1-way	1-way
Speaker Size	3.8" (98mm)	3.8" (98mm)
RMS Power	75 watts	75 watts
Peak Power	225 watts	225 watts
Frequency Response	2kHz - 20kHz	2kHz - 20kHz
Sensitivity	102dB	100dB
Impedance	4Ω	4Ω
Mounting Depth	1.1" (28mm)	1.5" (39mm)
Mounting Diameter	2.85" (73mm)	2.81" (72mm)
Recommended Amplifier	EDA100.4-E7	EDA100.4-E7



- ▶ Composite Woofer Cone
- ▶ Dual Roll Cloth Surround
- ▶ PC Spiders
- ▶ Push Connectors
- ▶ 25mm Aluminium Voice Coil
- ▶ 4 Ohm Impedance

**NEW  
FOR  
2019**

## SPECIFICATION

Model	EDBPRO65RX-E9	EDPRO65SX-E6	EDPRO8SX-E6
Type	Pro Audio Midrange	Pro Audio Midrange	Pro Audio Midrange
Configuration	1-way	1-way	1-way
Speaker Size	6.5" (165mm)	6.5" (165mm)	8" (200mm)
RMS Power	130 watts	100 watts	150 watts
Peak Power	260 watts	260 watts	300 watts
Sensitivity	93dB	93dB	95dB
Frequency Response	160Hz - 10kHz	160Hz - 10kHz	125Hz - 10kHz
Impedance	4Ω	4Ω	4Ω
Mounting Depth	3.1" (78mm)	3.1" (78mm)	3.6" (91mm)
Mounting Diameter	5.7" (145mm)	5.7" (145mm)	7.4" (187mm)
Recommended Amplifier	EDA350.2-E7	EDA350.2-E7	EDA350.2-E7

# DBX SUBWOOFER RANGE

# DBX BASS ENCLOSURE



- ▶ Non Pressed Paper Cone
- ▶ Wide Roll Stitched Dual Foam Surround
- ▶ Dual Black PC Spiders
- ▶ Spring Loaded Connectors
- ▶ Dual Stacked High Quality Y35 Ferrite Magnets
- ▶ 64mm 4 Layer Black Aluminium Voice Coil
- ▶ Dual 2 Ohm Impedance



- ▶ Perfectly Matched Active Amplifier
- ▶ High and Low Level input
- ▶ Auto Turn On When Using High Level Input
- ▶ 240 Watts Peak Power
- ▶ Super Shallow Profile
- ▶ Remote Level Control

## SPECIFICATION

	Model	EDB12D2X-E7	EDB15D2X-E7
	Cone	Non-pressed paper cone	Non-pressed paper cone
	Surround	Big roll foam - stitched	Big roll foam - stitched
	Dustcap	Black PP	Black PP
	Voice Coil	45mm Copper winding	45mm Copper winding
	Spider	2pcs black PC	2pcs black PC
	Gasket	Rubber	Rubber
	Top Plate	10mm Black anodized	10mm Black anodized
	T-Yoke	8mm Bumped	12mm Bumped
	Terminal / Wire	Terminal	Terminal
	Impedance	Dual 2Ω	Dual 2Ω
	RMS Power	900 watts	1100 watts
	Magnet	170mm x 90mm x 20mm 2pcs	190mm x 90mm x 20mm 2pcs

## SPECIFICATION

	Model	EDC8A-E8
	Driver	EDC8
	Power (watts)	80W RMS / 240W Peak
	Impedance	4Ω
	Configuration	2nd order Acoustic Suspension
	Product dimensions (H x W x D)	66mm (2.6") x 235mm (9.3") x 330mm (13")
	Amplifier	ED7200 (active)



# EDGE

# STREET

## SERIES

THE STREET SERIES IS WHERE IT ALL BEGAN!  
IN 2007 WE BEGAN SETTING THE STREETS ON FIRE WITH OUT  
EDGE BRAND AND THE CURRENT INCARNATION OF THE STREET  
SERIES IS STRONGER THAN EVER.

THE STREET SERIES IS THE MOST COMPREHENSIVE OF OUR  
RANGES, THERE ARE PRODUCTS HERE TO SUIT EVERYONE!  
IN THIS RANGE WE START TO PUSH THE BOUNDARIES OF CAR  
AUDIO WITH HIGH LEVELS OF PRO AUDIO, TRUNK RATTLING  
SUBWOOFER ALONGSIDE COMPONENT AND COAXIAL SPEAKERS  
TO SUIT ALL NEEDS.

EDGE, SETTING THE STREETS ON FIRE!

# STREET SHALLOW SPEAKER RANGE



- ▶ 2 Way Coaxial Speakers and 2 way component speakers
- ▶ IMPP Woofer Cone
- ▶ Shallow basket profile increases ease of installation
- ▶ Multifit design allows fitment in 99% of Vehicles

# STREET SPEAKER RANGE



- ▶ 2 Way Coaxial Speakers and 2 way component speakers
- ▶ IMPP Woofer Cone
- ▶ Deeper basket profile delivers improved bass response
- ▶ Multifit design allows fitment in 99% of Vehicles

## SPECIFICATION

Model	EDST214-E6	EDST215-E6	EDST216-E6	EDST219-E6	EDST215C-E6	EDST216C-E6
Type	Coaxial	Coaxial	Coaxial	Coaxial	Component	Component
Configuration	2-Way	2-Way	2-Way	3-Way	2-Way	2-Way
Speaker Size	4" (100mm)	5.25" (130mm)	6.5" (165mm)	6x9" (150 x 220mm)	5.25" (130mm)	6.5" (165mm)
RMS Power	40 watts	50 watts	60 watts	100 watts	60 watts	70 watts
Peak Power	80 watts	100 watts	120 watts	200 watts	120 watts	140 watts
Frequency Response	100Hz - 20kHz	80Hz - 20kHz	65Hz - 20kHz	45Hz - 20kHz	80Hz - 20kHz	65Hz - 20kHz
Impedance	4Ω	4Ω	4Ω	4Ω	4Ω	4Ω
Mounting Depth	1.6" (40mm)	1.6" (41mm)	2" (50mm)	3.1" (79mm)	1.6" (41mm)	2" (50mm)
Mounting Diameter	3.7" (93mm)	4.5" (116mm)	5.5" (140mm)	5.7" (145mm) x 8.5" (215mm)	4.5" (116mm)	5.5" (140mm)
Recommended Amplifier	EDA100.4-E7	EDA100.4-E7	EDA100.4-E7	EDA100.4-E7	EDA100.4-E7	EDA100.4-E7

## SPECIFICATION

Model	EDS225-E9	EDS226-E9	EDS229-E9	EDS225C-E9	EDS226C-E9
Type	Coaxial	Coaxial	Coaxial	Component	Component
Configuration	2-Way	2-Way	3-Way	2-Way	2-Way
Speaker Size	5.25" (130mm)	6.5" (165mm)	6x9" (150 x 220mm)	5.25" (130mm)	6.5" (165mm)
RMS Power	50 watts	60 watts	100 watts	60 watts	70 watts
Peak Power	100 watts	120 watts	200 watts	120 watts	140 watts
Frequency Response	80Hz - 20kHz	65Hz - 20kHz	45Hz - 20kHz	80Hz - 20kHz	65Hz - 20kHz
Impedance	4Ω	4Ω	4Ω	4Ω	4Ω
Mounting Depth	1.8" (46mm)	2.4" (61mm)	3.1" (79mm)	1.6" (41mm)	2" (50mm)
Mounting Diameter	4.5" (116mm)	5.5" (140mm)	5.7" (145mm) x 8.5" (215mm)	4.5" (116mm)	5.5" (140mm)
Recommended Amplifier	EDA100.4-E7	EDA100.4-E7	EDA100.4-E7	EDA100.4-E7	EDA100.4-E7

## STREET PRO AUDIO TWEETER RANGE

## STREET PRO AUDIO MIDRANGE SPEAKER RANGE



- ▶ Pro Audio Compression Driver
- ▶ Ferro-Fluid Voice Coil Cooling
- ▶ Aluminium Front Housing

### SPECIFICATION

Model	EDPRO35T-E4	EDPRO4TX-E4
Type	Pro audio Tweeter	Pro audio Tweeter
Configuration	1-way	1-way
Speaker Size	3.8" (98mm)	3.8" (98mm)
RMS Power	75 watts	75 watts
Peak Power	225 watts	225 watts
Frequency Response	2kHz - 20kHz	2kHz - 20kHz
Sensitivity	95dB	110dB
Impedance	4Ω	4Ω
Mounting Depth	2.1" (58mm)	2.4" (61mm)
Mounting Diameter	3.1" (80mm)	3.5" (71mm)
Recommended Amplifier	EDA100.4-E7	EDA100.4-E7



- ▶ Pro Audio Midrange
- ▶ Composite Woofer Cone
- ▶ Dual Roll Cloth Surround

### SPECIFICATION

Model	EDPROSC-E8	EDPRO65C-E8	EDPRO65X-E6	EDPRO65L-E6	EDPRO8X-E8
Type	Pro Audio Midrange	Pro Audio Midrange	Pro Audio Midrange	Pro Audio Midrange	Pro Audio Midrange
Configuration	1-way	1-way	1-way	1-way	1-way
Speaker Size	5.25" (130mm)	6.5" (165mm)	6.5" (165mm)	6.5" (165mm)	8" (200mm)
RMS Power	120 watts	130 watts	100 watts	150 watts	150 watts
Peak Power	240 watts	260 watts	260 watts	300 watts	300 watts
Sensitivity	89dB	92dB	93dB	95dB	90dB
Frequency Response	170Hz - 10kHz	160Hz - 10kHz	160Hz - 10kHz	125Hz - 10kHz	125Hz - 10kHz
Impedance	4Ω	4Ω	4Ω	4Ω	4Ω
Mounting Depth	2.3" (59mm)	3.1" (78mm)	3.1" (78mm)	3.1" (78mm)	3.6" (91mm)
Mounting Diameter	4.8" (121)	5.7" (145mm)	5.7" (145mm)	5.7" (145mm)	7.4" (187mm)
Recommended Amplifier	EDA350.2-E7	EDA350.2-E7	EDA350.2-E7	EDA350.2-E7	EDA350.2-E7

# STREET AMPLIFIER RANGE

# STREET SUBWOOFER RANGE

**NEW  
FOR  
2019**



- ▶ Power Amplifiers
- ▶ Onboard Active Crossovers
- ▶ High Level Input with Auto Turn On Function
- ▶ Variable Bass Boost Circuit
- ▶ Anodised Extruded Aluminium Heatsink

## SPECIFICATION

Model	EDS500.2-E9	EDS200.4-E9
Configuration	2 channel	4 channel
Dimensions (H x W x D)	52mm (2") x 350mm (13.8") x 183mm (7.2")	52mm (2") x 200mm (8") x 183mm (7.2")
RMS @ 4Ω Stereo	2 x 310 watts	4 x 120 watts
RMS @ 2Ω Stereo	2 x 500 watts	4 x 200 watts
RMS @ 1Ω Stereo	N/A	N/A
RMS @ 4Ω Mono	1x 1000 watts	2 x 400 watts
RMS @ 2Ω Mono	N/A	N/A
Maximum Power	2000 watts	1600 watts
Frequency Response	20Hz - 20kHz	20Hz - 20kHz
Crossover Type	LP / HP / Subsonic / Flat	LP / HP / Flat
Crossover Range	10Hz - 11kHz	10Hz - 11kHz
Recommended Fuse	2 x 40A ATC	2 x 40A ATC
Topology	Class D	Class D

**NEW  
FOR  
2019**



- ▶ Non Pressed Paper Cone
- ▶ Wide Roll Stitched Dual Foam Surround
- ▶ Dual, Triple And Quad Black PC Spiders
- ▶ Spring Loaded Connectors
- ▶ High Quality Y35 Triple stacked Ferrite Magnets
- ▶ 76mm 4 Layer Black Aluminium Voice Coil (64mm EDS10D2-E7)
- ▶ Dual 2 Ohm Impedance

## SPECIFICATION

Model	EDS8D2-E9	EDS10D2-E7	EDP122SPL-E6	EDS12D1-E7 / EDS12D2-E7	EDS15D1-E7 / EDS15D2-E7	EDS18D1-E7 / EDS18D2-E7
Cone	Non-pressed paper cone	Non-pressed paper cone	Non-pressed paper cone	Non-pressed paper cone	Non-pressed paper cone	Non-pressed paper cone
Surround	Big roll foam - stitched	Big roll foam - stitched	Big roll foam - stitched	Big roll foam - stitched	Big roll foam - stitched	Big roll foam - stitched
Dustcap	Black PP	Black PP	Black PP	Black PP	Black PP	Black PP
Voice Coil	35mm Copper winding	40mm Copper winding	45mm Copper winding	50mm Copper winding	55mm Copper winding	65mm Copper winding
Spider	2pcs black PC	2pcs black PC	2pcs PC	3pcs black PC	4pcs black PC	4pcs black PC
Gasket	Rubber	Rubber	Rubber	Rubber	Rubber	Rubber
Top Plate	10mm Black anodized	8mm Black anodized	13mm Black anodized	15mm Black anodized	15mm Black anodized	15mm Black anodized
T-Yoke	15mm Flat	10mm Flat	10mm Flat	15mm Flat	25mm Flat	25mm Flat
Terminal / Wire	Terminal	Terminal	10 AWG Wire	Terminal	Terminal	Terminal
Impedance	Dual 2Ω	Dual 2Ω	Dual 2Ω	Dual 1Ω / Dual 2Ω	Dual 1Ω / Dual 2Ω	Dual 1Ω / Dual 2Ω
RMS Power	800 watts	1300 watts	1500 watts	1500 watts	1800 watts	2000 watts
Magnet	156mm x 80mm x 20mm 2pcs	190mm x 95mm x 20mm 3pcs	180mm x 90mm x 20mm 2pcs	190mm x 95mm x 20mm 3pcs	190mm x 95mm x 20mm 3pcs	200mm x 110mm x 20mm 3pcs



**EDGE**

# **XTREME**

**SERIES**

WANT TO BE THE LOUDEST ON THE STREET?  
WANT TO PUSH THE LIMITS?  
THEN THE EDGE XTREME RANGE IS THE BEST PLACE FOR YOU  
TO START LOOKING.

THE XTREME SERIES COMBINES SOME OF THE MOST POWERFUL  
SUBWOOFERS, AMPLIFIERS AND SPEAKERS INTO ONE RANGE!  
WITH BRAND NEW SUBWOOFERS AND AMPLIFIERS WE'RE TRULY  
LIVING UP TO OUR PREMISE OF PRODUCING REVOLUTIONARY  
CAR AUDIO.

WANT TO BE SEEN AND HEARD? CHOOSE EDGE EXTREME!





# XTREME WIDEBAND AMPLIFIER RANGE



- ▶ Ultra Class D Delivers Incredible Efficiency Of Up To 92%
- ▶ Wide Frequency Response Allows Use With Not Only Subwoofers But Also Full Range Speaker Systems.
- ▶ Full EMI And CE Approval

## SPECIFICATION



Model	EDSH4000.1D-E6	EDSH7000.1D-E6	EDSH10000.1D-E6	EDX1250.2-E9	EDX600.4-E9
Configuration	Competition Monoblock	Competition Monoblock	Competition Monoblock	2 channel	4 channel
Dimensions (H x W x D)	2.7" x 12.6" x 8.9" (68mm x 320mm x 225mm)	2.7" x 16.1" x 8.9" (68mm x 410mm x 225mm)	2.7" x 21.3" x 8.9" (68mm x 540mm x 225mm)	2.1" x 15.7" x 7.2" (53mm x 400mm x 183mm)	2.1" x 15.7" x 7.2" (53mm x 398mm x 183mm)
RMS @ 4Ω (14.4v 1% THD)	1650 watts	3000 watts	3470 watts	2 x 500 watts	4 x 220 watts
RMS @ 2Ω (14.4v 1% THD)	2800 watts	4900 watts	7200 watts	2 x 850 watts	4 x 380 watts
RMS @ 1Ω (14.4v 1% THD)	4000 watts	7000 watts	10,500 watts	2 x 1250 watts	4 x 600 watts
RMS @ 4Ω bridged (14.4v 1% THD)	N/A	N/A	N/A	1 x 1700 watts	2 x 760 watts
RMS @ 2Ω bridged (14.4v 1% THD)	N/A	N/A	N/A	1 x 2500 watts	2 x 1200 watts
Maximum Power	8000 watts	14,000 watts	21,000 watts	5000 watts	4800 watts
Frequency Response	5Hz - 20kHz	5Hz - 20kHz	5Hz - 20kHz	20Hz - 20kHz	20Hz - 20kHz
Crossover Type	LP / HP	LP / HP	LP / HP	LP / HP / Subsonic	LP / HP / Flat
Crossover Range	10Hz - 15kHz	10Hz - 15kHz	10Hz - 15kHz	10Hz - 20kHz	50Hz - 11kHz
Efficiency	92%	92%	92%	92%	92%
Operating Voltage	9v DC - 15v DC	9v DC - 15v DC	9v DC - 15v DC	9v DC - 15v DC	9v DC - 15v DC
Recommended Fuse Rating	300A	600A	1000A	180A	180A
Topology	Ultra Class D	Ultra Class D	Ultra Class D	Class D	Class D

# XTREME BASS AMPLIFIER RANGE



- ▶ Ultra Class D Delivers Incredible Efficiency Of Up To 92%
- ▶ 0 Avg Inputs Allow For Maximum Current Transfer To The Amplifier
- ▶ Amplifier Strapping Allows Two Identical Amplifiers To Deliver Their Combined Output Into A Single Channel
- ▶ Full EMI And CE Approval

## SPECIFICATION

Model	EDX5500.1D-E8	EDX7000.1D-E8	EDX8000.1D-E8
Configuration	Competition Monoblock	Competition Monoblock	Competition Monoblock
Dimensions (H x W x D)	2.7" x 12.6" x 8.9" (68mm x 320mm x 225mm)	2.7" x 16.1" x 8.9" (68mm x 410mm x 225mm)	2.7" x 12.6" x 8.9" (68mm x 320mm x 225mm)
RMS @ 4Ω (14.4v 1% THD)	1250 watts	1650 watts	2200 watts
RMS @ 2Ω (14.4v 1% THD)	2500 watts	3500 watts	4500 watts
RMS @ 1Ω (14.4v 1% THD)	5000 watts	6500 watts	7500 watts
RMS @ 1Ω (16v 1% THD)	5500 watts	7000 watts	8000 watts
Maximum Power	11,000 watts	14,000 watts	16,000 watts
Frequency Response	5Hz - 500Hz	5Hz - 500Hz	5Hz - 500Hz
Crossover Type	LP / Subsonic	LP / Subsonic	LP / Subsonic
Crossover Range	10Hz - 500Hz	10Hz - 500Hz	10Hz - 500Hz
Input Sensitivity	200mv - 8V	200mv - 8V	200mv - 8V
Efficiency	92%	92%	92%
Operating Voltage	9v DC - 19v DC	9v DC - 19v DC	9v DC - 19v DC
Recommended Fuse Rating	300A	600A	800A
Topology	Ultra Class D	Ultra Class D	Ultra Class D

# XTREME SUBWOOFER RANGE



- ▶ Non Pressed Paper Cone
- ▶ Wide Roll Dual Foam Surround
- ▶ 10" Quad Black NOMEX Spiders
- ▶ 8 awg direct cable connection
- ▶ High Quality Y35 Triple stacked Ferrite Magnets
- ▶ 76mm USA Built 4 Layer Flat Wound Voice Coil
- ▶ Dual 1 Ohm Impedance

# XTREME PRO AUDIO WOOFER RANGE



- ▶ 12" (323mm) Pro Audio Subwoofer
- ▶ Composite Woofer Cone
- ▶ Triple Roll Cloth Surround
- ▶ Rms Power 1000 Watts
- ▶ Peak Power 2000 Watts
- ▶ 4" (100mm) Voice Coil
- ▶ Frequency response 50Hz - 500Hz

## SPECIFICATION

	Model	EDX12D1-E7 / EDX12D2-E7	EDP152SPL-E6	EDX15D1-E7	EDX18D1-E7
	Cone	Non-pressed paper cone	Non-pressed paper cone	Non-pressed paper cone	Non-pressed paper cone
	Surround	Big roll foam - stitched	Big roll foam - stitched	Big roll foam - stitched	Big roll foam - stitched
	Dustcap	Black PP	Black PP	Black PP	Black PP
	Voice Coil	55mm Copper winding	70mm Copper winding	68mm Copper winding	70mm Copper winding
	Spider	3pcs PC	4pcs black NOMEX	5pcs PC	4pcs black NOMEX + 2pcs PC
	Gasket	Rubber	Rubber	Rubber	Rubber
	Top Plate	20mm Black anodized	25mm Black anodized	25mm Black anodized	25mm Black anodized
	T-Yoke	28mm Flat	30mm Flat	25mm Flat	30mm Flat
	Terminal / Wire	10 AWG Wire	8 awg Cable	10 AWG Wire	8 awg Cable
	Impedance	Dual 2Ω	Dual 1Ω / Dual 2Ω	Dual 2Ω	Dual 1Ω
	RMS Power	2500 watts	3000 watts	4000 watts	3000 watts
	Magnet	210mm x 90mm x 25mm 2pcs	220mm x 110mm x 25mm 3pcs	250mm x 140mm x 20mm 3pcs	220mm x 110mm x 25mm 3pcs

## SPECIFICATION

	Model	EDPRO12PW-E7
	Type	Pro Audio Woofer
	Configuration	1-way
	Speaker Size	12" (323mm)
	RMS Power	1000 watts
	Peak Power	2000 watts
	Sensitivity	95dB
	Frequency Response	125Hz - 10kHz
	Impedance	4Ω
	Mounting Depth	3.6" (91mm)
	Mounting Diameter	7.4" (187mm)
	Recommended Amplifier	EDA350.2-E7



# EDGE

# UNLIMITED

SERIES

WHEN ONLY THE BEST WILL DO EDGE UNLIMITED IS THE ONLY RANGE FOR YOU

WITH OUR MOST UNCOMPROMISED RANGE CONSISTING OF ALL THE LATEST TECHNOLOGY AND DESIGN WE ARE ABLE TO OFFER THE BIGGEST, STRONGEST, LOUDEST AND MOST POWERFUL PRODUCTS WE HAVE EVER PRODUCED.

MASSIVE 4 INCH VOICE COIL SPL SUBWOOFERS, 12,000 WATT AMPLIFIERS, NEODYMIUM SPEAKERS ALL SIT IN THIS SERIES OF REVOLUTIONARY CAR AUDIO.

THIS RANGE IS NOT FOR THE FAINT OF HEART AND IS USED IN COMPETITION WINNING INSTALLS AROUND THE WORLD! WHEN YOU WANT TO BE A WINNER CHOOSE EDGE UNLIMITED!

GROUND POUNDING, WINDOW SHAKING AUDIO AT ITS FINEST.

# UNLIMITED PRO AUDIO NEODYMIUM TWEETER



- 6.5" (165mm) Pro Audio Compression Driver
- Ferro-Fluid Voice Coil Cooling
- Neodymium magnet
- Rms Power 80 Watts
- Peak Power 240 Watts
- 35mm Voice Coil

NEODYMIUM MAGNETS ARE THE MOST POWERFUL OF THE RARE EARTH (RE) MAGNETS. SIZE FOR SIZE, THERE IS NO BETTER MAXIMUM PERFORMANCE MAGNET.

NEODYMIUM MAGNETS ALLOW FOR DESIGNING IN THE HIGHEST MAGNETIC FIELDS IN THE AIR GAP FOR OUTSTANDING POWERFUL PERFORMANCE.

## SPECIFICATION

Model	EDPRO45TN-E6
Type	Compression driver
Configuration	1-way
Speaker Size	6.5" (165mm)
RMS Power	80 watts
Peak Power	240 watts
Frequency Response	1.2kHz - 20kHz
Sensitivity	105dB
Impedance	6.6Ω
Mounting Depth	3.7" (95mm)
Mounting Diameter	5.3" (135mm)
Recommended Amplifier	EDA350.2-E7

# UNLIMITED CLASS AB SQ AMPLIFIER RANGE



- ▶ Class AB Delivers Best Possible Sound Quality
- ▶ 1 Ohm Stereo Operation For Low Impedance Loads
- ▶ High Pass, Low Pass And Bandpass Active Crossover
- ▶ Wideband 10Hz - 5kHz Crossover
- ▶ Full EMI And CE Approval

## SPECIFICATION

Model	EDA4500.2AB-E6	EDA2000.4AB-E6
Configuration	Competition 2CH Amplifier	Competition 4CH Amplifier
Dimensions (H x W x D)	2.3" x 33.9" x 9.9" (58mm x 860mm x 251mm)	2.3" x 26" x 9.9" (58mm x 660mm x 251mm)
RMS @ 4Ω Stereo (14.4v 1% THD)	2 x 850 watts	4 x 210 watts
RMS @ 2Ω Stereo (14.4v 1% THD)	2 x 1450 watts	4 x 350 watts
RMS @ 1Ω Stereo (14.4v 1% THD)	2 x 2250 watts	4 x 500 watts
RMS @ 4Ω Mono (14.4v 1% THD)	1 x 2900 watts	2 x 700 watts
RMS @ 2Ω Mono (14.4v 1% THD)	1 x 4500 watts	2 x 1000 watts
Maximum Power	9000 watts	4000 watts
Frequency Response	5Hz - 20kHz	5Hz - 20kHz
Crossover Type	LP / HP / BP	LP / HP / BP
Crossover Range	10Hz - 5kHz	10Hz - 5kHz
Input Sensitivity	200mv - 8V	200mv - 8V
Operating Voltage	10v DC - 16v DC	10v DC - 16v DC
Recommended Fuse Rating	400A	200A
Topology	Class AB	Class AB

# UNLIMITED CLASS D BASS AMPLIFIER RANGE



- ▶ Ultra Class D Delivers Incredible Efficiency Of Up To 92%
- ▶ 0 Avg Inputs Allow For Maximum Current Transfer To The Amplifier
- ▶ Amplifier Strapping Allows Two Identical Amplifiers To Deliver Their Combined Output Into A Single Channel
- ▶ Full EMI And CE Approval

## SPECIFICATION

Model	EDA12000.1D-E6
Configuration	Competition Monoblock
Dimensions (H x W x D)	3" x 37.4" x 11.8" (76mm x 950mm x 299mm)
RMS @ 4Ω (14.4v 1% THD)	2650 watts
RMS @ 2Ω (14.4v 1% THD)	5200 watts
RMS @ 1Ω (14.4v 1% THD)	11,000 watts
RMS @ 1Ω (16v 1% THD)	12,000 watts
Maximum Power	24,000 watts
Frequency Response	10Hz - 350Hz
Crossover Type	LP / Subsonic
Crossover Range	10Hz - 250Hz
Input Sensitivity	200mv - 8V
Efficiency	92%
Operating Voltage	9v DC - 16v DC
Recommended Fuse Rating	900A
Topology	Ultra Class D

# UNLIMITED SUBWOOFER RANGE



- ▶ Non Pressed Paper Cone
- ▶ Wide Roll Dual Foam Surround
- ▶ 10" 6pcs Black NOMEX / PC Spiders
- ▶ 8 avg direct cable connection
- ▶ High Quality Y35 Triple stacked Ferrite Magnets
- ▶ 102mm USA Built 8 Layer Flat Wound Voice Coil
- ▶ Dual 1 Ohm Impedance

THE UNLIMITED SERIES SUBWOOFERS TAKE EVERYTHING FROM THE XTREME SERIES SUBWOOFERS AND TAKE IT TO AN EVEN CRAZIER LEVEL

- LARGEST MOTOR STRUCTURE IN THE INDUSTRY
- LONGEST VC WINDING HEIGHT POSSIBLE
- MASSIVE XMECH CAPACITY
- HUGE POWER HANDLING!
- UNIQUE MOTOR STRUCTURE DESIGN

## SPECIFICATION

	Model EDX12D1SPL-E7 / EDX12D2SPL-E7	EDX15D1SPL-E7	EDX18D1SPL-E7
Cone	Non-pressed paper cone	Non-pressed paper cone	Non-pressed paper cone
Surround	Big roll foam - stitched	Big roll foam - stitched	Big roll foam - stitched
Dustcap	Black PP	Black PP	Black PP
Voice Coil	75mm Copper winding	75mm Copper winding	75mm Copper winding
Spider	1pcs black NOMEX + 5pcs PC	1pcs black NOMEX + 5pcs PC	1pcs black NOMEX + 5pcs PC
Gasket	Rubber	Rubber	Rubber
Top Plate	30mm Black anodized	30mm Black anodized	30mm Black anodized
T-Yoke	50mm Flat	50mm Flat	50mm Flat
Terminal / Wire	8 awg Cable	8 awg Cable	8 awg Cable
Impedance	Dual 1Ω / Dual 2Ω	Dual 1Ω	Dual 1Ω
RMS Power	5000 watts	5000 watts	5000 watts
Magnet	250mm x 120mm x 25mm 3pcs	280mm x 120mm x 25mm 3pcs	280mm x 120mm x 25mm 3pcs

### DB SERIES

#### LEVEL 1

##### EDB12BR-E9

Fs	28Hz	BL	15.1Tm
Vas	62.9L	SPL	85.5dB
Re	4 Ohms	SD	0.047m/2
Qms	5.24	Cms	0.17mm/N
Qes	0.58	Mms	189.8g
Qts	0.52	Xmax	8.5mm

##### EDB12D2-E7

Fs	30Hz	BL	17.34Tm
Vas	39.47L	SPL	86.2dB
Re	3.8 Ohms	SD	0.047m/2
Qms	5.80	Cms	0.13mm/N
Qes	0.53	Mms	221.24g
Qts	0.48	Xmax	17.5mm

### DBX SERIES

#### LEVEL 2

##### EDB12D2X-E7

Fs	29.9Hz	BL	18.1Tm
Vas	37L	SPL	84.8dB
Re	3.9 Ohms	SD	0.047m/2
Qms	4.41	Cms	0.13mm/N
Qes	0.5	Mms	219.2g
Qts	0.45	Xmax	17.5mm

##### EDB15D2X-E7

Fs	25.5Hz	BL	22.2Tm
Vas	94L	SPL	87.5dB
Re	3.9 Ohms	SD	0.075m/2
Qms	4.27	Cms	0.12mm/N
Qes	0.43	Mms	329.8g
Qts	0.39	Xmax	17.5mm

### STREET SERIES

#### LEVEL 3

##### EDS8D2-E8

Fs	42.5Hz	BL	15.7Tm
Vas	4.1L	SPL	81.2dB
Re	2 Ohms	SD	0.023m/2
Qms	6.11	Cms	0.08mm/N
Qes	0.36	Mms	169g
Qts	0.34	Xmax	12.5mm

##### EDS10D2-E7

Fs	35.4Hz	BL	22.4Tm
Vas	15.3L	SPL	85dB
Re	3.9 Ohms	SD	0.033m/2
Qms	3.85	Cms	0.11mm/N
Qes	0.32	Mms	183.3g
Qts	0.3	Xmax	16mm

##### EDP122SPL-E6

Fs	37.5Hz	BL	21.98Tm
Vas	17.020mm <sup>2</sup>	SPL	83.7dB
Re	3.6 Ohms	SD	0.047m/2
Qms	6.667	Cms	53.928uM/N
Qes	0.59	Mms	334.435g
Qts	0.539	Xmax	29mm

##### EDS12D1-E7

Fs	35.4Hz	BL	22.3Tm
Vas	17.5L	SPL	86.7dB
Re	1.9 Ohms	SD	0.047m/2
Qms	3.87	Cms	0.06mm/N
Qes	0.3	Mms	320.3g
Qts	0.28	Xmax	17.5mm

##### EDS12D2-E7

Fs	38.9Hz	BL	22.3Tm
Vas	16.2L	SPL	86.3dB
Re	3.9 Ohms	SD	0.047m/2
Qms	3.64	Cms	0.05mm/N
Qes	0.34	Mms	321.3g
Qts	0.31	Xmax	17.5mm



# XTREME

SERIES

## LEVEL 4

### EDS15D1-E7

Fs	32.3Hz	BL	22.4Tm
Vas	50.8L	SPL	89.3dB
Re	1.9 Ohms	SD	0.075m/2
Qms	3.55	Cms	0.06mm/N
Qes	0.31	Mms	380.3g
Qts	0.28	Xmax	20mm

### EDS15D2-E7

Fs	34.6Hz	BL	30.6Tm
Vas	47.1L	SPL	89.3dB
Re	4 Ohms	SD	0.075m/2
Qms	3.58	Cms	0.06mm/N
Qes	0.36	Mms	381.4g
Qts	0.32	Xmax	20mm

### EDS18D1-E7

Fs	33.4Hz	BL	27.2Tm
Vas	94.7L	SPL	93.2dB
Re	2 Ohms	SD	0.116m/2
Qms	3.73	Cms	0.5mm/N
Qes	0.26	Mms	455.6g
Qts	0.24	Xmax	20mm

### EDS18D2-E7

Fs	33.7Hz	BL	33.5Tm
Vas	91.9L	SPL	91.9dB
Re	3.9 Ohms	SD	0.116m/2
Qms	4.34	Cms	0.5mm/N
Qes	0.35	Mms	460.6g
Qts	0.32	Xmax	23mm

### EDP122-E6

Fs	49.5Hz	BL	27.22Tm
Vas	9.739mm <sup>2</sup>	SPL	85.6dB
Re	3.6 Ohms	SD	0.047m/2
Qms	5.668	Cms	30.86µm/N
Qes	0.506	Mms	334.435g
Qts	0.464	Xmax	37.5mm

### EDP152SPL-E6

Fs	40.2Hz	BL	29.895Tm
Vas	24.728mm <sup>2</sup>	SPL	86.6dB
Re	4 Ohms	SD	0.075m/2
Qms	6.066	Cms	32.622µm/N
Qes	0.543	Mms	480.851g
Qts	0.499	Xmax	44.5mm

### EDX12D1-E7

Fs	32.6Hz	BL	18.1Tm
Vas	22.8L	SPL	85.4dB
Re	1.7 Ohms	SD	0.047m/2
Qms	4.31	Cms	0.07mm/N
Qes	0.35	Mms	325g
Qts	0.32	Xmax	22.5mm

### EDX15D1-E7

Fs	28.1Hz	BL	17.9Tm
Vas	66.3L	SPL	88dB
Re	1.7 Ohms	SD	0.075m/2
Qms	4.06	Cms	0.06mm/N
Qes	0.33	Mms	384.5g
Qts	0.33		

### EDX18D1-E7

Fs	27.1Hz	BL	20.17Tm
Vas	136L	SPL	91dB
Re	3.8 Ohms	SD	0.116m/2
Qms	3.8	Cms	0.719mm/N
Qes	0.34	Mms	477.9g
Qts	0.321	Xmax	20mm

# UNLIMITED

SERIES

## LEVEL 5

### EDX12D1SPL-E7

Fs	32.2Hz	BL	20.14Tm
Vas	22.09L	SPL	85.36dB
Re	1.8 Ohms	SD	0.047m/2
Qms	6.04	Cms	0.712mm/N
Qes	0.34	Mms	342.8g
Qts	0.323	Xmax	23mm

### EDX12D1.4SPL-E7

Fs	32.9Hz	BL	22.45Tm
Vas	21.09L	SPL	84.83dB
Re	2.8 Ohms	SD	0.047m/2
Qms	5.6	Cms	0.68mm/N
Qes	0.39	Mms	343.2g
Qts	0.368	Xmax	23mm

### EDX12D2SPL-E7

Fs	33.32Hz	BL	25.98Tm
Vas	20.76L	SPL	84.84dB
Re	3.8 Ohms	SD	0.047m/2
Qms	6.67	Cms	0.669mm/N
Qes	0.4	Mms	340.9g
Qts	0.378	Xmax	23mm

### EDX15D1SPL-E7

Fs	28.35Hz	BL	27.67Tm
Vas	43.33L	SPL	87.67dB
Re	1.8 Ohms	SD	0.075m/2
Qms	5.43	Cms	0.054mm/N
Qes	0.26	Mms	578.3g
Qts	0.256	Xmax	23mm

### EDX18D1SPL-E7

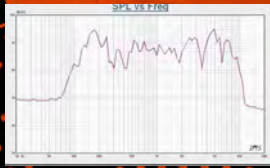
Fs	25.71Hz	BL	23.65Tm
Vas	122.7L	SPL	89.88dB
Re	1.8 Ohms	SD	0.116m/2
Qms	5.09	Cms	0.64mm/N
Qes	0.34	Mms	590.8g
Qts	0.319	Xmax	23mm

### DB SERIES

#### LEVEL 1

##### EDPRO6B-E6

Fs	166.199Hz	BL	4.41Tm
Vas	3.458L	SPL	93.4dB
Re	3.2 Ohms	SD	0.023m/2
Qms	8.695	Cms	112.067uM/N
Qes	1.406	Mms	8.183g
Qts	1.210		

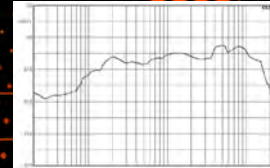


### DBX SERIES

#### LEVEL 2

##### EDBPRO65RX-E8

Fs	179.768Hz	BL	4.733Tm
Vas	2.52L	SPL	92.4dB
Re	3.2 Ohms	SD	0.014m/2
Qms	9.133	Cms	93.5uM/N
Qes	1.352	Mms	8.381g
Qts	1.178		



### STREET SERIES

#### LEVEL 3

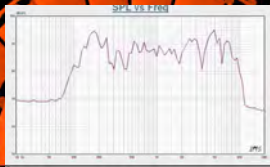
##### EDPRO5C-E8

Fs	171Hz	BL	4.6Tm
Vas	1.1L	SPL	89dB
Re	3 Ohms	SD	0.018m/2
Qms	4.62	Cms	0.11mM/N
Qes	0.124	Mms	8g
Qts	0.97		



##### EDPRO65B-E6

Fs	166.199Hz	BL	4.41Tm
Vas	3.458L	SPL	93.4dB
Re	3.2 Ohms	SD	0.023m/2
Qms	8.695	Cms	112.067uM/N
Qes	1.406	Mms	8.183g
Qts	1.210		



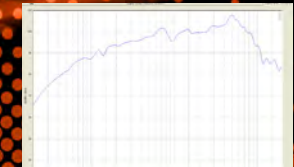
##### EDPRO65SX-E6

Fs	170.198Hz	BL	4.2Tm
Vas	3.546L	SPL	92.6dB
Re	3.2 Ohms	SD	0.023m/2
Qms	6.586	Cms	114.907uM/N
Qes	1.476	Mms	17.610g
Qts	1.206		



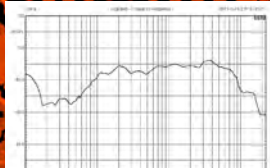
##### EDPRO65C-E6

Fs	127.7Hz	BL	5.7Tm
Vas	4.1L	SPL	92.3dB
Re	3.2 Ohms	SD	0.023m/2
Qms	3.46	Cms	0.16mM/N
Qes	0.76	Mms	9.7g
Qts	0.62		



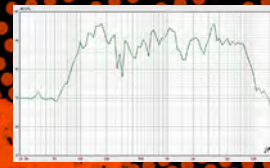
##### EDPRO8B-E7

Fs	140.63Hz	BL	5.44Tm
Vas	5.35L	SPL	91.6dB
Re	3.5 Ohms	SD	0.029m/2
Qms	15.59	Cms	0.08mM/N
Qes	1.64	Mms	15.66g
Qts	1.48		



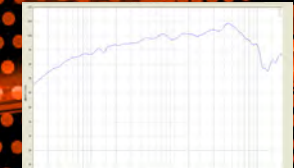
##### EDPRO8SX-E6

Fs	123.590Hz	BL	5.531Tm
Vas	8.289L	SPL	92.6dB
Re	3.2 Ohms	SD	0.029m/2
Qms	7.353	Cms	100.893uM/N
Qes	1.335	Mms	16.437g
Qts	1.130		



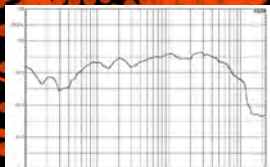
##### EDPRO65L-E6

Fs	121.9Hz	BL	6.1Tm
Vas	4.7L	SPL	93.4dB
Re	3.2 Ohms	SD	0.029m/2
Qms	3.35	Cms	0.19mM/N
Qes	0.59	Mms	8.9g
Qts	0.50		



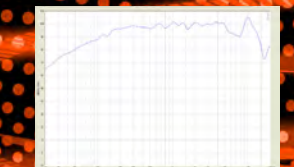
##### EDPRO10B-E7

Fs	84.96Hz	BL	7.03Tm
Vas	20.32L	SPL	92.7dB
Re	3.4 Ohms	SD	0.034m/2
Qms	15.00	Cms	0.12mM/N
Qes	1.06	Mms	28.9g
Qts	0.99		



##### EDPRO65X-E6

Fs	147.5Hz	BL	6.2Tm
Vas	2.6L	SPL	92.1dB
Re	3.2 Ohms	SD	0.023m/2
Qms	7.36	Cms	0.12mM/N
Qes	0.79	Mms	10.1g
Qts	0.71		



##### EDPRO8X-E8

Fs	101.3Hz	BL	8.8Tm
Vas	7.8L	SPL	93.7dB
Re	3.2 Ohms	SD	0.029m/2
Qms	8.62	Cms	0.12mM/N
Qes	0.53	Mms	20.4g
Qts	0.50		



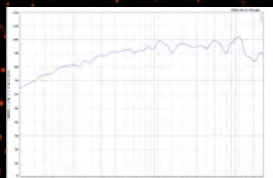
# XTREME

SERIES

## LEVEL 4

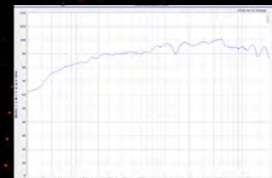
### EDPRO6E-E8

Fs	134.5Hz	BL	6.1Tm
Vas	3.5L	SPL	93dB
Re	3.1 Ohms	SD	0.023m/2
Qms	7.82	Cms	0.15mM/N
Qes	0.65	Mms	9.4g
Qts	0.6		



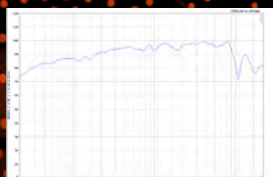
### EDXPRO6W-E9

Fs	137.9Hz	BL	4.21Tm
Vas	4.3L	SPL	91.6dB
Re	3.10 Ohms	SD	0.023m/2
Qms	5.68	Cms	170uM/N
Qes	1.18	Mms	7.7g
Qts	0.98		



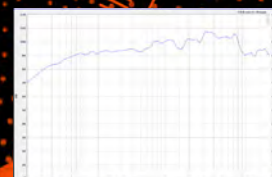
### EDPRO8E-E8

Fs	85.4Hz	BL	9.4Tm
Vas	13.3L	SPL	95dB
Re	3.5 Ohms	SD	0.029m/2
Qms	8.85	Cms	0.18mM/N
Qes	0.4	Mms	18.8g
Qts	0.39		



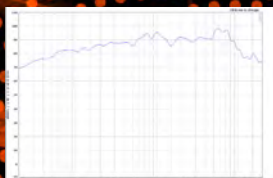
### EDXPRO8W-E9

Fs	117Hz	BL	4.91Tm
Vas	11.4L	SPL	93.9dB
Re	3.2 Ohms	SD	0.029m/2
Qms	7.04	Cms	160uM/N
Qes	1.14	Mms	11.6g
Qts	0.98		



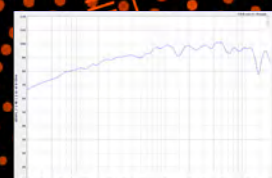
### EDPRO6BP-E8

Fs	97.5Hz	BL	7.3Tm
Vas	4.4L	SPL	89.8dB
Re	3.5 Ohms	SD	0.023m/2
Qms	6.7	Cms	0.17mM/N
Qes	0.65	Mms	15.9g
Qts	0.59		



### EDXPRO6L-E9

Fs	137Hz	BL	5.8Tm
Vas	3.9L	SPL	93.5dB
Re	3.1 Ohms	SD	0.023m/2
Qms	5.25	Cms	0.16mM/N
Qes	0.68	Mms	8.5g
Qts	0.60		



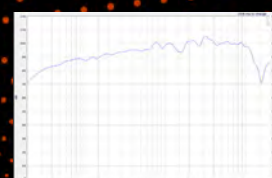
### EDPRO8BP-E8

Fs	103.7Hz	BL	8.3Tm
Vas	5.7L	SPL	90.8dB
Re	3.3 Ohms	SD	0.029m/2
Qms	9.79	Cms	0.09mM/N
Qes	0.82	Mms	26.3g
Qts	0.76		



### EDXPRO8L-E9

Fs	95.8Hz	BL	7.1Tm
Vas	14.5L	SPL	95.7dB
Re	3.2 Ohms	SD	0.029m/2
Qms	5.94	Cms	200uM/N
Qes	0.53	Mms	13.7g
Qts	0.49		



### EDXPRO6P-E9

Fs	139.2Hz	BL	3.9Tm
Vas	5.2L	SPL	93dB
Re	3.0 Ohms	SD	0.023m/2
Qms	5.43	Cms	210uM/N
Qes	1.08	Mms	6.2g
Qts	0.90		





[WWW.EDGECARAUDIO.COM](http://WWW.EDGECARAUDIO.COM)