

PlanToys' Sustainability

SUSTAINABLE
PLAY

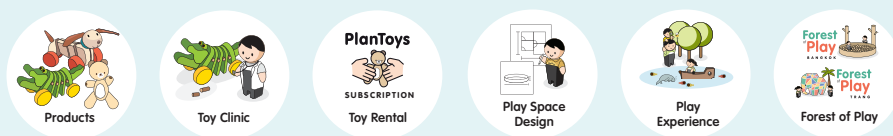
SUSTAINABLE
WAY

SUSTAINABLE
WORLD

For over 40 years, PlanToys has been dedicated to sustainability and discovering new ways in which we can make a difference. We believe this begins with children. The PlanToys design strategy follows three pillars, **Sustainable Play** in a **Sustainable Way** to create a **Sustainable World**.

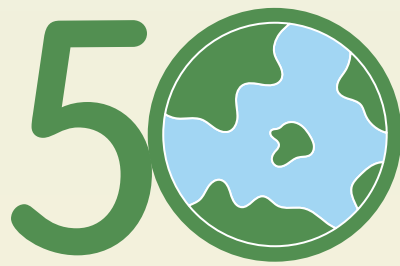
SUSTAINABLE **PLAY**

Products and Services



We're committed to creating toys and play experiences through our products, activities, and services that support child development through sustainable play by cultivating a positive attitude towards oneself, society, and the environment. Enhancing development through play is at the forefront of our minds and the heart of our designs. For over 40 years, we have instilled positive attitudes and environmental awareness that are fun and easy to learn for children worldwide. In addition to child development, we factor how our designs can be executed sustainably and reduce waste. When cared for properly, PlanToys are designed to be heirloom toys.

This year PlanToys has expanded play to adults and the elderly. We believe in the power of play and all the benefits it can provide. In addition to enhancing the development of children, engaging in play helps maintain cognitive functions, confidence, and an overall healthy outlook on life.



50 million children across 70 countries have benefited through Sustainable Play

PlanToys designers partner with child specialists to determine each toy's age appropriateness and developmental-aid potential. Following this, we move forward with eco-design and manufacturing principles that help minimize adverse environmental impacts. As a result, parents can be assured that everything we produce is high quality and beneficial for children.

(You can download the developmental checklist for children 0-6 years here.)

Play is both beneficial and fun!

Wonky Fruit & Vegetable Set

Children can learn about the nutritional value of food and the importance of reducing food waste.

Green Dollhouse

This dollhouse cultivates alternative ways to use clean energy in everyday life to be environmentally responsible!

Build a Robot and My Mood Memo

These play sets were designed for children, considering neurodivergent children to allow them to identify and express their emotions.

Braille Numbers and Alphabets, and Hand sign Numbers and Alphabets

These play sets help to engage visually impaired children and help all children understand different approaches to play.

It's essential that children of varied abilities can thrive and play together.

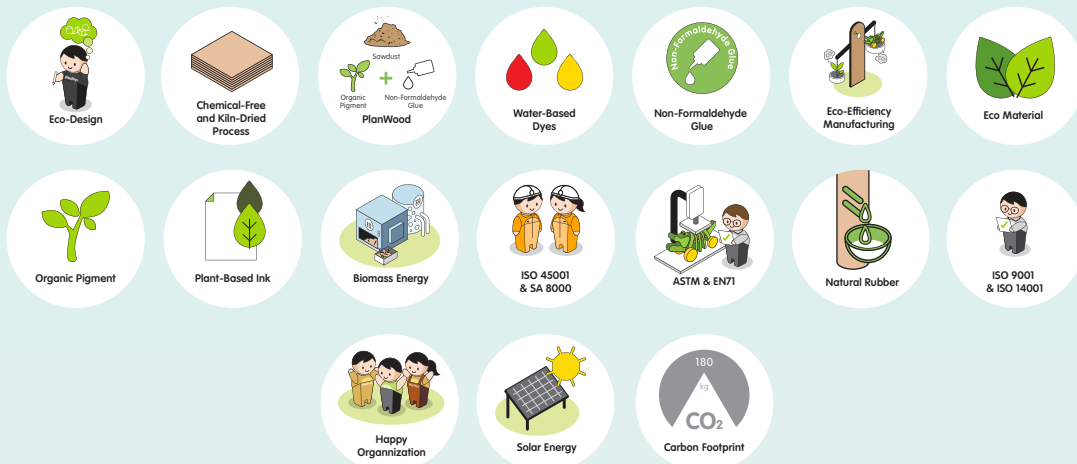


Circular Design

When we begin to design a toy, we're already considering the final stages of the product's life. All PlanToys toys are crafted with the environment in mind. We're constantly improving our production processes to upcycle leftover materials, minimize energy expenditure, and set an example of sustainable business practices. In addition to our manufacturing process, we have services for extending toys' life cycles, such as a toy clinic for repairing broken toys. We have established a Toy Library for toy rental service. We're proud of our new initiative, PlayCycle! With PlayCycle, we hope to establish a community that will share and passes down toys that have been outgrown to keep our toys in the loop and not ends up at a landfill.

SUSTAINABLE WAY

Business Operations

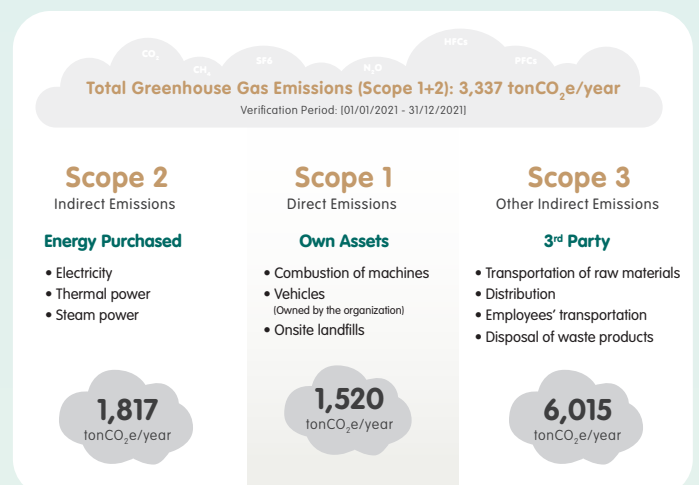


We pay close attention to every step of our manufacturing process to create our wooden toys, including the well-being of our employees and local communities, as well as responsible for the environment. Every factor behind our business operations drives sustainably. We are dedicated to people, the environment, and society. This begins with our employees. We instill a positive attitude towards life in our employees and their families. We encourage them to live sustainably and share the benefits of doing so on a global level.

We will lead the organization toward Carbon Neutral by 2025

(Scope 1 and 2)

PlanToys release approximately 3,337 tonCO₂e from the combustion of machines, corporate vehicles, transportation of raw materials and waste, and factory energy (Based on carbon emissions calculations in Scope 1: Direct Emissions and Scope 2: Energy Indirect Emissions.) Still, we have managed to reduce our environmental impact.



Our way to reduce carbon emissions

75% of materials came from 30 km radius around the factory

to save time and reduce carbon emissions from transportation.

Materials came from nearby the factory.

Our toys are made from 75% of resources from a 30 km radius around the factory. Investing in communities surrounding our factory helps to save time and reduce carbon emissions from transportation.

Thailand Voluntary Emission Reduction Program: T-VER

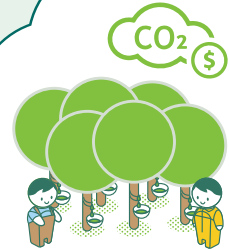
We are working on a 1,600,000 Sqm. T-VER project. T-VER is Thailand Voluntary Emission Reduction Program. It is the GHG emission reduction program developed by Thailand Greenhouse Gas Management Organization (TGO) to promote and support all farmers to participate in the GHG emission reduction program and can sell the reduction unit or carbon credit.

Annual Reforestation



Planted **34,000** trees since 2004

323 tCO2e



T-VER Project

Thailand Voluntary Emission Reduction Program

1,600,000 Sqm.

Carbon Reduction

4,000 tCO2e

= Plant 421,053 trees per year

Annual Reforestation

We have been part of Plan Group's annual reforestation since 2004. (In 2000-2001 no planting because of covid.) We plant 2,000 trees annually, equating to 34,000 trees. reduce carbon by 323 tCO2e/year. (One tree absorbs 9.5 kg of carbon/year)

Solar Energy will reduce 400 tCO2e per year

(30% reduction in electricity consumption.)

= Plant 42,105 trees per year

Solar Energy

We installed 1,851 solar panels to reduce carbon emissions from electricity used within our factory.

This will reduce about 400 tCO2e per year, equivalent to a 30% reduction in electricity consumption or planting 42,105 trees yearly.

We are determined to safeguard the environment while also focusing on safety standards



Renewable Material from sawdust

PlanWood is the result of grinding surplus sawdust and wood chips from production and using a thermal process to form them into shapes. Through these processes, we can reduce the manufacturing process by up to 50% and create various unique toy shapes. In addition, every PlanWood product passes a thermal process. PlanWood has a higher density than solid wood - making it a perfect play material for water.



Safety toys, workplace, and environment

*E-0 glue still has a formaldehyde count of 0.01 (If there is formaldehyde lower than 0.01, the machine will read at 0.01). In general, E-0 is safe for toys. The lab will give the score of E-0 glue by giving a star point (F**** / F*** / F** / F*) The more stars a product receives, the better it is. Our products have received three stars.

In addition to being concerned about the safety of children, we're also concerned with the safety of our employees. We believe in the importance of using raw materials free from harmful chemicals. In the production process, we use the following:

- Non-Formaldehyde Glue is used in PlanWood and toy assembly.
- E-0* Glue is used as a component of plywood.
- Color is achieved through water-based dyes.

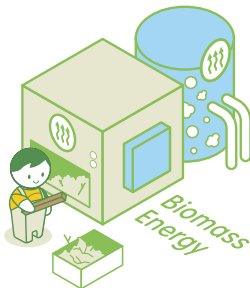
Dyes are added to rubberwood and organic pigments that are used to form PlanWood. Both types of paints we use are non-toxic and environmentally friendly.



Eco-friendly packaging

Initially, our boxes were produced with 4-color offset printing. We have since transitioned to a plain brown box made from recycled fiber with a printed label.

We currently produce boxes in 28 different sizes and have reduced our box variety by 50%. In 2020, up to 150,000 boxes of discontinued items were recycled as a partitioned into new cartons. This helps to keep things organized and reduces crashes during transport.



Waste Management

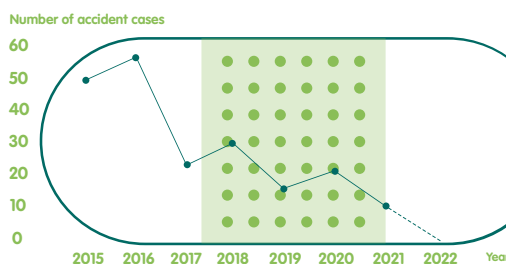
We optimize resources and achieve waste reduction goals every year.



We reduce waste by streamlining our operations to optimize resources. Most office-related tasks are performed on computers to reduce paper waste. We also maintain an efficient system to recycle cardboard, containers, packaging, water bottles, sawdust, and scrap metal.



Our employees' well-being is our responsibility



Comparison of the number of accidents in the past year (2015-2021)

Zero Accident

Our goal is to reduce accident cases during operation to zero!

Employees Savings Cooperative

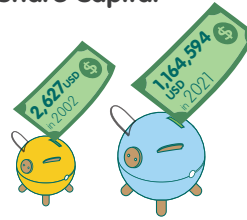
2002: We established a cooperative known as the PlanToys Employees Savings Cooperative Limited, with a share capital of 2,627 USD.

2008: It was converted into a service cooperative with a convenience shop.

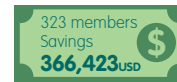
2010: We added the deposit service for members.

- Total share capital of 1,164,594 USD
- Total of 323 members
- Total loan amount over 17,208,412 USD. (Mostly housing loans and education)
- Total savings for members was 366,423 USD

Share Capital



Saving



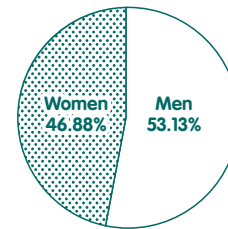
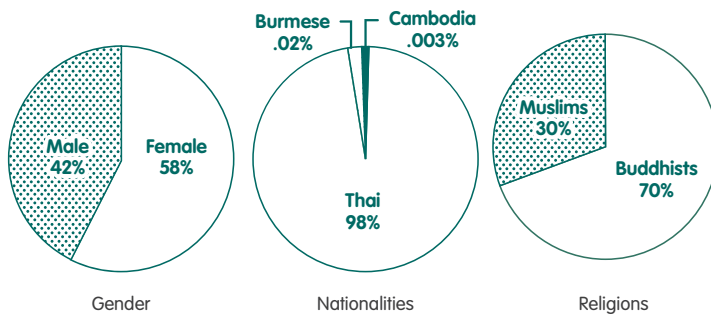
Loan

amount over

17,208,412 USD



We are a diverse company that is eager to contribute to the progression of employees' career paths with transparent procedures.



Leadership positions are evenly dispersed amongst men and women. 17 men 15 women.

Our team consists of 650 employees of diverse backgrounds.



PlanToys is an equal opportunity employer and currently employees 7 team members with physical disabilities.

We learn and share toward zero hunger

Creating a positive change for society must start with ourselves.

- Planting organic rice with local farmers in order to understand the value of food.
- Allocating space within the factory for employees to make vegetable gardens for consumption and sharing.



SUSTAINABLE WORLD

Social Contribution



We share our value of Better Kids, Better World through Sustainable Play with our community by supporting projects that benefit society and the environment.

Everyone can learn through play



10,000
children
have enjoyed playing
at the Forest of Play
in Bangkok and Trang
since its opening.

Forest of Play

We build the Forest of Play as an inspiring place where children can be active and learn about the world through play.

The Forest of Play began with an interactive exhibition at Chulalongkorn University in 2019. After the exhibition ended, it moved back to Sathorn Soi 10 and opened officially in early 2020.

In 2020, we built The Forest of Play. It covers an area of 64,000 square meters of nature in Trang Province, with outdoor and indoor areas to explore. The PlanToys Toy Museum can be found at this location as well. Over 10,000 children have enjoyed the Forest of Play at all 3 locations.

Mom-Made Toy

In 2011, PlanToys founded the Mom-Made Toys project to give back to society in celebration of our 30th anniversary. We have collaborated with parents of special needs, designing toys to help support the development of children with cerebral palsy, autism, and visual impairment.

10,185
special needs
children
played with this collection



PlanToys Toy Library

PlanToys Toy Library
at Sathorn 10

PlanToys



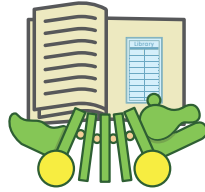
TOY LIBRARY

144
members in total.

349
sets were rented

=
We help parents save

26,972
USD



PlanToys Toy Library at Public Library

- TK Park, Bangkok
- Chalerm Rajkumari Public Library, Yan Ta Khao District, Trang Province.
- Public Library, Nuea Khlong District, Krabi Province.
- Public Library, Khao Wiset District, Trang Province.
- Public Library, Mueang Trang District.

1,100 play sets were borrowed
from all locations

It started during the pandemic; we want to make play accessible to children that cannot come to the playgroup and help reduce stress on parents.

PlanToys Toy Library at Sathorn 10

The project started in April 2021 as a subscription rental program. Each set of toys comes with a storybook to enhance learning. The rental price is affordable to help reduce the burden of expenses for parents.

PlanToys Toy Library X Public Library

PlanToys Toy Library at TK Park

The project started in June 2021. Since this time, a total of 1,082 play sets have been rented. TK Park members can rent toys for free.

[\(Click here for more information.\)](#)

PlanToys Toy Library in the South of Thailand

In 2021, create a play corner at the public library where children can rent toys free of charge. There are currently 4 locations:

1. Chalerm Rajkumari Public Library, Yan Ta Khao District, Trang Province.
2. Public Library, Nuea Khlong District, Krabi Province.
3. Public Library, Khao Wiset District, Trang Province.
4. Public Library, Mueang Trang District.

Our social contribution activities

Contribution to society cannot be achieved without the cooperation of all our customers and partners.



Wonky Fruit & Vegetable Sets

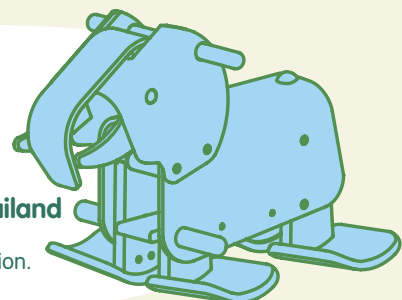
From 2018-2021, for every box of Wonky Fruit & Vegetable Sets sold, PlanToys distributed 1 euro to Kromkommer, an organization that aims to reduce food waste. We have donated a total of 16,857 USD.

Walking Elephant

In 2019-2021, we collected 8,238 USD from 10 USD in revenue from every Walking Elephant sold. Some of the proceeds were donated to Save Elephant Foundation Thailand and will be used to teach children about elephants.

\$9,490

were donated to
Save Elephant Foundation Thailand
and other activities to educate
children about elephant conservation.



For over 40 years, we were able to achieve 16 goals of the UNSDGs!

SUSTAINABLE PLAY



SUSTAINABLE WAY



SUSTAINABLE WORLD



3 of the 16 goals we have achieved are at the heart of our three sustainability missions:



GOAL 4 Quality Education

Whether it's employees' work knowledge or children playing, we aim to create opportunities for self-improvement in order to build a strong foundation for sustainable living.



GOAL 12 Responsible Consumption and Production

We care about all sustainable processes that allow us to distribute our products and services.



GOAL 13 Climate Action

We take responsibility in every process to minimize the potential negative impacts on the environment.

Since PlanToys was established, it has been our mission to improve our operations every step of the way in order to preserve the world's resources as much as possible, leading to a sustainable future for all of us.

“Companies that create real sustainable impact are ones that integrate sustainability as part of their core business strategy, throughout all their operations, and across teams. Importantly, “tone from the top” is necessary to successfully drive sustainability. At PlanToys, all the key elements of a sustainable business are there.”

Ms. Ramrada Ninnad
Sustainability Consultant