



# Façade 2.0

## Façade 2.0

Suitable wall  
type

Concrete walls

Steel aluminum structure wall

Stone wall

Timber wall

.....

**The wall materials that can be used for facade PV projects shall be checked by Sunman**

# Façade 2.0

Module type

166 half-cell

SMF430F-6X24UW (2120\*1046\*2)

SMF430F-6X24DW (2120\*1046\*2)



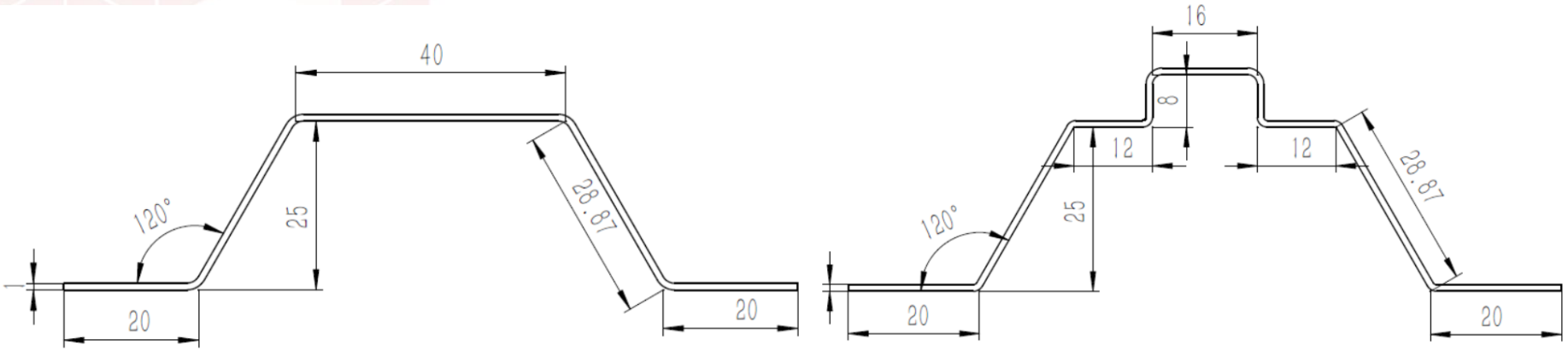
SMF430F-12X12UW (2054\*1080\*2)

SMF430F-12X12DW (2054\*1080\*2)



# Installation method

## Installation method

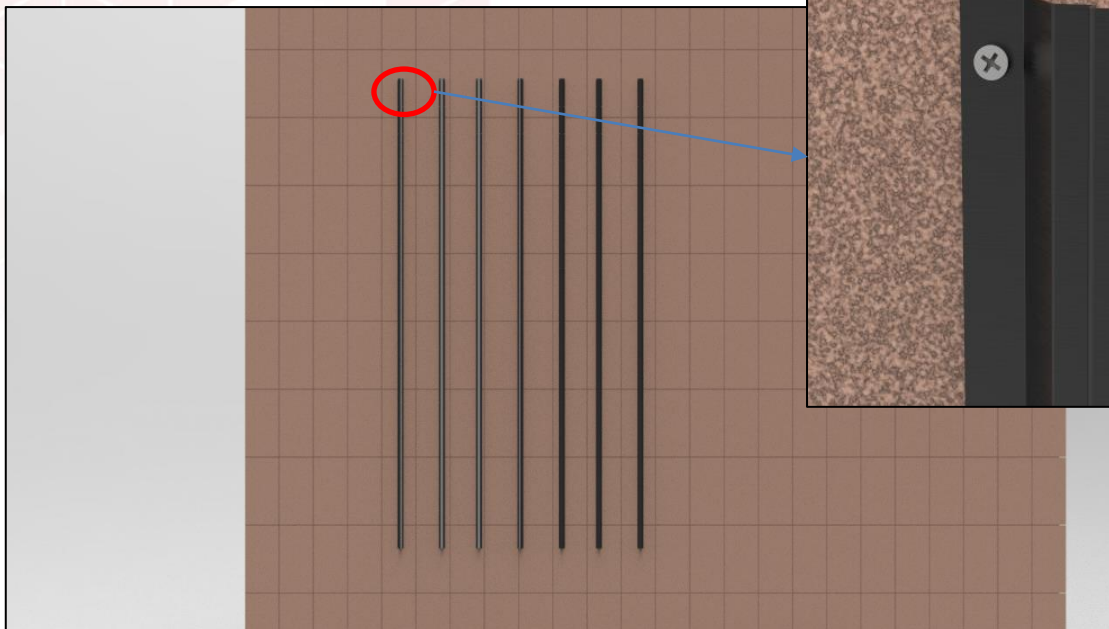


Middle rail

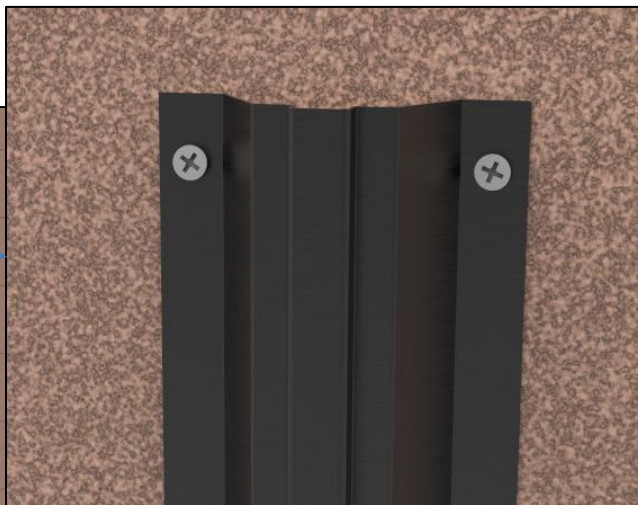
Side rail

# Installation method

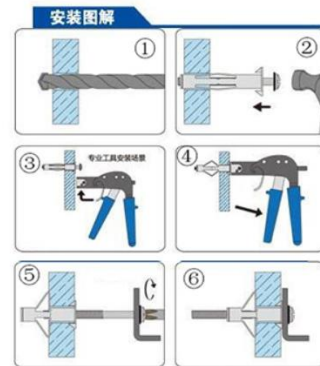
Vertical array



Rail fixing  
Guide rail spacing is shown in detail

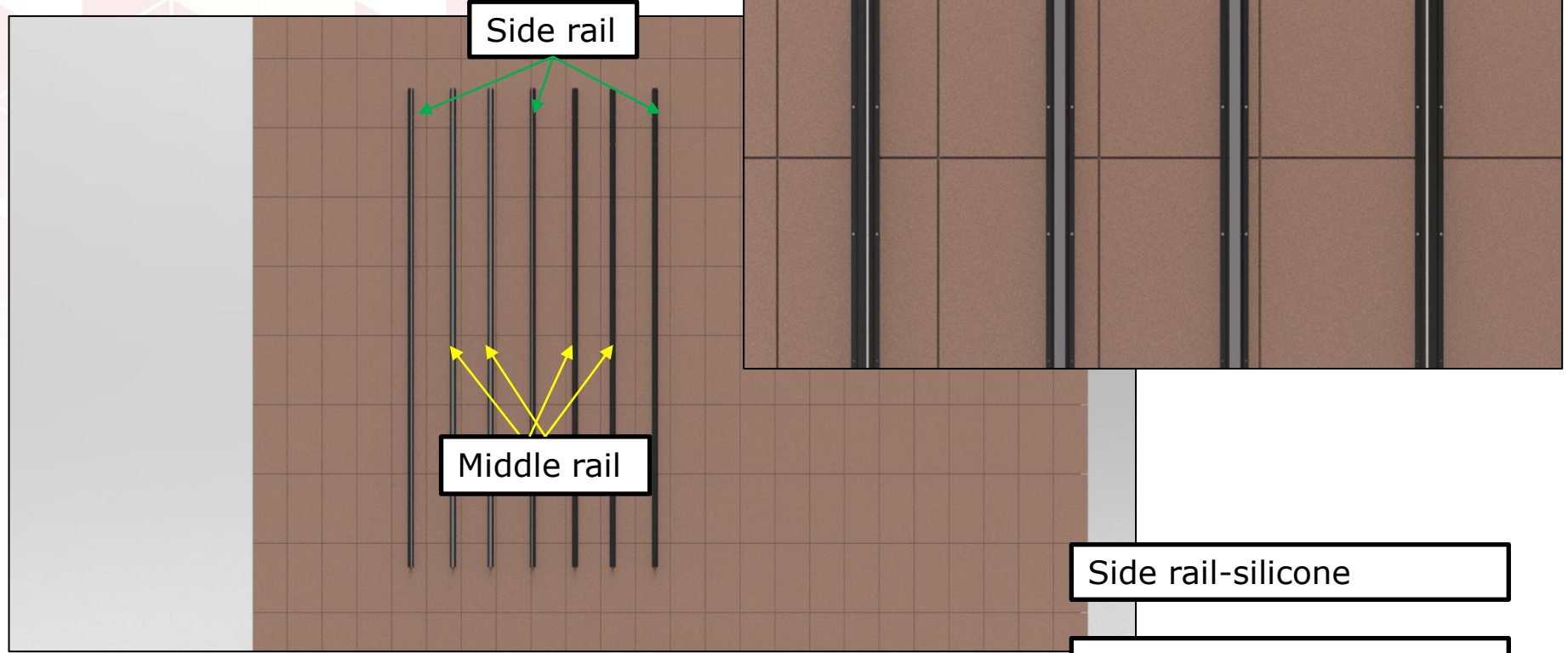


中空壁虎安装图解



Fasteners  
(hollow wall)

# Installation method

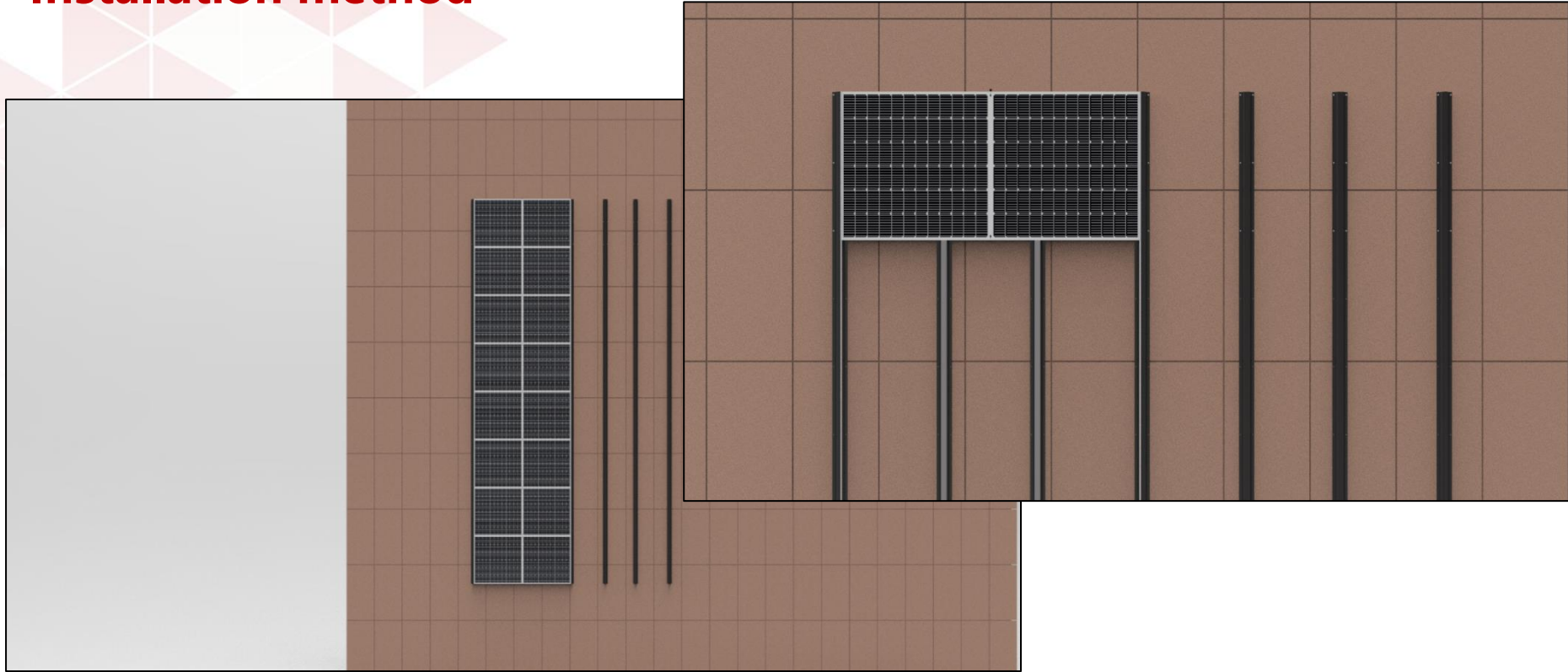


The rail surface should be applied with the corresponding adhesive

Side rail-silicone

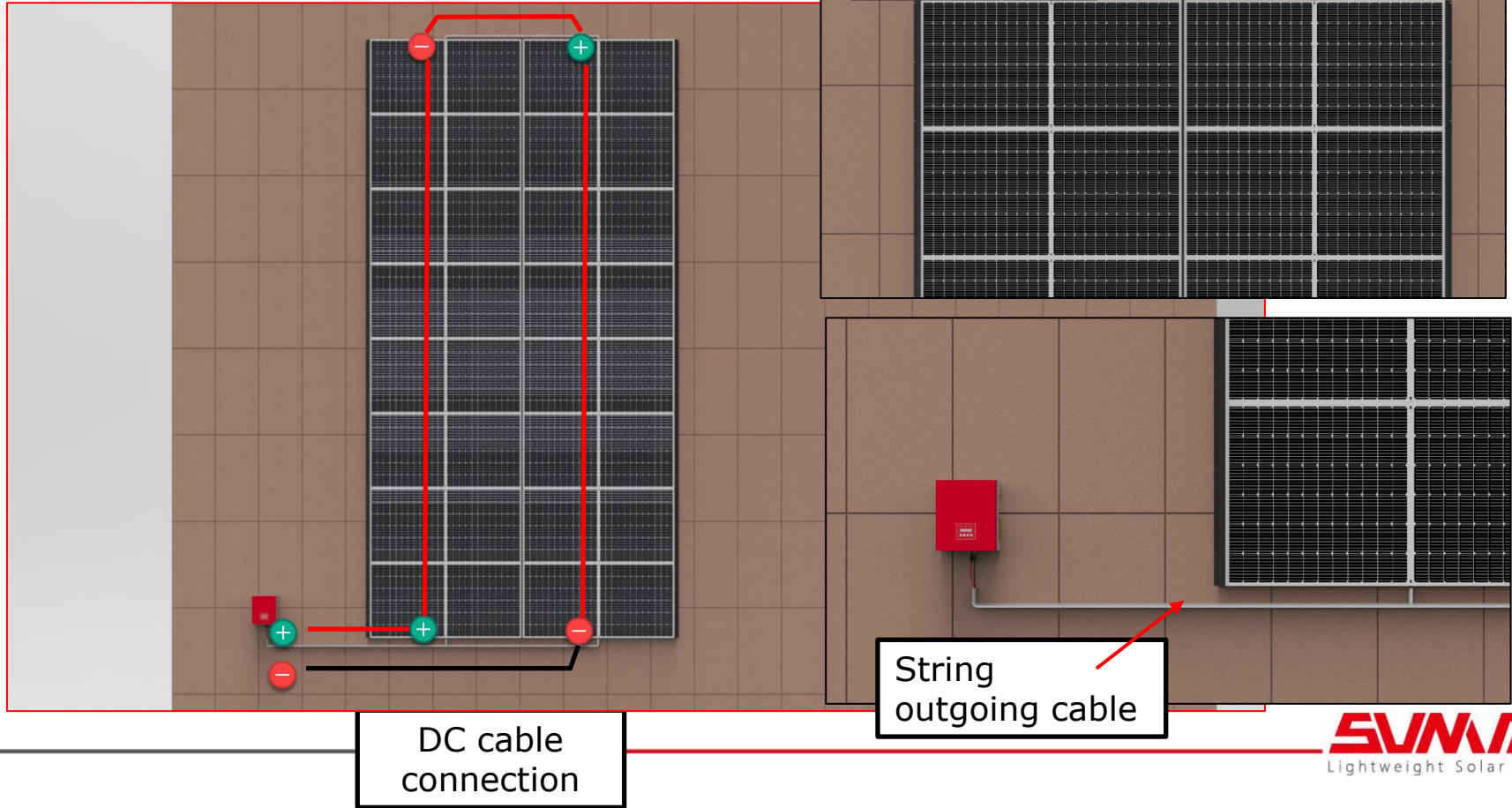
Middle rail-tape

# Installation method



Bonding module

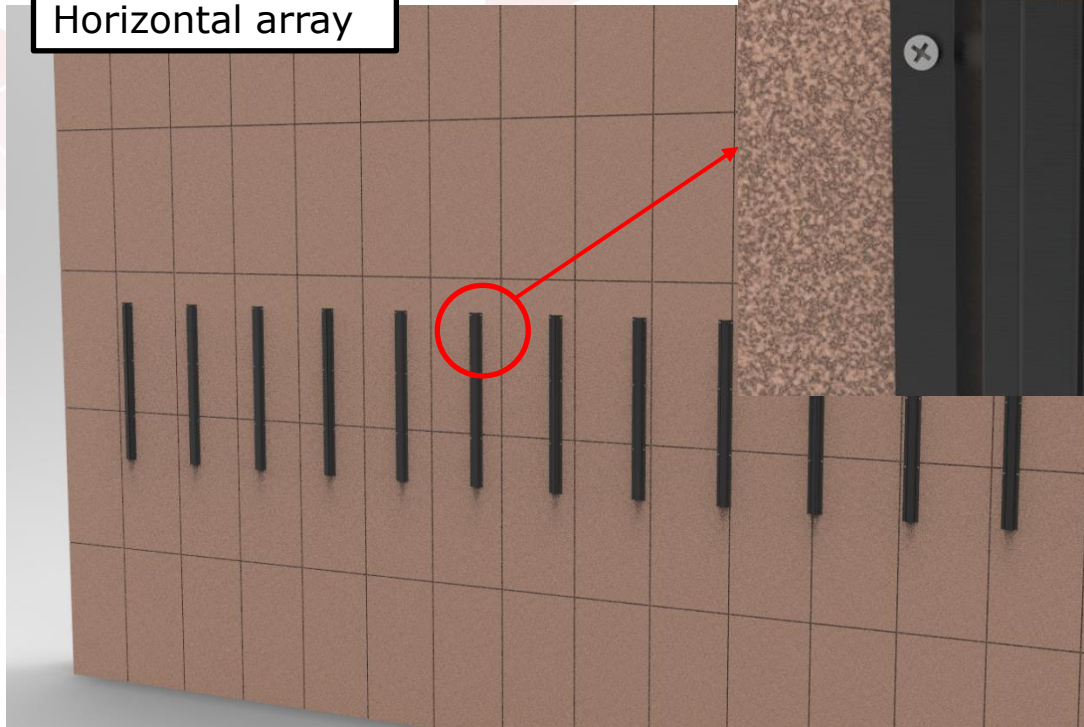
# Installation method





# Installation method

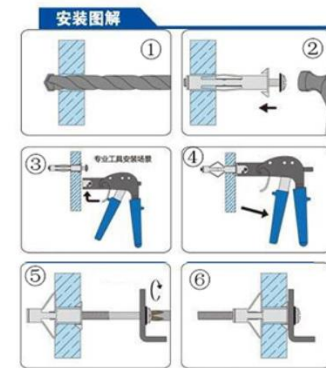
Horizontal array



Rail fixing

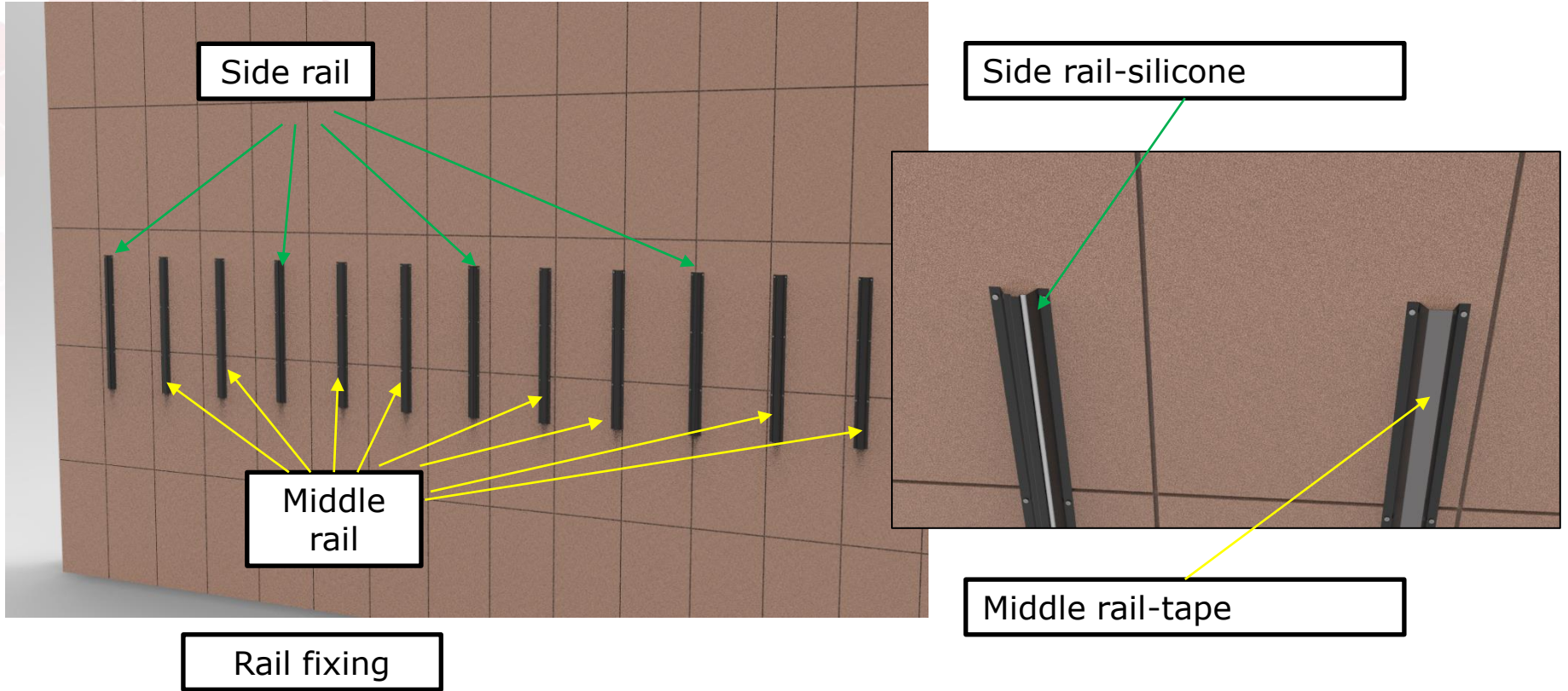


中空壁虎安装图解

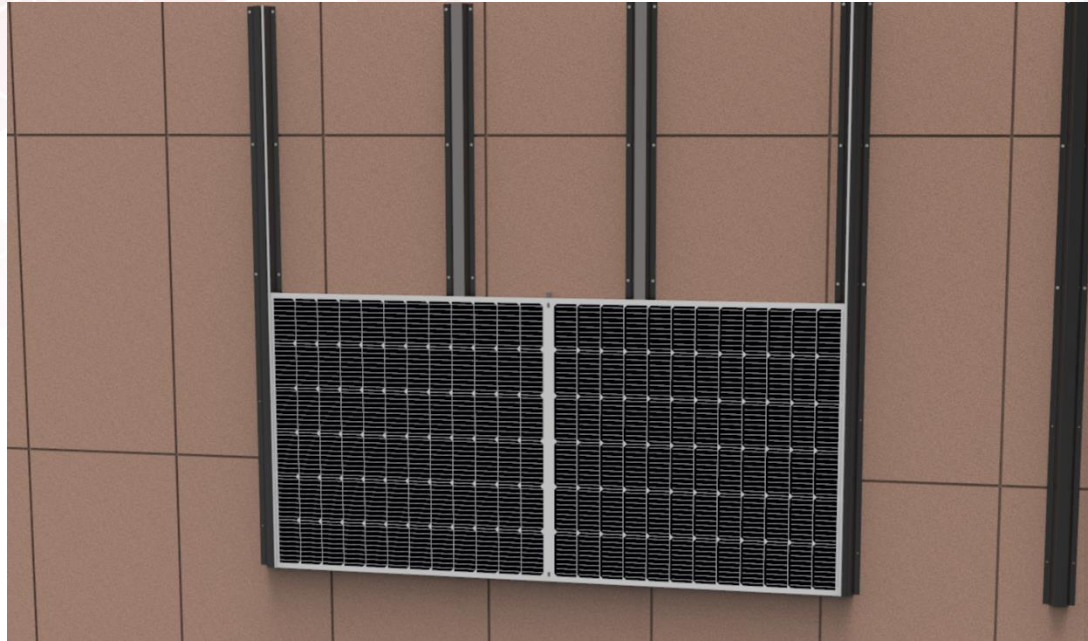


Fasteners  
(hollow wall)

# Installation method



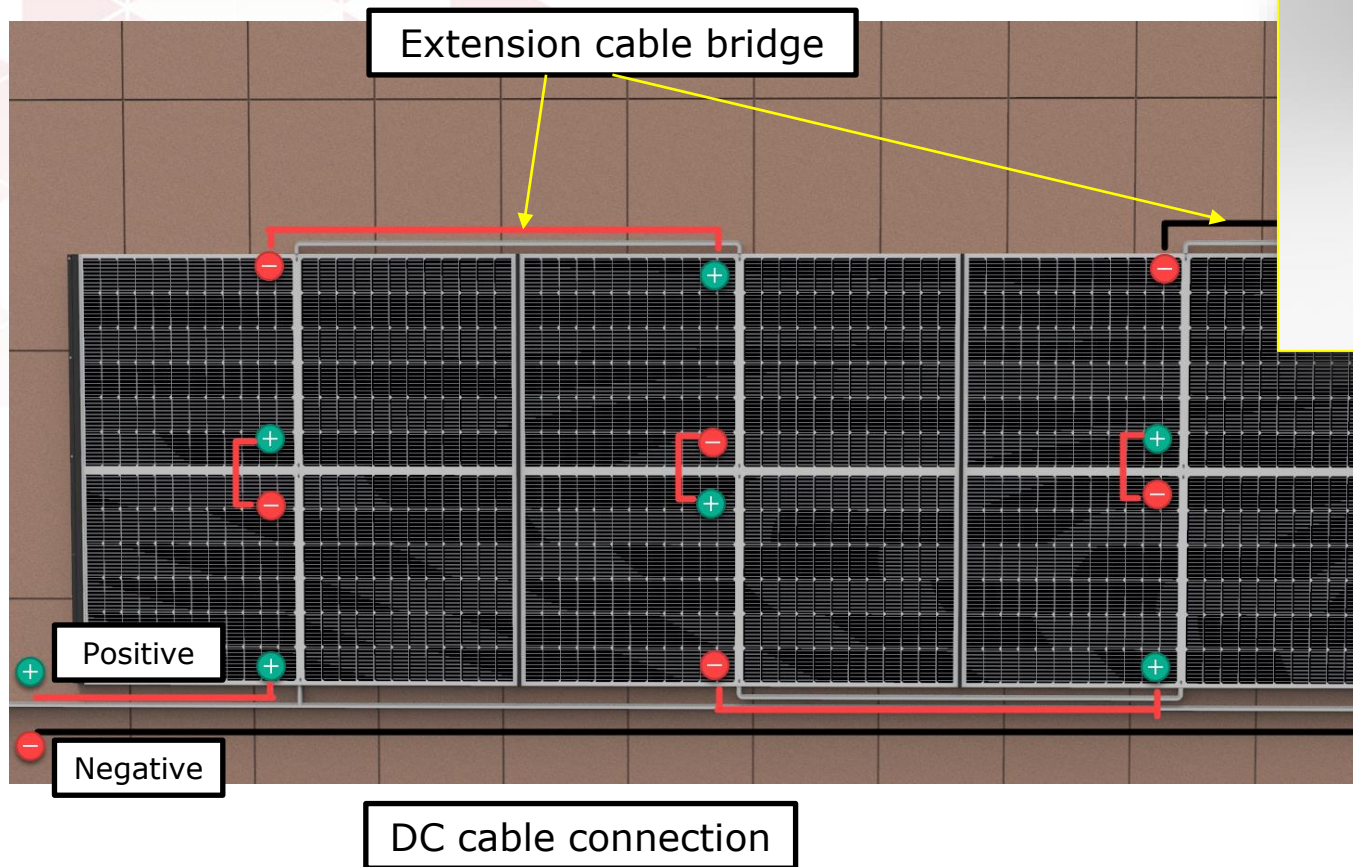
# Installation method



Bonding module



# Installation method



# THANKS!



LinkedIn



Website



Twitter



Facebook