 BRIZA

USER MANUAL

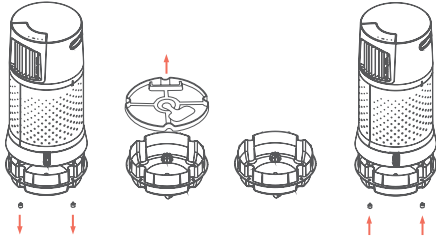
CONTENTS

- 3 Caution
- 3 Setup
- 4 Components
- 6 Operation
- 7 Cleaning & Maintenance
- 10 Troubleshooting
- 12 Technical Information

CAUTION



IMPORTANT: Read and save these instructions.
Unscrew the tank base and remove the plate-sized plastic piece prior to first use.



1. When moving the unit, use caution not to spill water from the tank.
2. Don't put anything on top of the unit.
3. Don't put anything directly in front of the unit.
4. Don't put anything through the front grill.

SETUP

1. This unit is controlled with a touchscreen panel.
2. Please use this unit with adequate air ventilation.
3. Do not exceed "max" water level marker when filling the tank. Do not run the cooling function if water level is too low.
4. Drain the water tank when cleaning the unit.
5. Fill tank with water only. Do not add any chemicals.
6. Make sure your power supply is 120 V / 60 Hz.

5. Unplug the unit before filling with water or cleaning.
6. Stop operating this unit immediately if it functions abnormally. Contact info@brizacomfort.com for further instruction.
7. To reduce the risk of fire or electric shock, do not use this fan with any solid-state speed control device.
8. Do not operate any fan with a damaged cord or plug. Discard fan or return to a facility for examination or repair.
9. Do not run cord under carpeting. Do not cover cord with throw rugs, runners or similar coverings. Do not route cord under furniture or appliances. Arrange cord away from traffic area and where it will not be tripped over.

The unit will not operate normally if power supply is too low. Damage may occur if the power is too high.

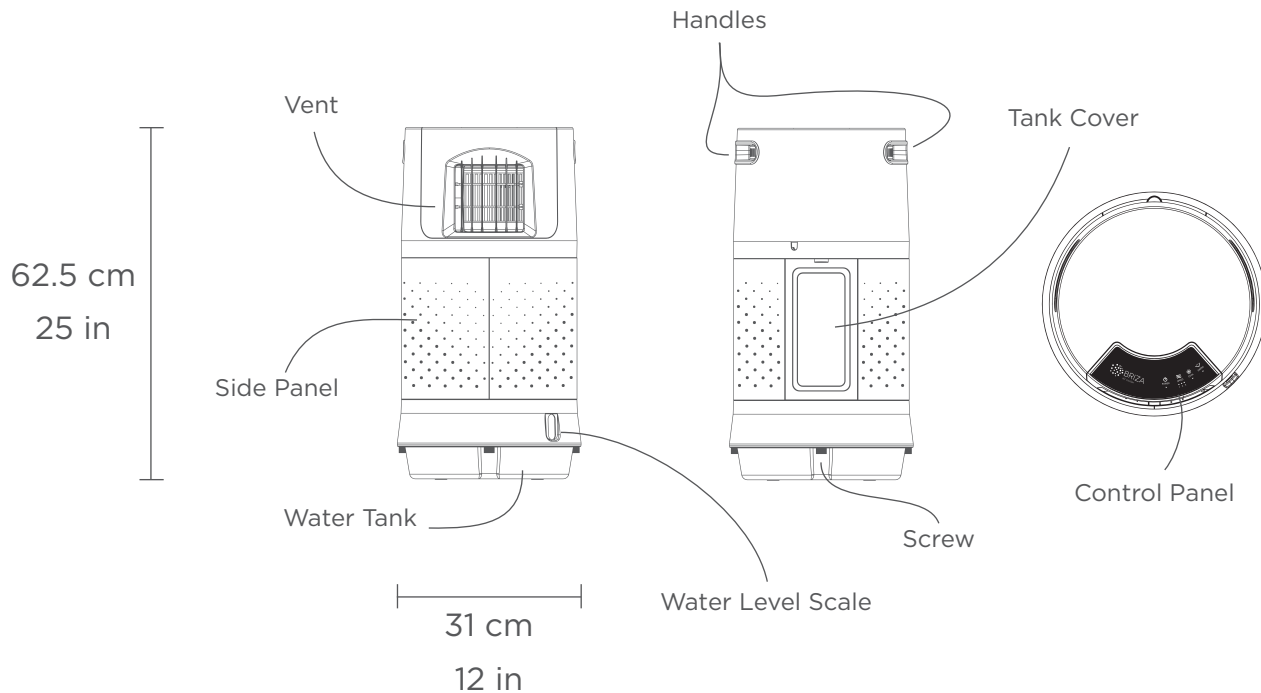
7. Unplug the unit from power supply when not in use.
8. Please note that when the tank is empty the unit will switch from "Cool" to "Fan" mode. Leave the unit in "Fan" mode for 30-40 minutes after use to dry the filters.

4 COMPONENTS

FRONT

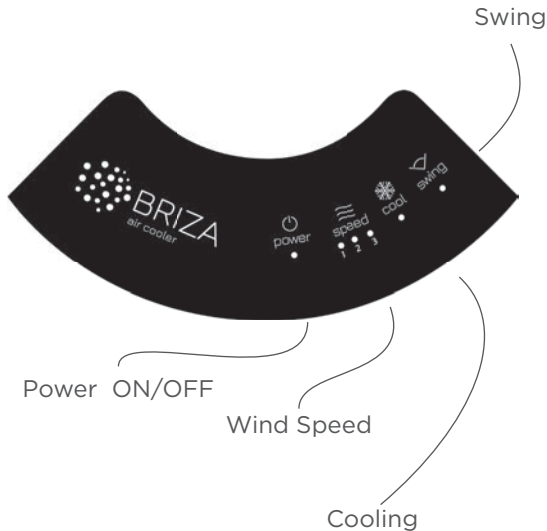
SIDE

TOP



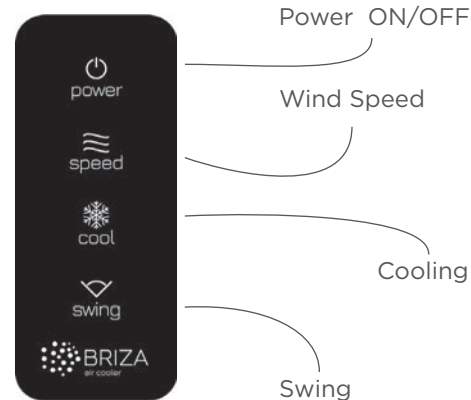
COMPONENTS

CONTROL PANEL



REMOTE CONTROL

WARNING: Chemical burn hazard. Keep batteries away from children. This product contains a lithium button/coin cell battery. If a new or used lithium button/coin battery is swallowed or enter the body, it can cause severe internal burns and can lead to death in as little as 2 hours. Always completely secure the battery compartment. If the battery compartment does not close securely, stop using the product, remove the batteries, and keep it away from children. If you think batteries might have been swallowed or placed inside any part of the body, seek immediate medical attention.



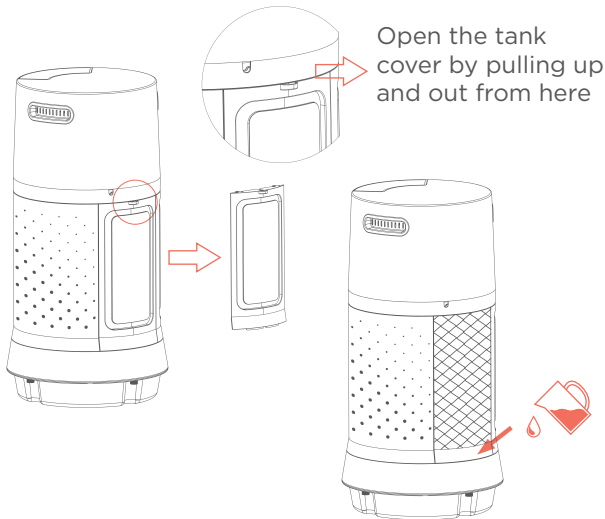
OPERATION

NOTE

When the "Cool" mode is activated, the water will be pumped up to saturate the filters. Water flowing through the filters mixes with the incoming air in turn, lowering the temperature. The effectiveness depends on humidity and ambient temperature when the unit is in "Cool" mode. Purified/distilled water is recommended, regular cleaning is required.

Filling Water Tank

Open the tank cover on the back of the unit as shown in the illustration below. Fill the tank with 8 L of water. Use the visual indicator on the front or for reference insert your finger into the tank: if you touch water then it is full.



Power

Press "Power" on the control panel or remote to turn the fan on. "Power" will illuminate, press again to power off.

Speed

Press "Speed" on the control panel or remote to control wind speed. Speeds: Low (1), medium (2), High (3), selected speed will light up.

Swing

Press "Swing" on the control panel or remote to have the front grill oscillate. "Swing" will illuminate. Press again to stop "Swing" mode.

Cool

Press "Cool" on the control panel or remote to operate cooling function. Light will illuminate. Press again to switch off.

CLEANING & MAINTENANCE

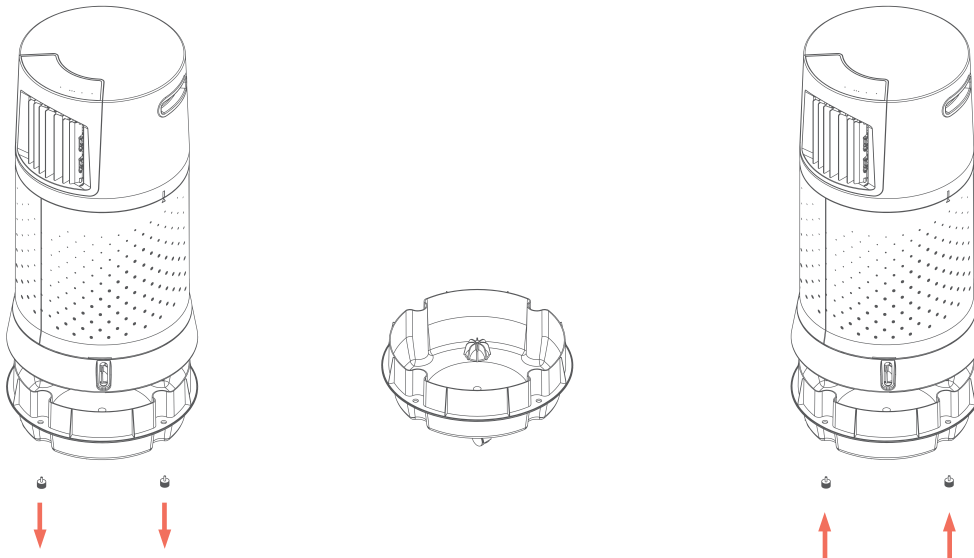
! **IMPORTANT:** Always unplug the fan before cleaning, disassembling or servicing.

Cleaning the Unit Body

Use a 10:1 water and vinegar mixture and a soft towel.

Cleaning the Water Tank

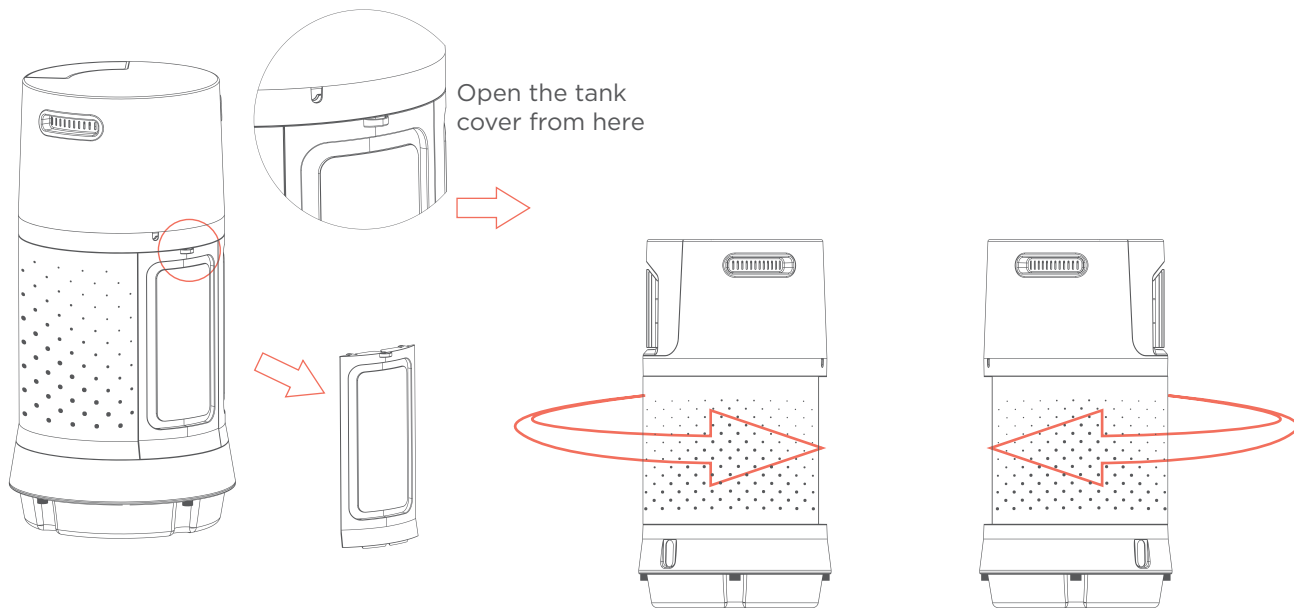
Remove the 4 screws from the bottom of the water tank and clean the tank base with a soft, non abrasive towel with the water and vinegar mix.



CLEANING & MAINTENANCE

Cleaning the Filters

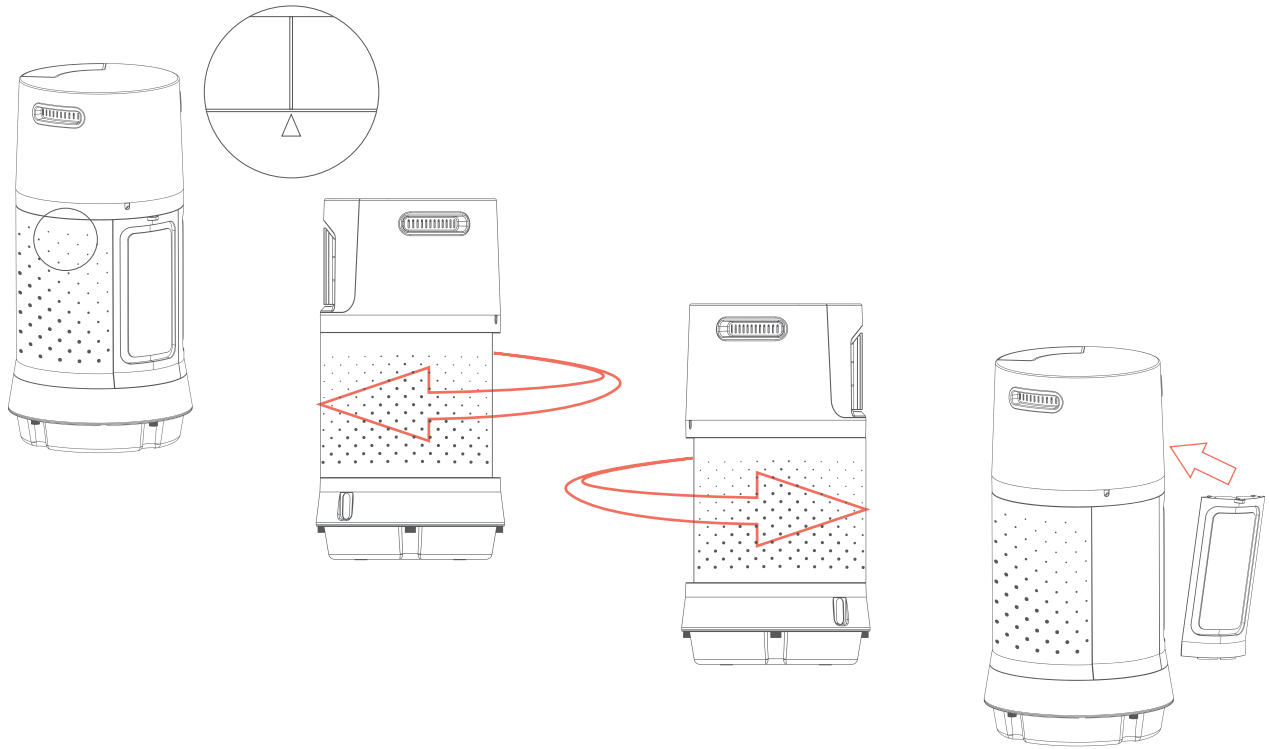
Open the rear tank cover and slide the side panels as shown in the illustration below.



Remove filters, soak in vinegar-water (1:4 ratio) for 10-15 minutes. Let dry and wipe with soft cloth.

CLEANING & MAINTENANCE

When putting the unit back together make sure to line up the markings on the side panels before you rotate them back into place. To put the rear panel back on, first placing the bottom of the panel in before locking the top into place.



TROUBLESHOOTING

PROBLEM	POSSIBLE CAUSE	CORRECTION
The remote control is not working.	<ol style="list-style-type: none"> 1. Remote control batteries have run out. 	<ol style="list-style-type: none"> 1. Replace batteries.
The unit is making a clicking noise.	<ol style="list-style-type: none"> 1. Loose pump parts or vents. 	<ol style="list-style-type: none"> 1. Make sure all pump parts and vent horizontal slats are securely in place.
The unit is making a gurgling noise.	<ol style="list-style-type: none"> 1. The unit is out of water. 	<ol style="list-style-type: none"> 1. Refill the water tank (see page 6).
The pump is not functioning properly / no cool air is circulating.	<ol style="list-style-type: none"> 1. The filters are clogged or dirty. 2. The pump has become dislodged or clogged. 3. Excessively high relative humidity. 	<ol style="list-style-type: none"> 1. Clean or replace the filters. 2. Make sure the pump is fully intact and fully submerged in water. 3. When the unit is used for long periods of time, the relative room humidity will increase, to counteract the humidity and allow more ventilation in the room, we suggest opening a window.

TROUBLESHOOTING

PROBLEM	POSSIBLE CAUSE	CORRECTION
Water spewing from the unit.	<ol style="list-style-type: none"> 1. Filters are deteriorating. 2. Clogged water ducts. 	<ol style="list-style-type: none"> 1. Change filters. 2. Clean the top water ducts located above the filters in the unit.
Undesirable odor.	<ol style="list-style-type: none"> 1. The unit is placed in an area where undesirable odors are presents, or algae are present in the water tank. 2. The filters are dirty. 	<ol style="list-style-type: none"> 1. Clean the water tank and the filters (see page 7). 2. The filters need to be replaced or cleaned (see page 8).
White sediments in the water tank.	<ol style="list-style-type: none"> 1. Water has a high content of minerals. 	<ol style="list-style-type: none"> 1. Drain the tank and clean the unit more frequently.



For further questions regarding the set up of your Briza or for troubleshooting tips please visit our website www.brizacomfort.com. You will find an informative video along with help for frequently asked questions in the FAQ section.

TECHNICAL INFORMATION

Air Volume	700 m ³ /h (400 ft ³ /m)
Area Coverage	12 m ² (130 ft ²)
Power	80 W
Input Electricity	120 V / 60 Hz
Current	0.66 A
Water Tank Capacity	8 L (2 gal)
Water Continuous Usage	6 - 8 h
Water evaporation Rate	0.5 - 0.75 L/h (0.1 - 0.2 gal/h)
Noise	< 55 dB
Fan Speed	3 speeds
Vent Size	12x12 cm (5x5 in)
Cooling Pad Type	4090
Overall Dimension	31x31x62.5 cm (12x12x25 in)
Net Weight	5.2 kg (11.5 lb)
Operating Weight	13.2 kg (29.1 lb)

Touch Panel & Remote Control Included



Batten Industries Inc.
114-2455 Dollarton Hwy.
North Vancouver, BC, V7H 0A2
Toll Free 1.888.984.7471
info@brizacomfort.com

brizacomfort.com