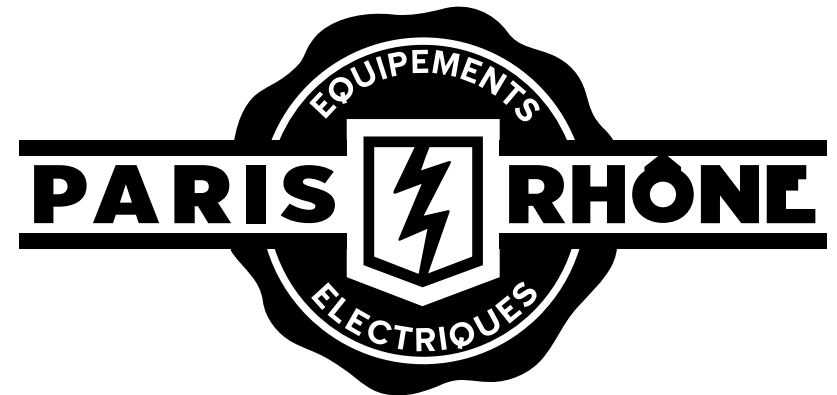
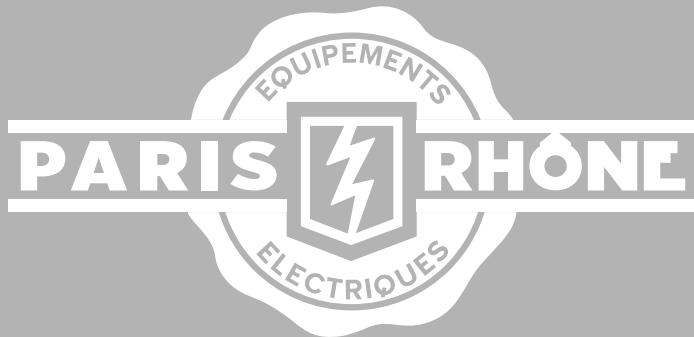


尺寸:150*200mm

折页

材质:128克铜版纸



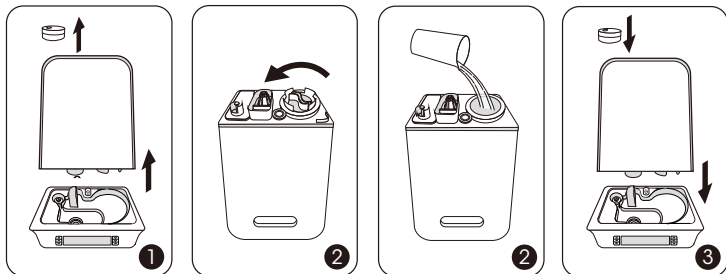
Ultrasonic Cool Mist Humidifier

PE-AH008
User Guide

Search the product model "PE-AH008"
in the link to download User Manual.

www.parisrhone.co/pages/user-manual

Using Your Humidifier



Add water

1. Remove the nozzle and turn the water tank upside down.
2. Remove the tank cap and fill the tank with purified water only.
3. Attach the tank cap and put the tank back onto the base securely. Put the nozzle back on.

Note: Do not add water into the base or through the nozzle.
Do not add essential oil or medicinal tablets into the water tank.

Operations & Functions

1. Connect to a power source, press the Power button to turn on the humidifier. (Default: medium mist)
2. Press the Power button to turn off the humidifier. (fan will run for another 3 mins)

Mist Adjustment

- Press the Mist button to cycle through Medium-High-Low mist levels.

Humidity Settings

- Press the Humidistat button to set the humidity level (30%-95%, 5% increments).
- When the preset humidity level is reached, the unit stops misting with white ✓ turning green.
- To cancel humidity settings, hold the button for 1.5 seconds.

Note: The most comfortable environmental humidity is 40%-60%. Please adjust the mist as needed.

Timer for Shutoff

- Press the Timer button to set the timer for shutoff (0-12H, 1H increments).
- To cancel, hold the button for 1.5 seconds or set the timer to 00.

Sleep Mode


- Press the Sleep button to enter/exit the Sleep mode.
- Press any button except Light Button to wake up the unit.

Tank Light Control

- Press the Light button to turn on/off the night light.
- Hold the Light button for 1.5 seconds to turn on/off the tank light.
- The night light can be turned on/off separately.



Low Water Protection

When low water in the water reservoir, the humidifier stops misting and  lights up. It is designed to prevent the humidifier from possibly overheating and damaging the atomizer.

Memory Function

If power is not disconnected, the humidifier will always remember your last settings (mist level, humidity & brightness) once it is turned on again.

Specifications

Model	PE-AH008	Water Tank Capacity	6.0L/1.59Gal
Operating Voltage	100-120V~ 50/60Hz	Mist Output	Min: 100ml/h
Rated Power	25W		Medium: 200ml/h
			Max: 300ml/h

FCC Compliance

This device complies with Part 18 of the FCC Rules. Operation is subject to the following two conditions:

- (1) This device may not cause harmful interference, and
- (2) This device must accept any interference received, including interference that may cause undesired operation.



WEEE Compliance

Correct Disposal of This Product (Waste Electrical & Electronic Equipment)
(Applicable in countries with separate collection systems)

This marking on the product, accessories or literature indicates that the product and its electronic accessories should not be disposed of with other household waste at the end of their working life. To prevent possible harm to the environment or human health from uncontrolled waste disposal, please separate these items from other types of waste and recycle them responsibly to promote the sustainable reuse of material resources. Household users should contact either the retailer where they purchased this product, or their local government office, for details of where and how they can take these items for environmentally safe recycling. Business users should contact their supplier and check the terms and conditions of the purchase contract. This product and its electronic accessories should not be mixed with other commercial wastes for disposal.



support@parishhone.co



www.parishhone.co

Rev_1.0



Manufacturer: Shenzhen NearbyExpress Technology Development Co., Ltd.
Address: Floor 7, Building E, Galaxy World Phase II, Shenzhen, China

