

ULTRASONIC COOL MIST HUMIDIFIER

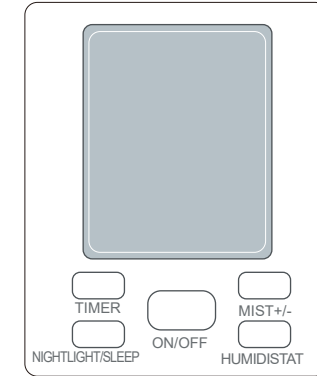
PE-AH001 User Manual

SPECIFICATIONS

Model	PE-AH001
Operating Voltage	US/CA: AC 100-120V 50 / 60Hz
Rated Power	20W
Water Tank Capacity	4.0L / 1.06Gal
Mist Output	Min: 100±15ml/h Medium: 200±23ml/h Max: 300±30ml/h
Working Time on a Full Tank	12-30h
Recommended Room Size	10-30 m ² / 107-322 ft ²
Noise	≤38dB
Dimensions	205 x 135 x 300mm / 8.1 x 5.3 x 11.8in
Net Weight	1600g / 56.4oz

Using Your Humidifier

Operations & Functions



ON/OFF

Turn on / Standby mode. (Default: medium misting)

MIST+/-

Cycle misting through low/medium/high levels.

TIMER

Set the timer for auto-off (1-24 h).

NIGHTLIGHT /SLEEP

Cycle through Nightlight On - Enter Sleep Mode - Exit Sleep Mode. Sleep mode: low misting

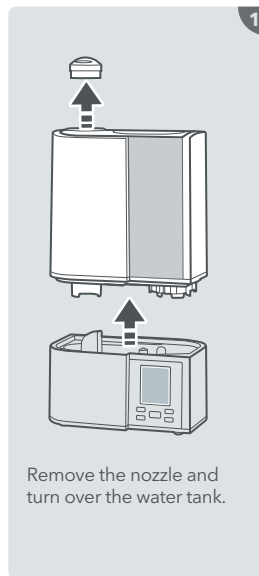
HUMIDISTAT

Set the humidity level (30%-95%, 5% by each tap).
Note: When humidity reaches 95%, press again to exit the humidity settings.



Questions or Concerns?
support@parishhone.co

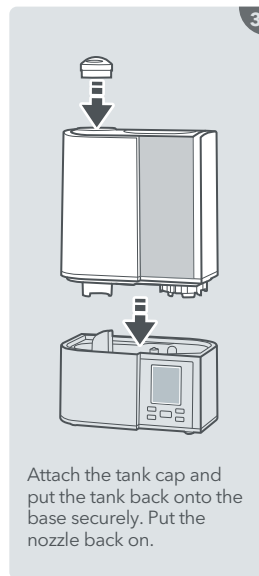
Add Water




Remove the nozzle and turn over the water tank.



Remove the tank cap and fill the tank with purified water only.



Attach the tank cap and put the tank back onto the base securely. Put the nozzle back on.

 Do not add essential oil into the water tank.

FCC Compliance

This device complies with Part 18 of the FCC Rules. Operation is subject to the following two conditions: (1) This device may not cause harmful interference, and (2) This device must accept any interference received, including interference that may cause undesired operation.

WARRANTY

Thanks for choosing Paris Rhône Ultrasonic Cool Mist Humidifier.

This product is covered with Paris Rhône product and labor warranty for 12 months from the date of its original purchase.

The warranty will not apply in cases of:

- Misuse, dismantling, or repairs performed by unauthorized personnel.
- Any appliance that has been tampered with or used for commercial purpose.
- Use of force, natural hazards, damage caused by external influences.
- Damage caused by non-observance of the User Manual, e.g. connection to an unsuitable mains supply or non-compliance with the instructions.
- Partially or completely dismantled appliances.
- Defects caused by or resulting from damages from shipping or alteration to the product or any of its parts that have been performed by unauthorized personnel.

We can only provide after-sales service for products that are sold by Paris Rhône or Paris Rhône authorized retailers and distributors. If you have purchased your appliance from a different place, please contact your seller for return and warranty issues.

※ **Please have your invoice and order ID ready before contacting Customer Support.**

Rev_1.2_EN

 support@parishhone.co

 www.parishhone.co

 Manufacturer: Shenzhen NearbyExpress Technology Development Co.,Ltd.
Address: Floor 7, Building E, Galaxy World Phase II, Shenzhen, China

 Made In China

尺寸:120*160mm

材质:128克铜版纸

折页